



Te Kārearea Agenda

Date: Wednesday, 18 July, 2018
Time: 9:00 am
Location: Ngunguru Marae
Waiotoi Road
Ngunguru
Attendees: Her Worship the Mayor Sheryl Mai
(Co-Chairperson)
Taipari Munro (Co-Chairperson)
Cr Crichton Christie
Cr Vince Cocurullo
Cr Tricia Cutforth
Cr Sue Glen
Cr Greg Innes
Cr Sharon Morgan
Cr Anna Murphy
Allan Halliday
Deborah Harding
Merepeka Henley
Violet Sade
Takiri Puriri
Delaraine Armstrong
Janelle Beazley
Sharon Kaipo

For any queries regarding this meeting please contact
the Whangarei District Council on (09) 430-4200.

1. Open Meeting	
2. Karakia/Mihi	
3. Apologies	
4. Introductions (Whakawhanaungatanga)	
5. Community Forum (Hui a Hapori)	
6. Previous Minutes	
6.1 Minutes Te Karearea 16 May 2018	3
7. Reports:	
7.1 Hapu Mandating Update July 2018	9
7.2 Treaty of Waitangi Settlements Progress from Hapu - July 2018	11
7.3 Action Log - July 2018	35
7.4 Plan Changes Consultation Presentation - Urban Areas, Transport and Three Waters and Open Spaces	51
8. General Business	
9. Closure of Meeting - Karakia	

Te Kārearea



Te Pae Tawhiti/Vision:

“He Whenua Rangatira”

“Whangārei, a district of prosperity, wellbeing and empowered communities”

Te Kaupapa/Mission:

“Ka tūtuki te Kāwanatanga ā-rohe, ka puāwai hoki te kotahitanga me ōna tini kaupapa”

“Local Government that works through effective partnership and provides practical solutions”

Ngā Tikanga/Principles:

- He kitenga mutunga kore, mahi tahi, mahi pono – Strategic partnership working collaboratively and in good faith
 - Kia Māia – Providing leadership through courage
 - Te Manawatōpu – Of one heart and mind. We are stronger working together
 - Anga mua – Progressive and proactive
 - Me kōrero tika, tau noa ngā take – Open and frank mutually agreed outcomes
-



Te Kārearea Meeting Minutes

Date: Wednesday, 16 May, 2018
Time: 9:00 a.m.
Location: Council Chamber
 Forum North, Rust Avenue
 Whangarei

In Attendance	Her Worship the Mayor Sheryl Mai (Co-Chairperson) Taipari Munro (Acting Co-Chairperson) Cr Tricia Cutforth Cr Sue Glen Cr Greg Innes Cr Sharon Morgan Cr Anna Murphy Deborah Harding Violet Sade
Not in Attendance	Takiri Puriri Cr Crichton Christie Cr Vince Cocurullo Allan Halliday Merepeka Henley Delaraine Armstrong
Scribe	Jennie Thomas

Also in attendance: Janelle Beazley, Huhana Lyndon, Richard Nathan, Peter Vaughan, Mira Norris, Waimarie Bruce-Kingi, Rob Forlong (Chief Executive), Jill McPherson (General Manager Strategy & Democracy), Aperahama Edwards (Manager, Māori Relationships), Merryn Statham (Consultation Adviser), Cr Phil Halse (arrival 10.20am)

1. Open Meeting

2. Karakia/Mihi

Opening Karakia – Taipari Munro
 Mihi – Takiri Puriri

3. Apologies

Crs Vince Cocurullo and Crichton Christie, Delaraine Armstrong and Andre Hemara

Moved by Cr Sharon Morgan

Seconded by Janelle Beazley

That the apologies be sustained.

Carried

4. Introductions (Whakawhanaungatanga) – Introductions were given by attendees of the meeting.

5. Previous Minutes

5.1 Minutes Te Kārearea Meeting 18 April 2018

That the minutes of the Te Kārearea meeting held on 18 April 2018, having been circulated, be taken as read and now confirmed and adopted as a true and correct record of proceedings of that meeting.

Cr Innes noted the Te Tai Tokerau Papakāinga Toolkit has been published and will be circulated.

6. Reports:

6.1 Hapu Mandating Update May 2018

Huhana Lyndon advised that a special Te Huinga meeting will be held 10am 24 June 2018 at Oruku where confirmation for the remaining two hapu groups will occur.

6.2 Treaty of Waitangi Settlement Progress from Hapū - May 2018

Violet Sade advised that she requested a report from Te Kotahitanga group to bring to Te Kārearea. Te Kotahitanga declined and advised they did not want to provide a report until settlement is finalised.

Sharon Kaipo advised there was a meeting held with Andrew Little on Sunday 13 May 2018. There will be no account of this meeting until a report comes back to the people. Te Kotahitanga are meeting 26 June at Takahiwai.

Janelle Beazley spoke of the meeting held with the Minister and four Tuhoronuku leaders. No further report has been issued.

6.3 Action Log - May 2018

Jill McPherson provided a verbal update on the Action Log.

- There were no further actions from the last Te Kārearea meeting.
- There are a number of actions awaiting an outcome from the Rates Review and the Long Term Plan finalisation. There is a Council meeting today to formally deliberate on the LTP.
- NRC are joining other councils on the Environmental Hub project.
- At the March Te Kārearea meeting issues were raised regarding damage on the Pīpiwai and Henare Roads. Works have now concluded on both roads.

Sharon Kaipo extended an invitation for Council staff to Mangakahia to discuss rates with locals. Alison Puchaux (Revenue Manager) will be advised to contact Sharon to organise.

Violet Sade expressed concerns regarding Maori land rating, particularly coastal Maori land, and the value of houses built on Maori land being rated in the same manner as general land. It was explained that though the capital value is noted on the rating notice it is the land value properties are rated on.

Huhana requested an agenda item on mainstream vs Maori land rating.

Her Worship the Mayor advised that the Rates Remission and Postponement Policies are available on Council's website ([link here](#)) which can clarify who is eligible. At present Council bases rates on the land value not on capital value.

Waimarie Bruce-Kingi counselled that whānau should be invited to marae to hold hui regarding rates and remissions possible. Whanau know their own land, they are the holders of information including sites of significance.

There is regional discussion on aligning the remission policy across the North. A timeline for when this will be concluded cannot be provided. The Rating Policy as part of a resource kit is being developed for Marae which will help to explain the Rating Act.

Mira Norris spoke of a lack of understanding from agencies around Maori values in relation to their land. Maori land is not for sale and provides the necessities of life.

Her Worship the Mayor suggested after listening to the kōrero that Te Huinga bring a paper back to Te Kārearea on Maori whenua and consequently their position on being rated. There is an opportunity to gain an understanding of the issues from both parties. The offer for staff to go out to marae to discuss rates still applies but an item back to Te Kārearea would be welcomed.

There was discussion on the Focus on Youth (joint initiative). It was requested that clarity is sought on what is funded for youth in our district. There are a number of agencies already providing services for youth and there is a need to confirm that

these initiatives don't overlap. It would require quite a substantial amount of research to ascertain what agencies are and what services are being provided. There are Youth Space Networks who may assist with providing this information.

Cr Murphy will contact Huhana in relation to youth initiatives and the work that the Youth Advisory Group (YAG) are doing.

Deborah clarified that initiatives for youth relates to the aspiration for the succession of knowledge and what our joint commitment is. There was a body of work done on this in the previous electoral term.

The issue is around what gaps there are and what would be appropriate for us to work together. An agreement on outcomes is needed and then work should proceed on specific projects.

Andre and Janelle have updated postal addresses and contacts for marae in the Whangarei District. Marae representatives can contact Andre if they wish to confirm the details are correct.

6.4 Te Huinga Proposal

A paper was presented to Te Huinga and a follow up meeting was held with Aperahama, Huhana and Delaraine to discuss the proposal of Te Huinga's focus for 2018.

It was noted that Te Huinga don't have staff to research and follow up on reporting for Te Kārearea. Te Huinga are all volunteers and a project manager position could be used to move along or follow up on project work.

Her Worship the Mayor advised that today the paper would be noted. The financial implications for Council means that if there is support for this initiative, a decision would need to be made outside of this forum.

Cr Innes spoke of the need at times, for technical capacity because of the complexity of some of Council's processes. The Planning and Development processes often requires specialised knowledge and consultants could be considered. He advised that the working group could also consider these options.

Council's Maori Relationship team are working through the proposal with a sub-group of Te Huinga and will report back with any progress.

7. General Business

Richard Nathan introduced himself and spoke of his achievements including his involvement in the Tai Tokerau District Maori Council. Richard has been involved in documenting the Treaty Hearings. He spoke on his involvement in the negotiations on Poroti Springs.

Peter Vaughan (attached report) spoke on Maori Representation and Participation and expressed his view that Te Karearea should review and progress the development in these matters to ensure benefits for Maori as Treaty partners. He noted that if Te Parawhau had land it could be a location for a Wharewaka. (noted on action log).

A report was tabled by Huhana Lyndon on a meeting held by Te Huinga on 3 May at Oruku. (attached). Discussion ensued on the Puriri Park Development Proposal. It was queried why Council had not notified Te Huinga on the proposed divestment of the land by the Ministry of Education (MoE).

As adjacent land owners MoE approached Council staff to ascertain if there was any interest in Council purchasing this land. Council reviewed the offer strategically and Council officers concluded that the purchase was not a funding priority.

It was queried if Ministries have a protocol in place regarding offering land back to hapu in the first instance. Any reply received back in response to the letter to the various Ministries from Te Parawhau would be of interest in answering this query.

Aperahama advised that there was already a process in place regarding land banking and protection of the land when it falls under a claim. There would have been a request of record of land if Puriri Park had been placed under a protection mechanism or land bank. This process lies with the Office of Treaty Settlements (OTS) not Council.

8. Closure of Meeting – Karakia - Taipari Munro

Meeting closed at 10.58 am.

7.1 Hapū Mandating Update - July 2018

Meeting: Te Kārearea Strategic Partnership Forum
Date of meeting: 18 July 2018
Reporting officer: Dominic Kula (General Manager Strategy and Democracy)

1 Purpose

A verbal update provided by hapū representatives to Te Kārearea Strategic Partnership Forum

2 Recommendation

That the Te Kārearea Strategic Partnership Forum note the verbal update on the mandate progress.

7.2 Treaty of Waitangi Settlements Progress from Hapū – July 2018

Meeting: Te Kārearea Strategic Partnership Forum
Date of meeting: 18 July 2018
Reporting officer: Dominic Kula (Strategy and Democracy General Manager)

1 Purpose

A verbal update on Treaty of Waitangi Settlements will be provided by hapū representatives to Te Kārearea Strategic Partnership Forum

2 Recommendations

That Te Kārearea Strategic Partnership Forum:

1. Note the verbal update of the Treaty of Waitangi Settlements progress from hapū representatives, and
2. Note the attached tabled information provided by Janelle Beazley in June for discussion.

3 Background

A paper by David Tapsell was put forward on what Ngapuhi might look like however no conclusion was reached on this. Pita Tipene submitted a paper regarding principles that are needed to adhere to during the discussions. Jason Pou also submitted a paper of which the technical advisers will come back with messages to deliver to the people and some thoughts about what a transition/implementation process might look like. Technical advisers are engaged to work through details of the model presented by David Tapsell. The technical advisers are David Tapsell, Jason Pou and Willie Te Aho - also invited is Julian Wilcox who has intimate knowledge of the Ngai Tahu process.

4 Attachments

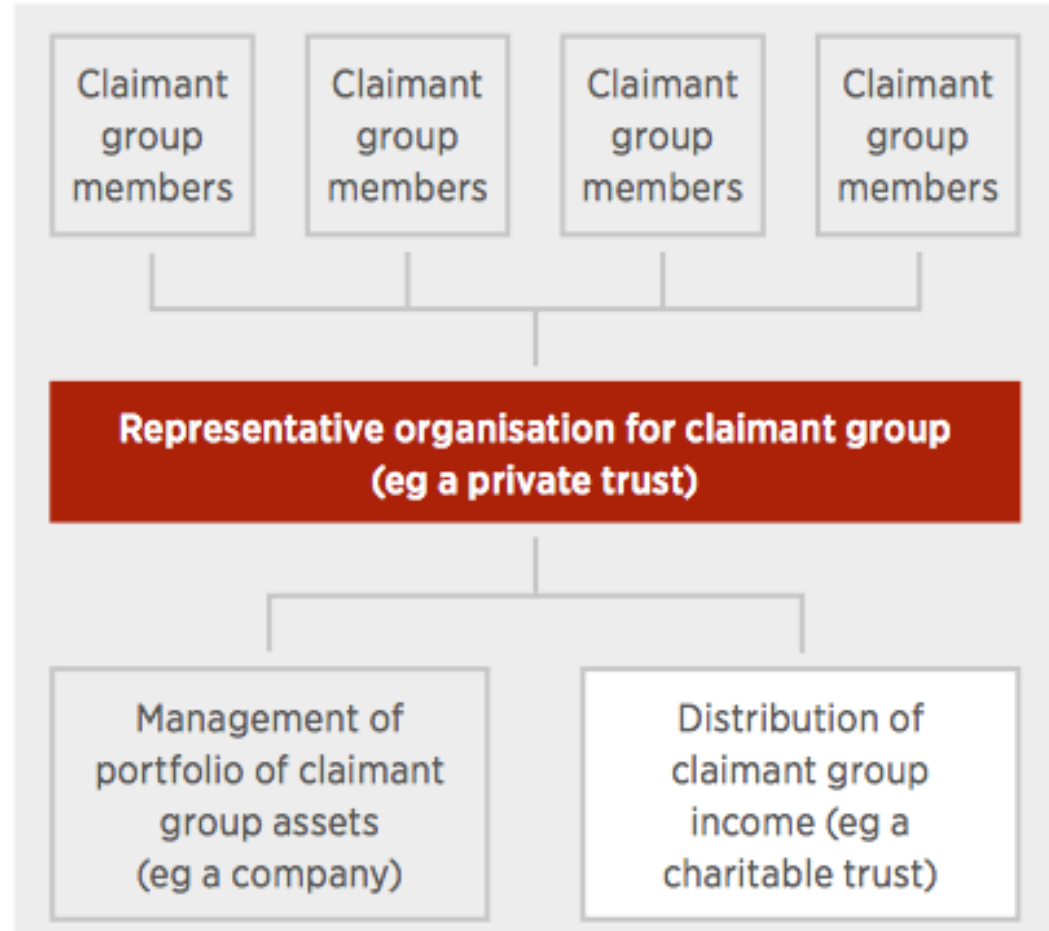
1. Notes for 13 May hui
2. Ngapuhi Structure File Note
3. Te Tiriti O Waitangi Settlement - Tuhoronuku Independent Mandating Authority

Notes for 13 May hui

Look to compromise and find a way forward

- Crown willing to go some way but Tūhoronuku and TKT need to be flexible as well.
- By redefining “Agreed Mandate Arrangements” the underlying mandate itself does not need to change but in practise we hope everyone gets more of what they want in terms of representation etc.

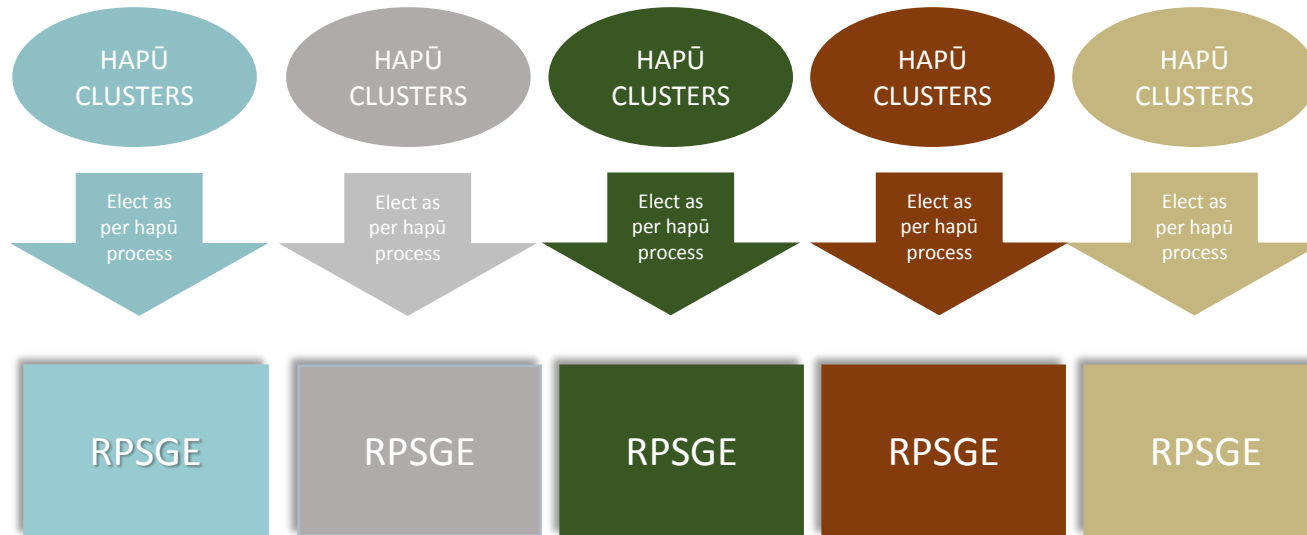
What the Crown usually requires



POTENTIAL PSGE WORLD

16

Constitutions



CONSTITUTION

7 Principles included:

1. Hapū rangatiratanga
2. Manaakitanga (taking care)
3. Tūturutanga (integrity, longhaul)
4. Kaitiakitanga
5. Tikanga (the right way at the right time and right place)
6. Kia horo, te ata haere (hasten with care)
7. Aroha tetahi ki tetahi

Function:

- Ultimate owner or controller of RSPGEs and PSGE

Function:

- Own and administer cultural redress
- Appoint PSGE representatives and receive and administer distributions

Function:

- Economic
- Pan Ngāpuhi lobbying/political
- Delivery of services (not to overlap with RSPGEs)?

Each rūnanga has its own governance structure and it is through this mechanism that the collective Ngāi Tahu voice in the region is represented and heard at local government and community level.

No rūnanga is the same, each has opportunities and challenges shaped by the land, the environment, the towns and cities and the people that make the region home. The rūnanga is the face of Ngāi Tahu at regional level, wanting better education for their children, safer communities and less pollution at the beach.

Te Rūnanga was created to manage the collective assets of the tribe and in doing so support rūnanga in a way that allows each of them to exercise rangatiratanga – to determine their own destiny so they can build and sustain their communities as they have done so successfully for generations.

Papatipu Rūnanga

Te Rūnanga o Ngāi Tahu and Ngāi Tahu Charitable Trust

Notes to the Summary Group Financial Statements Continued

2. TRIBAL, RŪNANGA AND WHĀNAU DISTRIBUTIONS

	2017	2016
	\$000	\$000
Income Relating to Tribal, Rūnanga and Whānau Distributions		
External Funding Received (Non-Exchange Revenue)	3,664	2,754
Other Income	3,827	2,614
	7,491	5,368
Less: Expenses		
Rūnanga Direct Distributions & Development	(10,597)	(12,693)
Culture and Identity	(2,588)	(2,169)
Disaster Recovery	(316)	(30)
Mātauranga Grants and Development Expenses, Housing and Kaumātua Distributions	(7,120)	(4,555)
Natural Resources, Tribal Properties and Mahinga Kai	(2,782)	(2,831)
Strategy and Influence	(1,171)	(1,077)
Whai Rawa Distributions and Operating Expenses	(5,589)	(4,729)
Tribal Engagement	(2,503)	(2,072)
	(32,666)	(30,156)
	(25,175)	(24,788)

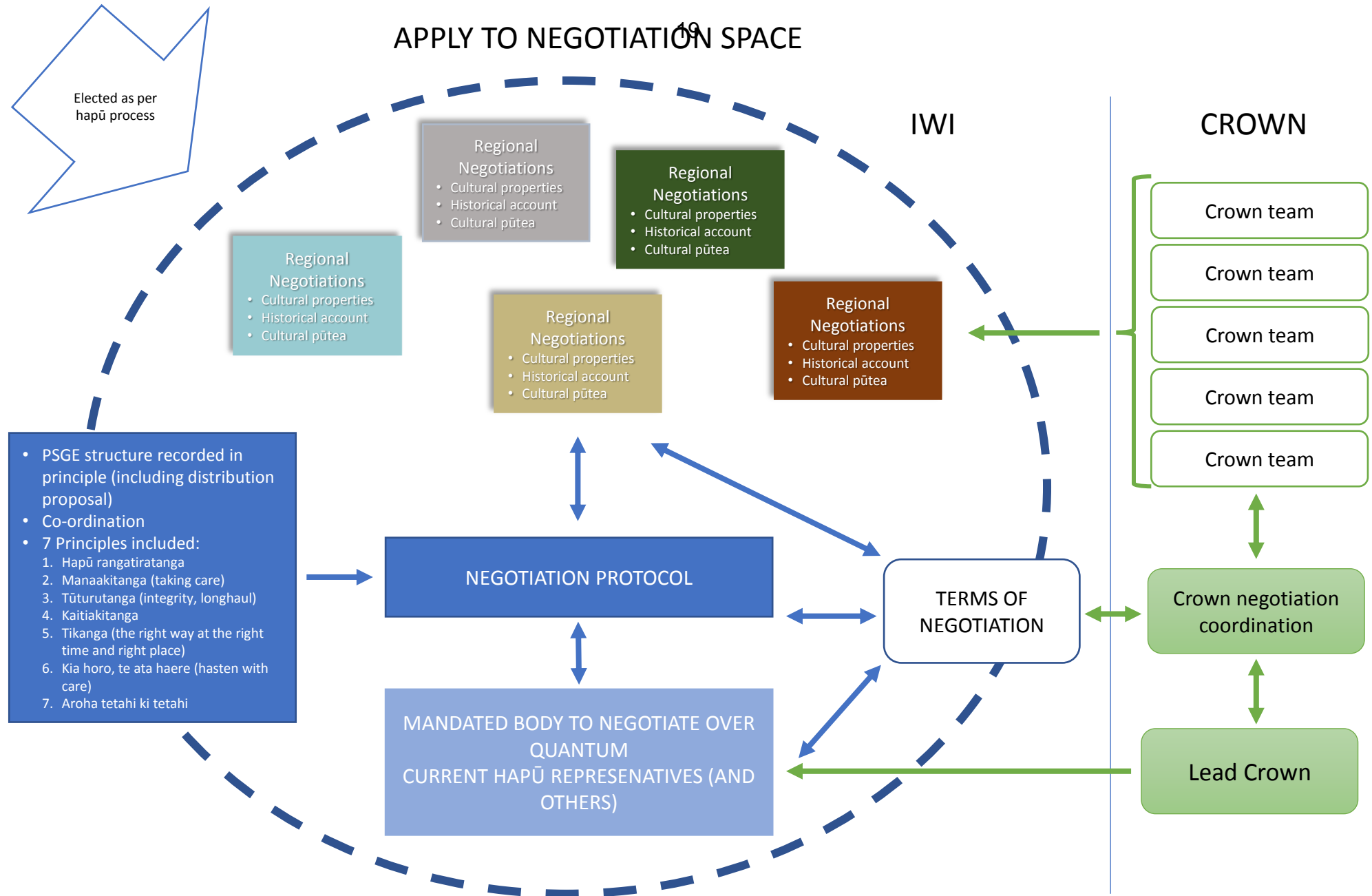
The above costs represent the direct costs of the programmes only and do not include an allocation of general operational and administrative expenses.

Recognition and Measurement – Grants and External Funding

Revenues from non-exchange transactions is recognised when the Group obtains control of the transferred asset (cash, goods or services), and:

- it is probable that the economic benefits or service potential related to the asset will flow to the Group and can be measured reliably; and
- the transfer is free from conditions that require the asset to be refunded or returned to the funding entity if the conditions are not fulfilled.

To the extent that there is a condition attached that would give rise to a liability to repay the grant amount or to return the granted asset, a deferred revenue liability is recognised instead of revenue. Revenue is then recognised only once the Group has satisfied these conditions.



Ngāpuhi Negotiation Protocol

- This would be your document, not the Crown's, but we can help prepare a draft if you want.
- Agreed between the Quantum Negotiation Group and the Regional Negotiation Groups.
- Does not need to be too long but will provide certainty in relevant areas such as:
 - The Seven Principles
 - Who is negotiating what, i.e. Quantum, Historical, Cultural (this is fundamental)
 - Co-ordination of all negotiations
 - Updates – how are the negotiations going ? etc
 - Could include:
 - ✓ RPSGE consultation on AIP Quantum
 - ✓ Ref to Ngāpuhi PSGE Principles

Ngāpuhi PSGE Principles

Function

- Do not want to duplicate functions as may diminish/dilute outcomes for Ngāpuhi.
- Central Quantum held and managed in QPSGE but cultural redress vested directly to RPSGE's – a deviation from Crown policy but we could do it.

Distributions

- RPSGE's can be beneficiaries of the QPSGE for distribution purposes.
- QPSGE constitution can permit/require a % of net profit after tax and retained earning be distributed to RPSGE's annually.

Amendment to QPSGE Constitution

- Major transaction safety plus majority of QPSGE reps required before vote can be put to people.

Representation

- RPSGE representatives will be elected by the hapū
- The Crown will have minimum requirements around fairness and process but will otherwise leave it to the hapū to develop their elective process (which will be set out in RPSGE rules)
- Some QPSGE representatives will be *appointed* by the RPSGE's (certainty of notice in QPSGE constitution).
- How many? Will there be other appointors?

Hapū Rangatiratanga

IN NEGOTIATIONS

- RNG negotiate their own cultural and historical account/cultural pūtea?
- RNG representatives are hapū based
- RNG's have consultation on AIP Quantum
- RNG feed into PSGE Development (Ngāpuhi PSGE Principles already recorded)
- ➡ This will be locked into NNP (and by reference Terms of Negotiation with Crown)

Terms of Negotiation (with Crown)

- Consistent with NNP and also standard negotiations rules of engagement with Crown
- Parties would be QNP, RNG's and Crown
- Keep it principled but simple

Significant consultation (i.e. AIP/Deed)

- RNG hapū approve their own redress
- In terms of Quantum redress – ALL Ngāpuhi approve but RNG updated and consulted

POST SETTLEMENT GOVERNANCE

- *Ngāpuhi PSGE Principles* would be the starting point for discussions on QPSGE (recorded in NNP and TON)
- PSGE workstreams (QPSGE and RPSGE) would run parallel to negotiations (this is important)
- Workstream could include QNB and RNB members, plus appropriate Crown assistance
- QPSGE and RPSG's would need to satisfy Crown minimum requirements but Crown can be flexible

Other Matters

HOW MANY REGIONS?

- Are there 5 regions or 6? What are the minimum requirements?
- What about Taura Here?
- Can we discuss this once the other RNG's are in place as indicated by the Tribunal?

WHAT ABOUT THE TE RUNANGA O NGAPUHI?

- A new central QPSGE will be required here. So what happens to Te Runanga o Ngapuhi?
- In other Settlements the Settlement Legislation has been used to transfer all assets and liabilities of an existing entity/entities into a new PSGE. This makes an otherwise complex and costly exercise relatively straightforward.
- For that to happen both the existing entity/entities and the new PSGE need to agree.
- If Ngāpuhi is not able to decide this issue before the Settlement Date the Crown could include provisions in the Settlement Legislation which will only trigger if both the Runanga and QPSGE formally write to the Crown by or before five years from the Settlement Date.
- The Crown have never done this before but it will give Ngāpuhi more time to consider this issue once the Settlement has been completed if required .
- Or, we do nothing.

Look to compromise and find a way forward

- Crown willing to go some way but Tūhoronuku and TKT need to be flexible as well.
- By redefining “Agreed Mandate Arrangements” the underlying mandate itself does not need to change but in practise we hope everyone gets more of what they want in terms of representation etc.

Agreed mandate arrangements

- Crown, Tūhoronuku and TKT agree to a set of Mandate Arrangements.
- Once agreed the parties would co-sign a letter setting out the Arrangements.
- The Arrangements would give everyone certainty NOW and in the FUTURE around key issues for them (in the spirit of compromise) both in terms of the negotiation structure AND key issues to be addressed with PSGE development.
- Monthly report backs on how the Arrangements are working.
- One of the three parties could at any time signal that there is an issue with the ongoing implementation of the Arrangements (disputes resolution).

Next steps

- If we can agree the broad arrangements today, in principle, then they will be written up (in the form of a draft letter) and each party takes back to its people/executive for agreement.
- If required David Tapsell can attend one meeting of Tuhoronuku and Te Kotahitangi (small team executive meetings with your key advisors) to clarify any issues in the draft letter.
- If agreement is reached on the broad arrangements in the draft letter the Minister, Tuhoronuku and Te Kotahitanga representatives will meet/co-sign the letter reflecting that. This will be a significant achievement.
- Then there will be a process to work through to establish the negotiating structure (NNP, TON and rules of engagement/mechanics, etc). The Crown will support this.
- Then negotiations proper can commence.

FILE NOTE

To:

From: [Name]

Date:

Subject:

Kia ora

I have compared the models that have been discussed with the Crown and have compared them to the structure that has been proposed within the Maranga Mai Report.

I found it difficult to follow the Crown proposal as it applied to the Negotiation space, so in the comparison with Maranga Mai I felt it necessary to draw from the modelling of the 'Potential PSGE World'. For the purposes of structures, the matters referred to relating to the way in which any settlement assets might be held, and/or what is a cultural asset as opposed to a cultural property were also ignored.

The other significant matter that is ignored for the purposes of this exercise is the need to include an ability for hapu exclusion or withdrawal. This is an important issue, but not one that impacts on structure.

Both of the proposed models contemplate a regional representational approach, where each region is driven from the hapu level. As such, they both seem to be reflective of the expressed desire to create a structural group that will allow for the expression of hapu autonomy within a collective process.

Both Models contemplate that the regions would work together some way in a collective decision making process, and that one legal body would be created to hold the responsibility for the mandate.

If anything, the Crown proposal probably provides for higher separation by contemplating separate regional negotiations that could take place without necessarily providing for the inter-regional co-ordination of decision making that is proposed by Maranga Mai.

Maranga Mai doesn't necessarily contemplate such a separation by requires that wider discussion among the iwi informs decisions that are made at the regional level to be executed by a mandated group that through the processes above is accountable to the hapu.

A similar approach is contemplated by the Crown, which sees the establishment of a Mandated body that would be subject to a Negotiation Protocol that would determine its makeup and role. I think it is important to note that my understanding is that the 'Negotiation Protocol' would be one that would be determined by the regions, and not one in which the Crown would necessarily have input into other than to the extent that it would be examinable.

Within the Maranga Mai proposal, it would be logical for the decision making process and the way in which Te Hononga Iti executed decisions would be subject to some sort of internal accord to allow for transparency of decision making and implementation.

So whether it be by protocol or accord, it does seem that the models put forward are two different ways of saying the same thing.

In the main, therefore, the concern that probably arises is in the way in which the Crown have set out an expectation of a centrally negotiated quantum. In my view, this arises through a misconception of what quantum is and how it potentially informs, and maybe limits the nature and scope of any negotiation.

I have always taken the approach that the quantum negotiations are really about informing the space to move and potential allocation that might be available within any negotiation. Whether assets are negotiated collectively should not necessarily restrict the way in which they are held.

The point is that some assets might end up being held by particular regions, some assets might be held collectively by some of the regions, some by all of the regions together. How this ends up (and how that informs value) will of course be a hot topic within the scope of the negotiations and will remain an ongoing topic for Ngapuhi to discuss. There does however, need to be some co-ordination.

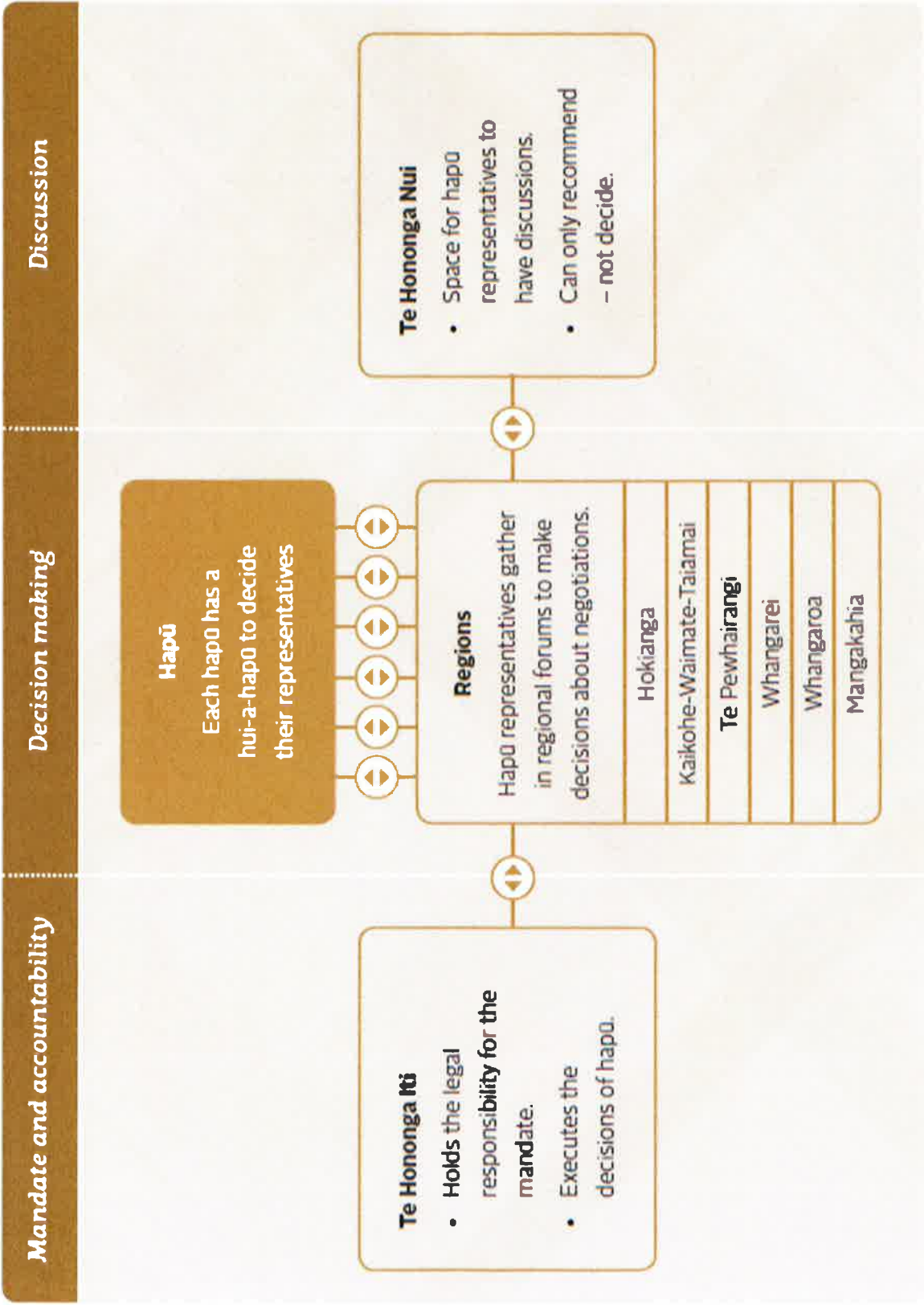
It is with this in mind that I am of the view that the proposals are closer to each other than we think and what is required is an initial ratification process that provides for some discussion around the implementation moving forward. This process is perhaps the most important if any wide ranging trust in the process is to be developed.

In terms of process, I can't understand, given the similarities, why this can't be locked down within an implementation process such as the one that is envisaged at p51 of the Maranga Mai report.

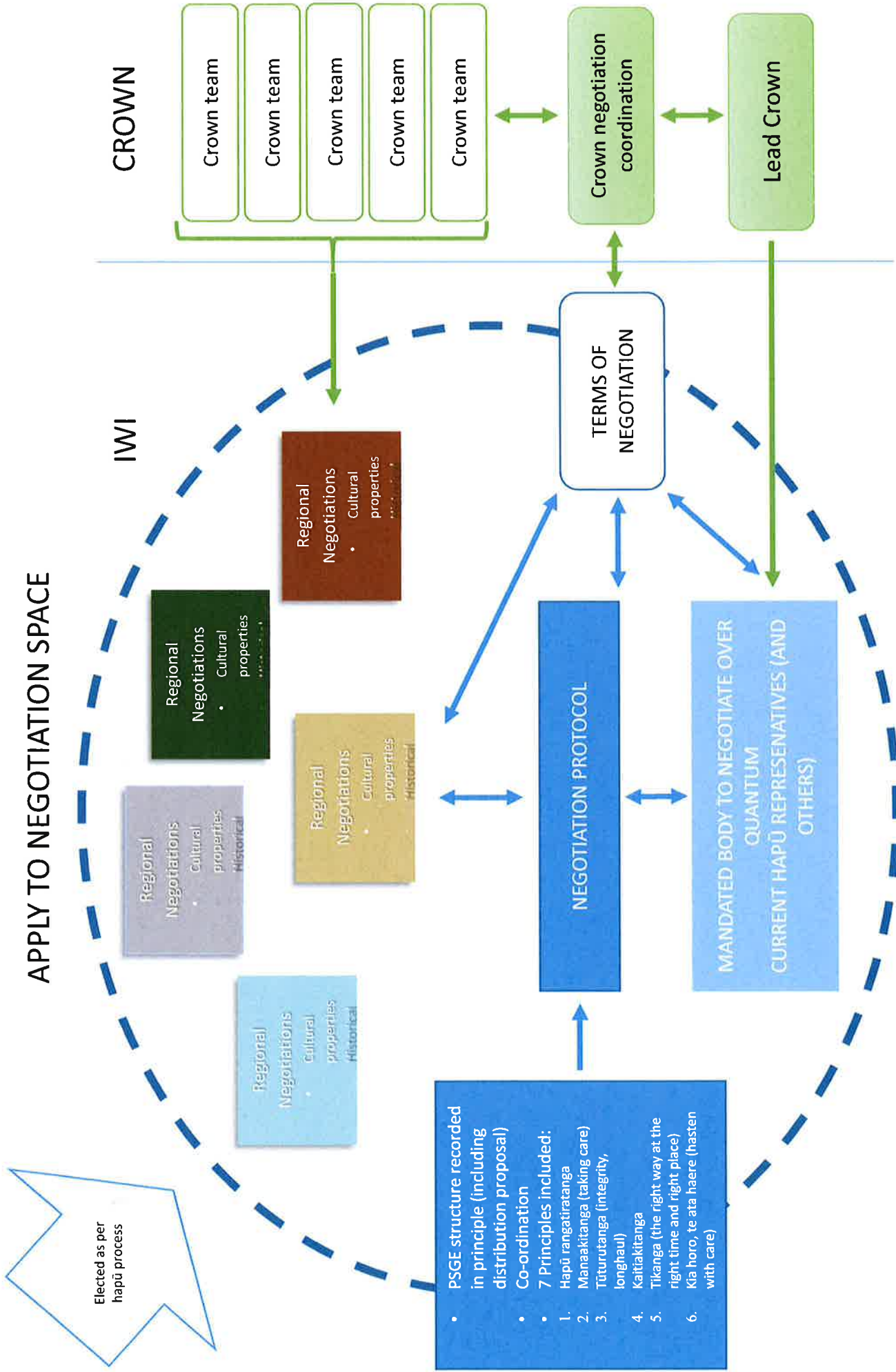
Naaku noa, na
Tu Pono Limited

[Name]
For **[Director's Name or your Designation]**

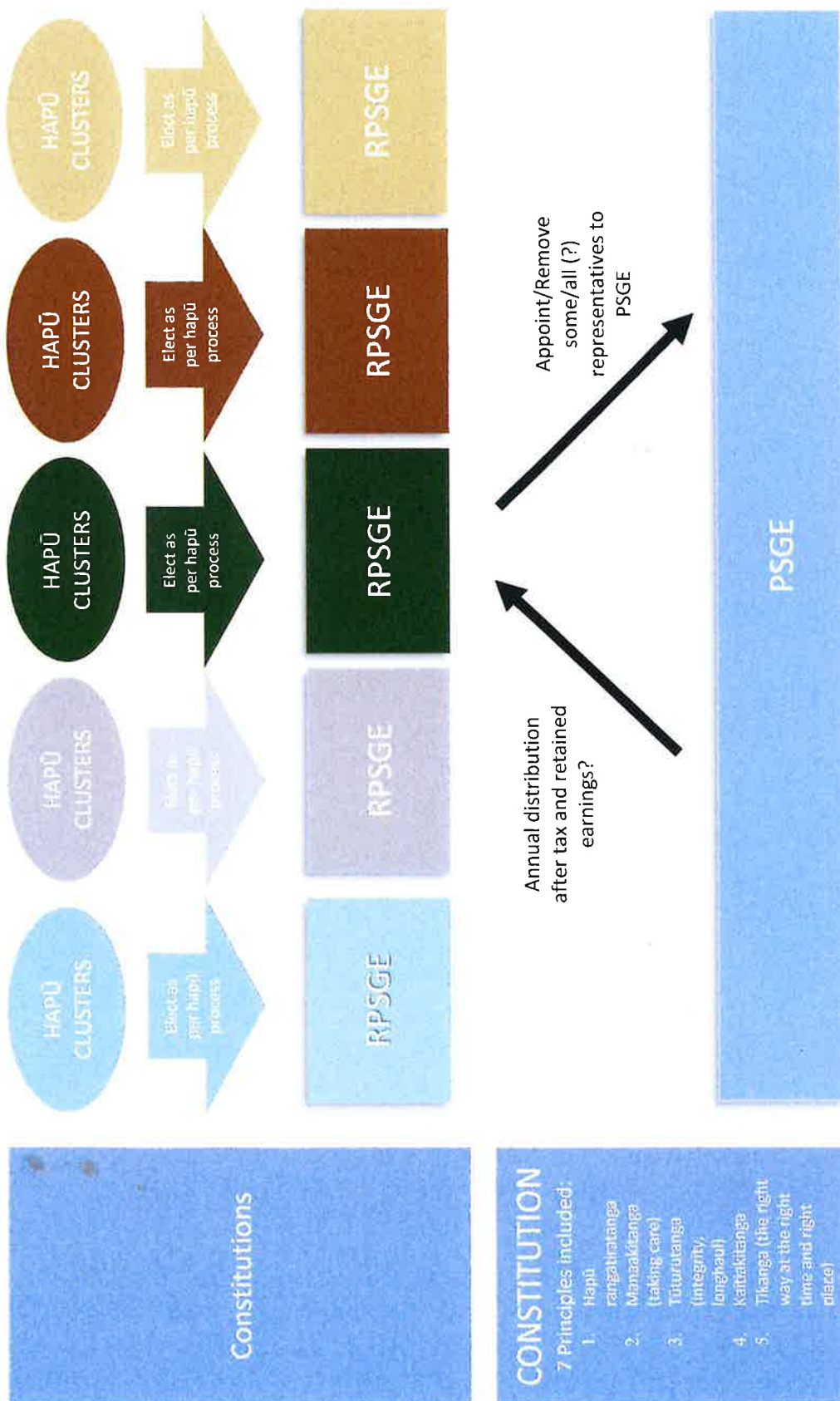
Our proposed structure



The six regions and their names in this diagram are indicative only.



POTENTIAL PSGE WORLD



Function:

- Ultimate owner or controller of RPSGEs and PSGE

Function:

- Own and administer cultural redress
- Appoint PSGE representatives and receive and administer distributions

Function:

- Economic
- Pan Ngāpuhi lobbying/political
- Delivery of services (not to overlap with RPSGEs)?

Tena Tatou Katoa

I can report that we met again yesterday 7 June 2018, to further our push to get a united approach to Settling Ngapuhi's Te Tiriti o Waitangi grievances against the Crown for breaching of Te Tiriti o Waitangi.

I will say up front that the meeting was a great meeting with all agreeing on a kaupapa going forward and I will come to that in the body of this report.

Julian Wilcox attended and gave us a good insight into how Ngati Tahu is operating practically on the ground. All participants were eager to explore that concept and referred to the paper that David Tapsell put up for discussion purposes at the meeting on the 13 May. Although we have not discussed that paper in depth, there are things to like about where the paper is pitched. I attach to this email.

Yesterday Rudy Taylor also tabled a paper written by Jason Pou, paper attached, for consideration by the four of us. Again there are things within that paper that are worthy of consideration as we work toward this elusive common direction. Hone raised the issue about the paper returning to the Maranga Mai report which does not have the support of Tuhoronuku.

The outcome of that meeting is as follows:

Technical advisors will be engaged to:

- Work through details of the model presented by David Tapsell and the paper put together by Jason Pou
- Come up with messages to deliver to the people about the model
- Put together some thoughts about what a transition/implementation process might look like

This material will then be put back up to the principals for agreement at our next hui. Technical advisors will be David Tapsell, Jason Pou and someone to be put forward by Tuhoronuku. Hone and I have suggested that because Julian Wilcox has an intimate knowledge of the Ngati Tahu model that he be put on this committee as of right, similar to David Tapsell on there as of right. Jason Pou has been put on there through Rudy and Pita and Hone and I will nominate someone after discussions over this weekend.

This wasn't discussed at the hui but the Minister has asked for views on what an adequate timeframe would be for the technical advisors to report back. The Minister thought it would be great if we could get the technical advisors to start this work as soon as possible and to provide some material for consideration (via email) by Thursday next week. Hone and I have concurred with this.

Again, Hone and I are buoyed with the way things are developing and we are confident that we will get an agreed pathway over the line shortly. Don't get me wrong, we have a hell of a lot of mahi to do but we are closing in on a framework that we are able to collectively support.

Mauri Ora

Raniera

7.3 Action Log – July 2018

Meeting: Te Kārearea Strategic Partnership Forum
Date of meeting: 18 July 2018
Reporting officer: Dominic Kula (Strategy and Democracy General Manager)

1 Purpose

To brief Te Kārearea Strategic Partnership Forum on the actions undertaken by the Council for queries brought up at previous meetings outlined in the attached Action Log.

2 Recommendation

That Te Kārearea Strategic Partnership Forum note the Action Log attached.

3 Attachment

Action Log

ACTION LOG

	Activity	MEETING DATE	PROGRESS	STATUS
1.	Waka House	16 May 2018 Response	Council staff have been working with Peter Vaughan of the Whangarei Waka Trust over the last 2-3 years to find a location for an enclosure to be built to store their waka. Council has offered a temporary site for the waka enclosure at the Aquatic Centre for up to 5 years. Council officers are working through the details of their use of this site. There are no allocated Council funds for this project, and Peter has been given details of possible funding sources for community projects to cover levelling and construction costs. Elected Members support the establishment of permanent facilities at Pohe Island once the infrastructure to support additional use is developed.	In progress
2.	Rating	March 2018	Maori Land and Rating arrears. Council to look at working with marae to help people understand and feel comfortable with talking to council about rating and rating arrears. Explain the Rates Remission Policy. Request to put this on the agenda for discussion in further meetings. Hapu asked to invite Council to talk at their respective Marae when it suits their schedules.	In progress
		Update: May 2018	Te Huinga to produce a paper on Maori Tikanga on whenue and their consequential position on being rated.	
		Update: May 2018	There was an objection to the practice of the valuation of Maori Land is the same as for General Land	
		Response:	Opteon (our valuation service provider) will be reporting on the tri-annual general valuation in October or November 2018. In the past they have also presented to Te Karearea their findings, so we will ask them to do the same this year.	
3.	Environmental hub at the Fernery	15 June 2017	A scoping report, including cost estimates, has been requested by Te Huinga.	Closed
		Response	Council has determined not to proceed with this initiative at this time.	
		Update March 2018	Request from Allan Halliday for Council to relook at this. Allan to also submit through the LTP process.	Reopened
		Update April 2018	While there is no progress on the Environmental Hub Project the He Kakano Community Nursery upgrade project is proposed for nursery facilities at the rear of the building.	

	Activity	MEETING DATE	PROGRESS	STATUS
4.	Correspondence to Marae	March 2018	Request for all marae to receive copies of any important information from Council. Need to update data base of marae contacts. Andre and Janelle working on updating information.	In progress
5.	Marae resource kits	March 2018	Request for Marae resource kits of important documents e.g. LTP, Rating Policies, Fees and Charges, Urban design etc. Working on what documents would be of interest.	In progress
	Blue Goose Entranceway	20 September 2017	Future developments for the Blue Goose entranceway, potentially could host a cultural precinct which may include a marae for Otaika.	Closed?
		Response November 2017 (no change)	The treatment of this entranceway is being considered as a new item for the Long Term Plan 2018.	
		Response June 2018	Entranceways – \$550k plus inflation planned for year 4/5	
6.	Sealing Rural Roads	19 July 2017	<p>Requests to seal rural roads:</p> <p>All of Wrights Road (partial seal is a project for 17/18 year).</p> <p>Forestry routes.</p> <p>Dust/mud on roads that are school bus routes.</p> <p>Henare Road – access to urupa and marae. This road is unsafe after big rains.</p> <p>A prioritised list of roads to be sealed and dedicated annual budget for LTP was requested.</p>	Closed?
		20 September 2017	<p>Request to seal Ngunguru Ford Rd was made.</p> <p>Further seal extensions and how they are prioritised will be considered as part of the Long Term Plan 2018</p>	
		Response: November 2017 (no change)	Council is intending to repair 3 short sections of Kokopu Rd as the pavement in these locations has failed. These will be completed in the next few weeks. These are ongoing maintenance work required for all roads to keep the travelling public safe. These works do not include the sections of road with the various tight corners which are before the first section of the proposed works, as the pavement through these sections are ok.	

	Activity	MEETING DATE	PROGRESS	STATUS
			<p>The logging companies previously investigated the potential use of Kokopu Rd for returning empty logging trucks because the narrow windy nature of this made this route unsafe as the trucks couldn't traverse the corners without crossing the centreline.</p> <p>Council has allocated \$1.3M to the sealing of an additional 2.5km of Wright and McCardle Rds this summer and tenders for the work close in early November. Therefore, we assume works will commence on the road later in November.</p> <p>Funding for the maintenance of Kokopu Rd and the funding for the seal extension works on Wright Rd come from different funding sources within NZTA and their funding rules do not allow the two activities to be mixed.</p> <p>Council is about to commence the agreed dust suppression programme of works on the District's unsealed logging routes in November.</p> <p>Further seal extensions and how they are prioritised will be considered as part of the Long Term Plan 2018</p>	
		Response June 2018	Seal Extensions – The budget has been increased to \$1m per year to seal roads, the first 2 years will be dedicated to sealing Wright road, criteria for prioritisation will need to be set by council for years following.	
7.	Maori Participation in elections	4 August 2017	Desire expressed to encourage more Maori Candidates and more Maori voting.	Pending
		Response November 2017	This is a matter for the next local government elections to be held in 2019.	
8.	Focus on Youth (Joint initiative)	19 April 2017	Clarification has been requested on what this action means.	Pending
		20 September 2017	Hapu have requested that Council develop some ideas for this initiative.	
		Response November 2017 (no change)	Council will do so and report back to Te Karearea.	

	Activity	MEETING DATE	PROGRESS	STATUS
		Response: February 2018	This arose from a joint Council/Te Huinga workshop soon after the elections. No action to date. Ideas also required from Te Huinga.	
		Update: June 2018	The Community Development Department are looking into this action and will report back to Te Karearea.	
9.	Winstones Quarry	May - August 2017	<p>Winstone Quarry Development – there is concern about placing the overburden onto the Pegram land.</p> <p>GBC Winstones resource consent application for overburden (LU1700100) has been received. The application includes an assessment of effects on the limestone outcrop (Tonkin & Taylor, Preliminary Overburden Disposal Area). There is only a small area of this on the site with the vast majority located to the north-west of the disposal area.</p> <p>The report concludes that there is a low to negligible risk of void collapse due to limited area underlain by limestone and the expected limited thickness of limestone in the area.</p> <p>The Hapu disagree, and have continued to express their concern at each meeting.</p>	Under Action Now with Hearings Commissioner
		Response November 2017 (no update available)	<p>Update: Winstones have requested that the application be put on hold (suspended).</p> <p>Previous meetings: At the request of the CE, Murray McDonald asked CBC Winstones if they would specifically consult with Taipari Munro. They responded as follows:</p> <p><i>As described in our resource consent application, we have an on-going, working relationship with the Ruarangi Trustees, of which Marina Fletcher is our primary point of contact.</i></p> <p><i>Marina is in the final stages of preparing a Cultural Impact Assessment, which addresses the Pegram block proposal, among other matters. It is the preference of both parties to continue working together as we have done so, to date.</i></p> <p>The application was publicly notified on 12 July 2017 so parties were able to make submissions on the proposal. An independent commissioner with Tikanga Maori has been appointed to the Panel to hear submissions.</p>	
		Response June 2018	The Hearing has been held. Decision of Commissioner pending at time of writing.	

	Activity	MEETING DATE	PROGRESS	STATUS
19.	Having a voice in RMA matters amendment to Act	19 July 2017	Hapu expressed ongoing concern about input into RMA matters. They agreed Maori Planning Commissioners could address some of these concerns.	Pending
		Response November 2017	WDC has asked for nominations from Te Huinga for possible Independent Planning Commissioners. Two names have been received. Council is also considering a request for a Mana Whakahono a Rohe from Patuharakeke.	
		Response February 2018	Council has received nominations for Commissioner training from Te Huinga. These people will be registered for the training during 2018.	
		Update: June 2018	A request to Ministry for the Environment officer Hauauru Rae – Kaitaatari Kaupapa Matua/Senior Policy Advisor for advice and guidance on commissioner training was accepted. A date is yet to be confirmed for him to attend a Te Huinga hui, Andre will maintain contact with Hauauru and coordinate a date.	
CLOSED/COMPLETED				
	Issues of pedestrian safety in Tikipunga	November 2017	Pedestrian safety at the new subdivision, close/behind to Totara Primary School. Questions were raised about the safety (for school children) of the new subdivision roading designs.	Closed
		Update/Response:	Issues like this are dealt with at the time of consent – approximately seven years ago. We are aware of one reported incident on Wairau Drive, this involved a near miss of a child. We are monitoring the zebra crossing on Corks Road to see if this be moved away from the roundabout.	
	Rates Structure Review	19 April 2017	In April 2017 Council provided Te Karearea with an overview of the Rating Structure review and agreed to discuss the rating of Maori land as a separate process from the wider engagement process. It was also agreed that Schedule 11 of the Rating Act would be a specific focus of that discussion. A suitable forum for this will be arranged in the near future.	Consultation now Complete
		Several	Interest in a workshop on schedule 11 was repeated.	

	Activity	MEETING DATE	PROGRESS	STATUS
		20 September	Te Huinga invited staff to attend a Te Huinga meeting to have a workshop on the Rating Policy. Also a report to Te Karearea was requested.	Closed
		Response: February 2018	The preferred rating policy will be included in the Consultation Document for the Long Term 2018-28 that will be provided to the members at this meeting.	
	Rates Arrears	24 May 2017	Treatment for Maori land will form part of broader Council rating review.	Closed
		Response: June 2018	Offer still stands for Rating team to visit Marae on invitation to work through options.	
	Pipiwai/Puketitoea Road Junction	March 2018	Slump in road at Pipiwai Junction of Puketitoea Road. Road had been marked but no work to fix.	Closed
		Update/Response:	Work will be completed in the next few weeks. 7/5/2018 update – Contractor advised work completed. WDC Roding Inspector will be going out to take photos and ensure work is completed.	
	Henare Road	March 2018	The continuous rain we have had lately has damaged Road on numerous occasions. There are no drains or culverts until you get to the lowest point of the Road. Water overflow scours both sides of the road and causes potholes and corrugations. When is road maintenance programmed?	Completed
		Update/Response:	Our Northern Roding Inspector has advised that there are works programmed for Henare Road for within the next few weeks weather dependant. 7/5/2018 update – Contractor advised work completed. WDC Roding Inspector will be going out to take photos and ensure work is completed.	

	Activity	MEETING DATE	PROGRESS	STATUS
	Registering Waahi Tapu (and other sites of significance to Maori)	20 September 2017	There was general concern expressed regarding Sites of Significance register including: <ul style="list-style-type: none"> - Is there funding for Hapu? - The funding that was provided to Ngati Hau – how was it spent? - What protection does recording a site give? 	Closed – to be reported regularly to Te Karearea.
		Response November 2017	Information that has been received has been reviewed. It is now considered that 75% is collected. This is no longer an active plan change while awaiting further information. There is no additional Council funding for this at this time. Council initially funded this through Repo Consultancy. This funding was to cover costs to the Hapu and the consultant. It has all been spent without the full information being passed to Council from Hapu. The planned Sites of Significance Plan Change is reliant on this information so a new solution will be required. <ul style="list-style-type: none"> • The total amount paid to the contractor was \$172,250 +GST. The contractor has detailed within invoices to Council payments to hapu including Te Parawhau. Council has no evidence of what happened to the 'hapu' payments. • Mapping information has been received from Ngati Kahu, Ngati Hau, Te Waiariki, Patuharakeke, half information from Ngati Wai and Ngati Hine and no data from Te Parawhau. • The contract required the consultant to obtain data from all of the above hapu plus Ngati Korora and Ngati Taka Pari. Information is held by Council in three ways: <ul style="list-style-type: none"> - Confidentially ("black" sites restricted to two staff with authority) - Open - Council-only. When an application is received for a consent that has a site on the land involved, the applicant is required to discuss the development with the relevant Hapu.	
		Update:	Two reports are included on this agenda. One chronicles the history of the project, and the second recommends a way forward.	
			Way forward agreed	
	Pipiwai Road works.	March 2018	A complaint to Roding re overflow of water from Pipiwai Road (near the FNDC end of Pipiwai Rd) directed onto whenua (land). There had been no consent given for this discharge to occur.	Completed
		Update/ Response:	Team have assessed the work and discussed it with the Roding Manager. Work carried out at this site by our contractors has not changed the direction of the stormwater runoff. WDC contractors have only cleared vegetation from existing water tables. If residents want to send all stormwater into one catchment, then Roding will require written permission from the land owner concerned.	

	Activity	MEETING DATE	PROGRESS	STATUS
			Other residents of this area have also approached council and we advised that the only work our contractors have done here is clear vegetation from existing water tables. There are no programmes in place to alter any existing stormwater drains for this area.	
	Hihiaua Cultural Centre	19 April 2017	Support was expressed for the Cultural centre and support for Council to contribute to it financially.	Completed
		Response November 2017 (no change)	Council has committed \$500,000 to the Hihiaua Cultural Centre. It will be available to them when certain milestones are achieved. Fundraising has started and a \$675,000 grant has been secured for Stage 1 to proceed in the near future.	
		Response April 2018	The Crown (Provisional Growth Fund) has contributed a further \$1M Construction due to start this year.	
	Pipiwai/Riponui Road	March 2018	A slump/slip in the road had occurred. There had been a temporary fix with road markings and filling of slump area with hotmix but that this was only a temporary solution and a permanent solution needed to be found.	Completed
		Update/ Response:	Work has been completed.	
	Temperature of Pool at Aquatics Centre	20 September 2017	It was noted that the temperature of the large swimming pool is too cold for comfortable swimming.	Closed
		Response	CLM (pool operators) have reported that they had a problem with two of the four boilers. This resulted in lower temperature in the pools for a period. They have now been repaired.	
	Youth Advisory Council	20 September 2017	Is there cultural supports for Maori youth on the advisory group? The young Maori advocates are strong leaders and thrive in their Maori upbringing and would like to feel safe to express their values in this forum.	Closed
		Response	The Maori Relationships Officer is available to the Forum, and attends as required, and if known to the members. He will ensure Maori members are safe to express their culture.	

	Activity	MEETING DATE	PROGRESS	STATUS
	Porowini Terenga Paraoa Marae – Traffic Impact Report	May-August 2017	<p>Three lanes on Tarewa Road cause an issue for the entrance. What can be improved in future?</p> <p>It was noted that the three lanes on Tarewa Road have caused an issue for the entranceway. Request was that the committee would like to see the Traffic Impact Report for this and what can be improved in the future.</p> <p>The Marae has a vehicle crossing on Tarewa Rd. There are 3 traffic lanes northbound in this location directly outside the vehicle crossing. Historically, there has been 2 lanes northbound in this location.</p> <p>In 2012 the right turn bay was added by taking land and widening the road on the opposite side of the road. Apart from this widening, all other works were undertaken within the road reserve. No resource consent was required and therefore no Traffic Impact Report was completed and was not a requirement.</p>	Closed
			Porowini Terenga Paraoa Marae entrance – a marked “KEEP CLEAR” on Tarewa Road was discussed as an option to provide safer entrance to the Marae. Traffic engineers declined this request. It was asked that WDC re-consider this.	
		Response	WDC Traffic Engineers have stated again that a “KEEP CLEAR” area will not be possible. This is because of the nearness of the vehicle entrance to the traffic lights and that it is double-laned.	
	Whangarei Waterfall issues	November 2017	<p>A number of issues in regard to the Whangarei Falls reserve were stated:</p> <ul style="list-style-type: none"> - The water smells when it is low. - The rubbish bins need to be cleared more often. - Buses and cars make it unsafe for pedestrians. - There are dogs wandering in the area. 	Closed
		Response:	<p>These are on going issues continually being monitored by NRC, Parks, Waste and Regulatory Departments.</p> <p>When these issues occur, it is best for the public to call these issues into Council when they are occurring, straight away.</p>	
	Opening hours of toilets at The Hub	20 September 2017	Can these toilets be open to coincide with the Inter-city Bus timetable?	Closed
		Response	The toilets are only open when the i-Site is open – 9am-5pm seven days a week. There is a sign on the door directing people to other public toilets with clear directions on how to get to them for times when the i-Site is closed.	

	Activity	MEETING DATE	PROGRESS	STATUS
	Entrance to Otangarei via Puna Rere	May 2017	<p>Entrance to Te Hononga Street off Puna Rere Drive needs better signage and lighting – easy to miss.</p> <p>It was noted that the intersection is not clearly marked and has poor lighting. Request was to check for signage and lighting.</p>	Closed
		4 July	There is a request for higher than standard signage and lighting. Options for the entrance to Te Hononga Street, Otangarei to be investigated and brought back to a future meeting.	
		16 August	Signage has also been requested to mark the entrance to the Otangarei Walkway.	
		Response	<p>There is planned signage for the walkway.</p> <p>Investigations show that Puna Rere Dr has a Street Light at the intersection with Te Hononga St, and the intersection is clearly marked according to the roading standards.</p> <p>Otangarei Neighbourhood Safety Panel in principle, support signage around the entranceway to Otangarei and if possible signs for the park and the walkway. They would like to have some input in the design and location of the signs. The request for the Otangarei Community to create a sign will now progress through the Community Development Team, via their Community Village Planning. LED street lights are being installed over the next 18 months. These are an improvement over existing lights.</p> <p>Additional signage has been approved for:</p> <ul style="list-style-type: none"> • “Otangarei” to be included on NZTA green destination sign at the corner of State Highway 1/Puna Rere Drive; • Signage has been included at the intersection of Puna Rere Drive/Te Hononga Street. 	
	Participation in RMA matters	4 July 2017	Concern expressed that Maori were not included in decisions on RMA matters – especially issuing of resource consents.	Closed
		4 August 2017	Again – there was concern that some hapu were not being notified of all resource consents.	
		20 September 2017	Further concern was expressed that some hapu are not receiving notification of all resource consent applications as they expect.	

	Activity	MEETING DATE	PROGRESS	STATUS
		Response	No changes have been made to notifying Hapu of resource consents in their areas of interest. All go to Hapu where they have an interest and/or Statutory Acknowledgment.	
	Te Waiariki Trust (Pataua)	19 July 2017	Not getting resource consent notifications anymore.	Closed
		Response	We have not changed our process re: notifying iwi. Te Waiariki is within our system as having an interest in the Taiharuru, Pataua & Ngunguru areas. As such notified applications within those areas will be sent to Te Waiariki.	
	Hapu Environmental Management Plans	19 July 2017	<p>How does Council use them? Do not replace engagement, should facilitate it. Copy should be given to all Councillors after elections → Part of induction programme? ↓ Hapu presenting their Hapu Environment Management Plans (HEMPS).</p> <p>[Central to concern that they are not satisfied with involvement in RMA and Consents]</p>	Closed
		Response	<p>Hapu Environmental Management Plans (HEMPS) are used through the plan change preparation process to inform the plan change outcomes. Every plan change section 32 evaluation report includes a section analysing the proposed plan change regarding lodged HEMPS.</p> <p>Section 74 of the RMA specifies the matters that council must consider when preparing/changing a district plan. Section 74(2A) states that council <i>must take into account any relevant planning document recognised by an iwi authority and lodged with the territorial authority, to the extent that its content has a bearing on the resource management issues of the district.</i></p> <p>All plan changes are released in draft form as part of pre-consultation, in the past this has included the presentation/workshopping of plan changes with Te Karearea and Te Huinga. Hapu representatives are sent copies of all draft plan changes for feedback and sent proposed plan changes for formal submission.</p> <p>District Plan staff are always available to meet with hapu to discuss concerns, this offer was readily taken up during the pre-consultation of PC94B Papakainga Phase 2. A copy of the plans held by WDC have been printed and put into a folder in the Councillors' Room.</p>	
	Parking at sports parks	4 August 2017	Parking at rural sports fields – cars block roads eg: Springs Sports Complex.	Closed

	Activity	MEETING DATE	PROGRESS	STATUS
		Response	There is no record of any complaints or enquiries on this matter. Should similar issues reoccur, please contact Council's after-hours number and our contractor will respond. If large events are known in advance, please inform Council and we can have enforcement people on site.	
	Helena Bay Holdings	4 August 2017	Consent allowing water taken from Mimiha Creek for garden-irrigation. Should be reserved for Marae.	Closed
		Response	Application put on hold and referred back to Marae.	
	Effective 2-way Communication	19 April 2017	Council calendar and a marae/hui calendar will be co-ordinated to look for opportunities to work together. Completed for Te Huinga Meetings.	Closed
		Response	Marae have been contacted. Awaiting responses. Due to many marae reluctant to provide this information we have stopped asking.	
	Land locked off Rewarewa Road	4 July 2017	Section that is possibly land locked off Rewarewa Road. This will need to be addressed via an outside meeting. Need more detail on property – exact location and lot number. Issue also of beside the waste management ponds, sightlines for going in and out.	Closed
		Response	There is potential access available to the land via a paper road which can be developed by the land owners to facilitate any development.	
	Raumanga Height Block Subdivision	April 2017	Raumanga Height Block Subdivision – Tribal & geological factors – caves can't be accessed	Completed
		Response	In relation to the Raumanga Heights subdivision (Trading Corporate Ltd), this will lapse on 7 November 2017 unless a survey plan is submitted to Council by that date.	
		February 2018 Response	No survey plan submitted, nor any application to extend the consent. Confirmed as lapsed.	
	Ngunguru Ford Road	4 July 2017	How many times does it get graded; cost of grading; cost to have it sealed. Why "Council Maintenance ends here" sign where it is; can it get moved to further along road?	Completed
		Response	The Council maintained portion of Ngunguru Ford Rd is 6.9 km long. The road was graded 10 times in the last 12 months. 1300m ³ of metal was also placed on road during the last 12 months. A total of 25 CRM's have been received for Ngunguru Ford Rd in the last 12 months. However, a number were received at the same time from a number of different people reporting the same issue.	

	Activity	MEETING DATE	PROGRESS	STATUS
			Grading is generally programmed on a monthly routine but can be weather dependant. During the monthly routine all the roads in a particular area are graded generally at the same time over a week or so.	
	Waste Minimisation and Management Plan	June 2017	A request was received to participate in the development of the Waste Minimisation and Management Plan.	Completed
		Response	The plan was sent to Te Huinga and considered at the July meeting.	
	Papakainga Plan		Updates on the Papakianga Plan Change were requested.	Completed
		Response	An update to be provided for the Papakainga Plan change appeal. A report will be on the agenda of the Te Karearea Meeting on 16 August 2017	
	Pataua Boat Ramp & Camp Resource Consent	19 July 2017	What does the consent allow to be built compared to what has been built?	Completed
		Response	What was approved was more than they built – WDC has put compliance in place. What is built is according to the consent.	
	Safety at Whangarei Falls	19 July 2017	Concern was expressed at the danger for visitors to Whangarei Falls	Completed
		Response	The upper falls bridge now has warning signs erected both sides stating “Danger. Do not attempt to cross the bridge if water is flowing over the top of the walkway.” There is also a safety barrier.	
	LTP – early engagement	16 August 2017	Request was made for early engagement opportunities for Hapu.	Completed
		Response	WDC made known we were open to meeting with hapu at their request. Meetings were arranged for Pakotai, and with Patuharakeke.	
	Rubbish on roads		Eg: Crane Road = regular site for illegal dumping. Skips at village centres? eg: Pipiwai/Oakura.	Completed

	Activity	MEETING DATE	PROGRESS	STATUS
			<p>More transfer stations? (Over summer) eg: Opotiki. Get volunteers/community involved?</p> <p>Rubbish from Christmas to Waitangi week at Ohinewai.</p> <p>Litter on Te Hononga Street and Puna Rere Drive.</p>	
		Response	These concerns were referred to the Waste Minimisation And Management Plan process.	

7.4 Plan Changes Consultation Presentation: Urban Areas, Transport & Three Waters and Open Spaces

Meeting: Te Kārearea

Date of meeting: 18 July 2018

Reporting officers: Robert Burgoyne (Planner), Vivienne Lepper (Planner) and Sarah Brownie (Planner).

1 Purpose

To present draft plan changes - Urban Area (**PC88**), Transport (**PC109**) and Three Waters (**PC136**) and Open Spaces (**PC115**) to Te Kārearea as part of pre-notification consultation for the plan changes.

2 Discussion

2.1 District Plan Changes

The Whangarei District Plan (WDP) is a rule book which regulates land uses and subdivision activity in the Whangarei District. A district plan must be reviewed every 10 years in accordance with the Resource Management Act 1991. The review can either be for an entire district plan all at once, or the review can be undertaken in parts on a continuous basis, as long as each chapter is reviewed every 10 years. This is called a rolling review.

Whangarei District Council has elected to review the WDP using a rolling review. This agenda item is about different parts of the WDP that are currently being reviewed and the Plan Changes (PC) for those parts.

2.2 Draft Urban Plan Change (PC88)

The Urban Area comprises Whangarei city and the surrounding suburbs as well as Marsden Point/Ruakaka. It does not include small townships such as Waipu, Hikurangi or Ngunguru which have been accommodated as Rural Villages within the Rural Plan Change package.

The Urban Area provides for a range of living, commercial and industrial activities that are crucial to the wellbeing and identity of the District's population. The location, design and form of urban development are important in accommodating population growth and enabling economic and industrial development. The development of the Urban Area has significant implications for environment and social, economic and cultural wellbeing.

PC88 seeks to replace 11 existing Environments and several Scheduled Activities and Future Environments in the Operative District Plan with the following 14 new chapters:

- Urban Area (UA)
- City Centre Environment (CCE)
- Waterfront Environment (WFE)

- City Fringe Environment (CFE)
- General Business Environment (GBE)
- Local Centre Environment (LCE)
- Shopping Centre Environment (SCE)
- Trade Retail Environment (TRE)
- Heavy Industry Environment (HIE)
- Whangarei Airport Environment (WAE)
- Whangarei Hospital Environment (WHE)
- Urban Residential Environment (URE)
- Medium Density Residential Environment (MDRE)
- Large Lot Residential Environment (LLRE)

PC88 has identified the following key issues with the Operative District Plan provisions:

- Permissive zoning rules which enable commercial and industrial sprawl and create reverse sensitivity effects.
- Poor amenity/urban design outcomes.
- Lack of incentives to promote positive outcomes such as better connectivity, inner city residential development and comprehensive subdivision and development.

PC88 aims to address these issues and improve the overall efficiency and effectiveness of the District Plan provisions while also giving effect to and implementing key statutory and non-statutory documents such as the Northland Regional Policy Statement, The National Policy Statement on Urban Development Capacity, The Whangarei District Council Growth Strategy – Sustainable Futures 30/50, the Blue/Green Network Strategy and the Whangarei City Centre Plan.

2.3 Draft Transport (PC109) and Three Waters (PC136) Plan Changes

District Plan and Engineering Standards

Currently the WDP does not contain technical/engineering rules and instead refers to the Environmental Engineering Standards 2010 (EES) which contains the rules. This causes issues with regards to rule interpretation and implementation, monitoring and enforcement and creates risks for Council. This linkage between the EES and the district plan is being reviewed in response to the updated EES.

The recommended approach is to state the relevant technical rules and standards in the district plan and then reference the EES as a means of complying with those standards. This will improve district plan interpretation and implementation, will better focus the district plan to RMA related matters and will remove duplication between the district plan, the EES, bylaws and the Regional Plan.

Plan Change 109: Transport (PC109)

PC109 seeks to replace chapters 22 and 47 and appendices 1 and 6 of the WDP with one district wide chapter titled “Transport (TRA)”. The Transport chapter seeks to manage the transport network, which includes public and private roads, access ways, service lanes, active and public transport lanes, and on and off road parking. This involves rules relating to topics such as road design and construction, vehicle crossing design, off road parking numbers and layout and landscaping within parking lots.

The review of transport provisions in the district plan has identified:

- A need to more actively promote and provide for alternative transportation options.
- The benefits associated with ensuring larger scale development undertakes integrated transport assessments to better integrate landuse and transport planning.
- A need to promote and require better landscaping within and adjacent to parking lots.
- A need to update the roading hierarchy to match the national One Network Road Classification system.
- A need to review and update the minimum car parking requirements for each activity type and review the building line restrictions and indicative roads.

Plan Change 136: Three Waters Management (PC136)

PC136 seeks to introduce a district wide chapter titled “Three Waters Management (TWM)” to manage three waters resources (wastewater, stormwater and potable water). The WDP manages three waters within each individual chapter for every Environment. The suggested approach will consolidate three waters issues into one chapter.

PC136 seeks to require connection to the reticulated water, wastewater and stormwater networks where public reticulation is available. The EES will then manage the standards of how that connection is provided. Where connection is not available, PC136 sets standards to ensure that wastewater and stormwater are appropriately dealt with and that provision is made for water supply.

The review of three waters management has identified a need to require water impact assessments for larger scale developments to more comprehensively manage three waters resources and their associated effects.

2.4 Draft Plan Change 115 (PC115)

Open space areas in our district provide for a range of purposes which include active and passive recreation, education, culture, community, and conservation. Currently the WDP provides one Environment for all open space, with a single set of rules. These rules are not flexible enough to provide for different types of recreation and conservation activities.

PC115 seeks to categorize open space within the district in order to reflect the varying open space values, uses, and associated facilities. It also aims to provide for and manage the effects of land use and development within and adjacent to the differing Open Space Environments, while also increasing the provision of recreational open space available.

To accomplish this the following three Environments are being recommended:

Natural Environment - seeks to identify areas of open space land primarily managed for the conservation and protection of natural resources. Often these areas are characterized by a low level of development although they may provide for walkways and tracks, access to coastal areas, parking areas, toilets and campsites to facilitate recreational, cultural and conservation activities. The addition of the Open Space – Natural Environment Chapter seeks better management to reflect and preserve the natural, ecological, landscape, cultural and heritage values of these areas while not impacting on those areas of open space where other values are attached.

Active Open Space Environment - seeks to identify and provide for large open space areas where the primary uses are organized activities including events and indoor and outdoor sports. The areas to be identified for this environment consist of sports fields, major parks, hard-court areas, multi-sports facilities, boat ramps, public gardens,

cemeteries, community halls and civic spaces. Generally, this means these areas either currently or potentially are home to a high level of development, public utilization and social interaction. Active Recreation Environment seeks to enable and enhance recreational, community and sports related activities while also managing the potential adverse effects on the surrounding environment that these may produce.

Passive Open Space Environment - seeks to identify local park spaces which are characterised by informal outdoor recreational activities and community uses. Generally, these areas limit buildings and structures with those that do exist supporting the enjoyment of the public open space.

Generally, these spaces are of smaller size and feature lower levels of existing or anticipated development. Some spaces may also be of higher natural and heritage values. These passive areas often require a higher level of maintenance than Natural spaces due to location use and vegetation cover.

2.5 Pre-notification consultation

The Urban Area covers a large area of land and the development of the Urban Area affects many landowners as well as many rural residents who work in and visit the Urban Area. It is important to enable the opportunity for public feedback on PC88 to ensure public opinion is considered. Similarly, Open Spaces and Services affects everyone and so it is important to seek public opinion.

Council is undertaking pre-notification consultation on the plan changes through a website based survey with targeted questions. Survey questions have been designed to be illustrative and interactive to provide users with a more tangible understanding of what the district plan provisions mean.

A general pre-consultation comment form is also available for the public to provide feedback and copies of the full draft provisions will be made available on request. Letters have also been sent to iwi and hapū where an Environmental Management Plan has been registered with Council.

Helpful Resources

Link to Council's website:

<http://planchanges.heretowhere.co.nz/>