

Infrastructure Committee Agenda

Date: Thursday, 13 February, 2025

Time: 9:00 am

Location: Civic Centre, Te Iwitahi, 9 Rust Avenue

Elected Members: Cr Simon Reid (Chairperson)
Cr Phil Halse (Deputy Chair Person)
His Worship the Mayor Vince Cocurullo
Cr Gavin Benney
Cr Nicholas Connop
Cr Ken Couper
Cr Jayne Golightly
Cr Deborah Harding
Cr Patrick Holmes
Cr Scott McKenzie
Cr Marie Olsen
Cr Carol Peters
Cr Phoenix Ruka
Cr Paul Yovich

For any queries regarding this meeting please contact the Whangarei District Council on (09) 430-4200.

1. Declarations of Interest / Take Whaipānga	
2. Apologies / Kore Tae Mai	
3. Confirmation of Minutes of Previous Infrastructure Committee Meeting / Whakatau Meneti	
3.1 Minutes Infrastructure Committee Meeting 5 December 2024	6
4. Decision Reports / Whakatau Rīpoata	
4.1 Looking Forward February 2025	11
5. Information Reports / Ngā Pūrongo Kōrero	
5.1 Waters, Community Infrastructure and Transportation Operations Report – February 2025	13
5.2 Contracts Approved Under Delegated Authority - November and December 2024	105
6. Public Excluded Business / Rāhui Tangata	
6.1 Confidential Minutes Infrastructure Committee Meeting 5 December 2024	
7. Closure of Meeting / Te katinga o te Hui	
<p>Recommendations contained in the agenda are not the decisions of the meeting.</p>	

Please refer to minutes for resolutions.

Infrastructure Committee – Terms of Reference

Membership

Chairperson Councillor Simon Reid

Deputy Chairperson Councillor Phil Halse

Members His Worship the Mayor Vince Cocurullo
Councillors Gavin Benney, Nicholas Connop, Ken Couper, Jayne Golightly, Deborah Harding, Patrick Holmes, Marie Olsen, Scott McKenzie, Carol Peters Phoenix Ruka and Paul Yovich

Meetings Monthly

Quorum 7

Purpose

To oversee the management of council's infrastructural assets, utility services and public facilities.

Key responsibilities

- Oversight of services including:
 - Transportation
 - Three Waters
 - Wastewater
 - Stormwater
 - Flood Management
 - Drinking Water
 - Laboratory services
 - Solid waste, waste minimisation and recycling services
 - Parks and reserves
 - Cemetery
- Accountable for the development and implementation of the Infrastructure Strategy, Activity Management Plans (AMP's) and Development Contributions Policy.
- Operational accountability of performance including:
 - Health and Safety

- Regular reporting on service delivery
- Compliance
- Sustainability
- Finance

- Trends
- Benefits (positive outcomes achieved)
- Customer feedback
- Risk

- Accountability for the delivery of the Capital Programme.
 Committee will receive:
 - Capital Programme financial reporting over a three year horizon
 - Health and Safety reporting
 - Programme reporting
 - Procurement activities and strategies
 - Resourcing issues and requirements
 - Project Management Office gateway reviews and activities

- Procurement oversight - general procurement relating to the areas of business of this committee, within delegations.

- Shared Services – investigate opportunities for Shared Services for recommendation to council.

- Council Controlled Organisations (CCOs) – monitoring the financial and non-financial performance of CCOs whose functions would otherwise fall under the scope of this committee. Includes trading CCOs (CCTOs) and those CCOs exempted under the LGA. Responsibilities include:
 - advising on the content of annual Statement of Expectations to CCOs
 - agreement of the Statement of Intent
 - monitoring against the Statement of Intent
 - for exempted CCOs, monitoring and reporting as agreed between Council and the organisation
 - quarterly reporting on performance

CCOs accountable to this committee:

- Northland Regional Landfill Limited Partnership (NRLLP) – CCTO
- Whangarei Waste Limited (WWL) -exempted CCO

Delegations

- (i) All powers necessary to perform the committee’s responsibilities, including, but not limited to:
 - a) the approval of expenditure of less than \$20 million plus GST.
 - b) approval of a submission to an external body.
 - c) establishment of working parties or steering groups.

- d) adoption of strategies and policies relating to the key responsibilities of this committee (except for those that cannot be delegated by Council under Clause 32(1)(f) of Schedule 7 of the LGA).
- e) the power to adopt the Special Consultative Procedure provided for in Section 83 to 88 of the LGA in respect of matters under its jurisdiction (this allows for setting of fees and bylaw making processes up to but not including adoption).
- f) the power to delegate any of its powers to any joint committee established for any relevant purpose under clause 32, Schedule 7 of the Local Government Act 2002.

The Committee does not have:

- i. The power to establish sub-committees.
- ii. The powers Council is expressly prohibited from delegating as outlined in Clause 32(1)(a)-(h) of Schedule 7 of the Local Government Act 2002; being:
 - the power to make a rate
 - the power to make a bylaw
 - the power to borrow money, or purchase or dispose of assets, other than in accordance with the long-term plan
 - the power to adopt a long-term plan, annual plan or annual report
 - the power to appoint a chief executive the power to adopt policies required to be adopted and consulted on under the Local Government 2002 in association with the long-term plan or developed for the purpose of the local governance statement
 - the power to adopt a remuneration and employment policy.

Infrastructure Committee Meeting Minutes

Date: Thursday, 5 December, 2024
Time: 9:00 a.m.
Location: Civic Centre, Te Iwitahi, 9 Rust Avenue

In Attendance

Cr Simon Reid (Chairperson)
 Cr Phil Halse (Deputy Chair Person)
 Cr Gavin Benney
 Cr Nicholas Connop
 Cr Ken Couper
 Cr Jayne Golightly
 Cr Deborah Harding
 Cr Patrick Holmes
 Cr Scott McKenzie
 Cr Carol Peters
 Cr Paul Yovich

Not in Attendance

His Worship the Mayor Vince Cocurullo
 Cr Marie Olsen
 Cr Phoenix Ruka

Scribe

N. Pestana (Team Leader, Democracy)

1. Declarations of Interest / Take Whaipānga

No interests were declared.

2. Apologies / Kore Tae Mai

His Worship the Mayor (away on Council business), Cr Marie Olsen and Cr Phoenix Ruka (apologies) and Cr Patrick Holmes (late arrival).

Moved By Cr Carol Peters

Seconded By Cr Phil Halse

That the apologies be sustained.

Carried

Item 3.1

3. Confirmation of Minutes of Previous Infrastructure Committee Meeting / Whakataua Meneti

3.1 Minutes Infrastructure Committee Meeting 14 November 2024

Moved By Cr Paul Yovich

Seconded By Cr Simon Reid

That the Minutes of the Infrastructure Committee meeting held Thursday 14 November 2024, having been circulated be taken as read and now confirmed and adopted as a true and correct record of proceedings of that meeting.

Carried

4. Looking Forward

4.1 Looking Forward - December 2024

Moved By Cr Nicholas Connop

Seconded By Cr Deborah Harding

That the Infrastructure Committee notes the Infrastructure Looking Forward Paper for December 2024.

Carried

5. Decision Reports / Whakataua Ripoata

5.1 Contract extension and variation CON21034 Community Road Safety Promotion Activity Services

Moved By Cr Simon Reid

Seconded By Cr Nicholas Connop

That the Infrastructure Committee:

1. Approves a 3-year extension to contract CON 21034 Community Road Safety Promotion Activity Services; and
2. Approves an increase in total contract value to \$4,173,968 (four million one hundred seventy-three thousand nine hundred sixty-eight dollars) excluding GST.

Carried

5.2 Variation to contract CON19021 - Litter Control and CBD Custodial Duties

Item 3.1

Moved By Cr Deborah Harding
Seconded By Cr Carol Peters

That the Infrastructure Committee:

- a. Notes that on the 12 September 2024, the Infrastructure Committee approved a 12 month extension of the contract with Green by Nature for Litter Control and CBD Custodial Duties to cover the period 1 October 2024 to 31 September 2025
- b. Approves a \$788,201 increase in contract value from \$3,384,845.60 to \$4,173,046.60 to contract CON19021.

Carried

Cr Yovich requested his vote against be recorded.

5.3 Petition Received Davies Street and Kamo Road Parking

Moved By Cr Paul Yovich
Seconded By Cr Jayne Golightly

That the Infrastructure Committee:

1. Receives the petition.

Carried

Procedural Motion

Moved By Cr Simon Reid
Seconded By Cr Deborah Harding

That the item lay on the table and come back to the February 2025 Infrastructure Committee meeting.

Carried

Cr Holmes joined the meeting at 9.40am during discussion on Item 5.3. A short break was taken at from 9.50am to 10.01am.

6. Information Reports / Ngā Pūrongo Kōrero

6.1 Infrastructure Capital Programme Report – November 2024

Moved By Cr Nicholas Connop
Seconded By Cr Simon Reid

That the Infrastructure Committee notes the Infrastructure Capital Programme Report - November 2024 update.

Carried

Item 3.1

6.2 Infrastructure Operational Report – October 2024**Moved By** Cr Carol Peters**Seconded By** Cr Deborah Harding

That the Infrastructure Committee notes the Infrastructure Operational Report October 2024 update.

Carried

Cr Connop left the meeting at 10.30am during discussion on Item 6.2.

6.3 Summary of Contracts Approved Under Delegated Authority – October 2024**Moved By** Cr Simon Reid**Seconded By** Cr Carol Peters

That the Infrastructure Committee note the Infrastructure contracts awarded under Chief Executive and General Manager delegated authority.

Carried**7. Public Excluded Business / Rāhui Tangata****Moved By** Cr Scott McKenzie**Seconded By** Cr Paul Yovich

That the public be excluded from the following parts of proceedings of this meeting. The general subject of each matter to be considered while the public is excluded, the reason for passing this resolution in relation to each matter, and the specific grounds under Section 48(1) of the Local Government Official Information and Meetings Act 1987 for the passing of this resolution are as follows:

General subject of each matter to be considered		Reason for passing this resolution in relation to each matter	Ground(s) under Section 48(1) for passing this resolution
1.1	Subdivision Update	Good reason to withhold information exists under Section 7 Local Government Official Information and Meetings Act 1987	Section 48(1)(a)

Item 3.1

This resolution is made in reliance on Section 48(1)(a) of the Local Government Official Information and Meetings Act 1987 and the particular interest or interests protected by Section 6 or Section 7 of that Act which would be prejudiced by the holding of the whole or the relevant part of the proceedings of the meeting in public, are as follows:

Item	Grounds	Section
1.1	To maintain legal professional privilege.	Section 7(2)(g)

Carried

8. Closure of Meeting / Te katinga o te Hui

The meeting concluded at 11.01am.

Confirmed this 13th day of February 2024.

Cr Simon Reid (Chairperson)

4.1 Looking Forward – February 2025

Meeting: Infrastructure Committee
Date of meeting: 13 February 2025
Reporting officer: Jim Sephton GM Infrastructure

1 Purpose / Te Kaupapa

To provide Elected Members with visibility of upcoming approvals, events and gateways in Infrastructure. This includes approvals that will be completed under delegation.

2 Recommendation / Whakataunga

That the Infrastructure Committee notes the Infrastructure Looking Forward Paper for February 2025.

3 Business Case / Strategy

The Draft Report on the preferred location of the **Regional Sports Hub** is being prepared. A Workshop will be held in February to seek Elected Member feedback before next steps are confirmed at a Council meeting.

We're working with the Community developing the **One Tree Point Cycleway** and expect to bring to Council a final plan of the route and an outline of how Council is contributing to this community led cycleway.

4 Engagement / Events

Consultation with the community at Ngunguru on the **Kopipi Footpaths** is being undertaken in early February. This is the first of the unsubsidised footpath projects to be undertaken as part of the new direction taken by Council to address rural and coastal needs that would not otherwise be funded by Waka Kotahi.

5 Procurement

The **Road Maintenance Contract** procurement is progressing well and we are still on target for the Tender Close on the 4th March. Interactives have been held with the industry and there are positive signs in terms of interest. In parallel to this process, we will be creating a **Renewals Panel** so that work can be allocated to Contractors outside of the Maintenance Contractors.

Last year we established a **Resilience Panel** which allows us to work more closely with Contractors to address our remaining slip programme. Over the next month, we will be allocating work to the panel and addressing these remaining slips.

Procurement and contract awards are underway for

- Portland Sport field drainage
- Public Toilet Blocks – Maungatapere, Pipiwai and Parua Bay
- Whangārei Urban Flood Strategy
- Northern Growth Area – Flood Attenuation project
- Wastewater renewals
- Slip repairs on Waters property
- Ruakaka Wastewater – Professional services
- Stormwater level of service improvements and renewals (Hatea Dr/ Rurumoki St)
- Caravan Dump Station
- Poroti main
- Fairway Drive water pump station and reservoir
- Otaika water main renewal in co-ordination with Waka Kotahi
- Loop road water pipeline renewal

6 Delivery

Kamo Road carries over 3000 vehicles in the morning peak and the creation of the additional **T2 Lane** will provide additional capacity to cope with this growing area. This Pilot project - predominantly funded by Waka Kotahi – will be completed over the next month including the second stage north of SH1, provision of additional car parks, works to make the lining clearer and move from zebra crossings to signalised crossings to improve traffic flow. A Council Paper will be coming in March to seek approval of regulatory functions.

Ngunguru Seawall will finally be starting construction in February. The details of the Site Blessing, Construction Management Plan and Monitoring are currently being worked through with Hapu and the Contractor. Once the details of the traffic management have been worked through, a more detailed communication to the community will be provided.

Morningside Flood Mitigation project was awarded to UCCL who will start construction of the pump station in late January. The project is scheduled for completion in June 2025.

7 Significance and engagement / Te Hira me te Arawhiti

The decisions or matters of this Agenda do not trigger the significance criteria outlined in Council's Significance and Engagement Policy, and the public will be informed via Agenda publication on the website.

5.1 Waters, Community Infrastructure and Transportation Operations Report – February 2025

Meeting: Infrastructure Committee

Date of meeting: 13 February 2025

Reporting officer: Andrew Carvell (General Manager - Waters)
 Jim Sephton (General Manager - Transport & Community Infrastructure)

1 Purpose / Te Kaupapa

To provide an overview of Operations that the Infrastructure Committee is responsible for.

2 Recommendation Whakataunga

That the Infrastructure Committee notes the November, December 2024 and January 2025 Operational Reports for:

- Waters
- Community Infrastructure
- Transportation

3 Background / Horopaki

In November 2022, Council adopted committee terms of reference 2022-2025 triennium, with the purpose of the Infrastructure Committee being to 'oversee the management of council's infrastructural assets, utility services and public facilities. These reports provide the Committee with a summary of Infrastructure operations during November-December 2024.

3.1 Financial/budget considerations

Financial information is included in the Capital Programme Finances which is presented at the Finance Committee.

Financial information at a project level will be provided through the Project Lifecycle Management system.

4 Significance and engagement / Te Hira me te Arawhiti

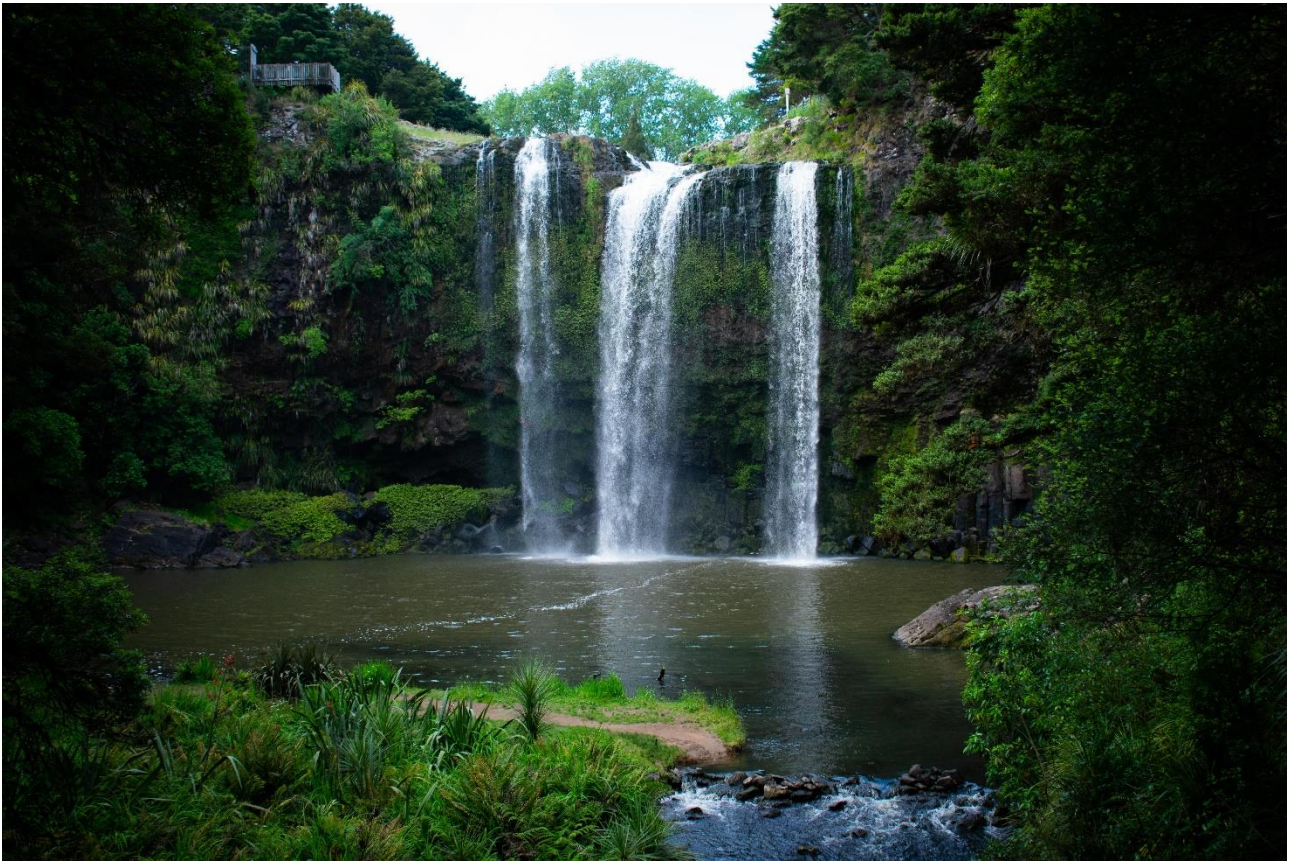
The decision or matters of this Agenda do not trigger the significance criteria outlined in Councils Significance and Engagement Policy, and the public will be informed via Agenda publication on the website.

5 **Attachments / Ngā Tāpiritanga**

Attachment 1 - Waters Monthly Report

Attachment 2 – Community Infrastructure Monthly Report

Attachment 3 – Transportation Monthly Report



Waters Group

Monthly Report

Waters Group Monthly Report

Reporting Officer: Andrew Carvell (General Manager – Waters Group)

Meeting Date: 13 February 2025

Contents

1	Executive Summary	4
2	Health and Safety	4
3	Operational Activities	8
3.1	Customer requests and feedback	8
	Potable water	8
	Wastewater	8
	Stormwater and flood control	8
3.2	Overall Performance	9
	Potable Water Department	9
	Wastewater Department	11
	Laboratory	11
	Stormwater and Flooding Department	12
3.3	Reticulation	13
	Potable Water	13
	Wastewater	14
3.4	Treatment Plants	18
	Potable Water	18
	Wastewater	18
	Stormwater and Flooding	20
3.5	Significant Risks and issues	21
	Potable water	21
	Wastewater	21
	Stormwater and Flooding	21
	Laboratory	21
4	Performance Measures and compliance	22
	Potable Water	22
	Wastewater	23
	Stormwater and Flooding	24
5	Capital Work (From December 2024 – January 2025)	26
	Potable Water	26

Wastewater	27
Stormwater and Flooding	30
5.1 Project details – Specific projects	32
Fluoridation Programme	32
Ruakaka Wastewater Treatment Plant	32

1 Executive Summary

This report covers the following activities in the Waters Group;

- Operational Activities during November and December 2024
- Capital Activities during December 2024 and January 2025

Key points

- No major Health and Safety issues arose, though a small digger slipping off the track was identified as a near miss.
- There was a high level of interaction with customers related to stormwater and wastewater activities, which are being worked through.
- 2024 was the 2nd driest year on record, however we were able to provide potable water reliably throughout the reporting period.
- 5 out of 9 wastewater plants were fully consent compliant. Three of the remaining four had minor non-compliances, primarily associated with seasonal effects. Hikurangi is non-compliant though works to address this are underway.
- The water supply was fully compliant.
- There were 13 dry weather sewer overflows associated with blockages, primarily fat and rags.
- The laboratory processing volumes are steadily growing with notable peaks during the summer periods.
- There has been significant work advanced within our capital programme, of note
 - Improvements with our water network through improved reservoir capacity (Three Mile Bush and Kamo) and pipeline renewals (Poroti and Whangarei Heads)
 - Raw wastewater discharge risks are being managed through work at Kepa road sewer and Parua Bay storage tank.
 - Managing growth in our wastewater network remains a high priority particularly in Ruakaka and Whangarei city.
 - Stormwater resilience is being improved through completion of a new stormwater line in Sorrento Street, Onerahi the Morningside flood mitigation project that began in January 2025 and progress on the Whangarei City Flood Strategy.
 - Wastewater discharge consent renewals are on track for Whangarei City, Oakura, Tutukaka and Portland.

2 Health and Safety

Statistics for the Waters Group – November 2024

<i>Type of incident</i>	<i>Employee reported incidents</i>	<i>Contractor reported incidents</i>	<i>Member of the public reported incidents in our workplaces</i>	<i>Totals</i>
WorkSafe notifiable incident	0	0	0	0
Lost time injury (LTI)	0	2	0	0
Medical treatment injury (MTI)	0	1	0	0
Minor injury	0	0	0	0
Pain and discomfort report	0	2	0	2
Stress and fatigue	0	0	0	0

Incident – Occupational health exposure	0	0	0	0
Near miss incidents	3	5	0	8
Incident – non work medical condition affecting the worker or person	0	0	0	0
New hazards reported	1	0	0	1
Safety observations	2	0	0	2
Success celebrated	0	0	0	0
Totals	6	10	0	16

Note – regards the contractor incidents above, most of them had to be altered from what they advised, as incorrect types provided, according to our criteria.

Employee incidents

All three of the employee reported incidents were regarding contractor worksites.

Contractor incidents

One of the lost time injuries involved a dog attack on a water meter reader and one involved a recycling runner who rolled his ankle.

Statistics for the Waters Group – December 2024

Type of incident	Employee reported incidents	Contractor reported incidents	Member of the public reported incidents in our workplaces	Totals
WorkSafe notifiable incident	0	0	0	0
Lost time injury (LTI)	0	2	0	2
Medical treatment injury (MTI)	0	0	0	0
Minor injury	0	4	0	4
Pain and discomfort report	0	1	0	1
Stress and fatigue	0	0	0	0
Incident – Occupational health exposure	0	0	0	0
Near miss incidents	6	3	0	9
Incident – non work medical condition affecting the worker or person	0	0	0	0

New hazards reported	1	0	0	1
Safety observations	0	0	0	0
Success celebrated	0	0	0	0
Totals	7	10	0	17

Employee incidents

Three of the six employee reported incidents were regarding contractor worksites.

Contractor incidents



One of the incidents involved a digger slipping down a bank. While no one was hurt, this could have been quite serious. The company involved provided a very detailed investigation report with learnings primarily about needing more risk management assessment processes prior to starting the job.

Physical inspections

There is an internal requirement for physical health and safety (H&S) inspections of sites to be undertaken monthly. The only inspections being reported will be those available from our H&S system as these are easily locatable. Other inspections may have been undertaken but they are difficult to readily locate.

A new checklist was requested for use by the Water Distribution team, developed and is already being used (HS169 – Water distribution specific) - *Refer to below*. These inspections are able to be done via a mobile phone when out in the field and photos easily taken and attached. Some of the quality of these inspections is high and now very visible.

The Water department are one team, doing a high-quality job on this task and have embraced our new health and safety system, Assura well.

Type of contractor monitoring	Water	Waste	Storm water
HS016 – Full site inspection	1	1	0
HS102 – Be safe engagement	4	0	0
HS030 – Site spot check	1	0	0
HS140 – TTMP site	0	0	0
HS169 – Water distribution specific	3		
Totals	9	1	0

December contractor monitoring completed

H&S Inductions

We are also developing some Water specific induction checklists, on request, which we are sure will also have a high uptake.

Wastewater – No issues identified during the reporting period.

Hikurangi Land Drainage Scheme – No issues identified during the reporting period.

Laboratory – No significant issues.

Water Services – There were 4 incidents logged by Water Services in December. The first was a car which went into the river upstream of the Ahuroa Water Treatment Plant as mentioned in section 3.4 of this report. Two of the other incidents related to trips and slips, both staff members were not injured. The final incident was a headlamp that came loose during a confined space entry, but no one was hurt.

3 Operational Activities

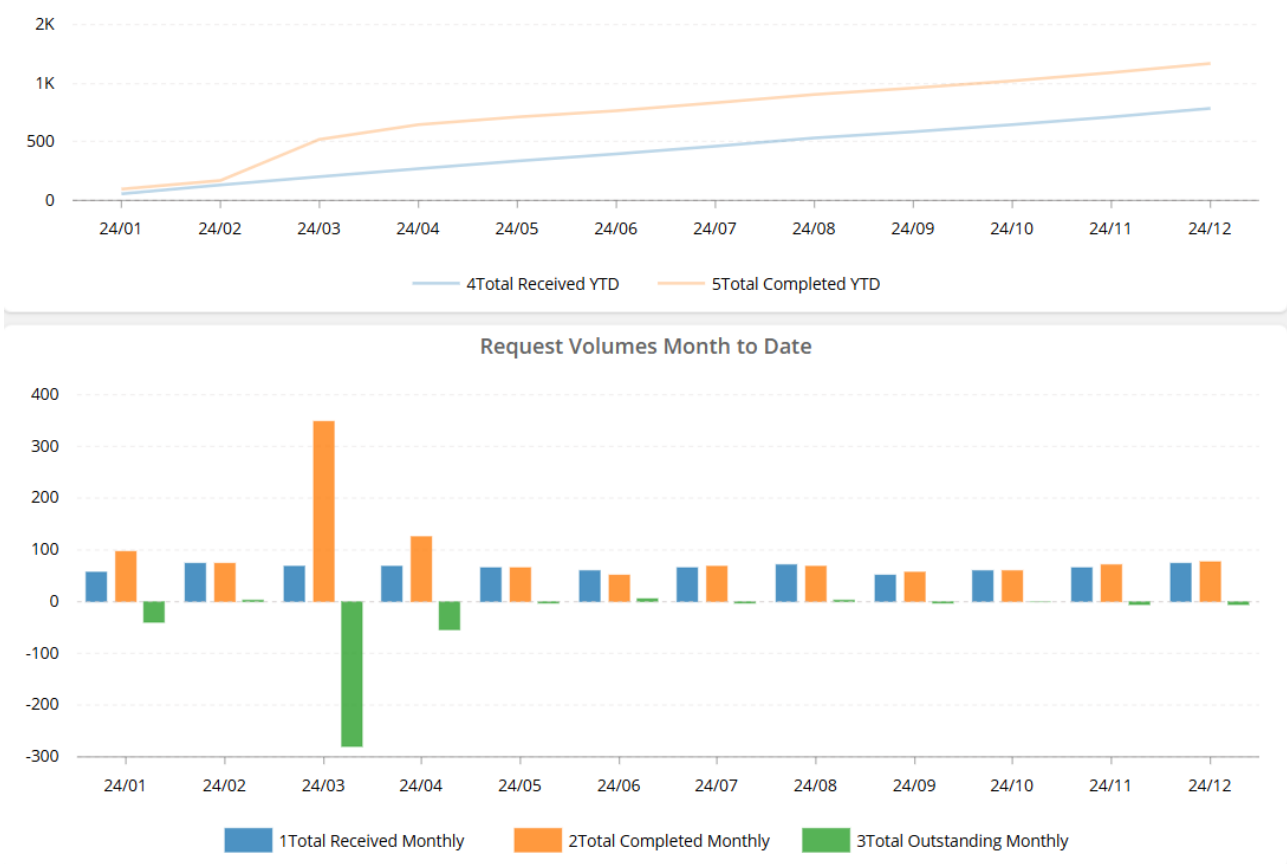
3.1 Customer requests and feedback

Potable water

One complaint was received in December. This was in relation to a customer who did not receive notification of a shutdown. The contractor delivering the shutdown notices had accidentally missed their letter box.

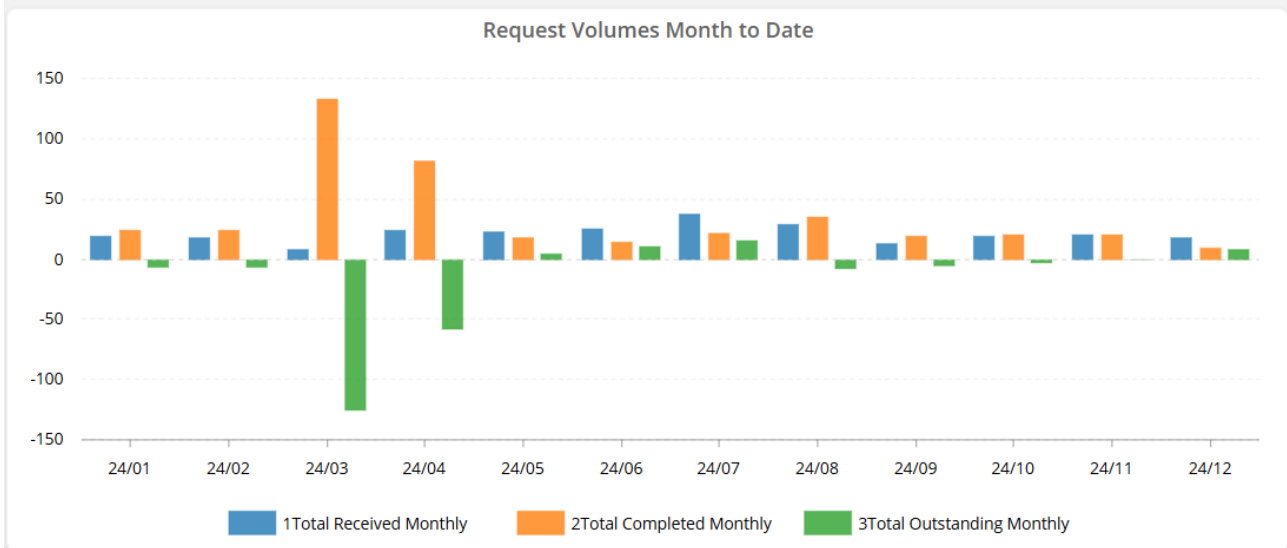
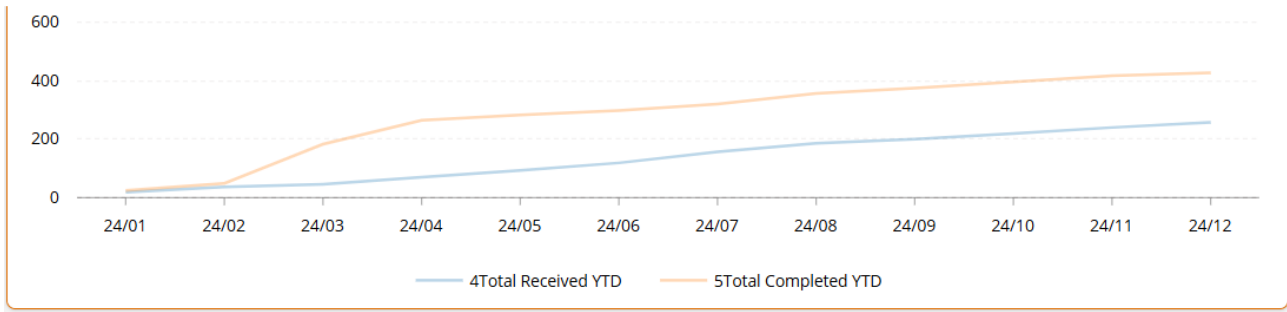
Wastewater

Despite clearing a significant number of requests in March 2024, the Wastewater Department continues to receive a consistent flow of new requests, particularly in the last two months of 2024. The department is actively working to address all outstanding issues.



Stormwater and flood control

Stormwater department cleared a significant amount of Requests in March and Apr 2024. However, a consistent flow of new requests was received in the last two months of 2024, the department continues to work toward addressing them all.

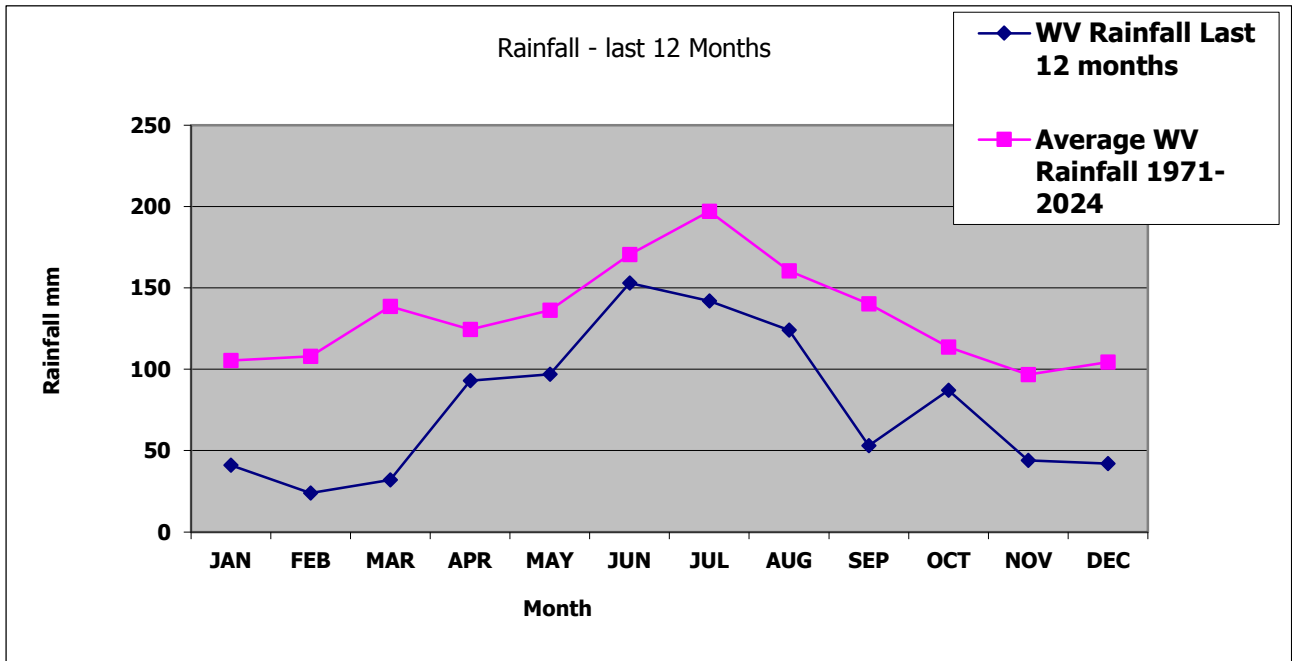


3.2 Overall Performance

Potable Water Department

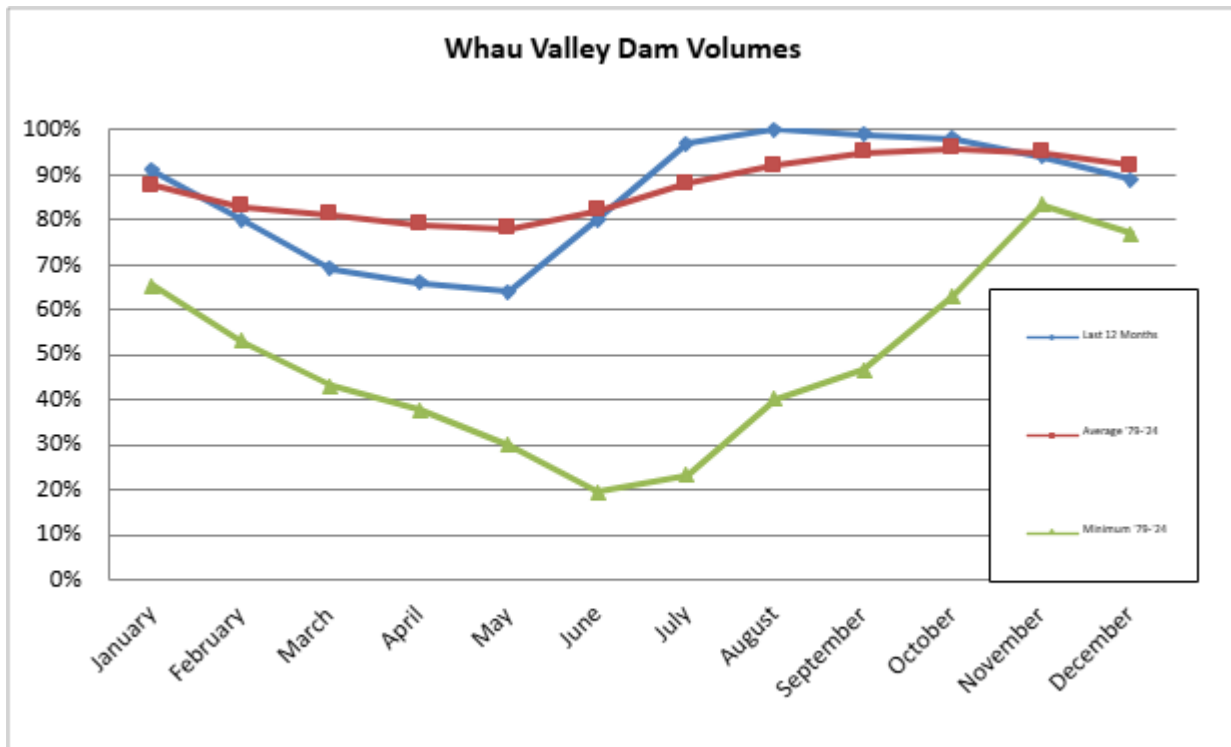
Rainfall and Dam Levels

2024 was the second driest year on record. At Whau Valley Dam only 932mm of rain fell compared to the average annual total of 1,596mm. The lowest ever recorded total was 916mm in 2019. As can be seen from the graph below every month last year had below average rainfall. The lack of rain has led to water restrictions being put in place in other parts of Northland prior to Christmas. It has also led to a number of tanker deliveries to Mangapai as the river level is too low to take at times. The long-range forecast is for average or above average rainfall for the next three months. If this eventuates then we should be able to avoid water availability issues later in the Summer and into Autumn.



Dam Levels

Whau Valley dam continues to drop as the lack of rainfall continues to impact levels. As can be seen from the graph below the level at Whau Valley is now just below average for the time of year. The reason it hasn't fallen further is that other water sources such as Hatea River and Poroti have been used more over the last few months to conserve dam water. Wilsons dam remains above average.

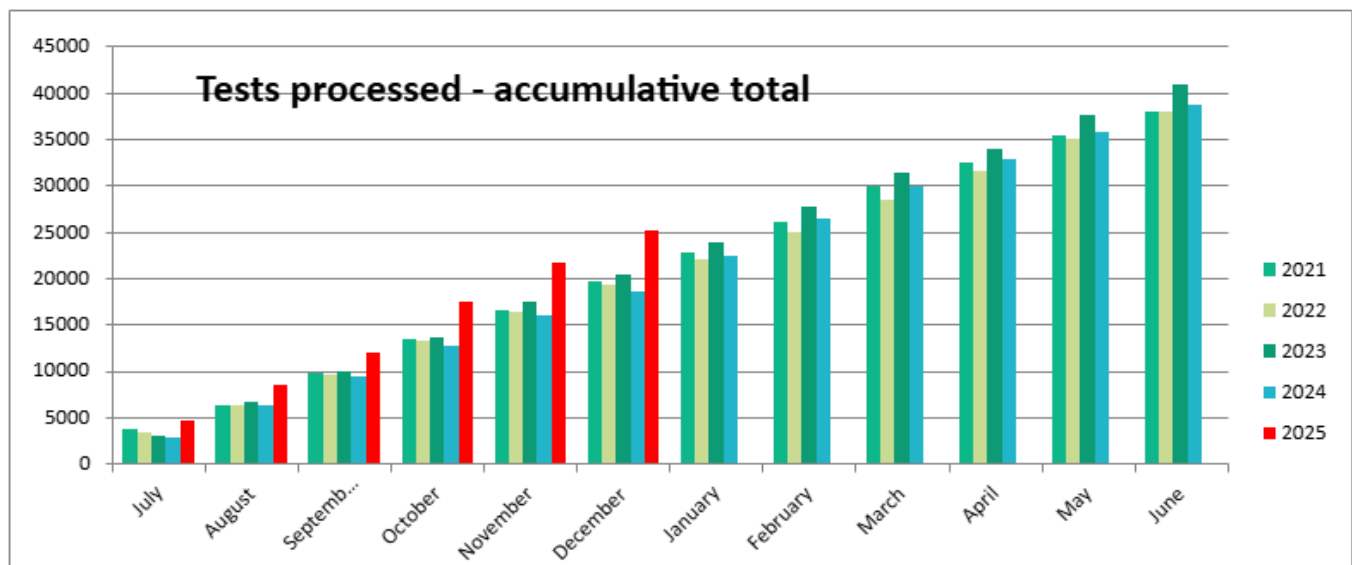


Wastewater Department

Treatment plant consent compliance

Treatment Plant Name	RAG Status	Compliance comments
Hikurangi WWTP	Yellow	Moderate non-compliance regarding Ecoli and minor non-compliance for TSS and BOD
Kioreroa Rd WWTP (Whangarei)	Green	Fully compliant as per NRC visit
Ngunguru WWTP	Yellow	Ammonia elevated during summer month.
Oakura WWTP	Green	Fully compliant
Portland WWTP	Green	Fully compliant
Ruakaka WWTP	Yellow	Low risk non-compliance. Ammoniacal nitrogen concentration elevated exceeding consent limit.
Tutukaka WWTP	Yellow	Low risk non-compliance due to Ecoli exceeding 95 th percentile consented limit.
Waipu WWTP	Green	Fully compliant
Waioletia WWTP	Green	Fully compliant

Laboratory



For November 2024, 975 samples were analysed for 4155 tests. This represents a 22% increase in test volumes compared to November 2023. 3259 of these tests were completed in house, while the remainder were subcontracted. 52% of testing was completed and reported within five days.

For December 2024, 846 samples were analysed for 3441 tests. This represents a 27% increase in test volumes compared to December 2023. 2569 of these tests were completed in house, while the remainder were subcontracted. 52% of testing was completed and reported within five days.

There has been an increasing demand for work for the laboratory across Wastewater and Water services regarding consent renewals as well from external clients from across Northland.

Stormwater and Flooding Department

No significant issues to report during this period

3.3 Reticulation

Potable Water

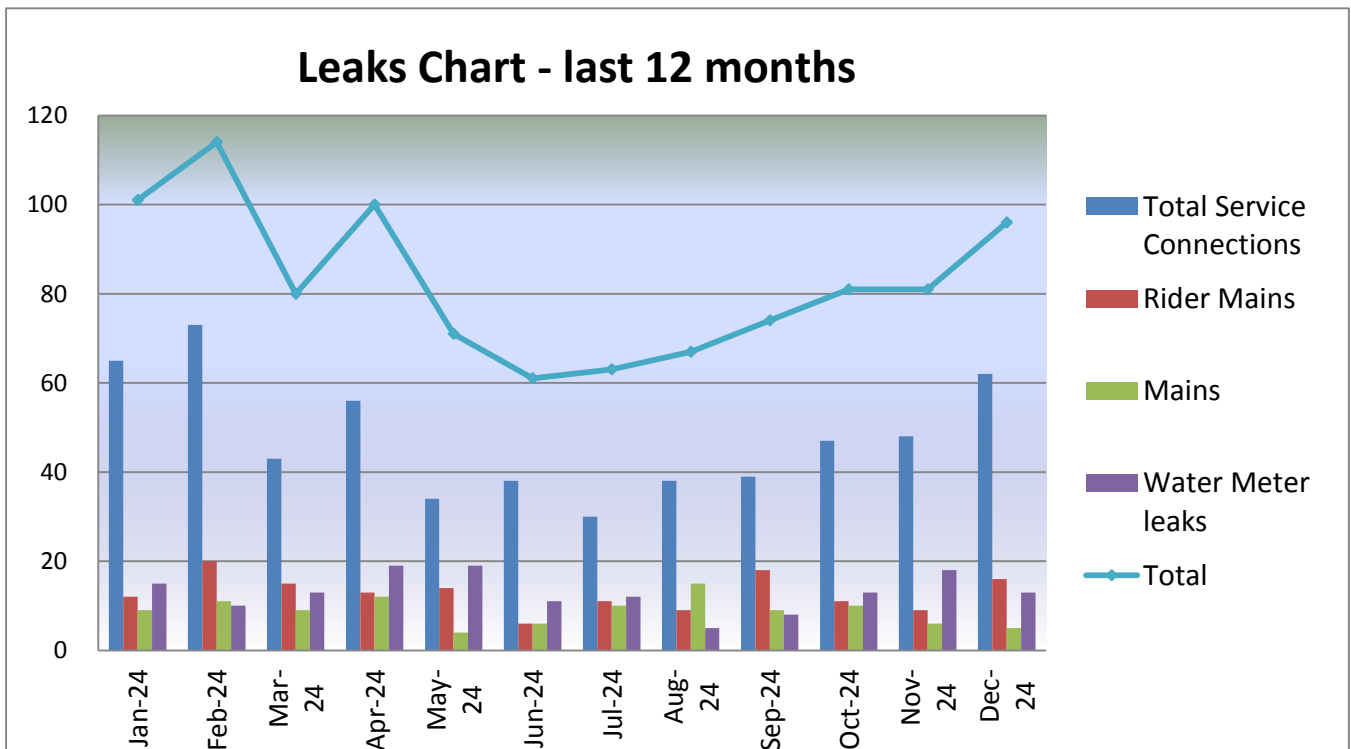
Distribution compliance

Network	Chlorine Sampling			Microbiological sampling		
	Quantity of Samples	Sample Interval	Days used	Quantity	Interval	Days
Whangārei	Pass	Pass	Pass	Pass	Pass	Pass
Whangārei Heads	Pass	Pass	Pass	Pass	Pass	Pass
Hikurangi	Pass	Pass	Pass	Pass	Pass	Pass
<u>Bream Bay</u>	Pass	Pass	Pass	Pass	Pass	Pass
<u>Maungakaramea</u>	Pass	Pass	Pass	Pass	Pass	Pass
<u>Mangapai</u>	Pass	Pass	Pass	Pass	Pass	Pass

All networks were fully compliant. Some disinfection by product results in Bream Bay occasionally exceed 50% of the allowable value.

Network Maintenance

The graph below shows the number of leaks fixed in the network over the last 12 months. The rise in December is normal for the time of year as the ground dries and movement occurs that can damage the pipes. Also, leaks are easier to spot in dry weather, so we tend to get more reports of leaks during the summer months.



Prior to Christmas a leak was detected in the old reservoir at Fairway Drive. It was decided not to take the reservoir out of service over the holiday period as this reservoir is important for the supply to the Northern part of the city. It is planned to take the reservoir out of service in mid-January so it can be repaired and brought back into service mid-February. This reservoir was constructed in 1902 and is reaching the end of its useful life. Staff are working on plans for a new reservoir.

Wastewater

Parua Bay Inflow into Wastewater Investigations

Property inspections for Block 1 are almost complete. There are three blocks in total. Block 1 smoke testing activities are completed. Site records are being uploaded directly to ArcGIS using the Field Maps application. Issues identified will be actioned.

Wastewater Network Modelling

Wastewater capacity assessments are ongoing. Mott MacDonald are progressing with the system performance for the wider WDC wastewater network. This is dependent on model updates.

Gap analysis assessments are underway. Problem identification tasks are ongoing.

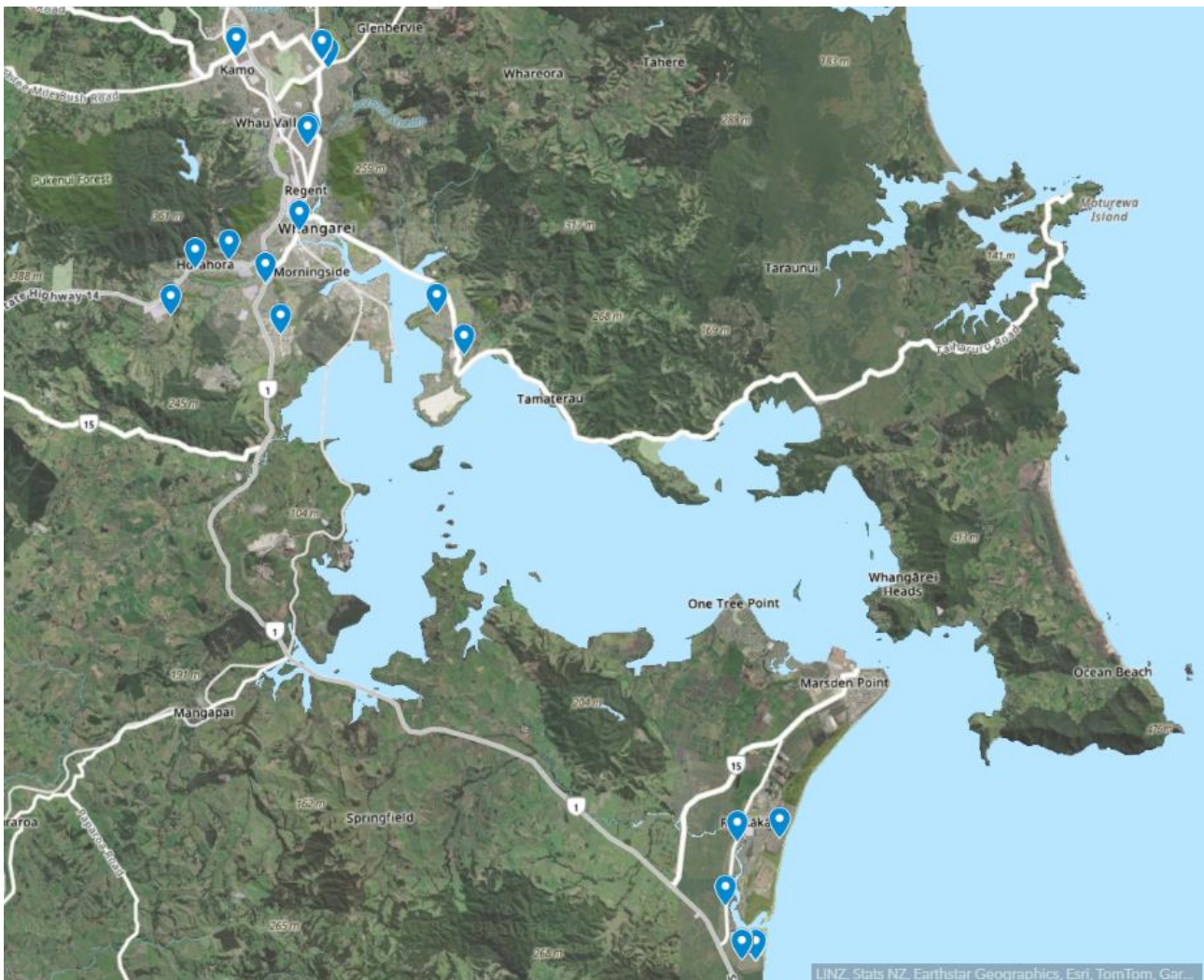
Mott MacDonald have submitted a Gap Analysis Report for Parua Bay Report. Actions are to be discussed at in-person meeting on 31/01/2025.

Work is in progress to improve network asset data.

Reactive Maintenance

There was a total of 111 wastewater service requests during the November/December periods. Pump station callouts represented approximately half of those requests

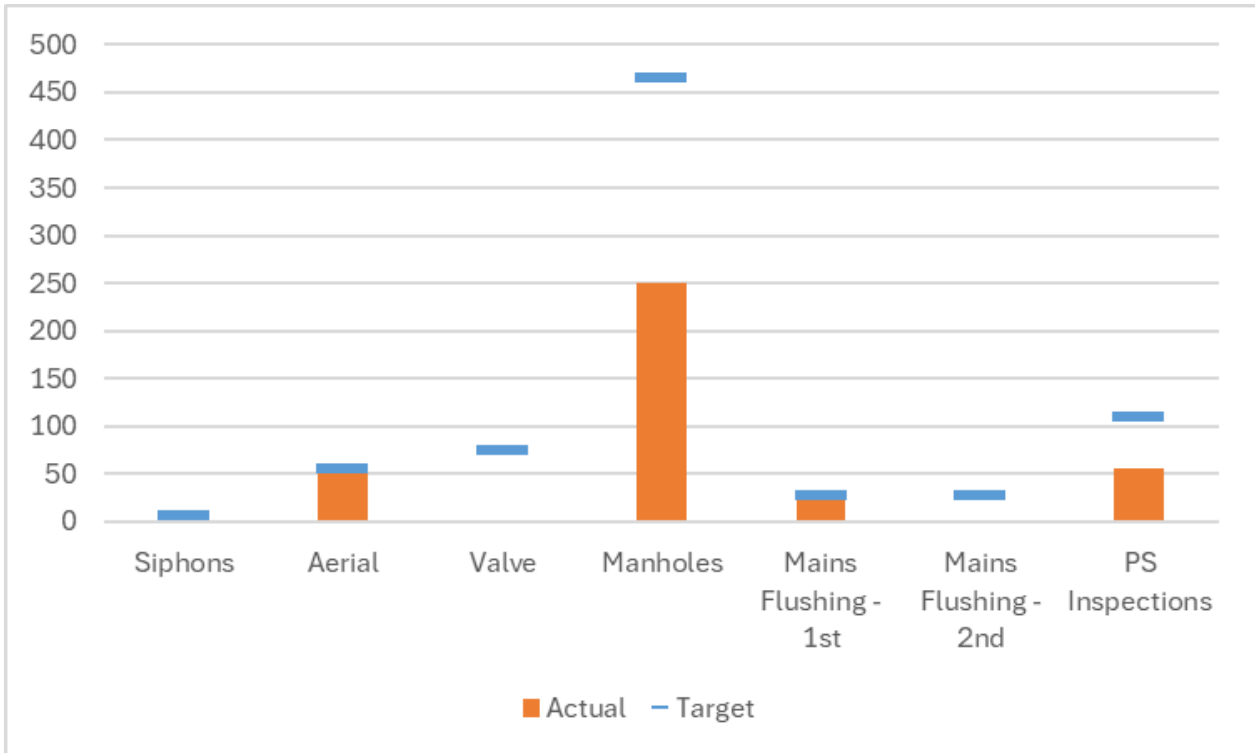
A small number of those service requests related to wastewater dry-weather overflows. The map below shows the location of these wastewater dry-weather spills during the reporting period.



The table below provides details on those spills including those that resulted in the spill reaching the waterways.

Dry Weather Spills							
Date Spill Started	Date Spill Detected	Date Spill Ceased	Location	Cause	Est. Volume	Spill to Water	Action Taken
	18/11	18/11	2 Grant Street	blockage	<200L	No	Clean-up
	25/11	25/11	Rewa Rewa Road	Blow out	<1m3	No	Clean-up
	26/11	26/11	7 Ngahere Drive	Paper blockage	<1m3	No	Hydrojetted , cleared and cleaned
27/11	27/11	27/11	Corner Otaika Road – SH1 & Collingwood Street	Debris in manhole due to milling machine hitting road plate covering manhole previous night	<200L	No	NRC and DHB notified, line and manholes flushed and vacuumed, manhole covers/frames raised and reinstated ready for final hot mix
28/11	28/11	28/11	Behind public toilets at the end of First Avenue	Sewer cross contamination to storm water line, fatty solids blockage in sewer line.	<1m3	Yes	NRC and DHB notified, line cleaned, disinfectant applied to spill area.
	29/11	29/11	5 Whangarei Heads Road	Blocked possibly roots	<1m3	No	Cleared and arranged CCTV
	3/12	3/12	Vine Street	Fat	<1m3	No	Cleaned and sanitised
	13/12	13/12	11 Heretaunga Street	Blockage in manhole	<1m3	No	Cleared blockage
	20/12	20/12	210 Maunu Road	Blockage in sewer main	<1m3	No	Flushed & cleared blockage. Arranged CCTV
	20/12	20/12	29 Nottingham Road	Roots blocking inlets and outlet of manhole	<1m3	No	Dugout & cut roots
	24/12	24/12	26 Catherine Servant Close	Unknown	<1m3	No	Flushed line
	27/12	27/12	9 Te Kamo Street	Unknown	<1m3	No	Flushed line
	30/12	30/12	Tuturu View	Unknown	<1m3	No	Checked all manholes.

Proactive Maintenance



The annual valve maintenance programme is due to commence during January 2025

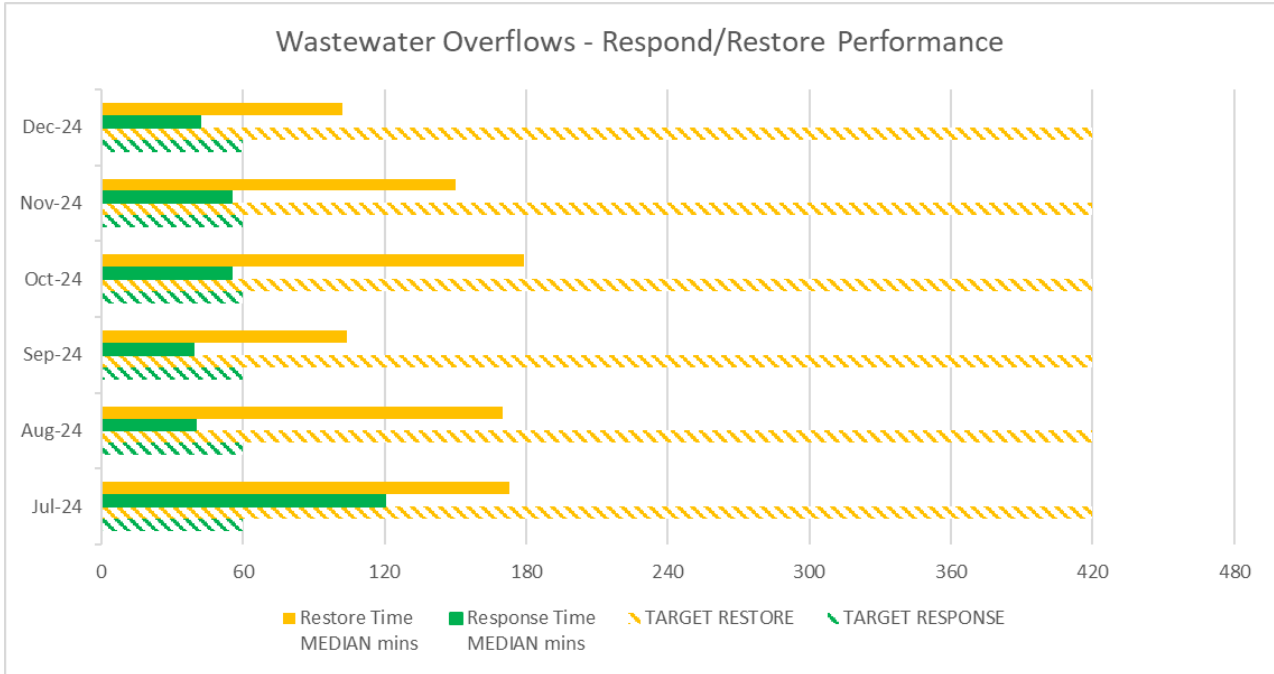
The pump station (PS) inspections are undertaken by a combination of twice weekly, weekly, fortnightly, monthly, and a few annually. These are tracking well.

The second instalment of the 6-monthly mains flushing is to commence during February 2025.

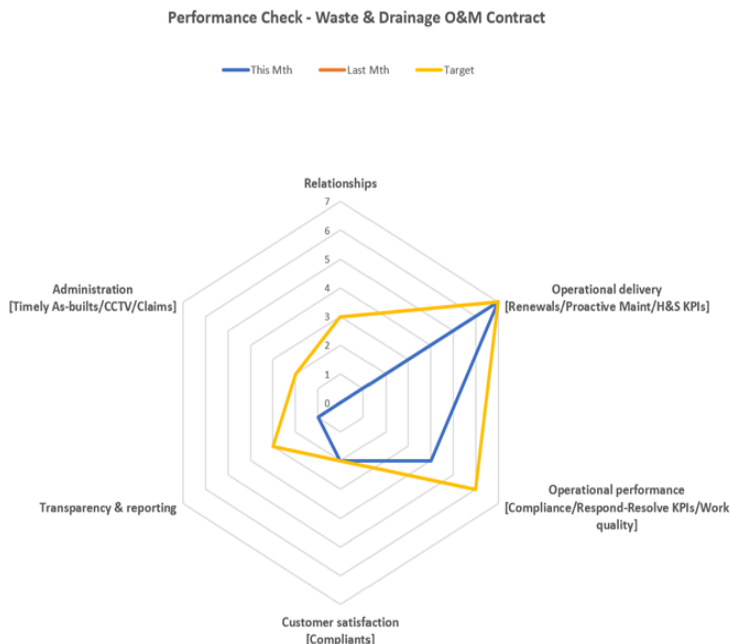
Delivery Performance

1. Restore/Response Performance

Response and restore times for both November and December 2024 have been excellent and comfortably within the target times. This has a *positive* impact on both customer service and environmental impacts.



2. Contractor KPI Performance



December 2024 represents the first period of operation under the revised KPIs of the contract extension. This month provides the *baseline* of which we will be able to measure improvements.

The overall performance across the set of KPIs for December was a *pass*, with *performance requires attention*.

The strengths were in operational delivery as indicated by the above restore/response times, and customer service.

Focus for the coming months will be on administration with the timely provision of as-builts and CCTV data and a re-vamp of the monthly activity reporting to which the insights will flow through into this report.

3.4 Treatment Plants

Potable Water

Compliance

All the treatment plants and the distribution networks were fully compliant for the month.

Treatment Plant Compliance

Water Treatment Plant	Turbidity Conditions	Chlorine Conditions	UV Conditions	Overall Compliance (Pass/Fail)
Maungakaramea	Pass	Pass	Pass	Pass
Mangapai	Pass	Pass	Pass	Pass
Ruakaka	Pass	Pass	Pass	Pass
Ahuroa	Pass	Pass	Pass	Pass
Whau Valley	Pass	Pass	Pass	Pass
Ruddells	Pass	Pass	Pass	Pass
Poroti	Pass	Pass	Pass	Pass

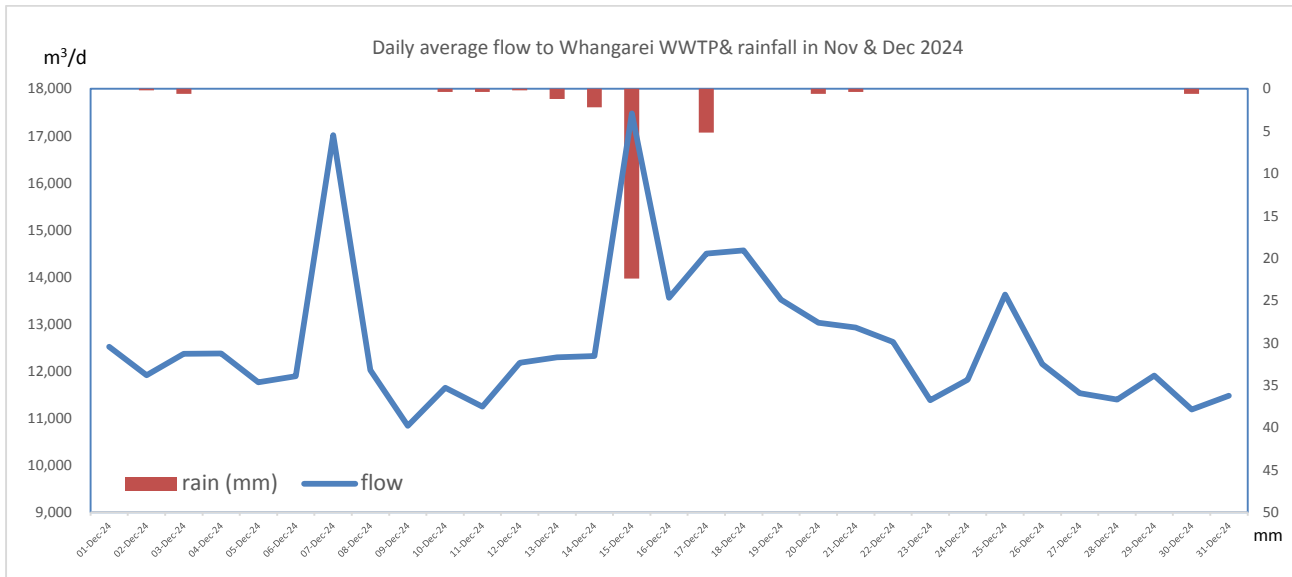
A car ran off the road and into the Ahuroa River a few kilometres upstream of the water treatment plant. As soon as the operators found out the plant was shut down as a precaution and additional river water sampling was undertaken. The plant remained shut down until the car was removed and the river water confirmed as not contaminated.

A raw water e-coli sample was not taken on the 23rd December as scheduled. This resulted in a non-compliance with the Drinking Water Quality Assurance Rules. An incident report from the laboratory is being prepared. This is a technical requirement and does not impact on compliance with the drinking water standards.

Wastewater

Kioreroa Road:

The flow to the Whangarei WWTP during November and December 2024 was generally consistent, with volumes ranging from 10,748 to 17,475 m³/day. However, there were three notable peaks in flow during this period. The highest peak occurred on November 15th with 17,475 m³/day, coinciding with 22.4 mm of rainfall. The second highest peak occurred on November 7th with 17,015 m³/day and the third highest peak occurred on November 18th with 14,568 m³/day. These peak flow periods were strategically used to assist the odour control project by adjusting incoming flow to facilitate the spraying of protective coating material for all inlet work.



- All inlet work structures were sprayed with protective coating as part of odour treatment project.
- Barfoote Construction repaired cracks at digester No 2. Primer seals were applied. Digester no 1 to be scheduled in January.
- We experienced comms issues with low flow UV (ultraviolet) - a PLC (Programmable Logic controller) restart was required to address this issue.
- A new blower motor was delivered for use in the primary clarifier.
- Boiler no 2 was faulting, after tune up, it operated fine.

Hikurangi

The dosage from the Anolyte system is continually being adjusted to optimize the salt usage and achieve disinfection compliance.

Construction of the new clarifier is expected to start in January 2025. We are in the process of securing a landowner agreement to allow this construction work to happen. Once the new clarifier has been constructed, we expect improvements in (total Suspended Solids) TSS and BOD (Biochemical Oxygen Demand) levels.

Ngunguru:

During November, it was observed that ammonia was elevated in our treated effluent. This increase was likely due to higher loading during the summer months. To address this, our surface aerator was turned on continuous operation mode (24/7 operation) to promote nitrification.

Recent lab results confirm that this strategy has been successful in reducing effluent ammonia concentrations below 20mg/L.

Based on this seasonal trend, the aerator will be proactively turned on in October to prevent future ammonia spikes. Effluent ammonia levels will be closely monitored during this period. Normal timer operation can then resume in late April when loading decreases.

Oakura & Tutukaka:

Both plants were granted consents for a 30-year period. A wetland enhancement plan (WEP) was added as a new condition to these consents. This condition requires that planning for the WEP must be approved by NRC within 6 months of the new consents being issued, and wetland planting must be completed within 3 years.

Ruakaka:

Elevated levels of ammonia and BOD are present in the effluent, likely stemming from issues within the facultative ponds. A contributing factor is the excessive sludge buildup in the ponds, reducing retention time and treatment efficiency. Additionally, short-circuiting in Pond 2 is hindering proper treatment and contributing to the problem.

To mitigate these challenges, a sludge survey is recommended, followed by desludging where levels exceed 1/3 of the pond's depth. Additionally, options to optimize flow in Pond 2 should be evaluated, including surface aeration.

The operations team has been developing a plan for a sludge survey and desludging.

Stormwater and Flooding

Mechanical drain cleaning for Hikurangi flood scheme continued.

Contractor completed Te Mata and has been working on Otonga pocket.

Mountain and Ngararatunua pocket are scheduled in mid Jan 25

3.5 Significant Risks and issues

Potable water

Risk event	Cause & Consequence	Controls and Mitigation
Extended period of dry weather	Drought and water restrictions	Maintain dam levels for as long as possible. Implement drought management plan.
Old Fairway Drive Reservoir Leaking	Concrete is degraded and cracks are appearing. Risks to water supply to northern parts of City and Hikurangi	Repair initially then consider options for a new or refurbished reservoir.
Increased water losses	Increases in leakage coupled with reduced demand more meter inaccuracy.	Ensure main replacements are undertaken in timely manner, leak detection is completed, and meter renewals are prioritised. Look at possibility of Smart Meters for whole of a DMA.

Wastewater

Ruakaka WWTP

- Various issues identified such as:
 - pond number 2 has sludge level above the recommended level.
 - evidence of short circuiting leading to higher NH³ and BOD results
 - Change of aeration regime to address summer peak and future demand.

Tutukaka and Portland WWTP

Both new consents were issued: a wetland enhancement plan (WEP) was added as a new condition to these consents. This condition requires that planning for the WEP must be approved by NRC within 6 months of the new consents being issued, and wetland planting must be completed within 3 years. Funding is not available.

Stormwater and Flooding

No issue to report

Laboratory

Long days are continuing for the team just to keep on top of the workload. There is still a significant amount of work required around stock levels and our quality system. Additionally, a lot more preparation is required for these larger projects which impacts our resourcing.

The laboratory technician role has been filled by Kira Weishaupt and has alleviated some pressure, however, not enough.

4 Performance Measures and compliance

Potable Water

We provide continuous safe, high-quality drinking water to all our customers.

Performance Measure	2024 – 25 targets	Result 23-24
The extent to which the local authority's drinking water supply complies with table 1 of the Water Services (Drinking Water Standards for New Zealand) Regulations 2022 and the Drinking Water Quality Assurance Rules (a) Determinand – Escherichia coli (b) Determinand – Total Pathogenic Protozoa	Fully complies	Complies
Residents' satisfaction with the water quality provided by Council (Recorded through the Residents Survey).	≥90%	91%
The total number of complaints received by the local authority about any of the following: (a) drinking water clarity (b) drinking water taste (c) drinking water odour (d) drinking water pressure or flow (e) continuity of supply; and (f) the LA's response to any of these issues expressed per 1000 connections to the LA's networked reticulation system.	≤17	8.89

Adequate water supply available at all times, including in time of emergency.

Performance Measure	2024 – 25 targets	Result Last Month
Where the local authority (LA) attends a callout in response to a fault or unplanned interruption to its networked reticulation system, the following median response times measured:		
(a) attendance for urgent callouts: from the time the LA received notification to the time service personnel reach the site	≤ less than 1hr	0.60
(b) resolution of urgent callouts: from the time the LA received notification to the time that service personnel confirm resolution of the fault or interruption	≤ less than 4hrs	2.72
(c) attendance for non-urgent callouts: from the time that the LA receives notification to the time that service personnel reach the site; and	≤ less than 12hrs	4.32
(d) resolution of non-urgent callouts: from the time that the LA receives notification to the time that service personnel confirm resolution of the fault or interruption.	≤ less than 24 hrs	6.93
Total number of water leaks (expressed as No per 100km of mains, including service connections)	≤ 120	New Measure
Water Restriction Days (NEPM D-R19)	0	0

We manage the water supply system in a sustainable way that also caters for growth.

Performance Measure	2023 – 24 targets	Results 23 - 24
The percentage of real water loss from the local authority's networked reticulation system (including a description of the methodology used to calculate this). WaterNZ Benchloss	≤ Less than 25%	28.1%
Network Leakage index score (Infrastructure leakage index for whole district)(NEPM D-RE3)	< 3	New Measure
Median Residential Water Consumption (litres/connection/day)(NEPM D RE4)	≤ 600	New Measure
The average consumption of drinking water (litres/resident/day) within the territorial authority district	≤ 600	322
Residents in our District annually adopt water conservation techniques in their homes and/or businesses (Recorded through the Residents Survey).	≥65%	54%

Wastewater

In defined areas, Council will collect, treat, and dispose of wastewater through a reliable wastewater network which is managed to ensure blockages, breaks or spillages are kept to a minimum.

Performance Measure	2024 – 25 targets	Compliance
Compliance with Territorial Authority (TA) resource consents for discharge from its sewerage system measured by the number of: (a) abatement notices (b) infringement notices (c) enforcement orders, and (d) convictions received by the territorial authority in relation those resource consents.	1	One abatement notice issued by NRC due to Non-compliance at Hikurangi WWTP
The number of dry weather sewerage overflows from the TA's sewerage system, expressed per 1000 sewerage connections to that sewerage system.	≤1.35	On target
Residents' satisfaction with the wastewater network and treatment (Recorded through the Residents Survey).	>70%	
4.1.4 The total number of complaints received by the TA about any of the following: (a) sewage odour (b) sewerage system faults	≤20	On target

(c) sewerage system blockages; and
 (d) the TA's response to issues with its sewerage system expressed per 1000 connections to the TA's sewerage system.

4.1.5 Where the TA attends to sewerage overflows resulting from a blockage or other fault in the TA's sewerage system, the following median response times measured:

(a) attendance time: from the time that the TA receives notification to the time that service personnel reach the site; and	≤1 hr	Within the target Refer to contractor performance for more details
(b) resolution time: from the time that the TA receives notification to the time that service personnel confirm resolution of the blockage or other fault.	≤7 hr	On target

Stormwater and Flooding

Performance Measure	2024 – 25 target	Compliance
Compliance with the territorial authority's (TA) resource consents for discharge from its stormwater system, measured by the number of: (a) abatement notices (b) infringement notices (c) enforcement orders; and (d) convictions received by the TA in relation to those resource consents.	0	On target
Residents' satisfaction with stormwater drainage service (Recorded through the Residents Survey).	≥70%	On target
The number of complaints received by a TA about the performance of its stormwater system, expressed per 1000 properties connected to the TA's stormwater system. (c.)	≤16	On target
(a) The number of flooding events (a.) that occur in a TA district; and (b) for each flooding event (a.) the number of habitable floors affected (b.) expressed per 1000 properties connected to the TA's stormwater system.	0	On target

<i>Performance Measure</i>	<i>2024 – 25 target</i>	<i>Compliance</i>
The median response time to attend a flooding event, measured from the time that the TA receives notification to the time service personnel reach the site	≤1 hr	On target

Notes:

- A flooding event means an overflow of stormwater from a territorial authority's stormwater system that enters a habitable floor (Department of Internal Affairs, 2014). It does not therefore apply outside declared stormwater service areas, or to non-habitable structures such as garages and sheds, or to flooding of yards.
- While all flooding events will be recorded as per DIA requirements, the target is immunity from storm events with an annual exceedance probability (AEP) of more than 2% (one in 50 year ARI). This is consistent with District Plan rules for minimum floor level.
- This target expresses per 1000 properties rather than a total, which would have resulted in a target of 15.7 per 1000 properties. In 2017-18 Annual Plan this was expressed as per 400 properties across the District.

Council will provide a reliable and sustainable flood protection scheme, which is managed to mitigate flooding within the Hikurangi Swamp Scheme area to an acceptable level

<i>Performance Measure</i>	<i>2024 – 25 target</i>	<i>Compliance</i>
The major flood protection and control works that are maintained, repaired and renewed to the key standards defined in the local authority's relevant planning documents (such as its Activity Management Plan, Asset Management Plan, annual works programme or Long Term Plan).	Yes	On target
The number of infringement or abatement notices issued by Northland Regional Council in relation to the scheme consent.	0	On target

5 Capital Work (From December 2024 – January 2025)

Potable Water

Construction of treated water storage reservoirs at Three Mile Bush and Dip Road to improve the resilience of supply is now underway. The Whangarei Heads main replacement work is also underway, and the Poroti water main replacement work is being tendered. The Poroti Water Treatment Plant Upgrade project is on hold pending the outcome of working group discussions on the water take.

* RAG = Red / Amber / Green – **Red**, some issues to **Green**, going to plan

Major Projects	Current Phase	Estimated Construction Start Date	Estimated Completion Date	RAG Status
Three Mile Bush Reservoir	Construction	Jun-24	Apr-25	
<p>Construction works are underway. 75% construction completed on water mains, 75% on new reservoir site and 80% on new pump station on Dip Road.</p> <p>Consultant: Vecta, Contractor: Ventia NZ Operations.</p>				
Kamo Reservoir (Dip Road)	Construction	Aug-24	Oct-25	
<p>Construction underway and going well. The new “dump site has been blessed and the first ~1,200m3 soil has been moved and placed on the dump site. Piling is complete and the site will be levelled in January. Outline plan completed and approved.</p> <p>Consultant: Vecta, Contractor: Steve Bowling Contracting</p>				
Poroti Water Treatment Plant	On Hold	TBC	TBC	
<p>Detailed design draft complete. RAG status is RED as project team cannot progress project until Council direction is determined with regards to the water take (with Operations to resolve). A workshop (Te Karearea) has been held and Council have formed a Working Group to agree the long-term water take solution. Outside the project team, the Manager Water Services is working to address hapū and irrigation company concerns before lodging consent. Scope of CIA to be confirmed based on outcome of above.</p> <p>Consultant: Beca</p>				
Whangarei Heads Pipeline Replacement	Construction	Nov- 24	Jun-25	
<p>Construction works are complete for Portion 1. Portion 3 at the site for the slip on the Heads Road is due to commence in mid-January. Portion 2 around Solomons Point will follow in March after the busy summer season.</p> <p>Consultant: Hawthorne Geddes Engineers Contractor: Northern Pipe and Civil</p>				
Poroti main replacement	Deliver	TBC	TBC	
<p>Geotech investigation has been completed. Procurement Plan has been submitted for approval with the intent to tender out by end of November. A tender was advertised in December and is due to close in January.</p>				

Major Projects	Current Phase	Estimated Construction Start Date	Estimated Completion Date	RAG Status
Consultant: Hawthorn Geddes Engineers		Contractor: TBC		

Wastewater

Capacity increases is the current focus.

Major Projects	Current Phase	Estimated Construction Start Date	Estimated Completion Date	RAG Status
Whangārei WWTP New Admin Building	Analyse	2025	2026	
<p>Business Case has been complete and cost estimate updated. Concept drawing underway. Geo technical site survey complete, report underway. Scoping of services and equipment changes underway.</p> <p>Amber as Business Case needs to be reviewed and approved. Additional funding to be allowed for demolition of existing building and asbestos removal.</p>				
Whangārei WWTP Augmentation	Analyse	N/A	N/A	
<p>The augmentation works are on hold pending:</p> <p>WWTP consent conditions</p> <p>Available budget – it was withdrawn from LTP.</p> <p>LWDW and Taumata Arowai discharge standards – when these are finally made known to us.</p>				
Whangārei WWTP Odour Control	Construction	Mar-23	Sep-25	
<p>Construction underway and going well. Completion expected in September 2025.</p> <p>Consultant: Beca Contractor: United Civil</p>				
WW Emergency Overflow Tank – Parua Bay	On Hold	TBA	TBA	
<p>The project is to construct a larger tank to reduce the frequency and volume of spills. During design it was discovered that an adjacent manhole was lower level than the tank, hence the source of spills. Having fixed the level of the manhole, it is apparent that the flows coming into the tank are higher than was known and the tank spills more often than expected. Further modelling investigation is underway, once complete the project will be rescoped. Budget has been removed from current LTP – decision required whether to cancel this project.</p> <p>Outside of this project actions are being taken by the Operations team on sewer overflows.</p> <p>Consultant: Mott MacDonald</p>				
WW Rising Main Renewal Kioreroa Road	Construction	Feb-24	Feb-25	
<p>Construction is going well and programmed for completion Feb-25.</p> <p>Consultant: Hoskin Civil; Contractor: United Civil Construction.</p>				

Major Projects	Current Phase	Estimated Construction Start Date	Estimated Completion Date	RAG Status
Hikurangi WWTP – Modular Plant & Inlet Screen	Construction	Early 21	Jan-25	
<p>To further improve the quality of treated wastewater, a clarifier will be built near the existing wetland. This will help us meet the consent conditions by reducing Total Suspended Solids (TSS) in the effluent.</p> <p>Northern Drainage will begin construction in the last week of January 2025. The project involves removing existing sludge from the storage area, temporarily storing the sludge in a bund before it's disposed of on nearby farmland. The project is expected to take about 5 weeks.</p> <p>Once the clarifier is operational, anolyte solution will be added to both the aeration pond and the clarifier to further enhance treatment.</p> <p>Consultant: Aquaero</p>				
Sewer Capacity Increase Growth Areas	Business Case		Jun-26	
<p>Updating of network model ongoing. RAG Amber as we need to accelerate this work. Status unchanged.</p>				
Tutukaka Dump Station	Business Case	Oct 24	Jun-25	
<p>Two preliminary options (Ngunguru sports reserve entrance and Tutukaka commercial area car park) were identified with the preferred option being the Tutukaka commercial area. This option was presented to key stakeholders during a community discussion event in December. The response to the preferred option was unfavourable.</p> <p>Staff are currently investigating an alternative site with the intention of having a site operational by the end of the financial year. Due to public health and community concerns, we closed the existing dump station outside Ngunguru Primary School before the time school re-opens.</p>				
Kepa Road	Construction	Sep 24	Apr 25	
<p>Contractor confirmed that there was one Health and Safety incident to report (Minor incident). Contractor is currently dewatering groundwater and installing a deep manhole in the scaffolding yard off Kepa Road.</p> <p>Key milestones:</p> <ul style="list-style-type: none"> • The Mokohinau Road manhole (MH KEPAR0003SMA) was installed before the Christmas shutdown period. This reduced bypass pumping requirements for this site. • The 450mm OD HDPE wastewater pipeline via Horizontal Directional Drilling (approximately 240m) was successfully installed. • An abandoned pumpstation chamber was encountered at depth in the alignment and was removed as a variation to construction work. • On track for completing the construction activities mid-April 2025 <p>Consultant: JAS Civil; Contractor: TDG</p>				

Consenting Projects - Wastewater	Current Phase	Estimated Construction Start Date	Estimated Completion Date	RAG Status
Whangārei WW Network Discharge Consents	Deliver	N/A	Jun-25	
<p>Network discharge consents (NDC) covering the wastewater pump stations and piped reticulation network for the WDC's Whangārei Wastewater Scheme including the Whangārei Heads network (excludes the Whangārei Wastewater Treatment Plant) as required by the NRC's Proposed Regional Plan for Northland.</p> <p>The Whangārei Wastewater network model (separate project) which will help to quantify the extent of the wet weather overflows, and to inform the assessment of environmental effects required to support the NDC consent application is being updated and validated.</p> <p>Specialist consultants to undertake the necessary ecological and public health risk assessments to inform the assessments of environmental effects required to support the consent applications have been engaged.</p> <p>Consultant: Mott MacDonald</p>				
Portland WWTP Resource Consent Renewal	Deliver	N/A	Dec-24	
<p>NRC have issued a new resource consent for Portland WWTP with a 30-year period. A wetland enhancement plan (WEP) was added as a condition of this consent and Te Parawhau Hapu will be invited to provide input to the design of the WEP. The Operations team is required to complete the WEP within three years of the date the consent was issued.</p> <p>Consultant: Beca</p>				
Tutukākā WWTP Resource Consent Renewal	Deliver	N/A	Dec-24	
<p>NRC have issued a resource consent for Tutukaka WWTP with a 30-year period. A wetland enhancement plan (WEP) was added as a condition of this consent and the Operations team will work with the Kaitiaki Advisory Rōpū Hapu to finalise the WEP which must be prepared within six months of the consent being issued. The upgrade of the wetland must be completed by December 2027.</p> <p>Consultant: Beca</p>				
Oakura/Hikurangi WWTP Resource Consent Renewal	Deliver	N/A	Mid-25	
<p>Existing NRC consents authorising the discharge of treated effluent for the Oakura and Hikurangi wastewater treatment plants are due to expire on the 31 May 2025 and 30 June 2025 respectively (note that Council may continue to operate under the existing consents until the new consents have been granted and all appeals, if any, are determined).</p> <p>GHD has been working with the Operations team regarding a Sampling Plan to understand and assess the effects of wastewater discharges on its overall water quality. An intensive sampling period is scheduled from 27th Jan to 14th March 2025.</p> <p>Consultant: GHD</p>				

Stormwater and Flooding

Major Projects	Current Phase	Estimated Construction Start Date	Estimated Completion Date	RAG Status
Morningside Flood relief upgrade	Detail Design, procurement	Jan -24	Jun-25	
<p>Pumps ordered; delivery expected March 2025 (21 weeks). Civil construction contract awarded to United Civil Contracting. Construction has started. The cofounding agreement required completion prior to the end of the financial year.</p> <p>Consultant: Weir consultants Contractor: United Civil Construction Ltd</p>				
Sorrento St Stormwater Pipe Upgrade	Construction	Apr-24	Oct-24	
<p>Construction is complete, including snag list items. A second chip seal coat is due in one year, this is standard practice.</p> <p>Consultant: Beca Contractor: United Civil Construction</p>				
Citywide stormwater consent	Consenting	N/A	Jun 25	
<p>ITA audits are complete and provided to NRC on 05/12/2024. Received informal s92 queries from NRC. GHD is preparing a formal response to the raised queries. Exploring opportunities to re-introduce stormwater maintenance activities in the application.</p> <p>Consultant: GHD / Hoskin Civil</p>				
Hikurangi Repo Flood Scheme – Business Case	Analyse	May-23	Apr25	
<p>Modelling complete. Ag-First has revised alternative land use options and cost/benefits</p>				
Mair Street to Rurumoki Street Stormwater Renewal	Deliver - Design	Jun-24	Sept-24	
<p>Design completed by Metis Consultants, who are also preparing the tender documents.</p> <p>Consultant: Metis Consultants</p>				
Whangarei Urban Flood Strategy	Strategic case	N/A	Nov 2026	
<p>Development of the Strategic Case is underway. Consultants from Urban Intelligence Ltd have been engaged to perform a First-pass Risk Assessment.</p> <p>Stage 1 ROI evaluation for the technical assessment is completed, resulting in the shortlisting of 3 suppliers. Efforts are now focussed on preparing the RFP documentation for Stage 2.</p> <p>Consultant: Adapterra Ltd / Coastal Management Collective Ltd / Urban Intelligence Ltd</p>				

Major Projects	Current Phase	Estimated Construction Start Date	Estimated Completion Date	RAG Status
Northern Growth Flood Resilience SW Attenuation	Analyse	2026	2028	
<p>Project plan under development. Meeting held with Pehaweri marae representatives.</p> <p>Preparing Procurement strategy to allow for professional services procurement in February and March. Consenting and land acquisition planned for 25/26 FY, construction planned for 26/27 FY.</p>				

Blue Green Network Programme	Current Phase	Estimated Construction Start Date	Estimated Completion Date	RAG Status
Raumanga Stream Restoration	Deliver	Feb-24	Jul-27	
<p>Flood mitigation and environmental restoration. Weeding and revegetation on section from Bernard St footbridge upstream to SH1 in Otaika. Work is to be staged over time and includes establishment period for planting. Optioneering for engineered solutions underway for areas with high risk of stream bed and bank instability. Hapū engaged early and ongoing. Initial areas of work will be the path-side of the stream, and non-path side between SH1 and the reserve. A large area has been weeded and close to 3,000 plants were planted in July. Additional work to stabilise erosion underneath the Raumanga Shared path is being investigated and design options are developed TBC soon.</p> <p>Contractor/Consultant: Wildlands Consultants / Zealandia</p>				

5.1 Project details – Specific projects

Fluoridation Programme

As directed by the Director General of Health this fluoridation programme involves the installation of fluoride dosing equipment to meet deadlines between July 2024 and 2026. Application to extend the directive date for Whau Valley, Ruddells, Ruakaka and Ahuroa Water Treatment Plants to the end of March 2025 has been approved by the Director General of Health. To be certain we can comply with this timeframe fluoride would need to be added to water supplies from end of February 2025. As Council have voted not to Fluoridate staff are tidying up the works and leaving the equipment in a state that it can be activated at short notice if needed.

Fluoridation Programme	Current Phase	Estimated Construction Start Date	Estimated Completion Date	RAG Status
Whau Valley Water Treatment Plant	Deliver	Jul-24	Mar-25	
Construction Phase: 100% completed. Dry commissioning completed. Consultant: Beca Contractor: Bellcon Ltd				
Ruddell's Water Treatment Plant	Deliver	Dec-23	Mar-25	
Construction Phase: 100% completed. Dry commissioning completed. Consultant: Beca Contractor: Bellcon Ltd				
Bream Bay Water Treatment Plants	Deliver	Feb-23	Mar-25	
Construction Phase: 100% completed. Dry commissioning Completed. Consultant: Beca Contractor: Bellcon Ltd				
Poroti Water Treatment Plant	Analyse	End-24	Jul-26	
Due to significant delays with the major treatment plant upgrade works (see separate project above), a separate alternative fluoridation design and construction programme is being planned in order to meet the Ministry of Health (MoH) deadline for the existing treatment plant. The first of two applications for funding has been made to the MoH to cover the cost of the work. We have yet to get confirmation from the MoH regarding the funding application. If the application is unsuccessful the \$1.5million estimated cost will need to be funded by Council.				

Ruakaka Wastewater Treatment Plant

Ruakākā WWTP Upgrade	Analyse	Mid-26	2029-30	
Procurement Strategy and Procurement Plans for Ocean Outfall and Wastewater Treatment Plant Professional Services have been approved and out for tender-on-tender link closing Jan 2025. Evaluation to be completed by early Feb 2025 and awards expected by late Mar 2025. Preliminary investigation works have commenced to verify and validate alternative discharge area's including areas to cater for increasing capacity in the interim until construction is complete. This is expected to be completed Apr 2025 Design Consultant: TBC.				

Community Infrastructure

Monthly Report

November - December 2024

Community Infrastructure – Monthly Report

Reporting Officer: Jim Sephton (General Manager - Infrastructure)

Meeting Date: 13 February 2025

Contents

1	Executive Summary	3
2	Health and Safety	4
3	Customer requests and feedback	6
4	Performance	8
4.1	Performance Measures	8
4.2	Network Performance	9
4.3	Key activities in the last period	10
4.4	Contractor Performance	13
5	Significant Risks & Issues	14
6	Capital Work	15

1 Executive Summary

This report covers the Operational and Capital works for the months of November and December 2024.

Parks & Recreation

Rough sleepers, homeless and Permanent Vehicle Dwellers (PVD's) on parks land continue to occupy officers time and take the team away from more constructive work. Hotspots include

- Blue Goose: After a yearlong effort working with multiple agencies the long term residents at Blue Goose were found alternative accommodation and moved to their new lodgings just before Christmas. A PVD remains on site and will be addressed when resources are available.
- Parua Bay: Tent community of approx. 12 tents set up camp and beginning to show signs of unruly and disruptive behaviours
- Beach Road, Onerahi: ongoing disturbances of residents by PVD's and people congregating on coastal esplanade. Parks staff working with community to install signage and bollards restricting access to grassed areas. There is little else the Parks team to do to manage behaviour given this is a public road
- Tikipunga sports Park: Rough sleepers moved back into area previously cleared. They are beginning to cause issues for the community and safety concerns are becoming prevalent requiring action in the new year.
- Cobham Oval: parking restrictions now in place and all PVD's now vacated
- Old Boys: Small community of tent dwellers not causing any concerns and well behaved
- Tikipunga Library: Reserve next to library has a tent dweller. Neighbour concerned and complaining to Council however Parks Manager assessed the situation against Council framework and no action to be taken at this time.

Vandalism, theft and motorbikes are a constant problem with considerable time and money spent replacing stolen playground equipment and graffiti removal on parks property.

Planning project updates:

- Wider community and stakeholder consultation on Reserve Management Plans completed. Hapu consultation in conjunction with Maori Outcomes to take place in February 2025
- Watersports hub feasibility study consultation underway with feedback deadline end January 2025
- Encroachment policy draft completed. Report to Council planned for March 2025
- Sports hub land options assessment completed and to be presented to Council Workshop in early 2025

Waste management and minimisation

We have secured a Waste Management & Minimisation Manager however they may not be able to start until April. Until then the parks team continue to hold the fort.

The new consent for Pohe Island landfill remediation submitted. Issues with site slumping and leachate have been identified through this process which will require addressing in 2025.

No major issues with waste collection over Christmas and new years period

2 Health and Safety

Statistics for the Infrastructure Community Group November 2024

<i>Type of incident</i>	<i>Employee reported incidents</i>	<i>Contractor reported incidents</i>	<i>Member of the public reported incidents in our workplaces</i>	<i>Totals</i>
WorkSafe notifiable incident	0	0	0	0
Lost time injury (LTI)	0	0	0	0
Medical treatment injury (MTI)	2	0	1	3
Minor injury	0	4	0	4
Pain and discomfort report	0	1	0	1
Stress and fatigue	0	0	0	0
Incident – Occupational health exposure	0	0	0	0
Near miss incidents	0	10	0	10
Incident – non work medical condition affecting the worker or person	0	0	0	0
New hazards reported	0	2	0	2
Safety observations	2	0	0	2
Success celebrated	0	1	0	1
Totals	4	18	1	23

Member of public incidents

There was an incident involving a member of the public during this November period where they reported that their child had likely become ill due to e-coli contamination in the water from the fountain at Putahi Park. This was covered at the time at the December Risk and Audit Committee meeting. Several actions were put in place subsequently and follow up contact made with the family.

Statistics for the Infrastructure Community Group December 2024

<i>Type of incident</i>	<i>Employee reported incidents</i>	<i>Contractor reported incidents</i>	<i>Member of the public reported incidents in our workplaces</i>	<i>Totals</i>
WorkSafe notifiable incident	0	0	0	0
Lost time injury (LTI)	0	0	0	0
Medical treatment injury (MTI)	0	0	0	0
Minor injury	0	2	0	2
Pain and discomfort report	0	0	0	0
Stress and fatigue	0	0	0	0

Incident – Occupational health exposure	0	0	0	0
Near miss incidents	2	13	0	15
Incident – non work medical condition affecting the worker or person	0	0	0	0
New hazards reported	3	0	0	3
Safety observations	0	0	0	0
Success celebrated	0	0	0	0
Totals	5	15	0	20

Botanica

An incident involving the discovery of friable asbestos in the Botanica boiler room, following a scheduled asbestos survey was managed throughout December with full reinstatement of normal operations on Boxing Day. This is not shown in above statistics as it was reported into the system by the H&S team.

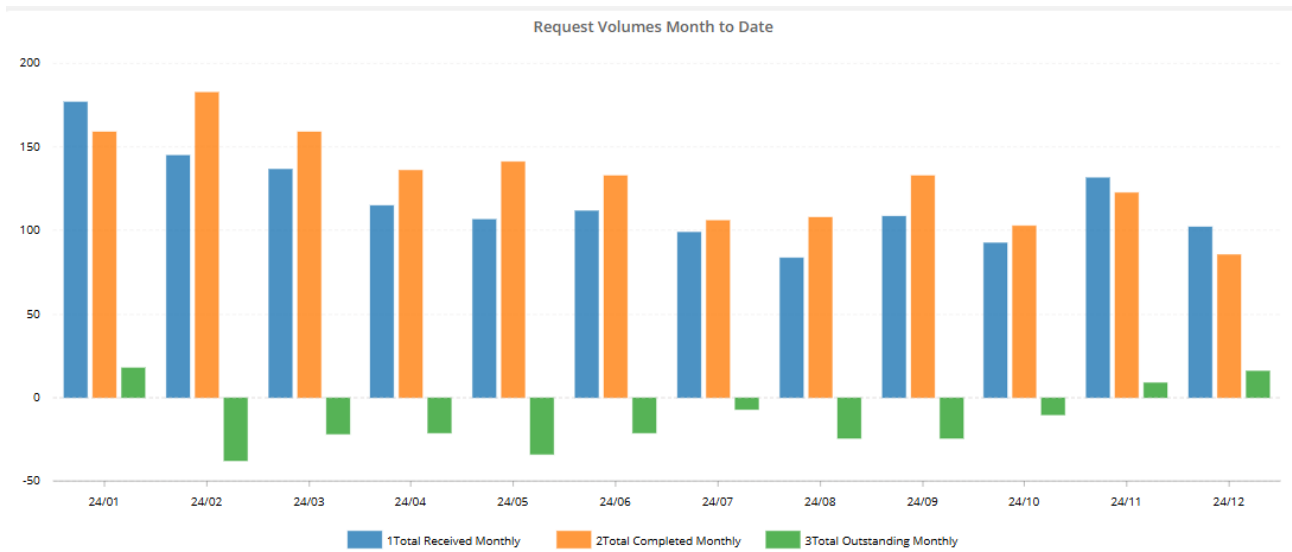
Physical inspections

There is an internal requirement for physical health and safety inspections of sites to be undertaken monthly. The only inspections being reported will be those available from our H&S system as these are easily locatable. Other inspections may have been undertaken but they are difficult to readily locate.

Type of monitoring	Community Projects		Parks	Solid Waste		Infrastructure development
	November	December	November and December	November and December	November and December	
HS016 – Full site inspection	2	1	0	0	0	
HS102 – Be safe engagement	2	4	0	0	0	
HS030 – Site spot check	0	0	0	0	0	
HS140 – TTMP site	0	0	0	0	0	
Totals	4	5	0	0	0	

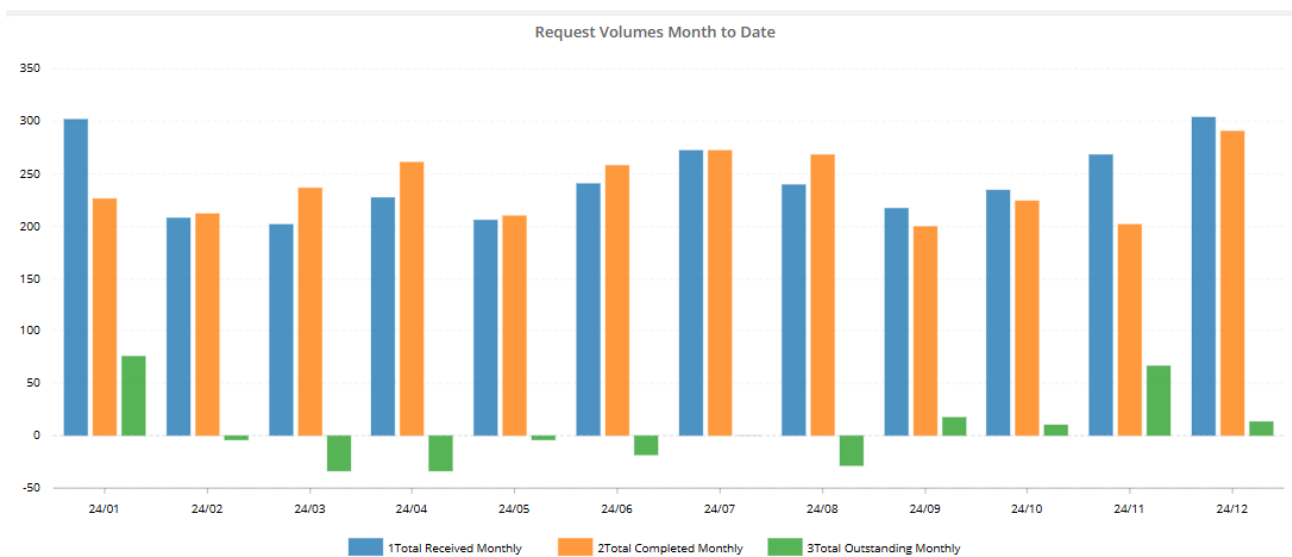
3 Customer requests and feedback

Parks and Recreation



The team have continued to reduce outstanding requests.

Waste Management and Minimisation



The contractor had a number of sick and injured staff in November and December. As new staff and replacement staff were learning the ropes there was a spike in requests complaining about collection services. This has been addressed with the contractor and we anticipate request numbers reducing in early 2025

Graffiti



We are seeing an increase in graffiti activity in the district. Most recently a number of public art works were defaced requiring the contracting of a local artist to do necessary remediation work as it is beyond Council contractors skills and capability. This increases the cost of graffiti management.

4 Performance

4.1 Performance Measures

Council will provide and maintain recreational facilities to support and promote active recreation of the community through participation in both organised and informal recreational activities aligned with Active Recreation and Sports Strategy.

Performance Measure	2023 – 24 target	Compliance
Sportsparks will be provided to meet the community's needs by providing minimum hours available at a sportspark per 10,000 people during the winter season.	≥180hrs	160 hrs
Percentage annual increase in community participation in active recreation and sports activities (Recorded through the Residents Survey)	≥1%	2023-2024 Not measured

Council will provide and maintain a range of parks, reserves and playgrounds to meet the needs of the community as well as protecting and enhancing the natural environment.

Performance Measure	2023 – 24 target	Compliance
Residents' satisfaction with the range and quality of public spaces, including parks, playgrounds and reserves. (Recorded through the Residents Survey.)	≥90%	2023-24 80%
Residents have adequate access to local recreational opportunities.	0.9Ha/ 1000 people	0.933

Council will provide and maintain cemeteries and a crematorium in a satisfactory manner.

Performance Measure	2023 – 24 target	Compliance
Residents' satisfaction with cemeteries. (Recorded through the Residents Survey).	≥90%	2023-24 86%

Council will provide well maintained and accessible public toilets in high use areas.

Performance Measure	2023 – 24 target	Compliance
Residents' satisfaction with public toilets (Recorded through the Residents Survey).	≥75%	2023-24 66%

4.2 Network Performance

Over the last year we have made significant progress through the appointment of a Contractor to oversee maintenance works. However there remains a large backlog of work in the Coastal Activity and work is being undertaken to quantify this so that appropriate budgets and resourcing can be applied in future Long Term Plans.

In the cemetery area we have identified an impending lack of capacity. A request to bring forward funds will be brought to Council.

No issues of significance across Parks, Gardens, Walkways and Tracks.

4.3 Key activities in the last period

Public Tree Maintenance

Tree contractors are progressing the backlog of requests as they become Northpower accredited.

Scheduled maintenance of street trees on track.

Walking Tracks

Hapu have supported the planned remediation of Drummond Track and works are anticipated to commence in March 2025.

Coastal Structures

All main boat ramps were steam cleaned before the Christmas period. Lots of positive feedback on the steam cleaning with it being less abrasive than water blasting and producing good results.

Maintenance is slowing down as we have nearly exhausted the 2024/25 budget addressing the backlog of maintenance issues. With no Coastal Officer position in Council, Parks were required to spend maintenance budget contracting a Coastal Officer position to ensure high risk and high priority maintenance repairs were undertaken

Assets worked on:

- Ruakaka Beach access way.
- Albany sea wall made safe with fencing.
- Town basin step repairs.
- Stuart Rd gangway replaced on to tracks.

Asset Renewals in progress

- Albany Rd, One Tree Point – Boat ramp renewal
- Albany Rd – Sea wall replacement

Albany Rd Sea Wall update – The Sea wall has been surveyed, and we are waiting concept drawings for local resident for feedback. The intention is to replace the timber sea wall with rock revetment due to budget and maintenance advantages. There have been objections to this approach which need to be recognised.

Albany Rd Boat Ramp Renewal:

The project went well with the old ramp removed and the new one laid the week before Christmas.

A few locals that live down Albany Rd want ramps built off the side for beach access and a few other alterations, but as the renewal was done as maintenance it had to be like for like or a Resource Consent would have been required.

Before:



New Ramp:



Sports Parks

Gemma Aspden our Sports Development Officer has resigned and will finish with Council on the 23rd January 2025. Gemma leaves us to take up a position as Commercial Manager at Sport Northland. We thank Gemma for the work she has done progressing the Districts Sports Strategy.

Summer renovations are underway on our sand-based fields. Budget constraints mean soil fields will not be renovated this year and we need to consider budget allocation alongside fees and charges in this space.

Cemetery

Maunu cemetery has approximately 18 months of capacity for burials remaining. A report to Council, requesting budget be brought forward budget from year 9 and 10 of the LTP to Year 2 to allow development of new parts of the cemetery, will be submitted in early 2025.

Parks and Gardens

In general parks and gardens activities progressing as expected. Regular meeting with the contractor taking place to ensure areas of improvement are addressed. New hanging baskets installed.

Playgrounds

Planning for the renewal of the Beach Road playground underway. Design has been selected by local children and installation planned for early 2025. The retired playground equipment has been donated to a local school for repurposing.

A number of pieces of play equipment have been stolen in recent months causing frustration and cost.

4.4 Contractor Performance

Contract	Supplier	Performance	Comment
Public tree maintenance	Treescape	Good	Continuing to make progress on requests backlog as well as meeting contract requirements
Tracks and Walkways	Northland Park Care	Excellent	Maintenance of tracks and walkways is excellent.
Coastal Structures	Dean Hawkins	Excellent	Dean Hawkins was contracted to manage coastal assets repairs and maintenance. He has made great progress.
Playground and skatepark maintenance	Northland Park Care	Good	In general the playgrounds are looking good.
Parks & Gardens	City Care Ltd	Good	Maintenance under control.
Sportsground maintenance	Green by Nature	Good	Have the summer renovation programme commenced
Pest Plant	Recreational Services	Excellent	Good knowledgeable team that efficiently carry out good quality work.

5 Significant Risks & Issues

Risk / Issue	Mitigation	Comment
Homeless on parks. Police reluctant to support Council trespass notices	Manage within Council adopted framework Meet with Police on high risk areas/situations	Homeless continues to be a challenge Parks is dealing with as many homeless are on parks land.
Motorbikes on Parks	Consider a public campaign for the public to photograph, record motorbikes on parks land.	There is very little Parks can do to prevent motorbikes being ridden on public spaces as prevention devices also prevent wheelchairs prams etc from accessing spaces. A public campaign can be considered however this does come at risk to the public as often the motorbike riders are aggressive and threatening if observed.
Whangarei Aquatic Centre Ownership	Working group established to consider ownership options	
Community encroachment of esplanade reserves	Develop an encroachment policy	Policy drafted and to be presented to Council for adoption in March 2025
Parks budget inadequate to maintain facilities	Prioritise work programme to meet budget	Soil based sports fields will not be renovated in 2024/25. In general Parks budgets insufficient to deal with unforeseen issues. H&S needs to be prioritised.

6 Capital Work

Delivery of Capital Programme

Generally on track to deliver this years budget although timeframes are tight and dependent on awarding contracts in January/February.

There is a risk that there are insufficient projects in the EM Community Fund. To address this we have brought forward the two toilet projects and these will be procured together. Also looking to include Hikurangi Footpath – subject to Council confirmation.

Project Progress

Ngunguru Seawall now confirmed for February start date. Detailed Planning with Hapu and Contractor for commencement underway which will be followed by community information.

Business Case for Tikipunga Sportsfield completed and looking to bring this forward.

Procurement of the three toilets has commenced with the production of the toilet units. This will be followed by installation once sites are confirmed.

Project Name	Dept./ Activity	RAG Status	RAG Exception	Current Stage	Stage % Complete	Expected Construction Start	Expected Construction Completion	Progress last month
Tikipunga Sport Field Upgrade (artificial turf)	Parks			2 Analyse	90%	TBC	TBC	Business Case completed. Awaiting approval before progressing to Plan Stage
New Ruakaka Cemetery	Parks			2 Analyse	25%	TBC	TBC	
Whangarei Falls viewing platform renewal	Parks			2 Analyse	25%	TBC	TBC	
Marine Hub	Parks			2 Analyse	25%	TBC	TBC	
Manue Cemetery Extension	Parks			2 Analyse	25%	TBC	TBC	
Parua Bay Toilets	Parks			2 Analyse	75%	TBC	TBC	
Mangatapere Toilets	Parks			2 Analyse	75%	TBC	TBC	
Pipiwai Toilets	Parks			2 Analyse	75%	TBC	TBC	
Onerahi Domain Sports Park Field Lighting	Parks			3 - Plan	25%	TBC	TBC	
Pohe Island Spine Path	Parks			4 - Deliver - Design	30%	Sep-25	Jun-26	
Morningside Sports Park Drainage	Parks			4 - Deliver - Design	100%			
Matapouri Toilet No. 2	Parks		The current budget does not reflect TIF income. To be resolved with finance/Council	4 - Deliver - Design	50%	TBC	TBC	Design in progress
Quarry Gardens Slip Management	Parks			4 - Deliver - Design	50%	TBC	TBC	New PM apointed to move project forward

Otangarei Fishbone Sports Park Field Lighting	Parks			4 - Deliver - Design		TBC	TBC	
Oakura Sport Field & Wetland Upgrade	Parks			4 - Deliver - Design	10%			
Lower Wiarohia Loop	Parks		Need to finalise design whilst acknowledging multiple Hapu interest	4 - Deliver - Design	50%	TBC	TBC	
Albany Road Seawall	Coastal			4 - Deliver - Design	50%	TBC	TBC	
Portland Sports Park Drainage	Parks			5 - Deliver - Construction	1000%	Feb-25	Apr-25	Tenders received.
Wharf Road Wharf	Coastal			5 - Deliver - Construction	50%	Mar-25	Jun-25	Materials ordered
Parua Bay Skate Park	Parks		Awaiting consent approval	5 - Deliver - Construction	50%	Mar-25	Aug-25	Expecting consent and preparing Procurement Plan for construction
Ngunguru Seawall	Coastal		Extent of seawall to be confirmed	5 - Deliver - Construction	0%	Feb-25	Jun-25	Cultural Induction and Monitoring being confirmed.
Cafler Park Amphitheatre	Parks			5 - Deliver - Construction	85%	Sep-24	Jan-25	
Raumanga Reserve	Parks			5 - Deliver - Construction	90%			
Onerahi Sport Field	Parks			6 - Close	95%			
Parua Bay Sports Field	Parks			6 - Close	50%			

Error! Reference source not found.

Ruakaka 2x New Sports Fields	Parks		6 - Close	90%			
Cafler Park Boardwalk	Parks		6 - Close	100%			
Quarry Gardens Carpark Stage 2	Parks		6 - Close	95%			

Transportation

Monthly Report

December – January 2024

Transport and Community Infrastructure – Monthly Report

Reporting Officer: Jim Sephton (General Manager - Infrastructure)

Meeting Date: 13 February 2025

Contents

1	Executive Summary	3
2	Health and Safety	4
3	Customer requests and feedback	6
4	Performance	11
4.1	Performance Measures	11
4.2	Key Activities	12
4.3	Contractor Performance	31
5	Significant Risks and issues	32
6	Capital Work	33

1 *Executive Summary*

This report covers the operational and capital works for the months of November and December 2024.

Key activities included continuation of pre-seal repairs and resurfacing works.

A total of 1813 dispatches (individual works items) were completed across the network between 30 November and 31 December 2024. Works delivered across 671 out of 1564 local roads giving 43% network coverage for December.

The team are continuing a focus on quality. 67 work items audited in December including 65 ordered works (of which 93.85% passed) and 2 routine works items (both passed).

Final development of annual works programmes are now being completed as final budgets were approved by Council in November.

Rose Street Bus Hub project is underway with a tight programme to complete before the end of June. Efforts to minimise disruption to bus and car park users are in place.

Pilot T2 Lane on Bank Street being implemented. Issues with lining and parking allocations are being addressed.

2 Health and Safety

Statistics for the Transportation Department - November 2024

<i>Type of incident</i>	<i>Employee reported incidents</i>	<i>Contractor reported incidents</i>	<i>Member of the public reported incidents in our workplaces</i>	<i>Totals</i>
WorkSafe notifiable incident	0	0	0	0
Lost time injury (LTI)	0	0	0	0
Medical treatment injury (MTI)	0	1	0	1
Minor injury	0	1	0	1
Pain and discomfort report	0	0	0	0
Stress and fatigue	0	0	0	0
Incident – Occupational health exposure	0	0	0	0
Near miss incidents	5	8	0	13
Incident – non work medical condition affecting the worker or person	0	0	0	0
New hazards reported	1	9	0	10
Safety observations	0	3	0	3
Success celebrated	0	0	0	0
Totals	6	22	0	28

Employee incidents

All five employee reported incidents related to contractor worksites.

Statistics for the Transportation Department - December 2024

<i>Type of incident</i>	<i>Employee reported incidents</i>	<i>Contractor reported incidents</i>	<i>Member of the public reported incidents in our workplaces</i>	<i>Totals</i>
WorkSafe notifiable incident	0	0	0	0
Lost time injury (LTI)	0	0	0	0
Medical treatment injury (MTI)	1	0	0	1
Minor injury	0	0	0	0
Pain and discomfort report	2	0	0	2
Stress and fatigue	0	0	0	0
Incident – Occupational health exposure	0	0	0	0
Near miss incidents	1	7	0	8

Incident – non work medical condition affecting the worker or person	0	0	0	0
New hazards reported	0	0	0	0
Safety observations	1	1	0	2
Success celebrated	0	0	0	0
Totals	5	8	0	13

Physical inspections

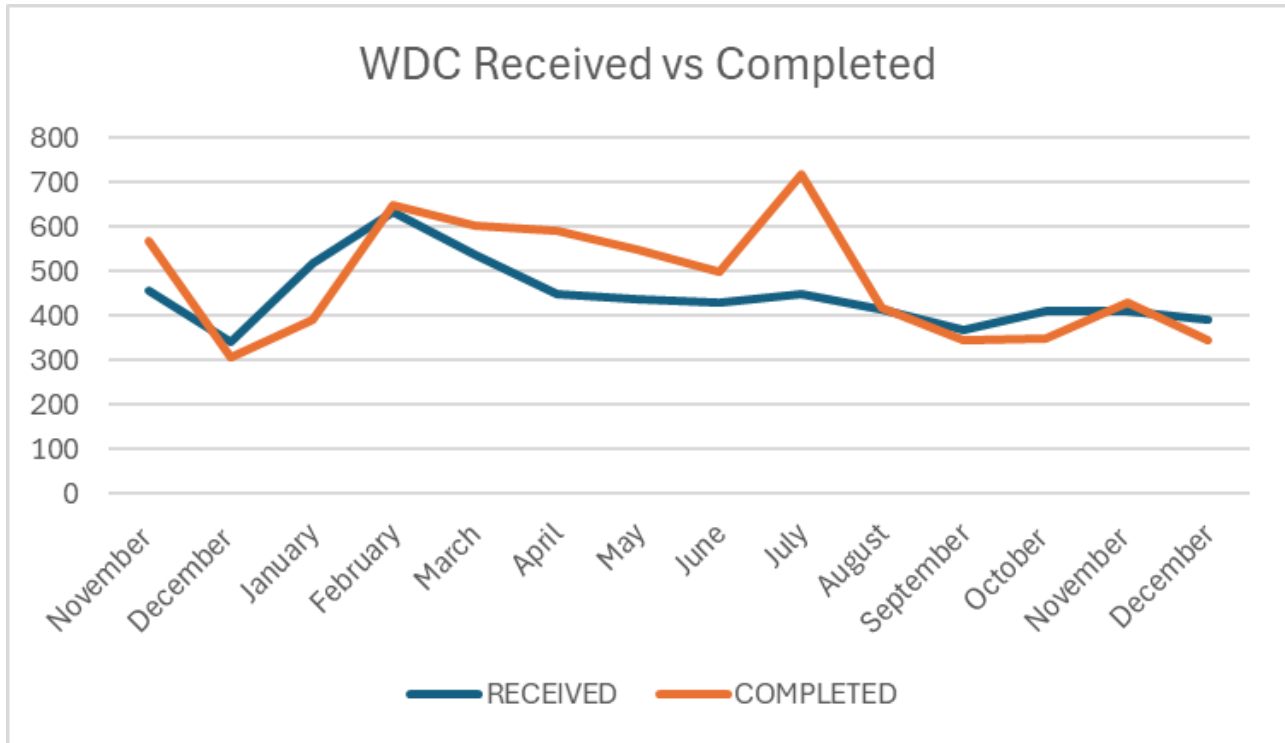
There is an internal requirement for physical health and safety inspections of sites to be undertaken at least monthly. The only inspections being reported will be those available from our H&S system as these are easily locatable. Other inspections may have been undertaken, but they are difficult to readily locate.

Type of monitoring	November	December
HS016 – Full site inspection	0	0
HS102 – Be safe engagement	0	0
HS030 – Site spot check	0	0
HS140 – TTMP site	4	2
Totals	4	2

Contractor on site monitoring undertaken by Transportation staff

3 Customer requests and feedback

In November 2024, the Transportation Team received 410 requests, our contractors and staff closed off 432 requests. In December 2024, the Transportation team received 390 requests, and our contractors and staff closed off 346 requests



Top Request Types – November 2024		December 2024
Request Type	Number of Requests	Number of Requests
General Roding	102	89
Road surface damage and maintenance	128	109
Footpaths and shared path maintenance	21	15
Road lighting and other electronic systems	19	12
Road Structures damage and maintenance	19	29
Clear blocked drains and culverts	12	9

Compliments Received

CC241273 - Crane Road – Fulton Hogan

Good morning, I would like to comment on the outstanding job that the Roadside mower contractor has completed in Crane Road, Kauri. They have done an amazing job mowing the side verge, ensuring all the long grass and weeds etc are trimmed short way back off the road. Also trimming the overhanging trees improving visibility, especially around corners. Hopefully, this gets to the contract as neighbours have also commented on what an excellent tidy job they have done.

CC241279 - Matarau Road – Fulton Hogan
 Customer is very pleased with the roadside mowing in the Matarau area.

CS249206 – Snooks Road – Downers
 Some feedback that was sent to me from a friend in the Maungakaramea Community: "Kudos to the people who worked on Snooks roadworks...beautiful smooth job."

CC241284 - Ormiston Road - Downers
 Customer called to advise that the crew that worked on Ormiston Road yesterday did a fantastic job especially regarding the entrance area around his

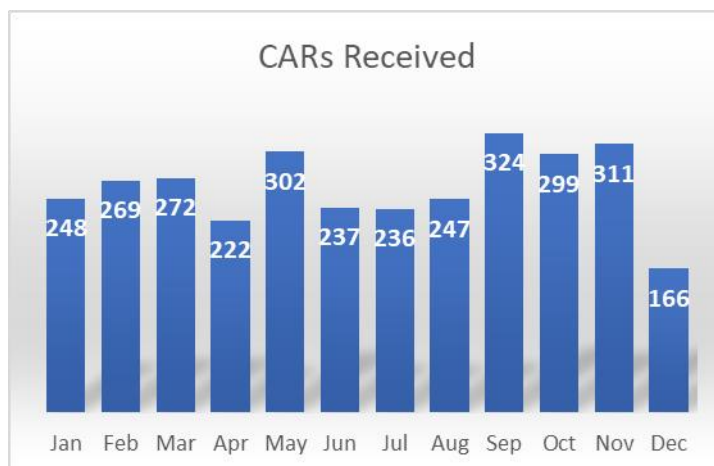
CC241308 - Takahiwi Road – Downers
 Hello. This week Monday evening 7pm a large branch fell onto the road across the street and blocked half the road. I tried to move it as it was going to cause an accident. I called the emergency help line and talked to a very helpful man who assured me it will be sorted. Within 1 hour a downer ute pulled up outside of which a lady got out, fitted her PPE got a sabre saw from her Ute and cut it all up on her own. So efficient and fast, now I don't mind paying my rates. Good effort team council.

CC241315 – Boeing Road – Downers RDG
 Customer wanted to say thank you to the team for their work on WT249528. The repair was well done and also quick.

Corridor Access Requests (CARs)

CAR Applications Received

- Dec saw a decline in applications due to Christmas shutdown
 - 208 CARs were processed in Nov and 116 in Dec
- Reduction in Northpower & Downer Roding CARs
 - Various liaison meetings to streamline low risk activities
 - ♣ Northpower 90 CARs in Oct v 56 Nov
 - ♣ Downer 60 CARs in Oct v 37 Nov
 - Work still to be done in this space



Assurance Checks

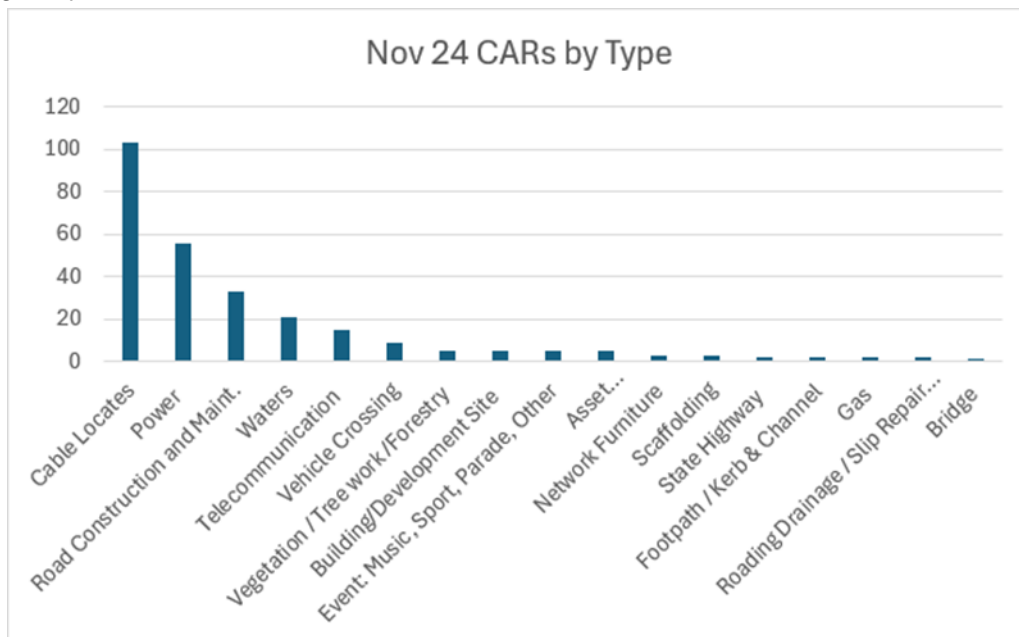
- Four assurance checks completed in Nov and six in Dec
 - Four sites were appropriate, the other excessive / unnecessary TTM
 - ♣ A challenge to change ingrained CoPTTM mindsets
- Focus in 2025 is reducing unnecessary TTM

Road Closures

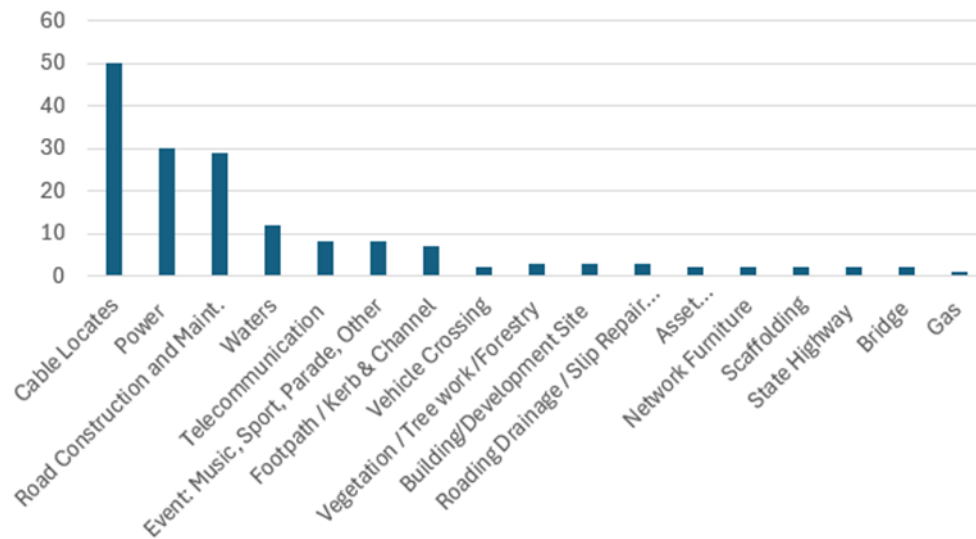


CAR Applications by Type

- Focus remains on reducing low risk CAR applications ie where there is no intrusive work or carriageway interference



Dec 24 CARs by Type



General

- Dean Mitchell joined the team on 13 Jan and was thrust into the role alone due to the Network Lead having eye surgery
 - He has been made welcome by the contractors and TTM designers having worked @ NTA for KDC in the CAR team

Christmas Parades (from CoPTTM to NZGTTM)

- A lot of background work for Hikurangi, Waipu and Ruakaka Christmas Parades; these three events were *traffic managed by the Lions and volunteers*.
- Network Lead held meetings with the parties, *gained traffic management plans* which Fulton Hogan and Nadia Kaipo (private TTM designer) did *as a koha for them*.
- Also reached out to NZ Police through Sergeant Laura Whitcliffe-Davies who we work through @ WDC for events, and they had a presence at each parade.
- In effect these three parades were at no cost to the communities, apart from their time and the Network Lead. This was all made possible from the shift away from CoPTTM to the NZGTTM.
- Two review meetings held; Ruakaka we will remove some car parks outside the school to make a safer turning area for the vehicles. Waipu we are comfortable that the plan worked well. Hikurangi the Network Lead will catch up to review although there were no issues raised.



Ruakaka Christmas Parade

4 Performance

4.1 Performance Measures

Our District's roading network will be maintained in a satisfactory condition and in accordance with national safety and engineering standards

Performance Measure	2024 – 25 targets	Compliance
The change from the previous financial year in the number of fatalities and serious injury crashes on local road network, expressed as a number. (*does not include roads administered by Waka Kotahi/NZTA)	≤0	N/A *Measured annually
The average quality of a ride on a sealed local road network, measured by smooth travel exposure.	≥84%	N/A Measured annually
The percentage of the sealed local road network that is resurfaced.	≥9%	N/A Measured annually
The percentage of the sealed local road network that is rehabilitated.	≥0.7%	N/A Measured annually
The percentage of customer service requests relating to roads and footpaths to which the territorial authority responds within the time frame specified in the LTP.	≥60%	77.3% June n/a Dec
We will support alternative transport methods.		
The percentage of footpaths within a territorial authority district that fall within the level of service or service standard for the condition of footpaths that is set out in the territorial authority's relevant document (such as its Annual Plan, Activity Management Plan, Asset Management Plan, annual works programme or LTP).	≥ 98% in fair or better condition	N/A Measured annually
Total length of footpath network provided compared to requirements of Council Engineering Standards.	≥ 55% of network provided	N/A Measured annually

* Note Annual Results not available yet.

4.2 Key Activities

Road Maintenance & Renewals Contracts

Key Achievements:

- Key activities included continuation of pre-seal repairs and resurfacing works. A total of 1813 dispatches (individual works items) were completed across the network between 30 November and 31 December 2024.
- 67 individual work items audited in December:
- 17.81% of ordered works items being audited for compliance (65 jobs audited) of which 93.85% passed, and
- 0.1% of the routine works items being audited for compliance (2 jobs audited) of which 100% passed.
- Works delivered across 671 out of 1564 local roads giving 43% network coverage for December.
- Programme Completion Compliance on both maintenance contracts – 80% target
- 78.26% WDC North – Fulton Hogan
- 71.43% WDC South – Downer
 - 89 sump grates cleared to provide a clear path for urban stormwater to enter the reticulated system.
 - 21 unsealed potholes repaired using a mixture of lime and GAP40 aggregate.
 - 4 footpath trip hazards identified and remedied.
 - 650 m of high shoulder removed across the network to promote positive drainage from sealed pavements and prevent pothole formation.
 - 906.69 m² of sealed pavement repairs completed, including digouts, stabilised patches, mill and fills, and AC levelling.
 - 63 sealed potholes repaired using industry best practices, including removal of surrounding damage, emulsion tack coating, and waterproofing.
 - 68 damaged signs replaced, including street name blades, chevron boards, speed signs, and regulatory signage.
 - 20 road edge marker posts cleaned, straightened, replaced, or newly installed to provide clear delineation of the road edge.
 - 12 km of maintenance grading across the 677.5 km unsealed network, providing 2% network coverage.

Photos from across the network:



Digout repairs – Eden Terrace



Bridge Rail Repairs – Hikurangi



Unsealed Pothole Repairs – Clements Road



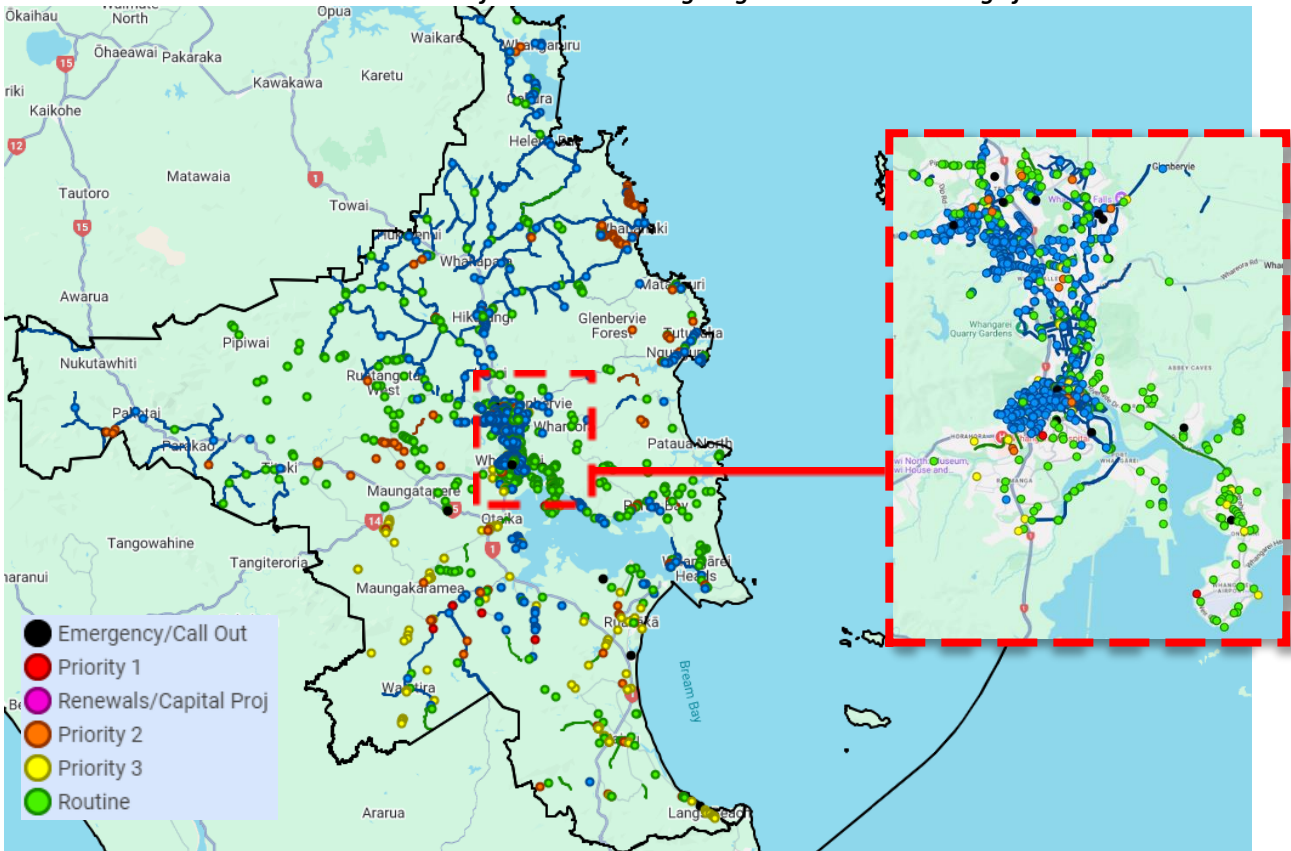
Sealed rutting repair – Springfield Road



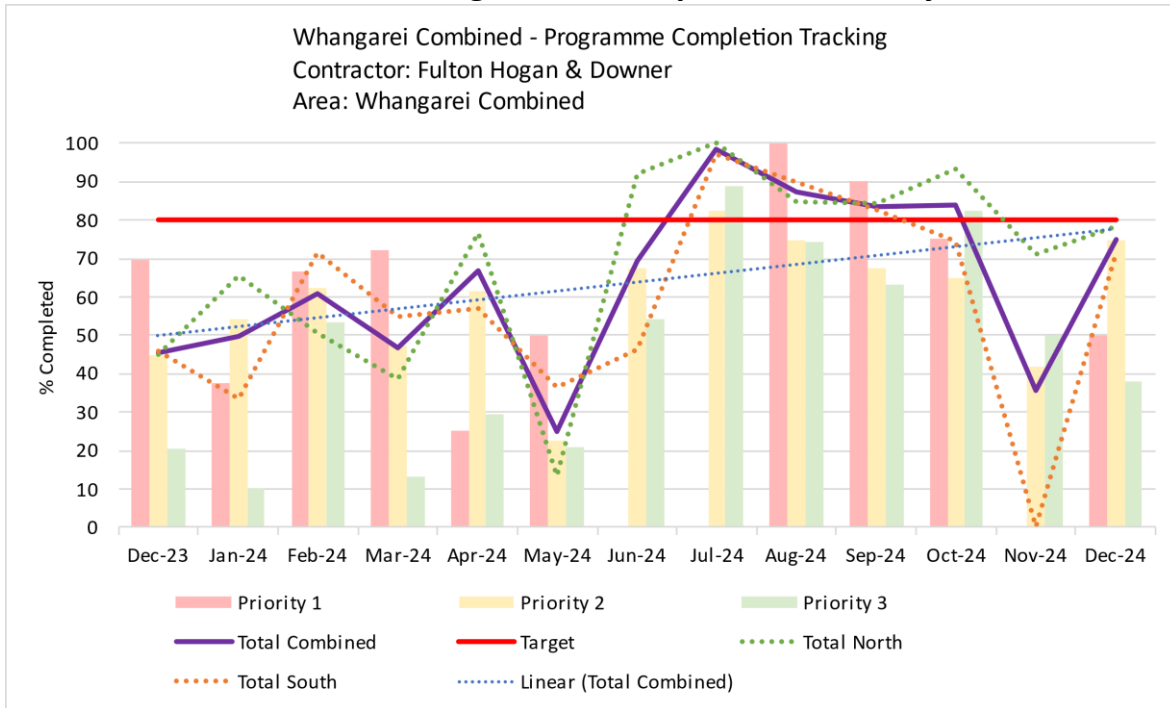
Stump removal and footpath repair – Aratiatia Place

December 2024 – All Works completion overview

Works delivered across 671 out of 1564 local roads giving 43% network coverage for December.



December Programme Completion Summary



December saw the North contract achieve 78% of its approved programme, and the South contract achieving 71%, falling slightly short of the 80% target – this was not unexpected given the typical pre Xmas influx of unscheduled works.

Emergency Works Recovery Programme

Phase 3 Delivery

Investigation and option reports are being reviewed for Memorial Drive, Kaiikanui Rd and Bay View Rd. Consultants continue to work on information that will support a direction for the Whangarei Heads slips at Reotahi and Taurikura. The site at Mania Club has moved to Phase 2 delivery – this involves councils maintenance contractor re-constructing the shoulder and re-levelling the pavement.

Panel agreements are being signed, once complete works will be issued.

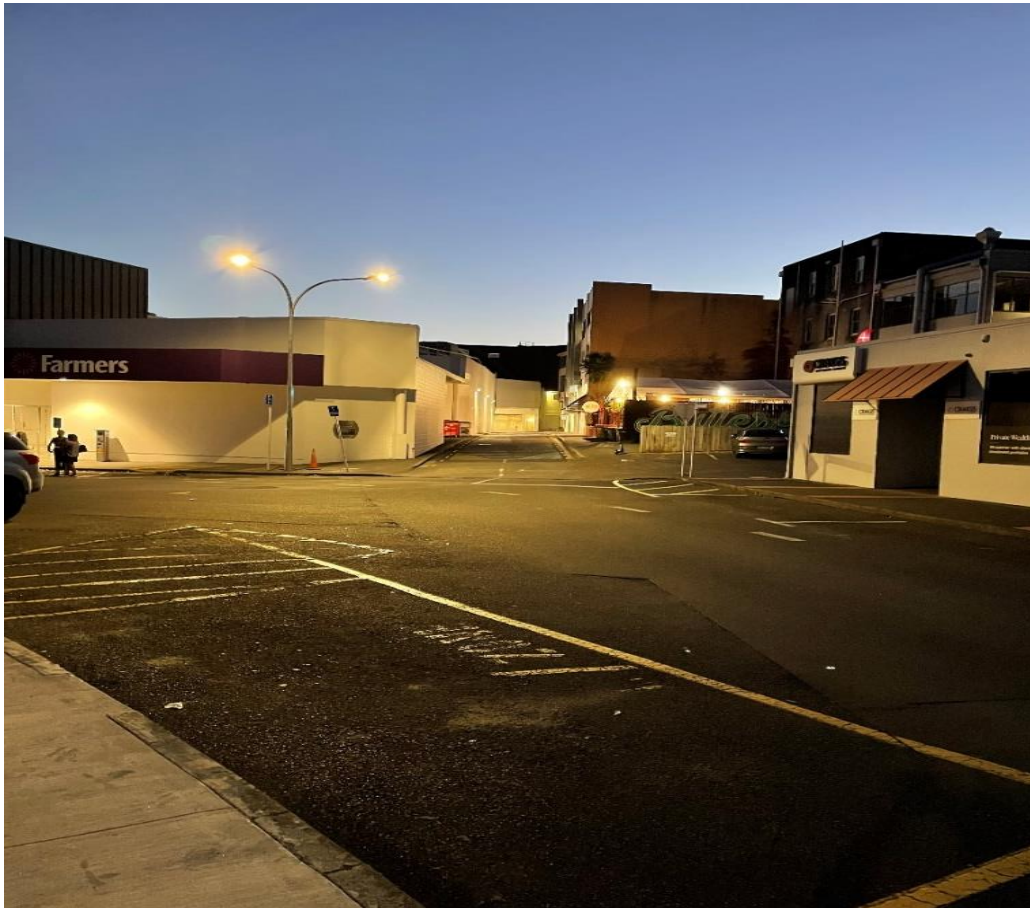
type	Location	RP	Estimated budj	stage
complex	Finlayson Brook Road	RP 7452 to RP 7522 (length 70 metres)	\$251,000.00	Planning
complex	Finlayson Brook Road	RP 7529 to RP 7644 (length 115 metres)	\$1,340,000.00	Planning
complex	Memorial Drive	RP 2247 to RP 2259 (length 12 metres)	\$1,100,000.00	Investigation
complex	Memorial Drive	RP 2535 to RP 2550 (length 15 metres)	\$585,000.00	Investigation
complex	Memorial Drive	RP 2599 to RP 2620 (length 20 metres)	\$1,250,000.00	Investigation
complex	Otuhi Road	RP 4891 to RP 4961 (length 70 metres)		Monitor
complex	Pipiwai Road North	RP 24500 to RP 24530 (length 30 metres)	\$365,000.00	Planning
complex	Whangarei Heads Road North	RP 20673 to RP 20813 Reotahi (length 123 metres)	\$460,000.00	Planning
complex	Whangarei Heads Road North	RP 21287 to RP 21336 Manaia (length 49 metres)	\$460,000.00	Planning
complex	Whangarei Heads Road North	RP 21651 to RP 21796 School (length 76 metres)	\$2,300,000.00	Monitor
complex	Whangarei Heads Road North	RP 23904 to RP 23945 Taurikura (length 39 metres)	\$460,000.00	Planning
stage 1	Shoemaker	RP 4954 to RP 4987 (length 33 metres)	\$96,106.00	completed
stage 1	SNOOKS RD	RP 7240 to RP 7246 (length 30 metres)	\$800,000.00	Design
stage 1	WAIPU GORGE RD	RP 3741	\$92,794.00	completed
complex	MAUNGAKARAMEA RD	RP 8312 to RP 8342 (length 30 metres)	\$777,000.00	completed
stage 1	BAY VIEW RD	RP 359 to RP 389 (length 30 metres)	\$350,000.00	Design
stage 1	KAIIKANUI RD	RP 10153 to RP 10188 (length 35 metres)	\$250,000.00	Design
stage 1b	KARAKA RD	RP 4990 to RP 5070 (length 80 metres)	\$870,000.00	Design
stage 1b	KAURI MOUNTAIN RD	RP 1677 to RP 1757 (length 80 metres)	\$725,000.00	Design
stage 1b	CROWS NEST ROAD	RP 6372 to RP 6422 (length 50 metres)	\$583,625.00	Design

Road Lighting

- Council has the streetlight central management system up and running, and working through some items relating to posting of faults and summary reporting . This is a control system like the one we use on the traffic signals that allows for the operational status of the lighting to be reviewed and faults communicated through a web portal. We expect that this will reduce the need for night inspections going forward.
- The maintenance contractor did a good job of installing additional lighting at short notice to address concerns regarding lighting in Butter Factory lane, without installing additional columns in this constrained location. This has gone a long way towards remedying the poor visibility in the area.



Before upgrade



After upgrade

Traffic Signals

- SH1/Kamo Rd closure: WDC assisted NZTA and their contractors to complete a road closure of Te Rauponga Dr commencing on 12/1/25. This is underway at time of this report and completion is expected by end January 25.
- CSL did well to complete temporary software to allow a special event closure of Vine St to ensure the safety of the Vibes on Vine event in February. This has been commissioned and been through the entire process from concept to completion of testing in 3 weeks.
- The Art on Boxes project in association with Venues & Events and Creative Northland to apply art to selected traffic signal control cabinets is now complete with art on ten cabinets. This is to improve the appearance of the streetscape and to assist with managing graffiti on cabinets. Local artists were used for this work and CSL assisted with their safety while in the road corridor.
- Since installation of the art in December we have had to address one lot of tagging at Rathbone St/Robert St, which Creative Northland removed and repainted.
- A sample of the art is shown below:



1 Bank St/Cameron St



2 Bank St/Water St



4 Dent St/Hatea Dr



5 Dent St/John St crossing





7 Rathbone St/Robert St



18 Kamo Shared Path



25 Rust Ave crossing

- Works at Whau Valley to address communications is now complete and the connection of this site to fibre has successfully treated the drop-outs experienced with the weak cell reception. There have been no further drop-outs of communications since the migration to fibre.
- Council is working with NZTA to convert the large intersection at SH1 Western Hills Dr/Kamo Rd to fibre communications and install vehicle detection imaging cameras to improve the quality and resilience of operations at this busy intersection. This work is being done in conjunction with the sealing works.
- Further sites will be identified for installation of fibre optic communications as we need the reliability and capacity to install the
- With the sealing works on Bank St a review of the vehicle detection is underway and as the first stage of that, 2 new vehicle detection imaging cameras have been installed at this site also.
- The power outages over recent times have highlighted there is a need for resilience work to enhance security of power supply by providing backup supply at selected sites. This is being considered for future works. Works need to consider how we will deal with an extended power outage that impacts the entire town, and how to facilitate an orderly egress from the CBD area.
- We have been experiencing an increase in graffiti on all traffic signals equipment and this is taking quite a bit of time to remove. Stickers are a particular problem. It is hoped that the Art on Boxes mentioned above will assist with this on cabinets, going forward. Experience in other locations such as Paihia has found that if there is existing art on cabinets, this tends to be respected to a greater degree than a single colour

finish.

Mechanical Bridges

- Contract 24042 Cleaning and Minor Works has been awarded to Whangarei Construction.
- Kotuitui Whitinga bridge project to address handrail corrosion resulting from paint deterioration is now completed. The additional health and safety monitoring and measures have ensured a safe and successful completion.
- Routine cleaning of both bridges has been completed.
- Te Matau a Pohe W1 machinery pit: The structural steelwork module fabrication for the platforms is now complete and ready for installation which is being programmed.
- Te Matau a Pohe hydraulic lines under the bridge has been inspected using a barge and cherry picker this month. Contractor's report has been received and options are being assessed.

Active Transport

Cycling Statistics

Emission savings data is now set up for existing cycling and pedestrian counts. Emission savings figures indicate grams of carbon saved during commuting hours (7:30-9am, 2-3pm, 4-6pm).

Some assumptions are necessary to enable emissions data. These assumptions are deliberately conservative to ensure data is as defensive as possible.

Emission savings sites are aligned as closely as possible with historical cordon count locations to reduce any double counting of commuters across count sites. The data focuses on users coming into the city in the morning peak, and out of the city in the afternoon peak.

- 13 Manse St – south counter 7:30-9am, north counter 2-3pm, 4-6pm
- Hatea Drive Reserve – south counter 7:30-9am, north counter 2-3pm, 4-6pm
- 151 Riverside Dr – north counter 7:30-9am, south counter 2-3pm, 4-6pm
- 1 Riverside Dr – south-west counter 7:30-9am, north-east counter 2-3pm, 4-6pm
- 1 Riverside Dr Bike Lane – east counter 7:30-9am, west counter 2-3pm, 4-6pm
- 16 Rust Ave (camera 1 only) – south counter 7:30-9am, north counter 2-3pm, 4-6pm
- 20 Rust Ave – south-east counter 7:30-9am, north-west counter 2-3pm, 4-6pm
- 15 Maunu Rd – east counter 7:30-9am, west counter 2-3pm, 4-6pm

Each km of travel by walking or cycling saves 161g CO₂e/km (grams of CO₂ per km). 161g/km is the New Zealand average for cars and SUVs as determined by central government. For pedestrians, a 1km trip distance is assumed. For cyclists and scooters, a 3km trip distance is assumed. These figures are determined by New Zealand Household Travel Survey data.

In 2023, emissions savings averaged **4 tonnes** CO₂ per month for a total of **48 tonnes CO₂** saved.

In 2024, emissions savings averaged **4.4 tonnes** CO₂ per month for a total of **53.4 tonnes CO₂** saved.

To put the emissions savings data into perspective, 1 tonne of CO₂ is equivalent to driving 6,000km in a diesel car or charging 121,643 smartphones.

Cycling count comparisons

Cycling counts continue to be monitored across the network.

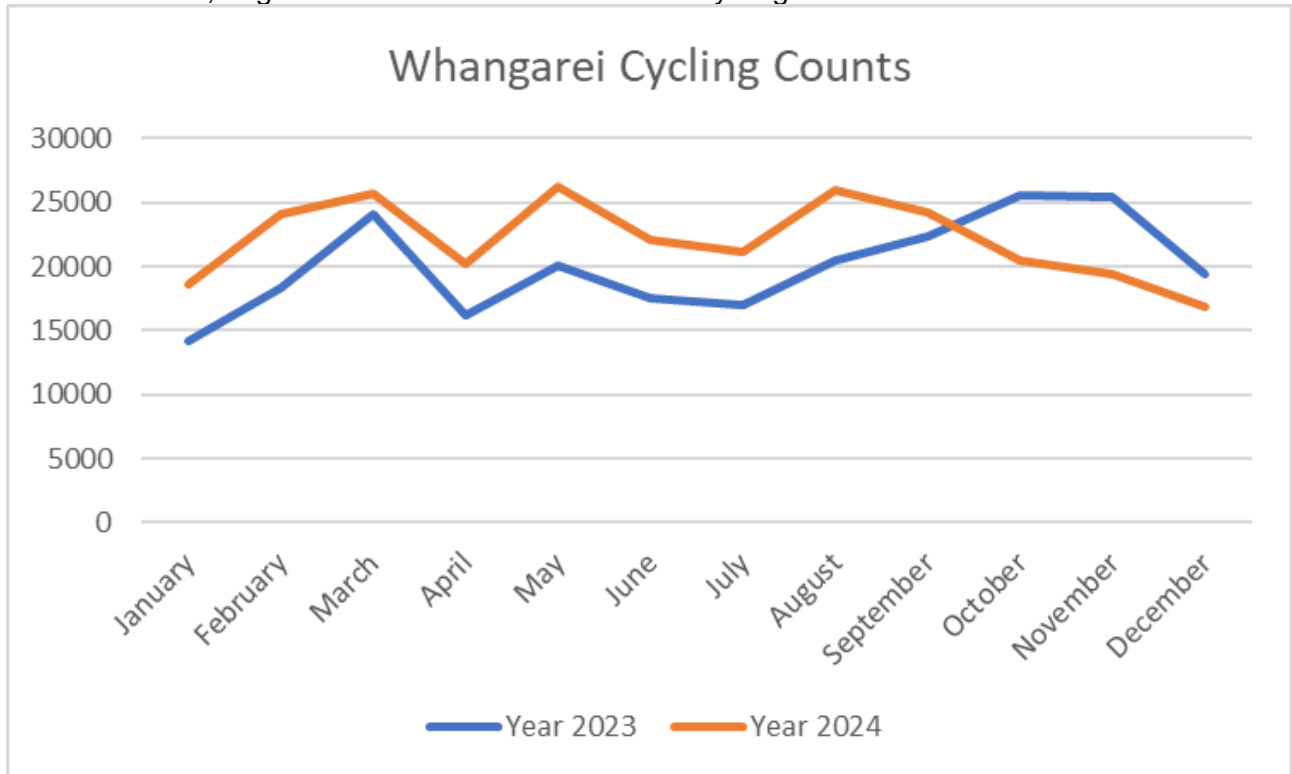
Current camera locations:

- 16 Rust Ave (2 cameras, one heritage and one installed July 2024)
- 1 Riverside Dr (2 camera zones)
- 15 Maunu Rd
- 13 Manse St
- Hatea Dr Reserve
- 20 Rust Ave
- 151 Riverside Dr
- 61 Fisher Tce (installed late 2023)
- 63 Jack St (installed late 2023)
- 60 Matipo PI (installed late 2023)

- Dent St (installed July 2024)
- Three Mile Bush Rd (installed July 2024)
- Westend Ave (2 cameras, installed August 2024)

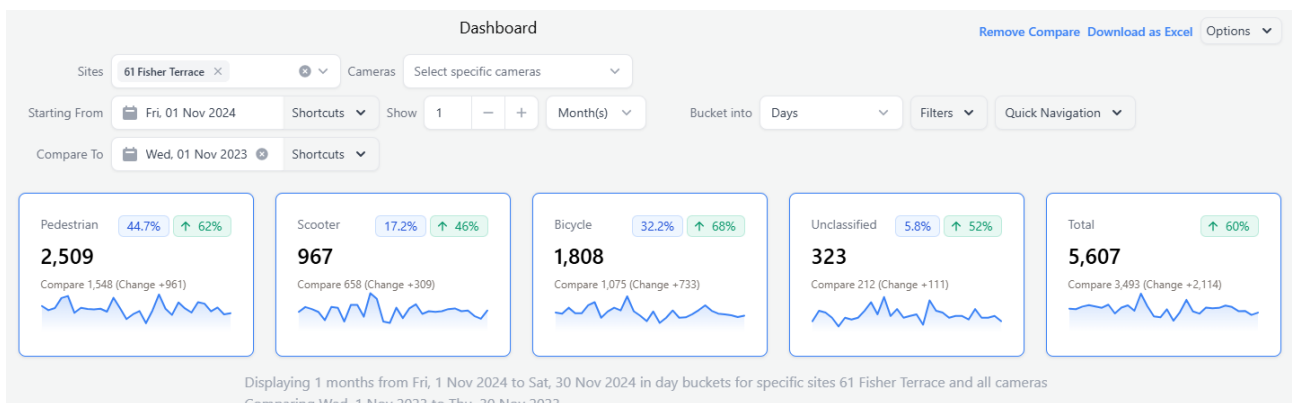
Newer cameras are excluded from the below data; trends are accurate and not skewed by the latest additions to the network.

November and December 2024 saw a slight decrease in cycling counts compared to the same months in 2023, to give an overall annual increase in cycling movements of 10%.



Kamo Shared Path stage 5 activity

The Fisher Terrace counter (installed Nov 2023) can now be used to provide month on month comparisons for increased usage of the Kamo Shared Path stage 5.



November 2024 saw a 60% increase across all active modes for this section of the Kamo Shared Path, and December saw a 33% increase. This demonstrates a marked increase in activity now that the new stage is open.

Bike Skills Training

Bike Northland Contract 19008 – delivering bike skills in school and supporting the bikes in school's program. Bike Northland also offer adult cycle skills which are covered in the Grade 1.5/2 category:

2024/25 Whangarei District Council		
Course	Contracted	YTD
Grade 1 (beginners)	1240	607
Grade 1.5/2/Adults	500	763

Summary of Activities:

November:

- Total of 65 students participated in Cycle Skills training during November and a more than 100 more participated in tailored and community sessions.
 - Total of 65 youth participated in Grade 2
 - I Have A Dream (5 sessions) - 36 participants, 6 adults in tailored community
 - Maromaku Primary bike safety basics, games and skills – 30 participants (whole school)
 - Shackleton Sea Scouts session – 20 participants aged 5-8
 - Villy Day out – Blindzone Demonstration, Bike maintenance, supporting Bream Bay Shared Path Group.

December:

- Total of 81 students participated in Cycle Skills training and activities during December
 - Total of 20 youth participated in Beginner/Grade 1
 - I Have A Dream (3 sessions) – Included two sessions at the Bike Park and a group ride along the Ngunguru Coach Road.
 - Kaurihohore Primary bike safety basics, games and skills – 25 students
 - Learn to Ride = Free community session aimed at Tamariki and their whanau learning to ride on two wheels. Sessions include tips for whanau and games to practice. Half the participants left riding independently with the rest greatly improved and hoping to return for January session.



*Blindzone demonstration at Ruakaka Villy Day
Grade 2*



Whangarei Primary School

Road Safety

Year to date fatal injuries – 2021 to 2025

Year	2021		2022		2023		2024		2025	
Road Type	SH	LR	SH	LR	SH	LR	SH	LR	SH	LR
Number of Fatal's	1	0	0	1	0	2	2	0	0	0

SH – State Highway, LR – Local Road

Fatal Crash Investigations

There were no fatal crashes on roads controlled by Whangarei District Council in the Month of November and December.

Road Safety Promotion activities

During the month of December Northland road safety partners worked with NZ Police, ACC, and NZTA to develop material to aid NZ Police in their enforcement operations to support the concept of general deterrence. The initiative involved road safety providers putting out consistent messaging on information sharing platforms or events, and with the lead up to the holiday period the message was about impaired driving. The NZ Police then went out and targeted breath testing. The hope was that general deterrence came from seeing the message, hopefully multiple times, and then seeing NZ Police out enforcing it, dissuading the general public from committing the crime.

Whangarei District Council did a social media post with the following results:

Views: 78,822 (30% followers, 70% non-followers)

Reach: 31,360

Interactions: 220 (153 reactions, 35 comments, 31 shares)



There were no fatal crashes in Whangarei over the Christmas/New Year period compared to one for the 2023/24 period and three for the 2022/23 period.

Northland Road Safety Trust (Contract 21034) is contracted to deliver on road safety promotions activity and below is a summary of the Road Safety Promotion activities during the month.

DRIVER LICENSING PROGRAMMES DECEMBER 2024

		Passed	Active (getting Mentored)	YTD 24-25	# Of Mentors
People Potential Whangarei	Learners:	8 out of 9	N/A	42	N/A
	Restricted/Full:	4 out of 6	12	26	3
Blue Light (Police):	Learners:	0		0	
	Restricted/Full:	55 out of 65	60	288	3
Howard League	Special License Endorsements:	N/A Dec forklift N/A Dec HMV	55	50	3
Ngatiwai Trust:	Learners:	11 out of 11	N/A	54	N/A
	Restricted/Full:	24 out of 26	25	132	2
Kamo High School:	Learners/ Restricted:	Planning underway for mobile testing.	17 gateway students	32	2
Northern Health School:	NZQA Licensing Programme:	15 Learner Licenses	N/A	26	3



STOP ALCOHOL IMPAIRED DRIVING (SAID)

Allocated Number Dec 24:	15
Attended:	11
Completed:	11
Year To Date 24-25:	44

FATIGUE STOPS AT URETITI

Dates:	Completed:	Vehicle Stopped:	Interactions:
02/02/2024	Yes	111	204
28/03/2024	Yes	87	185
25/10/2024	Yes	82	174
13/12/2024	Yes	69	120

DRIVE SMARTA

Start Date: 06/12/2024	8 Allocated	4 Completed	15 YTD 24-25
------------------------	----------------	----------------	-----------------

DRIVE SOBA (RECIDIVIST DRINK DRIVING)

Complete: 04/09/23-04/12/23	6 Completed
Complete: 12/01/24-13/05/24	9 Completed
Complete: 10/06/24-26/08/24	4 Completed
Complete: 07/10/24-16/12/24	8 Completed 12 year to date 24-25

CHILD RESTRAINTS (PLUNKET)

Where/When:	What:	Results:
5th and 12th December 2024 @ 33 King Street, Whangarei	Car seat checks, installations and advice by qualified technician.	15 families, 7 full installations, 6 technical faults being corrected, 15 general advice.
December '24 events:	Whangarei A&P support for road safety site.	Spoke with parents and soon to be parents around car seats and driveway safety.
December '24 referrals:	Donated seats on referrals.	2 convertible seat + 3 booster.

DRUG IMPAIRED DRIVING PROGRAMME

Start Date: 13/12/2024	5 Allocated	4 Completed	16 YTD 24-25
------------------------	----------------	----------------	-----------------

RIDE FOREVER MOTORCYCLE SAFETY DECEMBER 2024 PROGRAMME

Motorcycle Safety Programme	Participants Attended
Bronze License Programme	2 out of 2 completed
Silver License Programme	5 out of 5 completed
Gold License Programme	9 out of 9 completed
Total YTD 24-25	67 completed

CHILD RESTRAINTS (PLUNKET)

Where/When:	What:	Results:
9th December '24 @ 29 Hokianga Road, Dargaville	Car seat checks, installations and advice by qualified technician.	1 families, 1 car seats checked, 1 technical faults corrected, 1 general advice.
December '24 events:	Whangarei A&P support for Road Safety site.	Spoke with parents and soon to be parents around car seats and driveway safety.
December '24 referrals:	Donated seats.	1 convertible seat + 0 full booster.

FATIGUE STOP:

- 13/12/2024
- URETITI, STATE HIGHWAY 1
- 69 VEHICLES STOPPED
- 120 INTERACTIONS WITH THE PUBLIC



4.3 Contractor Performance

Transportation Road Maintenance & Renewals Contracts Monthly Contractor Performance

Contract	Supplier	Performance	Comment
Road Maintenance (North)	Fulton Hogan	Room for improvement	Final monthly network compliance score of 35
Road Maintenance (South)	Downer	Under Performing	Final monthly network compliance score of 62 .
Parking Meter Maintenance	Mobicom	Good	No issues
LHBr Hydraulics	LC Hydraulics	Good	Contractor has completed annual inspection and maintenance of Kotuitui Whitinga and handrail works
LHBr Electrics	McKay Electrical	Satisfactory	Contractor working electrical maintenance as expected.
LHBr Operations	Northern District Security	Good	Bridge operations is being managed well & as expected.
Streetlight Maintenance	Currie Electrical Ltd (CSLi)	Satisfactory	Significant works related to maintenance activity, compounded by CMS and Capital works.
Traffic Signal Maintenance	CSLi	Good	Contractor working on renewals.

5 Significant Risks and issues

Risk event	Cause & Consequence	Controls and Mitigation
Cost increases result in reduction of maintenance and operation activities	Funding for M&O was reduced by Waka Kotahi at the start of the LTP. Cost escalations of circa 12% have further exacerbated these issues.	Reprioritise works Consider alternative investment paths – e.g., improved treatment of unsealed roads rather than unsubsidised seal extensions.
Impact of storm damage response on current programme and Business as Usual works	Up to \$10M additional repairs works on top of BAU maintenance programme and Capital delivery programme.	Reprioritise works to ensure deliverable programme. Defer works to following year.

6 Capital Work

Delivery against Capital Programme

The focus has largely been on pre-seal repairs and site specific repairs ahead of bulk renewals, reseals and drainage work. This will result in a greater spend towards the back end of the construction period.

The Rose Street and T2 Lane projects have drop dead end of June timeframes and therefore there is significant focus on completing these projects on time and budget.

The Springs Flat Project is a significant portion of the work however this is subject to Council approval of the Contract once procurement has been completed.

Project updates

Transport Capital Projects	Current Phase	Estimated Construction Start Date	Estimated Completion Date	RAG Status
Port / Kioreroa Intersection Upgrade (CIP)	Delivery - Construction	Jul-22	Dec-24	
<p>Roundabout, pedestrian crossings and Kiwirail infrastructure is complete and a final completion certificate has been issued.</p> <p>RAG is Amber as the coordination of the software between pedestrian signals and Kiwirail signals has been further delayed by Kiwirail and is now not expected to occur until early 2025.</p> <p>Contractor/Consultant: United Civil Construction / WSP</p>				
Waterfront to City Centre Connection (John Street)	Delivery- Design	TBC	TBC	
<p>The Establishment & Alignment Stage has been completed. The design team has moved into the Concept Design Stage which is due to be completed in February 2025. The project team is working well with internal and external stakeholders. A briefing for Elected Members is scheduled for the end of February with support being sought to progress to Detailed Design.</p> <p>The project is progressing on time and on budget with Detailed Design due to be issued in August 2025.</p> <p>Consultants: Isthmus/ Flow/ Chester/ Bluewater</p>				
Ratepayer subsidised seal extensions	Delivery- Design Design	TBC	TBC	
<p>Gray Road RP 25 – 1325 (1.3km) Investigation and design stage - Contractor – FH . Expected start date of April. Sealing likely to be October.</p> <p>McClellan Road – RP 400 – 1910 (1.5km) To be delivered through FH Maintenance Contract to expedite delivery this construction season. Works currently being priced with an indicative start date of February</p> <p>Ormandy Road – RP 4791-6791 (2.0km). Investigation and design stage - Consultant – Beca</p> <p>Design for McClellan Road will be finished first before the team move onto Ormandy. Construction for Ormandy has been carried forward to year 2 of the LTP and will be tendered</p>				

Transport Capital Projects	Current Phase	Estimated Construction Start Date	Estimated Completion Date	RAG Status
Dave Culham Drive	Delivery - Construction	Jan - 25	Feb - 25	
<p>Works are underway in January with full completion early February – lane closures for 3 weeks and then works outside the road shoulders continuing into February.</p>				
New Footpath – Kopipi Cres Ngunguru	Validate	TBC	TBC	

Design has been developed in conjunction with local ward councillors. An open day is planned for Thursday 30th January 4pm to 6pm at the sports centre to seek community feedback on the proposed works.

RAG Amber as high level estimated cost of the full proposal is approximately \$700k. Confirmation that the three-year footpath budget can be fully utilised for this one site will be needed. Alternative is to stage the works over several years. It is noted the extent of the works may change following public consultation and detailed pricing, for example the section on Pine Road adjacent the park could be postponed to a future date pending available budgets.



Transport Capital Projects	Current Phase	Estimated Construction Start Date	Estimated Completion Date	RAG Status
Future Footpaths	Validate	TBC	TBC	
King Street Hikurangi – Investigation stage (confirmation of funding source through EM Community Request fund is being progressed) Marsh Road – Ruakaka – Investigation stage Slako Crescent – Ruakaka – Investigation stage Albany Road – One Tree Point – Investigation Stage Whangarei Heads Road – Waikaraka – Investigation Stage				

Transport Choices Programme

Key Progress

- Clark Road, Raumanga Slow Streets (Tauroa Road), and Raumanga Reserve projects were all completed in December.
- Raumanga Shared Path Stage 4 lighting and shared path extension project is currently in procurement.
- The Kamo Priority Lane project is well underway and Section 2 (Whau Valley lights north) is to commence in the coming month.
- Rose Street Bus Hub has commenced Contract works on site.

Transport Choices Programme	Current Phase	Estimated Construction Start Date	Estimated Completion Date	RAG Status
Kamo Active Modes - WHGR02	Close	Oct-23	Dec-24	
<p>Kamo Shared Path Stage 5 – Village Works is complete</p> <p>Kamo Slow Streets / Clark Road is complete</p>				
Raumanga Active Modes - WHGR03	Delivery - Construction	Oct-23	May-25	
<p>Raumanga South Slow Streets project is complete.</p> <p>Raumanga Shared Path Stage 4 (lighting and minor footpath works) is currently in procurement with a programmed end date for early May.</p> <p>Raumanga Reserve playground safety links are complete.</p> <p>Cafler Park Boardwalk is complete.</p> <p>First Ave Alleyways is complete.</p>				
Public Transport - WHGR04	Delivery - Construction	Oct-23	Jun-25	
<p>The Kamo Priority Lane is making good progress.</p> <p>The visibility of the painted over lines has presented issues but is to be rectified utilising a trial approach.</p> <p>Section 2 (Whau Valley lights north) is to commence in the coming month.</p> <p>5 signalised crossings are also to be constructed by the end of May. Some of these will replace zebra crossings which will allow traffic flow to be improved.</p> <p>Bus Shelter Upgrade project is complete.</p> <p>Rose Street Bus Hub Stage 2 all temporary facilities for NRC have been stood up, and buses are now operating from Vine Street.</p> <p>ACL are the Contractors and construction has commenced on site, with a completed programme date indicated in June. For this reason, this package has an amber risk rating, as funding for the TC programme is not available past the end of June.</p>				

Infrastructure Acceleration Fund

Funding for the Springs Flat project has been approved by Kainga Ora. This project is broken into three separate projects as detailed in the table below.

All projects are in design and progress to construction is dependent on confirmation in the wider Tikipunga Growth Infrastructure Response Plan.

Infrastructure Acceleration Fund Programme	Current Phase	Estimated Construction Start Date	Estimated Completion Date	RAG Status
Springs Flat Roundabout & Approach Roads	Delivery - Design	Feb-25	Dec-26	
<p>RAG status is currently RED as a Council decision is required to approve the Contract Award.</p> <p>The detailed design is approximately 95% complete. Five submissions have been made to the WDC consent application. These mostly relate to noise and vibration concerns and discussions with these submitters are commencing. The NRC consent application is still being processed.</p> <p>The box culvert supply contract was awarded to Humes, and they are currently being manufactured.</p> <p>The house removal work has been awarded to TR Piling and this work is likely to occur in early/mid February. Two houses are being temporarily located onto residual Council owned land at the site (6 Pearce Dr) and a subdivision of this surplus land is being planned to maximise the value of the land and houses.</p> <p>Clearing of the stream below the State Highway culvert has been undertaken and this should reduce the current flooding risk on Springs Flat Rd.</p> <p>The purchase of four properties has been completed. Another partial property purchase was approved at the November Council meeting and will be settled in late January. Further land negotiations are ongoing.</p> <p>Infrastructure Agreements with the supermarket developer and Beacondale Link developer are nearly finalised and are likely to be brought to the February Council meeting for approval. This includes the enabling works for the roundabout including earthworks and drainage works.</p> <p>Prices have been received for ecological planting of the site (long lead item) and approval to award this work is currently being sought.</p> <p>Consultant: Northern Civil Consulting Engineers. Contractor: TBC</p>				
Gillingham Road Bridge Replacement	Delivery - Design	Nov-24	Feb-26	
<p>RAG is Red as Council decision required to approve Contract Award.</p> <p>The NRC and WDC consent applications for the Gillingham Bridge were lodged on 9 December and are currently being processed. A building consent exemption has been granted for the bridge.</p> <p>Tender documents for the bridge were released to the market on 5 December and these close on 4 February. There has been a considerable interest in this tender.</p> <p>Ducting for the service relocations has been completed and the services are likely to be relocated in February.</p> <p>Consultant: WSP Contractor: TBC</p>				

Photo Wall – Transport



CON22093 Whangarei Urban Traffic Calming - Tauroa Street (Transport Choices) - construction of new asphalt hump



CON22093 Whangarei Urban Traffic Calming - Tauroa Street (Transport Choices) - construction of new concrete courtesy crossing



CON22093 Whangarei Urban Traffic Calming - Clark Road and Cambridge Street intersection (Transport Choices) - construction of new kerbs and footpaths connections



CON24044 Public Transport Improvements (Onerahi) - Old Onerahi Road/Waimahanga Road intersection - Laying renewed stormwater lines and preparing new concrete dish channel



CON17085 Rd Mtce & Renewal Nth – Pipiwai Rd (ctrl) Rehab



CON17086 Rd Mtce & Renewal Sth – Snooks Rd Rehab



CON17086 Rd Mtce & Renewal Sth – Three Mile Bush Rd Rehab



Mangapai Culvert



CON21039 - Mangapai Culvert



CON21039 - Mangapai Culvert



Paparoa Culvert



Paparoa Culvert

5.2 Contracts Approved Under Delegated Authority – November and December 2024

Meeting: Infrastructure Committee
Date of meeting: 13 February 2025
Reporting officer: Jim Sephton (General Manager – Transport and Community Infrastructure)

1 Purpose / Te Kaupapa

For the Infrastructure Committee to note Infrastructure contracts awarded under Chief Executive and General Manager delegated authority.

2 Recommendation / Whakataunga

That the Infrastructure Committee note the Infrastructure contracts awarded under Chief Executive and General Manager delegated authority.

3 Background / Horopaki

Table 1 (below) records Infrastructure contracts awarded under Chief Executive and General Manager delegated authority.

Attachment 1 provides a summary of the award process for each contract and a brief description of the works being undertaken.

Table 1: Infrastructure Contracts Awarded Under Delegated Authority

1. Roothing		Summary
	Contract Award: Springs Flat Roundabout Box Culvert Supply	<p>Contract for the Springs Flat Roundabout Box Culvert Supply be awarded to Humes Pipeline Systems for \$469,591.00 (Four Hundred and Sixty-Nine Thousand, Five Hundred and Ninety-One Dollars) excluding GST.</p> <p>A closed contest (invited prices) was in accordance with the procurement plan for this work which was approved at the August 2024 Council Meeting. The Engineer's estimate was \$518,000.</p>

		The contract is for the manufacture of high box culverts, including delivery to Whangarei, for the Springs Flat Roundabout
CON24042	Contract Award: Te Matau A Pohe and Kotuitui Whitinga Bridge – Cleaning & Minor Works 2024	<p>Contract 24042 for the Te Matau a Pohe and Kotuitui Whitinga Bridges – Cleaning & Minor Works 2024 be awarded to Whangarei Construction for the tendered amount of \$485,080.00 (four hundred and eighty five thousand, and eighty dollars) excluding GST.</p> <p>There were four tender documents submitted. The Engineer's estimate was \$486,940.</p> <p>The work includes undertaking inspections, routine and preventative maintenance, emergency repairs, and repair of accident damage. It also includes the cleaning and maintenance of the bridge structure, crash rails and handrails, graffiti removal and oiling timber handrails.</p>
CON22027	Contract Variation: Te Matau A Pohe and Kotuitui Whitinga Bridge – Electrical Maintenance 2024	<p>Contract CON22027: Te Matau a Pohe and Kotuitui Whitinga Bridges – Electrical Maintenance 2022 (McKay Limited) be extended for a further 36 months (3 years) from 1 December 2024 to 1 December 2027 and the contract value be increased to \$1,019,310.40 (one million and nineteen thousand, three hundred and ten dollars and forty cents) excluding GST.</p> <p>The contract was let with an initial term of 2 years and a potential roll over of another 3 years based on performance. The initial 2-year term expired on 1 December 2024 and the extension awarded based on good performance.</p> <p>This contract involves the inspection and maintenance of all the electrical and control systems of these bridges.</p>
CON22026	Contract Variation: Te Matau A Pohe and Kotuitui Whitinga Bridge – Hydraulic and Mechanical Maintenance 2022	<p>Contract CON22026: Te Matau a Pohe and Kotuitui Whitinga Bridges – Hydraulic and Mechanical Maintenance 2022 with LC Hydraulics Ltd be extended for a further 36 months (3 years) from 1 November 2024 to 1 November 2027 and the contract value be increased by \$636,026.89 to \$950,359.89 (nine hundred</p>

		<p>and fifty thousand, three hundred and fifty nine dollars and eighty nine cents) excluding GST.</p> <p>Contract was let with an initial term of 2 years starting on 1 November 2022 and a potential roll over (Separable Portion 2) of another 3 years based on performance. The initial 2 year term expired on 1 November 2024. Contract extension awarded based on good performance</p> <p>This contract involves the inspection and maintenance of all the hydraulic and mechanical systems of these bridges.</p>
CON24001	Contract Award: Rose St. Bus Hub Stage 2	<p>The contract for CON24001 be awarded to A-Line Construction Ltd for the tendered sum of \$1,557,909 (one million and five hundred and fifty-seven thousand and nine hundred and nine dollars) excluding GST.</p> <p>This project is 100% externally funded through the Waka Kotahi NZTA.</p> <p>Four Tender documents were submitted. The Engineer's estimate was \$1,922,041.</p> <p>This contract is for the construction of the new bus terminal at Rose Street, Whangarei. It includes demolition of the existing terminal and footpath, renewal of underground services, landscaping, a new public toilet block and walkway between Rose and Vine Streets.</p>
CON23039	Contract Variation: Nova Scotia Drive Safety Improvements	<p>The contract value for CON23039: Nova Scotia Drive Safety Improvements with Ventia NZ Ltd be increased by \$164,388.41 to \$705,142.69 (seven hundred and five thousand, one hundred and forty-two dollars and sixty-nine cents) excluding GST.</p> <p>This variation recognises the additional scope included in the contract so that all the work required in the corridor can be done in a single establishment. This additional scope could not have been reasonably foreseen and is greater than the contingency allowed for.</p> <p>The project was to undertake road safety improvements over a 180m section on Nova Scotia Drive at a bend in the road which has a history of motor vehicle incidents.</p>

CON23037	Contract Award: SP2 for CON23037 23/24 Safety Projects	<p>That Separable Portion 2 – Dave Culham crossing for contract CON23037: 23/24 Safety Projects be awarded to WM Construction for the sum of \$439,830.39 (four hundred and thirty nine thousand, eight hundred and thirty dollars, and thirty nine cents) excluding GST.</p> <p>This Separable Portion is part of a package of safety works and awarding it brings the total awarded value of the contract to \$1,602,195.40 (one million, six hundred and two thousand, one hundred and ninety five dollars, and forty cents).</p> <p>The original tender for the contract included a package of projects. Four Tender documents were submitted. The Engineer's estimate was \$1,550,000.</p> <p>This contract is to relocate the existing pedestrian crossing and construct associated footpath, kerb and channel and central islands.</p>
2. Wastewater		Summary
CON24059	Contract Award: Bridge Wastewater Pipeline Replacement Emergency Works	<p>The contract for the Waikaraka Wastewater Pipe Bridge Upgrade (CON24059) be awarded to Northern Drainage Ltd for the tendered sum of \$184,020.30 (one hundred and eighty four thousand and twenty dollars and thirty cents) excluding GST.</p> <p>Three tender documents were submitted. The Engineer's estimate was \$239,520.</p> <p>The existing wastewater pipeline aerial crossing at Waikaraka Bridge (Bridge #271; approx. 50m west of Waikaraka Road) along Whangārei Heads Road serves Whangārei Heads and is at risk of failure. The poor condition of the pipe has been exacerbated by a car accident that damaged the pipework and air release valve.</p>

3. Planning		Summary
CON15028	Contract Variation: Airport Location Options Study Proposed Site Selection	<p>The contract value for CON15028 with Beca be increased from \$756,160 (seven hundred and fifty six thousand, one hundred and sixty dollars) to \$885,213 (eight hundred and eighty five thousand, two hundred and thirteen dollars) excluding GST.</p> <p>Additional works required includes project management, meetings and engagement support over the period where the CVA approach was determined and implemented, then through to new programme end date, as well as additional site visits. Previously engagement support was excluded and to be charged on an ad hoc basis.</p>

4 Discussion / Whakawhiti kōrero

Report is for noting only – no decision is required from the Infrastructure Committee.

4.1 Financial/budget considerations

Financial considerations are applied at contract award stage.

5 Significance and engagement / Te Hira me te Arawhiti

The decisions or matters of this Agenda do not trigger the significance criteria outlined in Council's Significance and Engagement Policy, and the public will be informed via agenda publication on the website.

6 Attachments / Ngā Tāpiritanga

1. Report Summary of Contracts Approved Under Delegated Authority – November & December 2024

Summary of Contracts Approved Under Delegated Authority

This attachment provides a summary of the award process and works being undertaken for Infrastructure contracts awarded under Chief Executive and General Manager delegated authority.

1 Roding

Contract Award: Springs Flat Roundabout Box Culvert Supply
--

Chief Executive Approval

That the supply of the Springs Flat Roundabout Box Culvert Supply be awarded to Humes Pipeline Systems for \$469,591.00 (Four Hundred and Sixty-Nine Thousand, Five Hundred and Ninety-One Dollars) excluding GST.

Scope

The supply of box culverts is required for the piping of the stream on the eastern side of SH1. Quotes have been sought for the box culvert supply, because these are long lead items which will take approximately 3 months to manufacture. If the project goes ahead then these box culverts will be installed by the Stage 1 enabling works contractor.

Should the Springs Flat Project not proceed, then the culverts will be redirected to other projects.

The scope of this work is as follows:

- Manufacture of 111m of 3m wide x 2m high box culverts
- Manufacture of headwalls and wingwalls both ends of the culvert
- Provision of all associated hardware to install the box culvert
- Fish baffles for the base of the culverts
- Delivery to Whangarei

Procurement

The work was issued to four reputable, locally based box culvert suppliers as follows:

- Absolute Concrete
- Busck Prestressed Concrete
- Humes Pipeline Systems
- Hynds Pipe Systems

A closed contest (invited prices) was in accordance with the procurement plan for this work which was approved at the August 2024 Council Meeting. A departure to Council's Procurement Manual was approved as part of the approved procurement plan to use a closed contest process for works more than \$100,000 in value.

Quotes were received from the suppliers listed above. These quotes were assessed on the basis of price and timeframe. All of these quotes would achieve the deliverable date.

The result of the price evaluation process is described in the table below:

Supplier	Quoted Price (excl GST)	Adjustments	Adjusted Quote Price (excl GST)
Absolute Concrete	\$520,622.00	-\$30,000	\$490,622.00
Busck Prestressed Concrete	\$691,977.00	+\$30,000	\$721,977.00
Humes Pipeline Systems	\$469,591.00	\$0	\$469,591.00
Hynds Pipe Systems	\$490,152.31	+\$15,000	\$505,152.31
Engineer's Estimate	\$518,000.00		

Adjustments to the above quotes were made due to the following issues:

- Absolute Concrete – Quote did not include fish baffles but did include hiab delivery truck (so saving on craneage at delivery site). This had an overall positive impact on their price.
- Busck Prestressed Concrete – Quote did not include fish baffles, grout material or linkage bars.
- Hynds Pipe Systems – Quote did not include fish baffles.

The result of this assessment is that the Humes Pipeline Systems quote was the lowest priced quote and had the lowest adjusted quote price. Humes Pipeline Systems has been a supplier of pipe systems including box culvert supply for over 100 years and has been used on many WDC and NZTA projects in the past.

The Humes Pipeline Systems quote is 9% lower than the Engineer's Estimate.

An arithmetic check was undertaken, and no arithmetic errors were found in the Humes Pipeline Systems quote.

Financial Details

Status of approved Council Budget

Approved Budget Source	Springs Flat Roundabout
Approved Total Budget	\$27,200,000
Cost to Date	\$4,351,530
Available Remaining Budget	\$22,848,470
This procurement value	\$469,591

The remaining budget for the project is \$22,848,470 and therefore there is sufficient budget to award this work.

CON24042

Contract Award: Te Matau A Pohe and Kotuitui Whitinga Bridge – Cleaning & Minor Works 2024

Chief Executive Approval

That Contract 24042 for the Te Matau a Pohe and Kotuitui Whitinga Bridges – Cleaning & Minor Works 2024 be awarded to Whangarei Construction for \$485,080.00 (Four Hundred and Eighty Five Thousand, and Eighty Dollars) excluding GST.

Contract Scope

Contract 24042 is a service contract for the cleaning and minor structural maintenance of the Te Matau a Pohe and Kotuitui Whitinga opening bridges in Whangarei City.

The work includes undertaking inspections, routine and preventative maintenance, emergency repairs, and repair of accident damage. This includes the cleaning and maintenance of the bridge structure, crash rails and handrails including graffiti removal and oiling timber handrails.

The key outcomes for this contract are keeping the Te Matau a Pohe and Kotuitui Whitinga bridges clean and tidy and well maintained in a cost-effective manner.

The initial term of this contract is 2 years with a possible 3-year roll-over subject to meeting performance criteria.

This contract is the retender and combination of the existing Contracts 22029 and 22030 for providing the same service. The incumbent contractor is Whangarei Construction.

Procurement

Contract 24042 was publicly tendered on the TenderLink and GETS websites. Tenders closed on 4 November 2024.

Three conforming tenders were received as described below:

- Asset Construction
- SRG Global
- Whangarei Construction

These tenders were evaluated using the Price Quality Method in accordance with the Roadway Procurement Strategy and NZ Transport Agency's Procurement Manual.

The result of the tender evaluation process is described in the table below:

Tender	Tender Price (excl GST)	Supplier Quality Premium	Adjusted Tender Price (excl GST)
Asset Construction	\$638,385.16	\$0.00	\$638,385.16
SRG Global	\$515,878.00	\$37,649.86	\$478,228.14

Whangarei Construction	\$485,080.00	\$44,753.39	\$440,326.61
Engineer's Estimate	\$486,940.00		

The Whangarei Construction tender was found to have the lowest overall adjusted tender price and is therefore the preferred tender. Whangarei Construction also had the highest non-price attribute scores. They have been involved in the cleaning and structural maintenance of the bridges since they were originally built and are the incumbent contractor for this work.

The Whangarei Construction tender is 0.5% lower than the Engineer's Estimate.

An arithmetic check was undertaken of the Whangarei Construction tender and found that there was an error in how they had multiplied their labour rates. This error would have added \$101,070.00 to their tender price. In accordance with the NZTA procurement process, Whangarei Construction have adjusted their priced rates so that their tender price has remained the same. Their revised rates have been reviewed and accepted by the Tender Evaluation Team.

Financial Details

Status of approved Council Budget

Approved Budget Source	11116 – Roading Structures – LHB Maintenance & 00213 – Structures Component Replacement – General
Approved Total Budget	\$1,650,000 from 11116 <u>\$710,000 from 00213</u> \$2,360,000 Total
Available Remaining Budget	\$1,057,275

The remaining budget is \$1,057,275, which is higher than the Whangarei Construction tender price of \$485,080.00. This demonstrates that there is a sufficient budget to afford this contract.

CON22027

Contract Variation: Te Matau A Pohe and Kotuitui Whitinga Bridge – Electrical Maintenance 2024

Chief Executive Approval

That contract CON22027: Te Matau a Pohe and Kotuitui Whitinga Bridges – Electrical Maintenance 2022 be extended for a further 36 months (3 years) from 1 December 2024 to 1 December 2027 and the contract value be increased to \$1,019,310.40 (One Million and Nineteen Thousand, Three Hundred and Ten Dollars and Forty Cents) excluding GST.

Contract Extension

Contract 22027 for the Te Matau a Pohe and Kotuitui Whitinga Bridges – Electrical Maintenance 2022 was awarded to McKay Ltd for a price of \$397,430.99 excluding GST on 9 January 2023 following a competitive tender process.

This contract involves the inspection and maintenance of all the electrical and control systems of these bridges. The contract was let with an initial term of 2 years and a potential roll over of another 3 years based on performance. The initial 2 year term expires on 1 December 2024.

A performance appraisal has been undertaken using the Council's PACE evaluation template. Based on this appraisal, the contractors' performance has been assessed as being good with a score of 74%. This is higher than the minimum score of 70% specified in the contract for a contract extension to be considered. Therefore, it is recommended that the contract be extended for a further 36 months (3 years) from 1 December 2024 to 1 December 2027.

If Council approves the roll over as requested, then the predicted final value of Contract 22027 will increase by \$621,879.41 excluding GST. This amount has been assessed based on current schedule rates that have been escalated to reflect inflation over the past two years with minor amendments to reflect agreed changes to the frequency or type of maintenance work being undertaken. This reflects lessons learnt in operating the bridges over the past two years. In addition, this amount includes an allowance for renewals due to the electrical systems now being over 11 years old with some components now reaching the end of their useful life.

Financial Details

Status of approved Council Budget

Approved Budget Source	11116 – Roading Structures – LHB Maintenance & 00213 – Structures Component Replacement – General
Approved Total Budget	\$1,650,000 from 11116 <u>\$710,000 from 00213</u> \$2,360,000 Total
Available Remaining Budget	\$1,679,154

Contract Breakdown

Current Contract Value	\$397,430.99
Total Variation Value	\$621,879.41
New Contract Value	\$1,019,310.40

Contract Variation Detail

Breakdown

Description	Amount
Contractual Term Extension (Roll-Over)	\$621,879.41
Total Variation	\$621,879.41

CON22026

Contract Variation: Te Matau A Pohe and Kotuitui Whitinga Bridge – Hydraulic and Mechanical Maintenance 2022

Chief Executive Approval

That the contract CON22026: Te Matau a Pohe and Kotuitui Whitinga Bridges – Hydraulic and Mechanical Maintenance 2022 with LC Hydraulics Ltd be extended for a further 36 months (3 years) from 1 November 2024 to 1 November 2027 and the contract value be increased by \$636,026.89 to \$950,359.89 (Nine Hundred and Fifty Thousand, Three Hundred and Fifty Nine Dollars and Eighty Nine Cents) excluding GST.

Contract Extension

Contract 22026 for the Te Matau a Pohe and Kotuitui Whitinga Bridges – Hydraulic and Mechanical Maintenance 2022 was awarded to LC Hydraulics Ltd for a price of \$314,333.00 excluding GST on 13 October 2022.

This contract involves the inspection and maintenance of all the hydraulic and mechanical systems of these bridges.

The contract was let with an initial term of 2 years starting on 1 November 2022 and a potential roll over (Separable Portion 2) of another 3 years based on performance (PACE score of greater than 70%). The initial 2 year term expires on 1 November 2024.

A performance appraisal has been undertaken using the Council's PACE evaluation template. Based on this appraisal, the contractors' performance has been assessed as being good with a score of 76%. This is higher than the minimum score of 70% specified in the contract for a contract extension to be considered. Therefore, it is recommended that the contract be extended for a further 36 months (3 years) from 1 November 2024 to 1 November 2027.

If Council approves the roll over as requested, then the predicted final value of Contract 22026 will increase by \$636,026.89 excluding GST. This amount has been assessed based on current schedule rates that have been escalated to reflect inflation over the past two years with minor amendments to reflect agreed changes to the frequency or type of maintenance work being undertaken. This reflects lessons learnt in operating the bridges over the past two years. In addition, this amount includes an allowance for renewals due to the hydraulic and mechanical systems now being over 11 years old with some components now reaching the end of their useful life.

Financial Details

Status of approved Council Budget

Approved Budget Source	11116 – Roading Structures – LHB Maintenance & 00213 – Structures Component Replacement – General
Approved Total Budget	\$1,650,000 from 11116 <u>\$710,000 from 00213</u> \$2,360,000 Total
Available Remaining Budget	\$2,309,274

Contract Breakdown

Current Contract Value	\$314,333.00
Total Variation Value	\$636,026.89
New Contract Value	\$950,359.89

Contract Variation Detail

Breakdown

Description	Amount
Contractual Term Extension (Roll-Over)	\$636,026.89
Total Variation	\$636,026.89

CON24001
Contract Award: Rose St. Bus Hub Stage 2

Chief Executive Approval

The contract for CON24001 be awarded to A-Line Construction Ltd for the tendered sum of \$1,557,909 (One million and five hundred and fifty-seven thousand and nine hundred and nine dollars) excluding GST.

Contract Scope

To construct a new bus terminal which includes.

- Demolition of the existing bus terminal & footpath along Rose Street.
- Renewal of underground services.
- Construction & landscaping of a new bus terminal including new public toilet block (with separately ordered Exeloo unit) & footpath pavement.
- Construction of a new walkway between Rose Street & Vine Street.

Project start date is scheduled for 6th January 2025 with completion planned on 23rd June 2025. This project is 100% externally funded through the Waka Kotahi NZTA.

Financial Details

Approved Annual Plan budget line	Project is funded as part of the Waka Kotahi NZTA - Transport Choices Package
Total budget	\$ 2,960,000
Value already spent	\$714,034
Value committed	\$322,847
Budget remaining	\$ 1,923,119
Contract award value	\$ 1,557,909
Construction contingency (20%)	\$311,582
Budget remaining (required for furnishings)	\$ 53,628.00

Procurement Method

Procurement Type:	<ul style="list-style-type: none"> • PQM - TenderLink Number WDC-1104852 Attribute weighting: <ul style="list-style-type: none"> • Health and safety (Pass/Fail) • Financial viability (Pass/Fail) • Relevant experience (25%) • Relevant skills (10%) • Methodology (15%) • Price (50%)
Tendered Release Date:	04/06/2024
Tender Closed Date:	11/10/2024

Tenders Received and Evaluated

The following tenders were received.

Tenderer	Price
BDX Group Ltd	\$ 2,678,401
Steve Bowling Contracting Ltd	\$ 2,152,252

Robinson Asphalts 1992 Ltd	\$ 1,765,437
A-Line Construction Ltd	\$ 1,557,909
Engineer's Estimate	\$ 1,922,041

The tender evaluation was Price-Quality Method, in accordance with the approved procurement plan. The tender evaluation team consisted of:

- Harsheel Patel
- Tracey Moore
- Gerard Sugrue
- Vanessa Martinovich

Tenders were received and evaluated as follows;

Tenderer	Price	Less all Scheduled Fixed Amounts	Supplier Quality Premium	Adjusted Tender Price (Excl GST)
BDX Group Ltd	\$ 2,678,401	\$0.00	\$0.00	\$ 2,678,401
Steve Bowling Contracting Ltd	\$ 2,152,252	\$0.00	\$ 85,050	\$ 2,067,203
Robinson Asphalts 1992 Ltd	\$ 1,765,437	\$0.00	\$ 108,00	\$ 1,657,437
A-Line Construction Ltd	\$ 1,557,909	\$0.00	\$ 9,720	\$ 1,541,189
Engineer's Estimate	\$ 1,922,041	\$0.00	\$0.00	\$ 1,922,041

There were five notices to tenderers (NTTs) which resolved project discrepancies and clarified any ambivalence in the project requirement. Tenderer's were contacted to clarify provisional sums and tags. These were evaluated and resolved prior to considering the preferred supplier

Four quality tenders were received from reputable local contractors. The following indicates the tender prices against the Engineers Estimate:

Engineer's Estimate (EE)		\$1,922,041			
Supplier	BDX	Steve Bowling	Robinsons Asphalt	A-Line	
Tender Price	2,678,401.47	2,152,252.88	1,765,437.00	1,557,909.36	
% of EE	139.35%	111.98%	91.85%	81.05%	

Project Risks	Mitigation Strategy
<p>NZTA project funding cutoff date is 30/06/25. Therefore, it is imperative that project completion and final payments are concluded prior to this date</p>	<p>The contractor is a reputable supplier with a substantial pool of skilled labour and management resources and can accelerate the programme with a focus on building/facilities completion. The Rose and Vine Street walkway may be reduced in scope or priority, if at risk of jeopardising programme.</p> <p>The programme does include a number of weeks float with a proposed completion date of 23/06/2024.</p>
<p>Material shortage or supplier delays</p>	<p>Programme and prioritise long-lead items and critical elements - seek alternative materials and/or suppliers, if a risk.</p>
<p>Unforeseen site conditions</p>	<p>Allocate time/cost contingencies and seek ways to continue with critical path development while resolving unforeseen conditions. Seek alternative design solutions.</p>
<p>ACM discovery</p>	<p>Comprehensive prestart inspections and site reviews – contractors is an approved asbestos management provider avoiding the requirement to seek alternative suppliers in the event of finding ACMs.</p>
<p>Time delays generally</p>	<p>Weekly site meetings with principal, close progress monitoring, PCG meetings, daily site logs. Real time site reporting through Procore. Time/float contingency.</p>
<p>Budget over runs and unforeseen costs</p>	<p>Allocated contingency</p>
<p>Weather events</p>	<p>Prepare to tent site if required</p>

CON23039

Contract Variation: Nova Scotia Drive Safety Improvements

Chief Executive Approval

The contract value for CON23039: Nova Scotia Drive Safety Improvements with Ventia NZ Ltd be increased by \$164,388.41 to \$705,142.69 (seven hundred and five thousand, one hundred and forty-two dollars and sixty-nine cents) excluding GST.

Contract Scope

The project was to undertake road safety improvements over a 180m section on Nova Scotia Drive at a bend in the road which has a history of motor vehicle incidents.

The physical works to improve this bend included:

- A rehab of the existing road surface and pavements - including improved geometry adding super elevation at the bend,
- Culvert renewals and repairs including new wingwalls on twin 1200mm culverts,
- Water tabling and drain clearing and scour protection in and around an existing waterway,
- The installation of new and the renewal of road safety signage on Nova Scotia Drive,
- Installation of new guardrails.

The original contract was won by Ventia through a competitive tender process in accordance with the Whangarei District Council Procurement Policy.

A contingency of \$60k was allowed for in the contract. The level of additional work required during the project exceeds this contingency.

The variations were approved by the Engineer to Contract. This recommendation is to correct the Contract value to reflect the work undertaken.

Financial Details

Status of approved Council Budget

Approved Budget Source	341 Low Cost Low Risk Safety Improvements
Approved Total Budget	\$3,599,204.00
Available Remaining Budget	\$380,000.00

Sufficient funds are available as a result of under spends on several LCLR projects carried over from the previous financial year.

Contract Breakdown

Current Contract Value	\$540,754.28
Total Variation Value	\$164,388.41
New Contract Value	\$705,142.69

Contract Variation Details

This variation recognises the additional scope included in the contract so that all the work required in the corridor can be done in a single establishment. This additional scope could not have been reasonably foreseen and thus is greater than the contingency allowed for.

Additional scope includes

- The Brynderwyn SH1 closure and detour through Nova Scotia Drive resulted in additional costs e.g. disestablishment and re-establishment, insurances, and escalation costs. It also resulted in additional road pavement failures occurring just outside the project site and it was agreed to include the repairs in the new pavement works. This was undertaken to save money and improve overall outcome for road users.
- During construction, new infrastructure has been exposed which was not evident in pre-construction service checks. This required further service investigation through CCTV and hydro- excavation and this meant that some renewals of this infrastructure were required including additional drainage and earthworks which have been necessary to open drainage paths.

- This portion of Nova Scotia Drive has seen significant slumping over several years in the road pavements which is (in part) why the project improvements were required. Councils' maintenance contractors have been attempting to preserve the road ride by undertaking road levelling (asphalt levelling) the extent of which was not known at the time of design and tendering. This unknown thickened pavement layer was required to be removed during pavement construction to allow a standard road pavement to be constructed and this has meant some significant increases in metal quantities (additional 260m³) across the site claimed by the contractor as a measure and value quantity.
- Adjoining landowners fencing was required to be renewed due to new earthworks levels and additional drainage required.
- Additional scope requirements have resulted in additional working days and have increased traffic management costs whilst the works were completed.

Breakdown

Description	Amount
VO1 Renew existing 600mm diameter pipe and extend new 46m	\$41,067.88
VO2 Dis-establishment costs due to Brynderwyn Detours	\$2,420.00
VO3 Re-establishment costs due to Brynderwyn Detours	\$2,420.00
VO4 Insurance extensions due to disestablishment/re-establishment (9 weeks)	\$3,528.00
VO5 CCTV of existing 600mm culvert and new culverts plus flushing of lines	\$3,428.61
VO6 Additional line marking required during detour period (emergency works)	\$556.72
VO7 Flush and CCTV newly found 300mm culvert in worksite under Nova Scotia Drive (ponding/holding water)	\$3,195.23
VO8 Replace newly found 300mm culvert.	\$16,906.49
VO9 Replace damaged 1500mm manhole riser	\$1,903.10
VO10 Additional headwall (scheduled item)	\$22,595.70
VO11 Additional headwall TTM	\$8,557.45
VO12 Repair alignment of 1200mm twin culvert outlet incl TTM	\$11,462.28
Additional water table clearing requested behind guardrail NTE19	\$3,860.72
Additional excavation works at twin culvert outlet including rock spalls NTE19	\$1,587.82
Additional sealing each end of site, NTE19	\$2,444.96
Additional sealing vehicle crossings NTE19	\$2,659.45
Additional fencing required NTE19	\$1,794.00
Escalation 2.45% (Estimate)	\$9,000.00
Additional pavement each end of site and additional quantities	\$80,000.00
New contingency allowance to complete	\$5,000.00
Total Variations	\$224,388.41

Original Contingency	\$60,000.00
Total Variation \$224,388.41 – \$60,000.00 (original contingency)	\$164,388.41

CON23037 Contract Award: SP2 for CON23037 23/24 Safety Projects
--

Chief Executive Approval

That Separable Portion 2 – Dave Culham crossing for contract CON23037: 23/24 Safety Projects be awarded to WM Construction for the sum of \$439,830.39 (four hundred and thirty nine thousand, eight hundred and thirty dollars, and thirty nine cents) excluding GST, bringing the total awarded value of the contract to \$1,602,195.40 (one million, six hundred and two thousand, one hundred and ninety five dollars, and forty cents).

Separable Portion Scope

To relocate the existing pedestrian crossing and construct associated footpath, kerb and channel and central islands.

Note: Scope has been reduced (including the removal of the raised table portion of the works) from the original tender to match available budgets and conform with Central Government direction.

Financial Details

Approved budget	Low Cost Low Risk \$3,599,204.00
Value already spent and / or committed	\$ 2,130,000.00
Budget remaining	\$ 1,469,204.00
Contract award value (SP2)	\$ 439,830.39

Separable Portion 1 Intersection Control upgrades – awarded & Complete	\$ 179,608.21
Separable Portion 3 High Street Footpath – awarded & complete	\$ 683,823.95
Separable Portion 4 Vine Street Crossing Imp – awarded and complete	\$ 298,932.37

Existing contract value	\$1,162,364.53
New Contract value	\$1,602,195.40

Procurement Method

The project was procured via open tender through Tenderlink and evaluated as Lowest Price Conforming in accordance with WDC and NZTA Waka Kotahi Procurement Manual rules.

Tenders Received and Evaluated

The following tenders were received;

Tenderer	Tender Price (Excl GST)
WM Construction	\$ 1,695,532.87
ACL	\$ 1,921,817.41
Ventia	\$ 2,014,014.40
Downer	\$ 2,244,730.07
Engineer's Estimate	\$1,550,000.00

WM Construction were the lowest price, and their submission was found to be conforming. Their price was only 9% higher than the Engineers Estimate, which is within the margin of error for the estimate and is therefore considered to be reasonable and value for money.

Separable Portions 1, 3 and 4 were awarded in the previous financial year. WM Construction have performed well, and this final Separable Portion is within the total tender price submitted having delivered within budget on the previous three projects.

2 Wastewater

CON24059

Contract Award: Waikaraka Bridge Wastewater Pipeline Replacement Emergency Works

General Manager Approval

That the contract for the Waikaraka Wastewater Pipe Bridge Upgrade (CON24059) be awarded to Northern Drainage Ltd for the tendered sum of \$184,020.30 (one hundred and eighty four thousand and twenty dollars and thirty cents) excluding GST.

Contract Scope

The existing wastewater pipeline aerial crossing at Waikaraka Bridge (Bridge #271; approx. 50m west of Waikaraka Road) along Whangarei Heads Road serves Whangārei Heads and is at risk of failure. The poor condition of the pipe has been exacerbated by a car accident that damaged the pipework and air release valve. Immediate action is required to prevent failure of the wastewater pipeline, and potential wastewater discharges into the Waikaraka Stream and Whangarei Harbour.

Procurement

Typically, Emergency Works are directly awarded to our Operations and Maintenance contractor (TDG) under Contract 16080 where established contract rates already exist.

A quote was received from TDG, however this was over 45% of the Engineer's Estimate which was considered unreasonable and prompted a cost comparison request.

In keeping with our procurement Policy, quotes were sought from a selection of five (5) licenced contractors from the WDC high-risk approved register.

Tenders Received and Evaluated

Three quotes were received and evaluated.

The following quotes were received and tabulated below. TDG's original submission has been included for context.

Contractor	Price Excluding Contingency	Contingency	Total Price including Contingency
TDG original price (21/08/24)	\$332,113.31	\$20,000.00	\$ 352,113.31
TDG second offer following RFQ	\$264,076.98	\$20,000.00	\$ 284,076.98
Northern Drainage Ltd	\$164,020.30	\$20,000.00	\$ 184,020.30
MOD Shoring Ltd	\$193,340.86	\$20,000.00	\$ 213,340.86
Engineers Estimate	\$ 219,520.00	\$ 20,000.00	\$239,520.00

Financial Details

An amount of \$184,020.30 (one hundred and eighty four thousand and twenty dollars and thirty cents) excluding GST is sought for this project which includes a contingency amount of \$20,000.00 (twenty thousand dollars).

The project is funded from the 2024-25 Wastewater Network Renewals budget of \$2,058m (Project ID 01072).

Current commitments against this budget include \$582,000 (five hundred and eighty two thousand dollars) against Project ID 0244. This leaves a balance of \$1,476,000 (one million, four hundred and seventy six thousand dollars) to fund this project.

There is sufficient funding available to award this contract.

3 Planning

CON15028

Contract Variation: Airport Location Options Study Proposed Site Selection

General Manager Approval

The contract value for CON15028 be increased from \$756,160 (seven hundred and fifty six thousand, one hundred and sixty dollars) to \$885,213 (eight hundred and eighty five thousand, two hundred and thirteen dollars) excluding GST by way of Variation request 3 – Meteorological Data Analysis and Variation request 4 – Programme Extension and Engagement Support.

Contract Scope

The Initial Works and Constraints Identification stages are complete, with current focus on the following workstreams:

- Completing five Cultural Values Assessments (CVAs)
- Developing draft concept designs for review
- Developing draft MCA criteria for review
- Reporting on the meteorological data gathering and analysis (Var 3)

The CVA work has drawn out longer than anticipated. The project team have now met with the five hapū groups involved and agreements with each for the completion of the CVA are imminent.

Additional works for Beca include project management, meetings and engagement support over the period where the CVA approach was determined and implemented, then through to new programme end date, as well as additional site visits. Previously engagement support was excluded and to be charged on an ad hoc basis.

It is now expected that no further variations will be required on order to complete this phase 4 of the Airport Location Options Study project.

Financial Details

A breakdown of the estimates for the additional work is provided in the following table:

Item	Variation 3	Amount (excl. GST)
1	Meteorological Data Analysis	\$ 16,709
Item	Variation 4	Amount (excl. GST)
1	Project administration	\$ 20,568
2	Project meetings	\$ 29,485
3	Site visits	\$ 6,438
4	Technical Support for WDC engagement activities	\$ 55,853
	Sub-total	\$112,344
	Total	\$129,053

A breakdown of cost for the whole contract is provided in the following table:

Description	Amount (excl. GST)
Original contract value (excl. contingency)	\$ 705,960
Amount of Variation 1 & 2	\$ 50,200
Amount of Variation 3	\$ 16,709
Amount of Variation 4	\$112,344
Total revised contract value	\$885,213

Description	Amount (excl. GST)
Contract Variance	\$179,253

The budget for this project in the 2023/24 financial year is \$1,022,000. Proposed expenditure this year is within this budgeted amount.

RESOLUTION TO EXCLUDE THE PUBLIC**Move/Second**

That the public be excluded from the following parts of proceedings of this meeting.

The general subject of each matter to be considered while the public is excluded, the reason for passing this resolution in relation to each matter, and the specific grounds under Section 48(1) of the Local Government Official Information and Meetings Act 1987 for the passing of this resolution are as follows:

General subject of each matter to be considered	Reason for passing this resolution in relation to each matter	Ground(s) under Section 48(1) for passing this resolution
1.1 Confidential Minutes Infrastructure Committee Meeting 5 December 2024	Good reason to withhold information exists under Section 7 Local Government Official Information and Meetings Act 1987	Section 48(1)(a)

This resolution is made in reliance on Section 48(1)(a) of the Local Government Official Information and Meetings Act 1987 and the particular interest or interests protected by Section 6 or Section 7 of that Act which would be prejudiced by the holding of the whole or the relevant part of the proceedings of the meeting in public, are as follows:

Item	Grounds	Section
1.1	For the reasons as stated in the open minutes.	

Resolution to allow members of the public to remain

If the committee wishes members of the public to remain during discussion of confidential items the following additional recommendation will need to be passed:

Move/Second

“That _____ be permitted to remain at this meeting, after the public has been excluded, because of his/her/their knowledge of Item _____.

This knowledge, which will be of assistance in relation to the matter to be discussed, is relevant to that matter because _____.