

## Infrastructure Committee Agenda

**Date:** 8 July, 2021

**Time:** 9:00 am

**Location:** Council Chamber  
Forum North, Rust Avenue  
Whangarei

**Elected Members:** Cr Greg Martin (Chairperson)  
Her Worship the Mayor Sheryl Mai  
Cr Gavin Benney  
Cr Vince Cocurullo  
Cr Nicholas Connop  
Cr Ken Couper  
Cr Tricia Cutforth  
Cr Shelley Deeming  
Cr Jayne Golightly  
Cr Phil Halse  
Cr Greg Innes  
Cr Anna Murphy  
Cr Carol Peters  
Cr Simon Reid

For any queries regarding this meeting please contact  
the Whangarei District Council on (09) 430-4200.

<b>1. Declarations of Interest</b>	
<b>2. Apologies</b>	
<b>3. Confirmation of Minutes of Previous Infrastructure Committee Meeting</b>	
3.1. Minutes Infrastructure Committee Meeting 10 June 2021	3
<b>4. Decision Reports</b>	
4.1. Northland Regional Landfill Limited Partnership – Statement of Intent 2021-22	7
<b>5. Information Reports</b>	
5.1. Contracts Approved Under Delegated Authority	19
5.2. Infrastructure Operational Report	27
<b>6. Public Excluded Business</b>	
<b>7. Closure of Meeting</b>	

Recommendations contained in the agenda are not the decisions of the meeting.

Please refer to minutes for resolutions.

## ***Infrastructure Committee – Terms of Reference***

### **Membership**

**Chairperson** Councillor Greg Martin

**Members** Her Worship the Mayor Sheryl Mai  
 Councillors Gavin Benney, Vince Cocurullo, Nicholas Connop, Ken Couper, Tricia Cutforth, Shelley Deeming, Jayne Golightly, Phil Halse, Greg Innes, Anna Murphy, Carol Peters, Simon Reid

**Meetings** Monthly

**Quorum** 7

### **Purpose**

To oversee the management of council's infrastructural assets, utility services and public facilities.

### **Key responsibilities**

- Services including the provision, maintenance and capital investment for:
  - Infrastructure asset management, projects and support
  - Infrastructure project co ordination
  - Transportation
  - Waste and drainage
  - Solid waste, waste minimisation and recycling services
  - Water
  - Parks and reserves
  - Cemetery
  - Laboratory services
  - Flood alleviation schemes
- Reporting on service delivery, including operational financial performance.
- Reporting on capital projects.
- Operational reporting for the Infrastructure group within Council.

- Procurement – general procurement relating to the areas of business of this committee, within delegations.
- Shared Services – investigate opportunities for Shared Services for recommendation to council.
- Council Controlled Organisations (CCOs) – monitoring the financial and non-financial performance of CCOs whose functions would otherwise fall under the scope of this committee. Includes trading CCOs (CCTOs) and those CCOs exempted under the LGA. Responsibilities include:
  - advising on the content of annual Statement of Expectations to CCOs
  - agreement of the Statement of Intent
  - monitoring against the Statement of Intent
  - for exempted CCOs, monitoring and reporting as agreed between Council and the organisation

**CCOs accountable to this committee:**

- Northland Regional Landfill Limited Partnership (NRLLP) – CCTO
- Whangarei Waste Limited (WWL) – exempted CCO

**Delegations**

- (i) All powers necessary to perform the committee's responsibilities, including, but not limited to:
  - a) the approval of expenditure of less than \$20 million plus GST.
  - b) approval of a submission to an external body.
  - c) establishment of working parties or steering groups.
  - d) adoption of strategies and policies relating to the key responsibilities of this committee (except for those that cannot be delegated by Council under Clause 32(1)(f) of Schedule 7 of the LGA).
  - e) power to establish subcommittees and to delegate their powers to that subcommittee.
  - f) the power to adopt the Special Consultative Procedure provided for in Section 83 to 88 of the LGA in respect of matters under its jurisdiction (this allows for setting of fees and bylaw making processes up to but not including adoption).
  - g) the power to delegate any of its powers to any joint committee established for any relevant purpose under clause 32, Schedule 7 of the Local Government Act 2002.

**Item 3.1**
**Infrastructure Committee Meeting Minutes**

**Date:** Thursday, 10 June, 2021  
**Time:** 9:00 a.m.  
**Location:** Council Chamber  
 Forum North, Rust Avenue  
 Whangarei

**In Attendance**
  
 Cr Greg Martin (Chairperson)  
 Her Worship the Mayor Sheryl Mai  
 Cr Gavin Benney  
 Cr Vince Cocurullo  
 Cr Nicholas Connop  
 Cr Ken Couper  
 Cr Tricia Cutforth  
 Cr Shelley Deeming  
 Cr Jayne Golightly  
 Cr Phil Halse  
 Cr Greg Innes  
 Cr Anna Murphy  
 Cr Carol Peters  
 Cr Simon Reid

**Scribe**
  
 C Brindle (Senior Democracy Adviser)

**1. Declarations of Interest**

There were no declarations of interest made.

**2. Apology**

Cr Anna Murphy

**Moved By** Cr Nicholas Connop

**Seconded By** Cr Greg Innes

That the apology be sustained.

**Carried**

**3. Confirmation of Minutes of Previous Infrastructure Committee Meeting**
**3.1 Minutes Infrastructure Committee Meeting held on 13 May 2021**

**Moved By** Cr Phil Halse

**Seconded By** Cr Gavin Benney

That the minutes of the Infrastructure Committee meeting held on Thursday 13 May 2021, having been circulated, be taken as read and now confirmed and adopted as a true and correct record of proceedings of that meeting.

**Carried**

#### **4. Decision Reports**

##### **4.1 Petition for the sealing of Beazley Rd, Pataua South**

**Moved By** Cr Greg Innes

**Seconded By** Cr Jayne Golightly

That the Infrastructure Committee:

1. Receives the petition requesting that seal extension be undertaken and instructs staff to:
  - a. Advise the petition organiser that the request will be considered as part of the 2021/24 Ratepayer Seal Extension Programme.

**Carried**

*Cr Murphy joined the meeting at 9.05am during discussions on Item 4.1.*

*Secretarial Note: An additional signature to the petition was received after the agenda had been circulated. Cr Martin requested this be recorded.*

##### **4.2 Petition for the Sealing of Jobe Rd, Maungakaramea**

**Moved By** Cr Shelley Deeming

**Seconded By** Cr Ken Couper

That the Infrastructure Committee;

1. Receives the petition requesting that seal extension be undertake on Jobe Road and instructs staff to:
  - a. Advise the petition organiser that the request will be considered as part of the 2021/24 Ratepayer Seal Extension Programme.

**Carried**

#### **5. Information Reports**

##### **5.1 Contracts Approved Under Delegated Authority**

**Moved By** Cr Shelley Deeming

**Seconded By** Cr Greg Innes

That the Infrastructure Committee note the Infrastructure contracts awarded under Chief Executive and General Manager delegated authority.

**Carried**

## **5.2 Infrastructure Operational Report**

**Moved By** Cr Vince Cocurullo

**Seconded By** Cr Tricia Cutforth

That the Infrastructure Committee notes the Infrastructure Operational Report update.

**Carried**

## **6. Public Excluded Business**

There was no business conducted in public excluded.

## **7. Closure of Meeting**

The meeting concluded at 10.09am.

Confirmed this 8<sup>th</sup> day of July 2021

Councillor Greg Martin (Chairperson)





## 4.1 Northland Regional Landfill Limited Partnership – Statement of Intent 2021-22

**Meeting:** Infrastructure Committee  
**Date of meeting:** 8 July 2021  
**Reporting officer:** David Lindsay – Solid Waste Engineer

### 1 Purpose

To agree to the Northland Regional Landfill Limited Partnership (NRLLP) Statement of Intent in accordance with the Local Government Act 2002.

### 2 Recommendation

That the Infrastructure Committee agree to the Northland Regional Landfill Limited Partnership Statement of Intent 2020-2021.

### 3 Background

The Statement of Intent (SOI) has been reviewed for appropriateness in relation to the delivery of services, management and governance of NRLLP and obligations to meet Section 64, and Schedule 8, of the Local Government Act 2002 (LGA). The NRLLP SOI is included as Attachment 1.

NRLLP's SOI includes 'high level' performance targets. More detailed and specific targets are set and monitored within the entity through its annual Business Plan. These are not included in this SOI as section 71 of the LGA permits information to be withheld that could be withheld under the Local Government Official Information and Meetings Act 1987 (LGOIMA). NRLLP specifically relies on section 7(2)(h).

Note: Alan Adcock, General Manager – Corporate, has a governance relationship with NRLLP as a Director on behalf of Whangarei District Council. Any potential conflicts of interest this causes are dealt with as circumstances dictate.

### 4 Significance and engagement

The decisions or matters of this agenda do not trigger the significance criteria outlined in Council's Significance and Engagement Policy, and the public will be informed via agenda publication on the website.

### 5 Attachment

Northland Regional Landfill Limited Partnership –Statement of Intent and Business Plan 2021-22.



# Northland Regional Landfill Limited Partnership Final Statement of Intent and Business Plan 2021/22

## **A. Final Statement of Intent**

### **A.1 Introduction**

Following a competitive process seeking requests for proposals, NRLLP was formed on 2 July 2009 and purchased the consented Puwera landfill site and Re-Sort resource recovery park from Whangarei District Council (WDC).

The Northland Regional Landfill Limited Partnership (NRLLP) comprises two limited partners; Whangarei District Council (WDC) and Northland Waste Limited (NWL).

The General Partner is Whangarei Waste Limited (WWL).

The operation is governed by a joint venture agreement under which neither party has absolute control of the organisation but is deemed a Council Controlled Trading Organisation (CCTO) by virtue of the Local Government Act (LGA).

### **A.2 Purpose of the Statement of Intent**

This statement of intent is prepared in accordance with section 64 of the Local Government Act 2002 (LGA). It outlines the activities and intentions of NRLLP for the next three financial years, and the objectives to which those activities will contribute. It provides a basis for which the General Partner can be held accountable to the Limited Partners for the performance of the organisation.

### **A.3 Purpose of the Organisation**

NRLLP is a for-profit entity operating as a best practice business financially, environmentally, socially and culturally.

The overarching purpose of NRLLP is to operate the Puwera landfill and ReSort RRP and to provide waste disposal facilities in the Whangarei District.

### **A.4 Nature and Scope of Activities**

The activities that NRLLP provides currently includes the following:

- Own and operate Puwera Landfill
- Own, operate and manage ReSort RRP
- Haulage of conforming waste from ReSort to Puwera
- Provide for post closure responsibilities for Puwera
- Conduct waste diversion and recycling and green waste separation

#### **A.4.1 Vision**

To operate competitive waste disposal facilities to provide for the needs of Northland, and the North Auckland Region; undertaking waste diversion and recycling where economically viable; achieve Partner's financial return requirements; and pursuing business growth opportunities where appropriate.

#### **A.4.2 Community Outcome Support**

NRLLP will operate to meet reasonable community expectations, and as supported by the WDC vision, where this is acceptable to both Shareholders/Limited Partners and does not impact on primary objectives or existing agreements.

#### **A.4.3 Additional Legislation**

The partnership is constituted under the Limited Partnership Act 2008 and is governed by the limited partnership agreement dated 30 June 2009 which may be amended from time to time by agreement between the partners.

The management of the partnership is undertaken by WWL, a company registered under the Companies Act 1993.

#### **A.5 Approach to Governance**

##### **A.5.1 Structure**

NRLLP is a council-controlled trading organisation as defined by section 6 of the LGA and is a 50/50 partnership between the two limited partners WDC and NWL.

The operation is governed by a limited partnership agreement.

The general partner, WWL, is jointly owned by WDC (Group A shares) and NWL (Group B shares). The company is governed by four directors, two group A directors and two group B directors appointed by the respective shareholders. No remuneration is paid by the company to the directors, the shareholders will pay the directors appointed by them as they see fit. A quorum consists of one group A director and one group B director.

##### **A.5.2 Associated Interests of Partners**

The parties have additional interests that are associated with the partnership.

#### **Whangarei District Council**

WDC funds domestic rubbish collections and rural transfer station services in the Whangarei District. WDC will continue to provide these services into the future. All the waste tonnage is committed to the Puwera Landfill.

WDC have agreed to structure their tenders for domestic collections of refuse and recycling and rural transfer sites in a manner which ensures long term protections of the waste and recycling stream for the benefit of Puwera Landfill

WDC awarded the Whangarei District solid waste collection and recycling collection contracts to NWL, following a competitive tender process. The contracts run from 1 July 2018 for a 5+2+2 term.

WDC utilise the services of their Solid Waste Engineer to the Partnership and carries out various tasks to assist the development of the landfill and its operations.

#### **Northland Waste Ltd**

Northland Waste Ltd and associated companies have an obligation to deposit waste they collect in the Northland area into Puwera. There is also an obligation to deposit any North Auckland tonnes at Puwera provided; it is logistically possible; the Puwera Landfill charge plus transportation costs is equal to, or less than, charges and transportation to a competing landfill; and there are no commercial issues as a result of the NWL Auckland Council contract. NWL may also enter into tonnage swap agreements where this economically beneficial to them.

Quay Contracting Limited, a subsidiary of Northland Waste Ltd, carry out cell construction at the landfill for the Limited Partnership. Under a management agreement they also manage: ReSort operations; landfill operations; and provide administration and accounting services. Their services are provided at market rates.

Northland Waste Ltd and associates are active on their own account in all aspects of the waste collection stream prior to delivery to Puwera/ReSort.

#### **A.5.3 Advisory Committee**

The NRLLP Advisory committee function is to review any conflicts of interest, consult with WWL, and to be updated on the business affairs of NRLLP. The committee includes:

- Vince Cocurullo – appointed by WDC
- Shelley Deeming – appointed by WDC
- Warwick Syers – appointed by NWL
- Raymond Lambert – appointed by NWL

#### **A.5.4 Board of Directors**

The WWL board of directors meet monthly to govern the management of the partnership, the board includes:

- Gregory Martin – appointed by WDC
- Alan Adcock – appointed by WDC
- Warwick Syers – appointed by NWL
- Raymond Lambert – appointed by NWL

### **A.6 Goals/Objectives 2021/22**

The long-term objectives of the partnership are set out in the partnership agreement and are included in Appendix 1 of this document.

Specific major focus for years ended 30 June 2022, 2023 and 2024:

- Operate and manage ReSort RRP and Puwera landfill in accordance with the management agreement and consents
- Diverting re-usable and recyclable material from ReSort general waste stream where financially viable
- Manage the financial aspects of the organisation to ensure a satisfactory annual distribution to the partners
- Continue development of the fifth cell construction stage at the landfill and ensure a minimum of six months capacity is always available
- Investigate options to future proof the landfill
- Pursue technologies to utilise the landfill gas flows and provide back up for the flare

### **A.7 Performance Targets and Measures**

The following measures apply for each of years ended 30 June 2022, 2023 and 2024:

- To open both the Puwera Landfill and Re-Sort facilities for a minimum of 40 hours each week
- Achieve no notifiable health and safety incidents (as defined by Worksafe NZ) occurring at all operational sites owned by NRLLP
- Ensure Resort facilitates a minimum of 40% diversion away from landfill of all material being handled through the site
- Maintain compaction of 0.7 tonnes of placed refuse per cubic metre of airspace used
- Ensure 6 months landfill capacity is maintained at all times
- Achieve a minimum of 70% landfill gas destruction

### **A.8 Information to be Provided Throughout the Financial Year**

Due to the commercial sensitivity of the business operations financial information is strictly confidential and only available to management of both WDC and NWL

#### **A.8.1 Half-yearly Report**

The half-yearly report will be provided to the management of the shareholders/limited partners within 2 months of the first half of the financial year ending (28 February 2022). It will include:

- A comparison of performance against the performance targets and measures set out in the statement of intent.
- Un-audited financial statements including a statement of financial position, statement of financial performance and statement of movements in equity.

#### **A.8.2 Annual Report**

The annual report will be provided to the management of the shareholders/limited partners within 3 months of the financial year ending 30 September 2022. The annual report will include all the information necessary to enable an informed assessment of operations, including:

- Audited financial statements for the financial year including; a statement of financial position, a statement of comprehensive income, a statement of changes in equity, a statement of cash flows and notes to the financial statements.
- A comparison of the performance targets and measures outlined in this statement of intent, and the actual performance of NRLLP for the financial year.
- Any material variances from the expected performance of NRLLP, and explanations for those variances.
- An independent auditor's report on the financial statements and the performance targets and other measures by which NRLLP's performance against its objectives may be judged.
- Other statements as may be necessary to fairly reflect the financial position of the Company, the resources available, and the financial results of the operations.

### **A.8.3 Annual Financial Estimates**

Annual financial estimates (budgets) for operational activities and capital expenditure to be provided to the management of the shareholders/limited partners.

### **A.8.4 Annual Draft SOI**

The Annual Draft SOI (Statement of Intent) shall be sent to the WDC and to NWL no later than 28 February each year.

### **A.8.5 No Surprises Approach**

To ensure there is timely notification of any major issues, NRLLP commits to a no surprises approach beyond the formal reporting requirements. This means that WWL will immediately communicate, by email, any issues that may trigger public interest, have political implications, or gain significant media attention to the Advisory Committee and to both shareholders/limited partners.

### **A.9 Compensation Sought or Obtained**

It is expected there will be no activities for which the board will seek compensation.

### **A.10 Procedures in Relation to Acquiring Shares**

Partners will not acquire shares in any other similar organisation within the operating area without the prior written agreement of both joint venture partners. It is acknowledged that NWL and associated companies operate waste collection and disposal services throughout New Zealand.

### **A.11 Ratio of Consolidated Partners Funds to Total Assets**

Partners' funds mean partners' capital accounts, partners current accounts and reserves. Total assets mean the book value of all assets of the partnership. The ratio of partners funds to total assets at 30 June 2020 was 55.7% (2019: 53.7%).

### **A.12 Accumulated Profits and Capital Reserves**

All profits are allocated to partners current accounts effective balance date and distributions to partners are deducted from partners current accounts. Unrealised capital gains are held in revaluation reserve and classified as equity. The proportion of undistributed accumulated profits (retained earnings) and capital reserves that were distributed to partners at 30 June 2020 was 23.5% (2019: 24.5%). Distributions are determined from residual free cash flows available after meeting capex costs like cell construction costs and maintaining borrowings as agreed by Directors policies.

### **A.13 Estimate of the Commercial Value of the Partners Investment**

It is not proposed to seek an independent assessment of the commercial value of the entity.

### **A.14 Forecast Financial Statements**

Under the LGA council-controlled organisations that are not trading organisations are required to include forecast financial statements.

NRLLP is a trading organisation, and prospective financial statements are not included due to the commercial sensitivity of the business.

## **B. Business Plan 2021/22**

### ***B.1 Activities, Vision and Goals/Objectives***

These are outlined in items 4 and 6 above

### ***B.2 Governance/Management***

The NRL Limited Partnership Agreement, Whangarei Waste Ltd Constitution and the WWL / NRLLP Shareholders/Limited Partners Agreement establish the constitutional rules of the entities.

Whangarei Waste Ltd is the general partner of the NRLLP. The WWL Board of Directors are the governance body of NRLLP.

The NRLLP Advisory Committee is to be consulted by the General Partner from time to time, to review any conflicts of interest and to be updated on the Limited Partnership's affairs.

Quay Contracting Ltd is the operations manager of Puwera Landfill and ReSort acting on their own account and responsible for all day to day operations, staffing and supply of plant and vehicles. They are remunerated in accordance with a management agreement. Quay Contracting also provide administration and accounting services

### ***B.3 Budget 2021/22***

The Budget is a component of this Business Plan and will be approved by the General Partner prior to 31 July but is not available with the Business Plan because of commercial sensitivity.

### ***B.4 NRLLP Philosophy***

- Operate a best practice business environmentally, financially, socially and culturally.
- Respect the individual requirements of the Partners as far as practical (e.g. Political Influence from Council and competitive market pressure for NWL)

### ***B.5 Governance Review***

Directors address governance issues with a Governance Plan and Legislative Compliance Checklist which are revisited biannually and are recorded in minutes. A Governance Health and Safety Checklist is completed annually.

**Appendix 1:** Long Term Objectives for the Limited Partnership

**Appendix 2:** Statement of Accounting Policies



## ***Appendix 1***

### **Extract from WWL NRLLP Shareholders/Limited Partnership Agreement dated 30 June 2009**

#### **Long Term Objectives for the Limited Partnership**

The objectives of the Limited Partnership are to:

- (a) Develop and operate the Puwera Landfill so that it is capable of serving the Waste disposal needs of the Shareholders and the Partners to the Limited Partnership and the Northland Region and providing competitive Waste disposal services to third party Waste operators and other local authorities within the Operating Area in an environmentally sound and economically efficient manner and in accordance with all relevant resource consents.
- (b) Operate as a successful business including achieving sufficient earnings to support the continued operations of the Limited Partnership and to achieve an appropriate risk adjusted return on investment.
- (c) Manage the Waste stream so enough Waste is secured to ensure that the Landfill is operated to its commercial advantage taking into account the benefits of maximising the life of the Landfill and financial return to the Shareholders and the Partners to the Limited Partnership.
- (d) Ensure construction and operation of the Landfill is undertaken in such a manner as to maximise the life of the Landfill, both for Stage One of the Landfill as contemplated by the existing resource consents and for any future stages.
- (e) Operate the ReSort:RRP as a transfer station to serve the needs of the Whangarei District in an environmentally sound and economically efficient manner and in so doing ensure that current levels of service, including services such as Hazardous Wastes collection and vegetation separation, are maintained with operations to be undertaken using the best practicable option.
- (f) Promote Waste Minimisation where it is financially viable to do so.
- (g) Be responsive to the market demand for its services in terms of the criteria of quantity, quality and price.
- (h) Develop business plans consistent with WDC's Waste Management and Minimisation Plan and all relevant statutory and regulatory obligations.
- (i) Behave in an environmentally sustainable manner by promoting and maintaining the standards of environmental protection applied by the RMA and to minimise the impact of its activities on the environment.
- (j) Comply with relevant provisions of the LGA applying to a CCTO.
- (k) Promote and maintain standards of health and safety in accordance with all applicable statutes and regulations, and including best practice.
- (l) Act as a good employer and effectively manage staff.
- (m) Commit to consult with and be sensitive to the concerns of the Landfill and ReSort:RRP host communities.
- (n) Act as a good corporate citizen with regard to its business dealings and relations with key stakeholders and tangata whenua and the Northland community.
- (o) Be customer focussed and ensure good customer relationships and service provision.
- (p) Enter into and manage procurement contracts to deliver the Limited Partnership's services.
- (q) Maximise long run economic and environmental benefits to key stakeholders.

## ***Appendix 2: Statement of Accounting Policies***

### **Reporting Entity**

Northland Regional Landfill Limited Liability Partnership (the Partnership) is a joint venture between Whangarei District Council and Northland Waste Limited as limited partners and Whangarei Waste Limited as a general partner.

The Partnership is domiciled in New Zealand and is a council-controlled trading organisation as defined under section 6 of the Local Government Act 2002, by virtue of Council's right to appoint 50% of the directors to the Board and the corresponding voting rights controlled by Council.

The primary objective of the Partnership is to provide waste facilities in the Whangarei District.

The entity's owners and others have no power to amend the financial statements after issue.

### **Basis of preparation**

#### **Statement of compliance**

The financial statements of the Partnership have been prepared in accordance with the requirements of the Local Government Act 2002, which includes the requirement to comply with generally accepted practice in New Zealand (NZ GAAP). The partnership is a Tier 2 RDR (Reduced Disclosure Regime) reporting entity by virtue of not being publicly accountable and has expenses of less than \$30 million.

The financial statements comply with NZ IFRS (International Financial Reporting Standards) RDR and other applicable Financial Reporting Standards, as appropriate for profit oriented entities.

#### **Measurement base**

The financial statements have been prepared on a historical cost basis.

#### **Functional and presentation currency**

The financial statements are presented in New Zealand dollars and all values are rounded to the nearest thousand dollars. The functional currency of the Partnership is New Zealand dollars (NZ\$).

#### **Changes in accounting policies**

There have been no changes in accounting policies during the year.

#### **Goods and services tax**

All items in the financial statements are presented exclusive of goods and service tax (GST), except for receivables and payables, which are presented on a GST-inclusive basis. Where GST is not recoverable as input tax, it is recognised as part of the related asset or expense. The net amount of GST recoverable from, or payable to, the IRD is included as part of receivables or payables in the statement of financial position.

The net GST paid or, or received from the IRD, including the GST relating to investing and financing activities, is classified as a net operating cash flow in the statement of cash flows. Any commitments and contingencies are disclosed exclusive of GST.

#### **Income tax**

The Partnership incurs no taxation expense of tax liability. Taxation Surplus or Loss is borne by each partner according to profit share arrangements.

Any withholding tax or imputation credits arising from investment income are taken to the respective partners Current Accounts.

#### **Equity**

Equity is measured as capital contributions of the Partners; the Current Accounts of the Partners to the extent that they have not been authorised for distribution in the next financial

year; and Revaluation Reserves.

**Segment reporting**

The Partnership operates in one business segment, waste disposal, and in one geographical segment, Northland.

**Critical accounting estimates and assumptions**

In preparing these financial statements, the Partnership has made estimates and assumptions concerning the future.

These estimates and assumptions may differ from the subsequent actual results. Estimates and assumptions are continually evaluated and are based on historical experience and other factors, including expectations of future events that are believed to be reasonable under the circumstances. The estimates and assumptions that have a significant risk of causing a material adjustment to the carrying amounts of assets and liabilities within the next financial year are:

- Aftercare provisioning
- Cell construction



## 5.1 Contracts Approved Under Delegated Authority

**Meeting:** Infrastructure Committee  
**Date of meeting:** 08 July 2021  
**Reporting officer:** Simon Weston (General Manager Infrastructure)

### 1 Purpose

For the Infrastructure Committee to note Infrastructure contracts awarded under Chief Executive and General Manager delegated authority.

### 2 Recommendation

That the Infrastructure Committee note the Infrastructure contracts awarded under Chief Executive and General Manager delegated authority.

### 3 Background

Table 1 (below) records Infrastructure contracts awarded under Chief Executive and General Manager delegated authority. Attachment 1 provides a summary of the award process for each contract and a brief description of the works being undertaken

**Table 1: Infrastructure Contracts Awarded Under Delegated Authority**

<b>1. Parks and Recreation</b>	
CON20065	Waipu Skatepark Construction
CON20070	Contract Variation: Abbey Caves New Car Park
CON21014	Pyle Road West Seawall Renewal
<b>2. Waste and Drainage</b>	
CON21007	Kauika Road Sewer Diversion

### 4 Significance and engagement

The decisions or matters of this Agenda do not trigger the significance criteria outlined in Council's Significance and Engagement Policy, and the public will be informed via Agenda publication on the website.

## **5 Attachment**

1. Summary of Contracts Approved Under Delegated Authority July 2021

## Summary of Contracts Approved Under Delegated Authority

This attachment provides a summary of the award process and works being undertaken for Infrastructure contracts awarded under Chief Executive and General Manager delegated authority.

### 1.0 Parks and Recreation

CON20065 Waipu Skatepark Construction
--

#### Introduction

CON20065 is for the construction of a new skatepark at Waihoihoi River Park in Waipu. Rich Landscapes, a skatepark specialist, was engaged to undertake consultation, design and provide an Engineer's estimate. The Waipu Activity Zone community group have been actively campaigning for this project and have organised additional funding through the Lions for \$17,391.30 excluding GST. Construction is scheduled for October 2021.

#### Procurement Process

A variation to policy was approved to receive quotes from two suppliers who have recently completed skatepark construction work in Whangarei. These suppliers have a good track record in skatepark delivery and the necessary skills to construct this project.

#### Tenders Received and Evaluated

The contract was privately listed on tenderlink and closed on 13<sup>th</sup> April 2021.

The tender evaluation was lowest price conforming. The lowest price tender was from Steve Bowling Contracting Limited. This tender was checked, after acceptance and removal of the tender tags, it was found to conform.

<i><b>Tenderer</b></i>	<i><b>Price (Excl GST)</b></i>
Steve Bowling Contracting Limited	\$234,685.81
Robinson Asphalts 1992 Limited	\$240,608.62
Engineer's Estimate	\$190,034.60

#### Financial

From the 20/21 financial year \$100,000.00 for new skateparks shall be carried forward into the 21/22 financial year. In the 21/22 financial year \$50,000.00 is available for new skateparks, and \$40,000.00 will be bought forward from the 22/23 financial year. In addition, the Lions have given \$17,391.30 excluding GST to the project. The total budget available is \$207,391.30. This leaves a shortfall of \$27,294.51.

This funding shortfall will be an overspend, where possible savings from other projects will be used to reduce the overspend.

<i><b>Budget Source</b></i>	<i><b>Budget</b></i>
20/21 financial year carry forward	\$100,000.00

21/22 financial year	\$50,000.00
22/23 financial year bought forward	\$40,000.00
Lions funding	\$17,391.30
Total budget	\$207,391.30
Total shortfall	\$27,294.51

### General Manager Approval

The contract for Waipu Skatepark Construction (CON20065) be awarded to Steve Bowling Contracting Limited for the tendered sum of \$234,685.81 (Two hundred and thirty four thousand, six hundred and eighty five dollars, and eighty one cents) excluding GST.

CON20070 Contract Variation: Abbey Caves New Car Park
--

### Purpose

Approval is sought to increase the original contract price by \$113,967.89 from \$698,580.07 to \$812,547.96 excluding GST.

### Background

This contract is for construction of a new car park along Abbey Caves Road, Whangarei for visitors of the caves and Parihaka mountain bike tracks. It was awarded to EarthworX Civil & Rural Contractors Ltd. The original contract amount was \$698,580.07 excluding GST.

While a small 7% contingency sum of \$45,000.00 excluding GST was allowed, this was exceeded due to a change in scope as follows:

1. The installation of the toilet was brought forward. It is more cost efficient to get the construction of the effluent disposal field done by the main earthworks contractor.
2. The volume of unsuitable material to be dug out and disposed off-site was greater than anticipated and additional drainage needed to be installed to divert water from an unknown spring away from the car park area.
3. During tender negotiations the material for the walkway between the new car park and the entrance to the Abbey Caves walking track was changed from concrete to metal (GAP20). An error was subsequently made in the schedule of quantities, and the quantity of metal was not increased to make up for the concrete volume taken out.
4. To improve sight lines at the exit of the carpark it was decided to cut back parts of the steep bank along Abbey Caves Road adjacent to the entrance.

### Financial

A breakdown of the additional costs is provided in the following table:

Item	Variation	Amount (excl. GST)
1.	Construction of effluent field including earthworks, pipework and fencing	\$63,794.66
2.	Additional earthworks, import of quarry run and installation of drainage	\$71,269.44
3.	Additional metal required for construction of walkway	\$6,520.50
4.	Cut to waste to improve sightlines	\$17,383.29
	Total Amount of Variations	\$158,967.89

A breakdown of cost for the whole contract is provided in the following table:



<i>Description</i>	<i>Amount (excl. GST)</i>
Original contract value (excl. contingency)	\$653,580.07
Contingency	\$45,000.00
<b>Total original contract value</b>	<b>\$698,580.07</b>
Total amount of these variations	\$158,967.89
<b>Total revised contract value</b>	<b>\$812,547.96</b>
<b>Contract Variance</b>	<b>\$113,967.89</b>

This is a project that will receive 50% subsidy from the Tourism Infrastructure Fund up to \$520,000.00. Funds are available in FY2020/21 and 21/22 for a number of elements such as track renewal, signage and public toilet budgets.

This leaves a shortfall of \$137.5k which will be funded from savings from the Cobham car park project. This project is expected to have around \$150,000.00 savings with only \$140,000.00 required for this project.

Please refer to the following table for a breakdown of funding sources and costs.

<i>Description</i>	<i>Amount (excl. GST)</i>
Revised Contract Amount	<b>\$812,547.96</b>
Abbey Caves signage	\$30,000.00
Track realignment	\$10,000.00
Estimate for toilets	\$190,000.00
Subtotal Project Cost	<b>\$1,042,547.96</b>
TIF will fund 50%	\$520,000.00

<i>Budget</i>	<i>Amount (excl. GST)</i>
Abbey Caves car park budget FY 2020/21	\$130,000.00
TIF	\$520,000.00
Signage budget 21/22	\$30,000.00
Track renewal 21/22	\$10,000.00
Public Toilets 2020/21	\$180,000.00
Public Toilets 21/22	\$35,000.00
Savings from Cobham car park construction	\$140,000.00
Subtotal	<b>\$1,045,000.00</b>
Total project costs	\$1,042,547.96
Available budget	\$1,045,000.00
Excess	\$2,452.04

### **Chief Executive Approval**

It is recommended that the total contract amount of CON20070 for Abbey Caves New Car Park is increased by \$113,967.89 from \$698,580.07 to \$812,547.96 (Eight hundred and twelve thousand, five hundred and forty-seven dollars and ninety-six cents) excluding GST.

CON21014  
Pyle Road West Seawall Renewal

### **Introduction**

This Contract is for the removal of approximately 430m of existing timber seawall, construction of a new rock revetment seawall, extension and refurbishment of existing boat ramps. One at the end of Pyle Road West and another 130m along the seawall, constructing a pedestrian access ramp onto the adjacent esplanade reserve from Pyle Road West Road, and minor upgrade works to two stormwater culverts.

### **Procurement Process**

The procurement process fully complied with the requirements of WDC's Procurement Policy and was undertaken in accordance with the approved procurement plan dated 24 September 2020.

The contract was publicly advertised on Tenderlink and closed on Tuesday 20 April 2021.

The evaluation process was lowest price conforming.

### **Tenders Received and Evaluated**

When the tender closed the following submissions were received:

<b><i>Tenderer</i></b>	<b><i>Price (excl. GST)</i></b>
Clements Contractors Ltd	\$ 869,634.72
Donovan Drainage & Earthmoving	\$ 884,114.00
EarthworX Rural & Civil Ltd	\$ 598,705.04
Mason Contractors Ltd	\$ 1,147,786.00
MDL Civil	\$ 1,038,655.30
United Civil Construction Ltd	\$ 856,420.56
Ventia NZ Operations (former Broadspectrum NZ Ltd)	\$ 598,138.70
Engineer's Estimate	\$ 946,810.20

Ventia submitted the lowest price conforming tender. An arithmetic check was undertaken and no omissions found.

### **Financial**

The stormwater portion of the project with a value of \$9,174.72 (excluding GST) will be paid out of Stormwater Renewals PJ 00590.

The remainder of the project (value \$588,963.98) will be paid out of One Tree Point Seawall PJ00067 which has a budget of \$780,000.00 in the 2020/21 financial year. The majority of this will be carried over into next financial year.

### **Chief Executive Approval**

The contract for CON21014 Pyle Road West Seawall Renewal be awarded to Ventia NZ Operations Limited for the tendered sum of \$598,138.70 (Five hundred and ninety-eight thousand, one hundred and thirty-eight dollars and seventy cents) excluding GST.

## 2.0 Waste and Drainage

### CON21007 Kauika Road Sewer Diversion

#### Introduction

Whangarei District Council has identified a project to upgrade sewer lines at Kauika Road following reports of sewer surcharging at properties along Kauika Rd during wet weather events. Prior to this planned upgrade (early 2020), Waste and Drainage completed inspections of properties within the Woodhill sewer catchment to identify and fix any illegal stormwater connections via house gully traps and downpipes. This project involves diversion of the Kauika sewer catchment down First Ave and upsizing the downstream lines through Carruth Park to Maunu Rd. The scope of work is comprised of constructing approximately 600 meters of 225mm-300mm gravity sewer lines including an aerial crossing and 6 manholes.

#### Procurement Process

The tender was publicly advertised on [www.tenderlink.com](http://www.tenderlink.com) and closed on 25<sup>th</sup> May 2021.

The tenders were evaluated using Lowest Price Conforming (LPC) method and in general accordance with the New Zealand Transport Agency Procurement Manual.

#### Tenders Received and Evaluated

The tenders were submitted using the Tenderlink portal. The following two (2) tenders were received:

<i>Tenderer</i>	<i>United Civil Construction Ltd</i>	<i>CDS Ltd</i>	<i>Engineers Estimate</i>
Tendered Price (\$)	1,028,750.18	1,266,669.00	600,185.00
Tender Adjustment (\$)	31,433.04	-	-
<b>Adjusted Tender Price (\$)</b>	<b>997,317.14</b>	<b>1,266,669.00</b>	<b>600,185.00</b>

*Note: All prices exclude GST.*

The Pricing Schedule which was supplied with the tender documents contained an anomaly which was a double up of a scheduled item. CDS identified the error and removed the double up prior to submitting their pricing. To correct this error, the duplicated item was deleted from the pricing submitted by United Civil as shown on the table above. Both Tenders were re-checked, and no other arithmetic errors were found. United Civil were asked to confirm that they accept the tender adjustment, which they did via the email dated 3<sup>rd</sup> May 2021.

Based on the given tender prices, United Civil Construction offered the lowest price allowing it to progress to the next stage of the evaluation. The tender contained several tags which all were resolved during the evaluation process. The tags were either accepted or rejected and United Civil Construction resolved to remove them from the tender.

United Civil Construction's tender was assessed for the non-price attributes based on pass/fail criteria as prescribed in the tender documents. Their tender was considered to have satisfied the minimum requirements of the tender.

United Civil Construction's tender is therefore considered the lowest price conforming and recommended for award.

United Civil Construction's Tender is considered competitive given the high level of risks, reinstatement and traffic management associated with the work. Trenchless installation work is also subcontracted which is reflected in the prices.

#### Financial

This project (PJ00653) is partly funded by the DIA's Three Waters up to the value of \$500,000.00. The balance of approximately \$500,000.00 will be funded under the Sewer Network Renewal budget (LTP

Indicator 218) which has a total budget of \$1,000,000.00 in the 2021-22 financial year. Construction is expected to start in September 2021 and be completed by January 2022 in line with the DIA's funding completion date.

### ***Chief Executive Approval***

The contract for Kauika Road Sewer Diversion (CON21007) be awarded to United Civil Construction Ltd for the adjusted tender sum of \$997,317.14 (Nine hundred and ninety seven thousand, three hundred and seventeen dollars and fourteen cents) excluding GST.

## 5.2 Infrastructure Operational Report

**Meeting:** Infrastructure Committee  
**Date of meeting:** 8 July 2021  
**Reporting officer:** Simon Weston (General Manager Infrastructure)

### 1 Purpose

To provide a brief overview of work occurring in the current financial year, across services that the Infrastructure Committee is responsible for.

### 2 Recommendation

That the Infrastructure Committee notes the Infrastructure Operational Report update.

### 3 Background

In November 2019, Council adopted committee terms of reference for the 2019 – 2022 triennium, with the purpose of the Infrastructure Committee being to ‘oversee the management of council’s infrastructural assets, utility services and public facilities’.

This report provides the Committee with a summary of Infrastructure operations during May - June 2021.

### 4 Significance and engagement

The decisions or matters of this Agenda do not trigger the significance criteria outlined in Council’s Significance and Engagement Policy, and the public will be informed via Agenda publication on the website.

### 5 Attachment

Infrastructure Operational Report – May 2021



***Infrastructure Group***

***Monthly Operational Report***

**May 2021**

## ***Infrastructure Monthly Operational Report***

Reporting Officer: Simon Weston (General Manager Infrastructure)

Date: July 2021

<b><i>Contents</i></b>	<b><i>Page Number</i></b>
Projects Overview.....	3
Infrastructure Planning & Capital Works.....	7
Infrastructure Development.....	7
Health and Safety.....	9
Waste and Drainage.....	10
Roading - Transportation.....	15
Parks, Recreation and Solid Waste.....	20
Water Services.....	25
Customer Request Management Services (CRMs).....	27



## Projects Overview

### Infrastructure Planning & Capital Works

Planning & Capital Works Projects	Current Stage	Estimated Construction Start Date	Estimated Completion Date	RAG Status
<b>Major Projects - Sense of Place</b>				
<b>New Town Basin Park</b>	Construction	Oct-20	Dec-21	
Water feature, hard landscaping, lighting and toilets are in progress. Trigg have moved their site fence.				
<b>Town Basin Wharf &amp; Boardwalk Renewals</b>	Construction	Jan-21	Oct-21	
Piling, seawall, beams complete. Retaining walls, stairs, steel and timber structure to follow.				
<b>Ball Clock (3<sup>rd</sup> party project)</b>	Construction	Aug-20	Jul-21	
Off-site fabrication nearing completion. Work on foundations underway.				
<b>Town Basin Bus Facilities Upgrade</b>	Design	Jun-21	Sep-22	
Landscape design 75%, scope and materials review to meet budget.				
<b>Pohe Island Destination Playground &amp; Public Toilets</b>	Construction	May-21	Feb-22	
Earthworks being completed while weather still dry.				
<b>Pohe Island Master Services Installation</b>	Construction	May-21	Aug-21	
New watermain, power cables and new connection for toilets installed. Rising main installation has begun.				
<b>Tamaterau Carparks Upgrade (TIF funded)</b>	Design & Consenting	Oct-21	Jan-22	
Discussions with hapū on next the steps have begun. Layby area to be constructed first.				
<b>Restoring the Mauri of Matapōuri Stg 1 (TIF funded)</b>	Investigation & Design	Oct-19	Nov-21	
Recycling & rubbish facilities installed. Investigating toilet options. Dune protection at estuary complete.				
<b>Abbey Caves Car Park &amp; Public Toilets (TIF funded)</b>	Construction	Mar-21	Jul-21	
Construction commenced in March 2021. Completion in July due to variations and wet weather.				
<b>Quarry Gardens Carparks (TIF Funded)</b>	Investigation & Design	Aug-21	May-22	
Waiting for final designs for consents. Stream repairs from August, carpark construction during summer.				
<b>Major Projects - Parks &amp; Recreation</b>				
<b>Matapōuri Beach Restoration</b>	Physical Works	Apr-21	Oct-21	
Works underway. 2 recent storms changed the estuary. Variation to consent to access sand from the beach.				
<b>Princes Road Seawall Renewal</b>	Physical works	Apr-21	Jul-21	
Works underway. Completion expected late June.				
<b>Ruakākā Sports Fields (Sand Removal)</b>	Physical works	Sep-20	Aug-21	
57,000m <sup>3</sup> of sand removed. 27,000m <sup>3</sup> still to remove. Looking to continue the sand removal in June/ July.				
<b>Ngunguru Seawall Renewal</b>	Design	TBC	TBC	
Waiting on developed design drawings to be issued for community meeting.				
<b>Town Basin Lighting Renewals</b>	Construction	Apr-21	Aug-21	
Works underway and progressing well. Overseas materials arriving in country soon.				
<b>Tikipunga – Sports Field Improvements</b>	Practical Completion	Nov-19	Sep-21	
Field 10 handed over to WDC Parks. Project in defects liability period.				
<b>Pyle Road West Seawall Renewal</b>	Procurement	Jul-21	Aug-21	
Contract awarded to Ventia. Starting work in July.				
<b>Waipu Youth Activity Zone - Skatepark</b>	Design	Oct-21	Dec-21	
Construction will be scheduled to start in October 2021.				
<b>Cobham Oval Carpark Upgrade</b>	Construction	Oct-20	Jun-21	
Construction commenced October, completion due June 2021.				
<b>Frank Holman Track Renewal</b>	Procurement	Oct-21	Dec-21	
Consent awarded. Works to be tendered and scheduled to start after winter.				

<b>Major Projects - Water</b>				
<b>Whau Valley Water Treatment Plant</b>	Construction	Mar-19	Oct-21	
Commissioning commenced in March, started operation to supply in May 2021 – Stage 1 completed in May 2021.				
<b>Major Projects - Waste &amp; Drainage</b>				
<b>Whangarei WWTP Discharge Consent Renewal</b>	Options Assessment	n/a	Aug-21	
Progressing CIA and Odour monitoring assessment				
<b>Stormwater Network Consent Applications</b>	Technical Reports	n/a	Dec-22	
Stormwater Catchment Strategic Assessment underway. Data gathering, asset updates & mapping continue.				
<b>Major Projects – Compliance &amp; Regulatory</b>				
<b>New Animal Shelter</b>	Design	Nov-21	Dec-22	
Cost Estimate received. Waiting outcome of LTP funding.				
<b>Major Projects – Venues &amp; Events</b>				
<b>NEC Replacement Roof</b>	Concept Design	TBC	TBC	
A value engineering exercise has been undertaken. Waiting outcome of LTP funding.				

### *Three Waters Delivery Plan Projects (\$11.78m DIA Funded)*

Three Waters Delivery Plan Projects	Current Stage	Estimated Construction Start Date	Estimated Completion Date	RAG Status
<b>Whareora Rd Watermain Renewal</b>	Complete	Nov-20	May-21	
Renewal of 800m PVC main. Works complete.				
<b>Rewarewa Rd Watermain Renewal</b>	Complete	Dec-20	May-21	
Renewal of 800m AC main. Works complete.				
<b>Kamo Rd Watermain Renewal</b>	Construction	Apr-21	Jul-21	
Renewal of 900m AC main. Works underway. On track for completion in July.				
<b>Kioreroa Rd Watermain Renewal – Design Only</b>	Design	n/a	Sep-21	
Renewal of 2200m AC main. Brought forward to align with CIP/PGF funded roading upgrade project.				
<b>Whau Valley Water Treatment Plant - Stage 2</b>	Construction	Jan-21	Dec-21	
Variation awarded for stage 2. On Track for completion December 21.				
<b>Poroti Water Treatment Plant - Design</b>	Design	n/a	Mar-22	
Design awarded to Beca. Design underway.				
<b>Water Filling Points</b>	Design	Feb-21	Mar-22	
One filling point completed. Ruakaka upgrade next. Other sites being investigated.				
<b>Leak Detection – Water Supply Network</b>	Investigation	n/a	Mar-22	
Work commenced. First sweep finished, second sweep due next summer. Leaks fixed.				
<b>Network Modelling – Water &amp; Wastewater</b>	Implementation	n/a	Mar-22	
Updates to water models, and the Whangarei and Bream Bay wastewater models. Awaiting final reports for WW.				
<b>Asset Condition Assessments – WW and SW</b>	Implementation	n/a	Mar-22	
A programme of CCTV pipe inspections to obtain asset condition information to inform renewal priorities. Ongoing.				
<b>Asset Data Improvements – 3 Waters</b>	Implementation	n/a	Mar-22	
Ongoing.				
<b>Enhanced Water Testing at Laboratory</b>	Implementation	Apr-21	Sep-21	
Order has been placed with Vendor. Shipping delays.				
<b>Hikurangi WWTP – Inlet Screen &amp; Plant Upgrades</b>	Design	Mar-21	Mar-22	
Membrane shed was demolished successfully. Data to be collected until Aug 21 to inform design.				
<b>Ngunguru WWTP – Inlet Screen</b>	Construction	Jan-21	Jul-22	
Civil work for the inlet screen complete. Screen due in July. Shipping delay due to Suez Canal issue.				
<b>Oakura WWTP – UV Upgrade</b>	Completed	Jan-21	Feb-21	
UV upgrade completed.				
<b>Whangarei WWTP Building Seismic Upgrade- Design</b>	Investigation	n/a	Mar-22	

Initial investigation complete. Progressing feasibility and design work.				
<b>Kauika Rd Wastewater Upgrade</b>	Procurement	n/a	Mar-22	
Contract awarded. Construction start date to be confirmed - expected to be September 2021.				
<b>Heretaunga St Wastewater Upgrade - Design</b>	Investigation	n/a	Mar-22	
Investigation and design to address surcharge and overflow issues. CCTV completed. Procuring designer.				
<b>Te Ao Māori Decision Making Model (CCAP)</b>	Execution	n/a	Mar-22	
Te Karearea and Te Huinga updated. Literature review commenced. Identifying experts for project team.				
<b>Mātauranga Māori Report &amp; GIS Capture</b>	Execution	n/a	Mar-22	
Project Execution Plan drafted. Investigation work commenced.				
<b>Three Waters Reform Options for Northland</b>	Execution	n/a	Jun-21	
Investment Logic Mapping workshops held. Reports finalised for reform discussions.				
<b>Three Waters Request for Information</b>	Completed	n/a	Feb-21	
RFI is 100% complete including further information and Special Factors request.				

## Waste and Drainage

Waste and Drainage Projects	Current Stage	Estimated Construction Start Date	Estimated Completion Date	RAG Status
<b>CON20055 - Whangarei Sewer Renewal 2019-2021</b>	Construction	Feb-21	Jul-21	
Construction is underway.				
<b>Heretaunga Catchment Sewer Upgrade Stage 1</b>	Construction	Feb-21	Jul-21	
Construction is underway.				
<b>Marsden Bay-Ruakaka WWTP Rising Main Upgrade</b>	Design	Oct-21	Jun-22	
Design is being finalised. Construction to start after sand mining is completed as advised by the landowner.				
<b>CON20061-Cove Rd-Waipu WWTP Rising Main</b>	Construction	Apr-21	Jun-21	
Construction is complete.				

## Water Services

Water Services Projects	Current Stage	Estimated Construction Start Date	Estimated Completion Date	RAG Status
<b>Water Treatment Plant Upgrades</b>	Construction	Sep-20	Jun-21	
Various small scale works completed.				
<b>Meter Replacements</b>	Design	Jan-21	Jun-21	
Focus on large and bulk meters, work started after delays developing programme.				
<b>Reticulation Programmed Works</b>	Construction	Jul-20	Jun-21	
Armstrong Ave completed, Barclay Place underway.				
<b>Minor Projects - Emergency Works</b>	Design	Jul-20	Jun-21	
Ruakaka Clarifiers complete, Dent Street crossing underway.				
<b>SCADA Upgrade</b>	Construction	May-19	Dec-21	
Ahuroa, Poroti, Maungakaramaea, Mangapai, Ruddells complete. Just Ruakaka and small sites left.				

## Roading/ Transportation

Roading Projects	Current Stage	Estimated Construction Start Date	Estimated Completion Date	RAG Status
<b>LED Street Lighting – Supply &amp; Install (V Category)</b>	Construction	Jul-19	Jun-22	
Southern infill contract – 99% completed. Northern infill contract nearly completed.				
<b>KSP Stage 5 (Final link to Kamo Village)</b>	Detailed Design	Feb-21	Jun-23	
Detailed design continuing				
<b>Dent Street Pedestrian Crossing Upgrade</b>	Construction	Sep-21	Nov-21	
Construction underway				
<b>Port / Kioreroa Intersection Upgrade (CIP)</b>	Design	May-21	Nov-22	
Tender evaluation for main contract being finalized and likely to start in July. Enabling works to relocate services starting in June. Consent application being lodged.				
<b>Raumanga Shared Path (CIP)</b>	Design	Oct-21	Jun-23	
Preliminary design underway, including route confirmation.				
<b>Tikipunga Cycle Trail Stage 2 (CIP)</b>	Construction	Nov-20	July-21	
Path construction nearly complete, bridge fabrication underway.				
<b>Kamo Shared Path – Kensington Avenue Link (CIP)</b>	Detailed Design	May-21	July-21	
Under construction.				

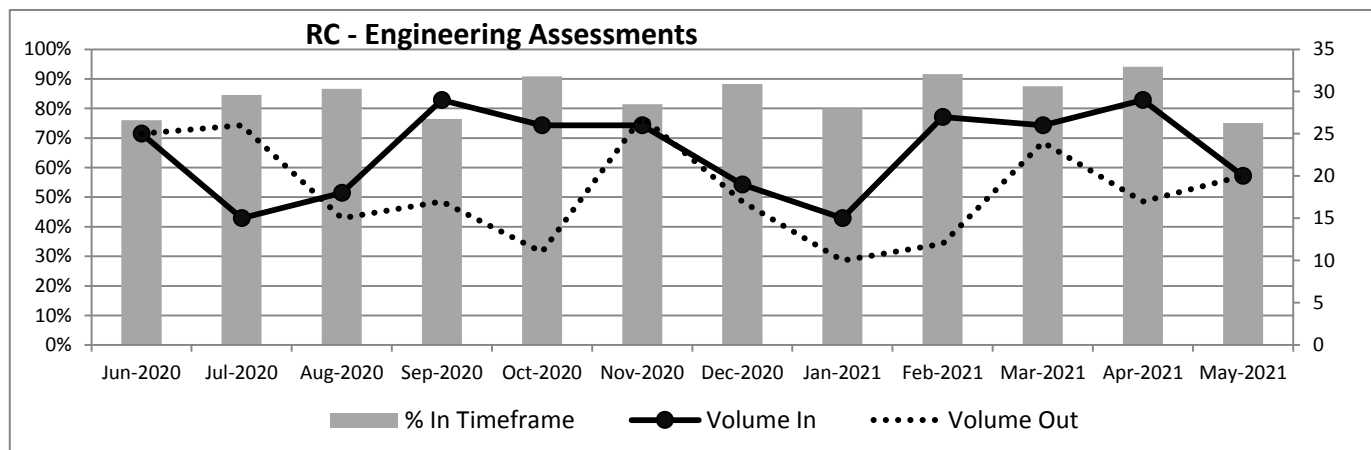
## Infrastructure Planning & Capital Works

### Infrastructure Planning

Work has commenced on the Natural Hazards Chapters of the District Plan which will involve consequential amendments to the Three Waters sections.

## Infrastructure Development

### Development Engineering



### New Applications

Development	Location	Size (Lots)
New drainage system at Whangarei Boys High	Kensington	1
Tikipunga Football Club Replacement Clubroom Building	Tikipunga	1
10 New Lots on Marsden Point Rd	OTP	10
12 New Lots on Whareora Rd	Whareora	12
New community centre	Ruakaka	1
Leasehold subdivision of Bunnings	Otaika	1
Amendment to SS Developments subdivision	Morningside	5

### Engineering Plans

Development	Location	Size (Lots)
Workman Properties Stg 3	Avenues	8
Classic Builders Stage 1	Tikipunga	28
Workman Properties Stg 3, 4 & 5	Avenues	21
Bream Bay Village- 12 units	OTP	12
WFH Properties – Stage 4b	OTP	56
Darch Point Rd	Whangarei Heads	6
7 Residential Lots	Maunu	7

### Developments under construction

Development	Location	Size (Lots)
Puriri Park	Puriri Park Road	37
Bream Bay Village	One Tree Point	75
Nova Scotia	Waipu	18
Marsden Cove Ltd	Stace Hopper Drive, One tree Point	70

Development	Location	Size (Lots)
TMB Developments	Three Mile Bush Road	28
Rock Solid	Kamo	91
Totara Parklands – Stage 8	Tikipunga	52
Barrett Homes - Stage 3	Tikipunga	38
Parklands – Stage 2	Kamo	26
Summerset Retirement Village	Tikipunga	1
Jessie Trust	Tikipunga	98
WFH The Landing Stage 4	One Tree Point	56
Logyard Road	Port Road	9

The number of applications received in May for Engineering assessment were 20. A total of 20 reports were issued and 12 placed on hold for further information. This decrease is typical for this time of year. The 20 applications are in-line with the 5-year average of 21, however this does not factor in the increased lots and complexity per application.

The 8-day level of service for engineering report delivery was 75% in May. We are currently one team member short and the team have worked hard to meet the extra demand placed on them. A total of 70% of applications were processed by Council staff in May, an increase from 55% last month. We are actively monitoring our staff for fatigue.

Our team has been busy with inspections, completing a total of 51 inspections in May. Construction has not slowed down as expected during the winter months.

### **Development Contributions**

May revenue recovery was \$226,213, year to date income is \$7,760,563. In May 28 applications were assessed as requiring contributions. Minor adjustments and ongoing discussions with audit to finalise the DC Policy for adoption.

### **Infrastructure Support**

Contract claims processed for the month of May was 58. The team processed 364 purchase orders in May. Work has begun with the Traffic Management team to move the Vehicle Crossing process to an electronic process. Business as usual in other areas with 36 Public Utility applications processed in the last month.

### **Capitalisation of Assets**

Current year spend of \$35,148,445.23 which includes \$9,400,361.84 of work carried out for the new Water Treatment Plant. The Town Basin playground and upgraded skatepark have been capitalised. Audit are onsite completing the interim Audit and will include checking samples of work completed this financial year.

May is showing a total WIP balance of \$65,648,276.19 across Water, Waste and Parks, which includes \$29,172,357.23 spend to date on the new Whau Valley Treatment Plant. Part of the remaining balance (\$2,053,388.84) is prior year projects waiting to be capitalised.

Capitalisation of the new Whau Valley Treatment Plant is underway, discussions around componentisation has started and we have had a tour of the new Plant to get an understanding of the lay out. Project Manager is working through the asset schedule and asset details are collected.

### **SIGMA Project – Asset Management System upgrade**

Project is currently on hold until Tech 1 come back with a fix on two issues which prevent further progress on the system completion. This impacts on delivery of the 'go-live' date of 1 July. Tech 1 have provided a date for this fix to be completed at the end of May. Once the fixes have been tested, the second round of testing will commence. A decision on the new go-live date will be agreed at that time. A new Project Manager has taken over and would expect to see some changes and process made within the next month.

### **LTP Infrastructure Workstream**

At the time of writing this report the LTP was had been recently adopted.

### **IQP Register Update**

After meeting with the industry around the disestablishment of the register there was some discussion over stormwater and transport requirements that would impact on surveyors and the work they do. Transport issues have been resolved. A further meeting was held with the industry and we are waiting on some expert advice on the level of expertise required to design a stormwater network. Once this has been provided, we will go back to the industry for discussion.



## Update to the Engineering Standards

The Engineering Standards is currently in the process of being updated but the mid-April review by an external consultant has been delayed due to the workload of the external reviewer. Transport and Stormwater are taking advantage of this delay to fine tune their sections. It will then be sent council formatting and layout. Once this stage is complete council will be holding workshops with relevant industry members for discussion and review.

## Health and Safety

### Health and Safety Risk Update May 2021

#### Staff reported incidents

Type of incident	#	Description
Lost time injury	1	<ul style="list-style-type: none"> <li>A Water technician fell down a hole in a grided walkway, when some of the steel plates had been removed by a Contractor. There were insufficient barriers and other controls in place. A full and through investigation was carried out by health and safety Adviser and Water treatment staff. A number of system failures were identified and will be addressed through improvement to the permit to work system, the development of a temporary barrier requirements guideline and training.</li> </ul>
Vehicle incident	1	<ul style="list-style-type: none"> <li>A vehicle was damaged while reversing – minor damage only</li> </ul>

#### Contractor incidents

Type of incident	#	Description
Lost time injury (LTI)	2	<ul style="list-style-type: none"> <li>A Northland Waste Ltd. operator got a spider bite on his wrist that became infected.</li> <li>Downer NZ Ltd. reported an LTI when a worker was bending down to lift out a grate and strained their back. Discussions on correct ways of manual handling were later discussed with the team.</li> </ul>
Medical treatment injury	1	<ul style="list-style-type: none"> <li>A Recreational Services Ltd. worker injured their hand while using a spade to remove excess dirt off a trenching wheel. He was taken to hospital for treatment. The methodology of the task has been reviewed to ensure this is not repeated.</li> </ul>
Minor injury	1	<ul style="list-style-type: none"> <li>A Robinson Asphalt Ltd. worker slipped and fell injuring several body parts</li> </ul>
Incidents	3	<ul style="list-style-type: none"> <li>A Recreational Services Ltd. worker reported a loss of traction on a very wet incline while mowing. The operator managed to regain control and reversed out of the situation safely.</li> <li>While using a chainsaw a Recreational Services Ltd. operator, grazed the chaps he was wearing that were protecting his leg. The protective equipment potentially saved him from injury.</li> <li>Fulton Hogan Ltd reported a near miss vehicle incident with one of their trucks and a member of the public, due to inadequate communication between the traffic safety personnel and the drivers.</li> </ul>
Property damage incident	1	<ul style="list-style-type: none"> <li>A Telephone cable strike was reported by Fulton Hogan Ltd. when doing work at Hukerenui. The cable was lying loosely in some vegetation, not even buried in the ground.</li> </ul>
Vehicle	3	<ul style="list-style-type: none"> <li>Northland Waste Ltd. reported damage to a truck while reversing when it hit a pole at the Uretiti transfer station.</li> <li>Northland Waste Ltd. reported another vehicle incident which occurred when trying to avoid a parked car in a very narrow street, accidentally clipping a tree. The driver was spoken with to next time use his runner to help spot him to negotiate tight areas.</li> <li>Fulton Hogan Ltd. reported an incident when one of their trucks reversed into a stationery van parked nearby, No spotter had been used. The driver was drug tested and spoken with.</li> </ul>

Type of incident	#	Description
Other	8	<ul style="list-style-type: none"> <li>Fulton Hogan have begun reporting a number of positive events, involving positive health and safety behaviours.</li> </ul>

#### Member of public incidents in the workplace

Type of incident	#	Description
Incident	1	<ul style="list-style-type: none"> <li>A student from Blomfield school could have hurt their hand when they picked up a prickly palm frond, while on a school field trip. Staff assisted in the situation.</li> </ul>

There were no Public safety incidents affecting members of the public or incidents affecting volunteers.

Council are very proud to support the local Northland Civil Contractor group, at their annual by sponsoring the \$2,500 health and safety award for their annual awards event. The Council H&S Manager was asked to be a judge again for the event and has worked with other judges to come up with the finalists. The winner will be advised in the next report.

## Waste and Drainage

### Operations and Maintenance

#### Whangarei WWTP

For the first 3 weeks of May, the plant saw a steady trend of the flow within the range of over 11,000 m<sup>3</sup>. A three-day rainfall event from 22<sup>nd</sup> to 24<sup>th</sup> boosted the flow to its second peak at just over 16,000 m<sup>3</sup>. Quickly after that the flow fluctuated before reaching its peak in May at over 18,500 m<sup>3</sup> on 29<sup>th</sup>. In general, the plant showed a very similar trend compared to the same period in May last year.

Activities carried out at the main plant during May included:

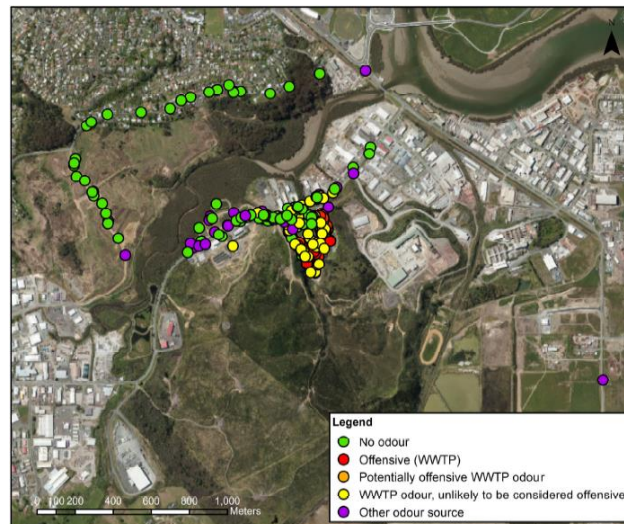
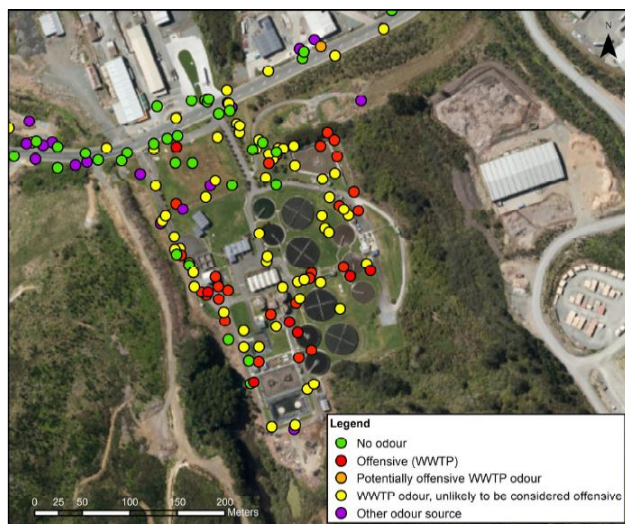
- During the annual inspection, the activated sludge pump no 3 was found to have a leak. It was removed for servicing and a spare unit was installed.
- A leak was found in Sludge line in digester No 2. The pipe was temporary repaired.
- The high flow screen wash water solenoid coils were replaced.
- The Variable Speed Drive (VSD) to surface aerator no 2 got fixed.
- The sludge recirculation pump No 2 was put back in-service following reconditioning, pump No 1 was serviced.
- The Equalisation basin (EQ) mixer and aerator checks completed.
- Digester mixer No 3 was put back in service while no 4 was undergoing maintenance.
- A restriction was discovered in the polymer dry dosing unit, not allowing enough polymer to pass through. This was replaced. After that polymer dosing lines were serviced.
- Annual inspection for Activated Sludge (AS) pumps completed. No issues were found.

#### Whangarei WWTP Resource Consent Renewal project

As part of Dynamic Adaptive planning pathway (DAPP), an Air quality (Odour) Assessment was completed during April and May to assess the potential for odour nuisance from the plant beyond the boundary and on the surrounding area.

- Offensive type odours are found at a few locations within the plant: inlet work, equalization basin, sludge storage tank and on-site storage for sludge disposal.
- In general, odour from the WWTP was not experienced further than 100 metres from the main odour sources
- A few odour sources identified outside of the plant
- An odour survey is being developed by consultants assisting us on this re-consenting journey.





## Rural WWTP Major Operation & Maintenance

### Hikurangi

- Shed to house the membrane was demolished and removed without any incident.
- The air compressor was bought back to the main plant.
- The operations team cleaned up the debris in the shed.
- A subcontractor is preparing a quotation to rebuild the shed.
- 7 consecutive days' laboratory sampling carried out. Results shall be used for physical design phase.

### Ruakaka

- Old inlet pipe work has been removed.
- 2 new surface aerators were assembled and installed at the two ponds. The existing old unit to be dismantled and delivered to scrap yard.
- Sludge samples were collected to determine whether sludge is suitable for landfill
- Construction plan for wetland desludging and conversion is being drafted. This will support the resource consent application for the upgrade to floating wetlands at this site.
- Reflective tape was installed at borehole no 35,36 and 37 which will assist lab technicians to collect samples.

### Ngunguru

- The Surface aerator for Ngunguru is expected to arrive in early June.
- Membrane aerated biological reactor (MABR) report now available and the demo unit was sent to Watercare for another trial.

### Portland

- Security fence install completed. As-built is on the way for capitalization of assets
- Solar panel was replaced with a new unit

### Waipu

- Raising main upgrade completed
- Borehole no 1 was bent due to earth work of the raising main upgrade. This is being worked through with contractor.

## Reticulation

There was one recorded spills incident in the May period

Date Spill Started	Date Spill Detected	Date Spill Ceased	Location	Cause	Volume (m <sup>3</sup> )	Type of Sewage	Action Taken
4/05	4/05	4/05	62 Walton Street, Whangarei	Rag solids blockage in downstream line.	<100L	Raw/Unscreened	NRC and DHB notified, line cleared, cess pits and area cleaned and disinfected. CCTV to be carried out to check the line for any defects

## Stormwater complaints under investigation

Key for table:

Stormwater complaints	Under investigation with works to be determined. If not noted, completion dates unknown until full investigations are complete and approval of works is given.
Stormwater complaints	Completed and shall be removed in next report

No	Location	Region	Description of problem	Responsibility (W&D unless otherwise stated)	Progress Update
1.	Whangarei Club on Rust Ave, (CBD)	(CBD)	Report of major storm damage to roof.	Roading	Under investigation
2.	240 Western Hills Dr, Avenues	Avenues	Report of culvert along the drive has been eroded significantly in the storm putting water meters, driveway, sewer line and road side power pole at risk.		Under investigation
3.	Third Avenue	Avenues	Stormwater open drains are not functioning		Under investigation
4.	69 George St Hikurangi	Hikurangi	Open drain is really effectively on the boundary of the two properties here – scouring is undermining properties		Under investigation
5.	1 Union Street, Hikurangi	Hikurangi	WA095519 Caller advises that there is a stormwater drain that runs along the side of their fenceline and they want to fill it in.		Under investigation
6.	16 Mcainch Place, Kamo	Kamo	Storm flooding in properties		Under investigation
7.	137 Pipiwai Road	Kamo	Stormwater problems to property.		Some localised drain clearing to be completed in June.
8.	Wrack street, Kensington	Kensington	WA092872 Water team removed the water main, operation team will carry out further investigation		Under investigation
9.	8 Mair St, Kensington	Kensington	Stormwater concerns		Under investigation
10.	18 Zealandia Street	Kensington	WA093237 Report of stormwater drain on Mains Avenue not working properly and water runs straight down to Zealandia Street causing properties to flood.		Met with the customer and site inspection completed. Stormwater maintenance work is sent to council contractors.
11.	13 Henry Street	Kensington	WA094012 Report of property being flooded due to lack of stormwater remedies.		Under investigation
12.	30 Russell Road, Kensington	Kensington	Large volumes of stormwater caused damage to property during flood event		Repairs completed around leaky manhole and pipe joints. No further action required.
13.	Kamo Road	Kensington	WA092758 Request for road hump between King St and Zealandia St be removed to allow water to flow down Kamo Rd.		Under investigation
14.	Austin Rd / Belle Lane, Maunu	Maunu	Belle Lane and Austin Road – flooding to properties and schools on lower side of Austin Road. Issue with soakage trench capacity.		Met with the Customer, site inspection completed. Meetings & discussions were held with the concerned officers from the neighbouring property developers to ensure stormwater controls in their development site are in place.

No	Location	Region	Description of problem	Responsibility (W&D unless otherwise stated)	Progress Update
					Council's Building Control team has been advised of required stormwater controls in this development. Indicative Overland flowpath routing was explained to the customers on site, measures to manage these flows were discussed in the meeting.
15.	14 Porowini Avenue, Morningside	Morningside	WA090402 Constant flooding of the buildings and land on this site		Under investigation
16.	55 Anzac Road	Morningside	Stormwater flooding on customer's driveway		Under investigation
17.	4 Shoebridge Crescent	Ngunguru	Flooding due to piping of open drain		Under investigation
18.	261 Oakura Rd, Oakura	Oakura	Overland flow path has been blocked by new building which has been built at a higher level	Building	
19.	5 Finch Street	One Tree Point	Saltwater flooding in properties		Met with the Customer, site inspection is completed. Temporarily resolved seawater flows in the network. Robust resolution is underway.
20.	48 Handforth Street, Onerahi	Onerahi	WA092143 Runoff from airport into roadside drain and swale that directs water across road into properties causing flooding	Roading – RDG072222	
21.	McKenzie Ave walkway, Onerahi	Onerahi	Report of inadequate stormwater reticulation on McKenzie Ave walkway		Met with the customer and site inspection completed. Stormwater Renewal Projects List for reticulation upgrade.
22.	64 West View Crescent, Onerahi	Onerahi	WA093082 Flooding to property and neighbours.		Met with the customer and site inspection completed. Added this area under Stormwater Renewal Projects List for reticulation upgrade.
23.	29 Weir Crescent, Onerahi	Onerahi	Flow from road not being intercepted by roadside drainage and flows down driveway of lower property	Roading	
24.	64 Beach Road, Onerahi	Onerahi	WA090283 Stormwater run-off from the airport washed out property at 64 Beach Road		Under investigation
25.	2 Kaiwaka Road, Onerahi	Onerahi	WA091997 Flooding damage to property from stormwater run off at airport.		Met with the customer, site inspection & investigation completed. Stormwater remedial works identified and to be actioned by council contractors.
26.	Sorrento Street, Onerahi	Onerahi	Property flooded due to stormwater run off during July storm.		Under investigation
27.	10 Montague Place, Onerahi	Onerahi	Property flooded due to stormwater run off during July storm.		Met with the customer, site inspection & investigation completed. Stormwater remedial works identified and to be actioned by council contractors.

No	Location	Region	Description of problem	Responsibility (W&D unless otherwise stated)	Progress Update
28.	272 Beach Road, Onerahi	Onerahi	Drainage discharging directly onto road	Roading	
29.	Weir Cres / Cliff Street	Onerahi	WA092952 Reports of heavy rain events creating flooding run off to downstream properties.		Under investigation
30.	20 Roderick Place	Onerahi	WA094991 Stormwater capacity near 20 Roderick place. Customer's house flooded in the July storm and has only recently been able to move back in. Please contact the customer		Under investigation
31.	15 Bayswater Place	Onerahi	Existing network is probably under capacity which results in flooding of private driveways.		Under investigation
32.	29 & 31 Cartwright Road	Onerahi	Due to rain stormwater pipes & retaining walls are undermined.		Under investigation
33.	3 Charlise Place	Onerahi	Customer wanting to remove large plants & tidy up a section of road		Under investigation
34.	46E Kohe Street, Parahaki	Parahaki	Report of stormwater running down private right of way causing damage		Under investigation
35.	12 Ritchie Road	Parua Bay	Caller has a fenced off easement area of water on her section that is councils. The fence is in need of repair and the caller is asking that this be repaired		Under investigation
36.	948 Whangarei Heads Road	Parua Bay	Request to talk to the council engineer about stormwater drainage issues to get their building signed off.		Met with the customer, site inspection & desktop assessment completed. Recommendations to resolve stormwater drainage were explained to the customer.
37.	120 Tauroa St and Acacia Park, Raumanga	Raumanga	Private stormwater drainage damaging private roads. Customer believes it belongs to Council.		Under investigation
38.	15 Kent Road, Regent	Regent	Storm water issues at Kent Road - manhole that pops at the small roundabout at Kent Road during big rain events and floods downstream properties.		Met with the customer and site inspection completed. Further investigation in progress.
39.	Shortland Street, Regent	Regent	Flooding at the intersection of Mill and Kamo Road – investigate connecting SW drainage along Donald St to Hatea Drive		Under investigation
40.	Dune Lake, Ruakaka	Ruakaka	Reports of dead sea life.		Under investigation. Meeting held with NRC and customers to advance this. Awaiting guidance from NRC.
41.	33 Briden Drive	Tikipunga	Yard Flooding, customer requests for suggestions.		Under Investigation
42.	32 Whangaumu Rd, Tutukaka	Tutukaka	Flooding to lower lying properties across the road		Under investigation
43.	68/20 Eilean Donan Drive, Waipu	Waipu	Flow from Right of Way culvert concentrating flow onto property. Property has constructed a bund to prevent this, thus damming flow		Bund removed. Problem resolved.

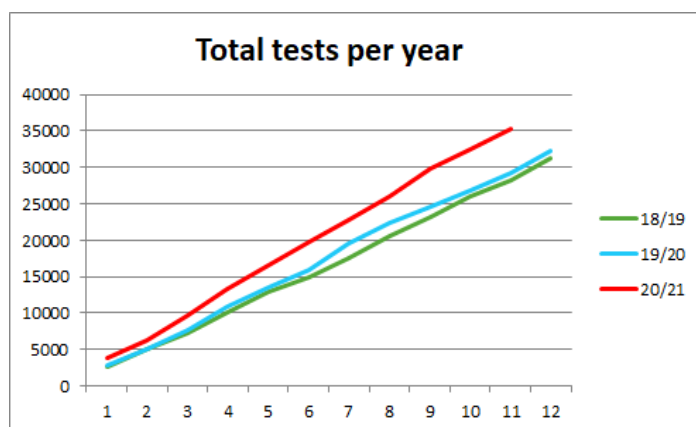
No	Location	Region	Description of problem	Responsibility (W&D unless otherwise stated)	Progress Update
44.	St Marys Rd Waipu	Waipu	Roadside swale has been infilled to construct footpath and road berm. Pipe is very shallow at discharge and is being damaged by being driven over	Roading	
45.	23 Stuart Rd, Reotahi,	Whangarei Heads	Reports of council infrastructure inadequacies damaging property		Under investigation. Responding to Ombudsman letter.
46.	275a Kamo Road, Whau Valley	Whau Valley	Open drain has been piped – capacity issues have resulted		Further investigation recommended.
47.	Glendale Rd, Woodhill	Woodhill	Request to install a grate to catch debris coming down from Coronation Reserve		Under investigation
48.	98 Walton Street	Avenues	Issue with stormwater manhole and lid.		Under investigation
49.	38 Murdoch Crescent	Raumanga	750 mm stormwater pipe collapsed		Under investigation

## Laboratory Report

For May 2021 712 samples were analysed for 2920 tests. 23% of the tests were subcontracted and 41% of results were reported within 5 working days.

This continues to be a 17.5 % increase in testing numbers for the same period in the previous year. The Lab workload continues to be excessive, this has increased during May due to a staff resignation. Efforts to recruit another technician are not successful at this time.

*Graph shows the test numbers for year ending 30 June.*



## Roading - Transportation

### Maintenance Contracts

Programmed works completed during May were as follows:

- Heavy metalling of Omana Road, Awarua Road, Gomez Road, Kaiikanui Road and Whananaki South Road.
- Brooks Road seal extension has been completed, apart from road signs.
- Massey Road seal extension base completed. Chip seal, line marking & road signs are outstanding.
- Rewarewa road marking completed.
- Brooks road marking completed.
- Finch Rd – remove drainage rocks and clear debris.
- Water-tabling Tangihua Rd, O'Carroll Rd, Ararua Rd, Omana Rd, Codlin Rd, Bint Rd, Harwood Rd, Waionehu Rd, Cove Rd, Marsden Pt Rd, Springfield Rd, Bartlett rd, Glen Rd, Tauraroa Rd.
- A crew is currently working on Dent Street intersection, alterations to footpath, removal of tree grates, and removal of cobblestones.
- Walkways cleared of vegetation - Anzac Rd, Holmes Lane.
- Kamo Shared Path – fixing breaks in wire fence.
- Porowini Ave – mill and fills.
- Asphaltic Concrete work – Hector Lang, Kingswood Pl, Glenmohr Rd, Cove Rd, Kioreroa Rd
- Concrete work – Onemama Rd, Kioreroa Rd.



- Mechanised culvert cleaning crew working through the Whananaki Area.
- There have been two crews water tabling in the Hukerenui/Pipiwai area.
- Dish channel works in the Ngunguru and Whananaki areas.
- Vegetation and dangerous tree removal work completed.
- Clean fill dump site maintenance.

Routine Works completed this month are as follows:

- 186km of unsealed roads graded along with 2,582 m3 of maintenance aggregate applied and 2311 potholes filled.
- Cyclic and high leaf fall sweeping carried out on 2115 Roads – 684.91 kms.
- Areas swept: Airport, Central, Regent, Kamo, Kensington, Mairtown, Smeatons, Whau Valley, Woodhill, Onerahi, Morningside, Tikipunga, Tikipunga North, Tikipunga South, Raumanga, Otangarei, Maunu, Otaika, Kamo West, Kamo West, Macksey, Onerahi East, Onerahi West, Parahaki, Port, Riverside
- Channels and grates continuing to be cleared.
- We are replacing old black and white chevrons with new compliant chevrons.
- We are still completing our final vegetation spray round for this financial year.



**Wet, Roll and Grade on Brooks Rd**

#### Projects started in May

Category	Sub activity	Location
214 - Sealed Road pavement rehabilitation	Rehabs	Rewa Rewa Road
341 - Low-Cost Low Risk	Safety	Cove Road
CIP	Cycleways	Kamo Shared Path Link

#### Projects to start in June

Category	Sub activity	Location
341 - Low-Cost Low Risk	Safety	Ngunguru Road - Murphy's Corner
CIP	Intersections	Port Road (Limeburner's Creek) Bridge and Kioreroa Road Intersection

### Photo Wall



Nook Rd - Seal Extension



Dent Street - Finished asphalt and poured concrete path



Brooks Rd - Seal Extension



Kamo Shared Path - Kensington Park Link/Path ready for pour



Rewarewa road - Rehab



Tahunatapu Rd - Seal Extension



**Significant Projects**

Council	Category	Sub-activity	Location	% Complete	Monthly Update	Next month planned activities
WDC	214 - Sealed Road pavement rehabilitation	Rehabs	Maunu Road	50%	Project cancelled.	Close out
WDC	214 - Sealed Road pavement rehabilitation	Rehabs	Mill Road	100%	Re-work, manhole covers to fix Rework tie in	Close out
WDC	214 - Sealed Road pavement rehabilitation	Rehabs	Rewa Rewa Road	96%	Construction complete	Close out
WDC	324 - Road Improvements	Intersection	Maunu/ Porowini Intersection	100%	Construction complete and Practical Completion Certificate issued. Final paperwork to come (as-builts etc.)	12-month Defects Period. Receive close-out documents and final claim from contractor.
WDC	341 - Low-Cost Low Risk	Bridge	Whangarei Heads Road	88%	Defects liability period	Defects liability period
WDC	341 - Low-Cost Low Risk	Intersection	Robert/ Walton Intersection	78%	Progress detailed design	Progress detailed design
WDC	341 - Low-Cost Low Risk	New Footpath	One Tree Point Rd	100%	Completed	Complete construction
WDC	341 - Low-Cost Low Risk	Pedestrian Improvements	Dent Street Pedestrian Crossing Upgrade	50%	Continue construction	Continue construction
WDC	341 - Low-Cost Low Risk	Safety	Cove Road	46%	Construction commenced	Complete construction
WDC	341 - Low-Cost Low Risk	Safety	Ngunguru Road - Murphy's Corner	45%	Construction contract awarded	Complete Construction
WDC	341 - Low-Cost Low Risk	Speed	Various sites - Speed limit infrastructure	50%	Construction is underway for Waipu, Ruakaka, One Tree point, and Vinegar Hill. Most speed change signs and repeaters have been installed.	Continue the installation of speed signs. Finalise design for threshold treatments and curve advisory warning signs. Issue NTC3 to Downer and continue the remaining works.
WDC	341 - Low-Cost Low Risk	Traffic Calming	Hikurangi Township (King Street/George Street/Valley Road)	100%	Completed	Complete
WDC	452 - Cycling Facilities	Cycleways	Kamo cycleway Stage 5 (Fisher Tce to Station Rd)	85%	Progressing design	Progressing design



Council	Category	Sub-activity	Location	% Complete	Monthly Update	Next month planned activities
WDC	Bus Shelter Renewal	Public transport	Rose Street Bus Terminal	39%	Detailed design being updated for revised pavement design. Tender documents nearing completion. Bus shelter offer of service received and being reviewed. Shelters will be available 3 months after order placed.	Place order for bus shelters. Detailed design to be finalised. Inform owners and businesses about removal of parallel parking outside Grand Hotel on Rose Street. Complete tender document for civil works and release tender to market.
WDC	CIP	Cycleways	Kamo Shared Path Link	17%	Works progressing	Complete works
WDC	CIP	Cycleways	Raumanga Shared Path	10%	Design underway	Continue with design
WDC	CIP	Intersections	Port Road (Limeburner's Creek) Bridge and Kioreroa Road Intersection	54%	Tenders closed 6th May. Tender evaluation is well underway and preferred tenderer to be identified by end of May. Cultural impact assessment continuing. Peer review of bridge design is underway. Intersection business case is underway and workshopped with NZTA. Service authority agreements for enabling works have been signed and enabling contractor currently being engaged. Consultation with boat shed owner ongoing. Intersection modelling has been completed. Landscaping concept design is underway. Resource consent application being finalised in conjunction with mana whenua.	Resource consent application to be lodged in early June. Enabling contractor and service authorities carry out service relocations to clear the bridge area. Negotiations with preferred tenderer and award of main bridge contract at June Council meeting. Main contractor on site at end of June. Peer review of bridge design completed. Intersection business case continues. Cultural impact assessment completed. Processing of resource consent application nears completion.

Council	Category	Sub-activity	Location	% Complete	Monthly Update	Next month planned activities
WDC	Redeployment Package	New Footpath	Gillingham Rd	100%	Completed	Finalise as-built drawings and required MSQA Documentations
WDC	Redeployment Package	New Footpath	Ngunguru Rd from Whangarei Falls to (or close to) Ngunguru Rd path	100%	Completed	Finalise as-built drawings and required MSQA Documentations
WDC	Redeployment Package	New Footpath	One Tree Point Rd	100%	Completed	Complete
WDC	Redeployment Package	New Footpath	Tauraroa Rd, Maungakarama	100%	Completed	Finalise as-built drawings and required MSQA Documentations

## Parks, Recreation and Solid Waste

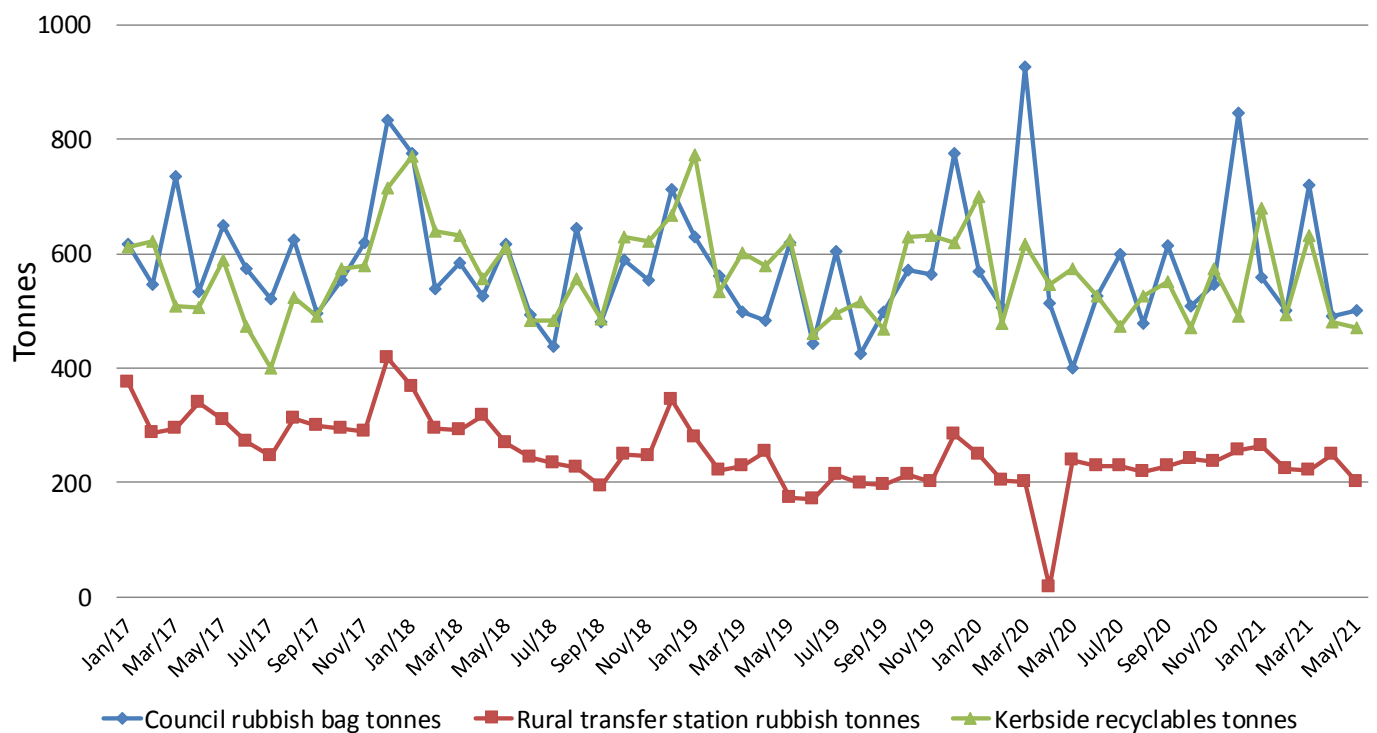
### Operations

#### Solid Waste Operations

The rural refuse and recycling stations and kerbside collection operations have been going well. The number of properties that have been developed in the area covered by the kerbside collections on Tuesday means that some rebalancing of the routes needs to be arranged. Northland Regional Council audited all of the rural transfer stations for consent compliance and only minor issues were identified relating to litter and vermin. Corrective actions have been taken and the staff instructed to be more proactive.

Monthly waste tonnages are shown in the table and chart below.

**Solid Waste Tonnes Jan 2017 - Year to Date**



Council Rubbish Bag Collection Tonnes	2020/21	2019/20	RTS Tonnes	2020/21	2019/20	Recycling Tonnes	2020/21	2019/20
June		526	June		241	June		633
May	500	400	May	210	256	May	565	684
April	491	514	April	270	20	April	623	575
March	720	927	March	236	215	March	730	705
February	500	506	February	240	221	February	616	593
January	559	568	January	290	277	January	847	856
December	845	776	December	280	311	December	622	699
November	545	563	November	252	220	November	673	704
October	509	570	October	261	224	October	567	698
September	613	497	September	246	217	September	633	525
August	477	424	August	238	210	August	633	577
July	598	605	July	241	226	July	566	554
Total for period	6357	6876		2764	2638		7075	7803

## Walking Tracks

Northland Park Care has had a busy May with maintenance work across the Track network in preparation for the winter season.

Clearing drains, weed control and windfall clearance have been the main priorities.

### Track Maintenance Work Completed May

Track Area	Date	Work Completed
Falls to AH Reed	12/05/2021	Cleared drains/culverts, weedspray, clear windfall
AH Reed to Vale Rd	12/05/2021	Cleared drains/culverts, weedspray, clear windfall
Vale Rd to Town Basin	12/05/2021	Cleared drains/culverts, weedspray, clear windfall
<b>Whangarei Falls</b>		
Loop Walk	10/05/2021	Cleared drains/culverts, weedspray, clear windfall
<b>A H Reed Kauri Park</b>		
Elizabeth Track	10/05/2021	Cleared drains/culverts, weedspray, clear windfall
Alexander Track	10/05/2021	<b>Closed for bridge replacement</b>
McKinnon Track	10/05/2021	Cleared drains/culverts, weedspray, clear windfall
<b>Parihaka Summit Tracks</b>		
Dobbie Track	13/05/2021	Cleared drains/culverts, weedspray, clear windfall
Drummond Track	13/05/2021	Cleared drains/culverts, weedspray, clear windfall
Ross Track	14/05/2021	Cleared drains/culverts, weedspray, clear windfall
<b>Mackesy Bush Tracks</b>		
Memorial Dr to Ross Track	14/05/2021	Cleared drains/culverts, weedspray, clear windfall
Memorial Dr to Riverside	14/05/2021	Cleared drains/culverts, weedspray, clear windfall
Riverside to Ross Track	14/05/2021	Cleared drains/culverts, weedspray, clear windfall
Boswell's Track	28/05/2021	Cleared drains/culverts, weedspray, clear windfall
Waverley St Link	31/05/2021	Cleared drains/culverts, weedspray, clear windfall
George Pt Rd Link	31/05/2021	Cleared drains/culverts, weedspray, clear windfall
<b>Mt Aubrey-Tiller Park</b>		
Mt Aubrey	19/05/2021	Weedeat/Mow Carpark/Weedspray
<b>Reotahi Coastal Walkway</b>		
Little Munro to Reotahi	19/05/2021	Cleared drains/culverts, weedspray, clear windfall
Norfolk Street Link	19/05/2021	Cleared drains/culverts, weedspray, clear windfall
Matuku St Link	19/05/2021	Cleared drains/culverts, weedspray, clear windfall
<b>Ngunguru Walkways</b>		
Access to Sport Complex	31/05/2021	Cleared drains/culverts, weedspray, clear windfall
<b>Tutukaka Block</b>		
William Parata Lookout	31/05/2021	Cleared drains/culverts, weedspray, clear windfall
Dolphin Access to Beach	31/05/2021	Cleared drains/culverts, weedspray, clear windfall

Track Area	Date	Work Completed
Rauhomaumau to Beach	31/05/2021	Cleared drains/culverts, weedspray, clear windfall
Tutukaka Estate Bush Walk	31/05/2021	Cleared drains/culverts, weedspray, clear windfall
Whangaumu to Ngunguru	31/05/2021	Weedeat
Whangaumu Lookout Walk	31/05/2021	Cleared drains/culverts, weedspray, clear windfall
<b>Matapouri &amp; Whale Bay</b>		
Headland Track	31/05/2021	Cleared drains/culverts, weedspray, clear windfall
Whale Bay Track	31/05/2021	Cleared drains/culverts, weedspray, clear windfall
Morrison Res Track	31/05/2021	Cleared drains/culverts, weedspray, clear windfall
Ridge Track	31/05/2021	Cleared drains/culverts, weedspray, clear windfall
<b>Limestone Island Tracks</b>		
All tracks	4/05/2021	Weedeat,spray, side trim vegetation
<b>Sands Road</b>		
Sands - Clapham Rd link	10/05/2021	Weedeat,spray, side trim vegetation
<b>Tamaterau</b>		
Devonshire Res to Scott Rd	5/05/2021	Cleared drains/culverts, weedspray, clear windfall
<b>Manganese Point</b>		
Beach access track	5/05/2021	Cleared drains/culverts, weedspray, clear windfall
<b>Mair Park</b>		
Monument Track	28/05/2021	Cleared drains/culverts, weedspray, clear windfall
River Walk	28/05/2021	Cleared drains/culverts, weedspray, clear windfall
Homestead Track	28/05/2021	Cleared drains/culverts, weedspray, clear windfall
<b>Taiharuru Headland</b>		
Huitau Pa Walkway	19/05/2021	Weedeat, weedspray
<b>Mackeral Track</b>	3/05/2021	Weedeat, weedspray, side trim vegetation
<b>Parihaka Veg Control</b>		
Goetzee Bridle Track	27/05/2021	Weedeat, weedspray

## Tree Maintenance

Treescape® had one crew full time on the contract with a second crew doing around 10 days work during May.

Staff worked 3 Saturdays to complete the palm tree frond and seed head removals around the CBD area.

This month two more Parks and Reserves were completed as part of the scheduled maintenance, and 16 Streets were completed. Two of these streets were new that were not recorded on the original work program.

A large problematic Phoenix Palm on the boundary of a Tui Crescent property and Hodges Park was removed, as well as a hazardous large dead pine tree at Wellington's Bay on the road berm.

## Coastal Structures

In May 56 inspections were completed across the district, asset inspections are up to date.

A review of inspection frequency has indicated a trend towards too many inspections. This has been conveyed to the Contractor to adjust to the appropriate level of service.

The contractor has made good progress on prioritised minor unscheduled work. Recent storm damage repairs will be scheduled in July assets including the following:

- Damaged groyne at Pataua South and exposed matting
- 1x Steps at McGregors bay
- Scouring of the Ohawini beach access. This work requires NRC consent however does not restrict access to the beach due to the size of the right side of the access.



**Ohawini Bay****McGregors Bay****Pataua South**

NRC monitoring of the Pontoon and Jetty owned by the Tutukaka marina identified non-compliance and Health & Safety issues. The Marina communicated no desire to replace the assets to consent holder WDC. Fortunately, a barge was onsite at the time so WDC used the opportunity to remove the assets at reduced cost.

### Sports Parks

Work is continuing to prepare for the Rugby World Cup, now in October 2022. Ngunguru is one of the training locations and existing fencing is too close to the field touch line to be safe. The delapidated fence has now been replaced by combined vehicle barriers / seating along the southern and eastern edges, which is already proving popular with users. The drainage lines have now grown in with turf and water getting away well. We are optimistic that Ngunguru will be a great venue.



***Old fence on the left has now been removed and replaced by combined vehicle barriers / seating***

Sports codes have been requested to provide feedback on the performance of WDC and our contractors regarding the maintenance of our facilities. Feedback has been good so far although some are still being awaited.

Cricket wickets have been renovated this month as ground conditions have allowed. We are fortunate to have a new cricket groundsman through our contractors, who is already showing new enthusiasm and ideas. He will be working hard to ensure that the drainage slits created at the Oval grow over quickly in time for the summer playing season.

Football and rugby fields are holding up really well to heavy use this winter. It has not been necessary to have any closures at this stage of being half way through the winter season.

We are placing a lot of emphasis on the field margins and gardens surrounding our Sports Parks currently. The stream margin at Koropupu has been an unacceptable mess for quite some time but has now been tidied up and planting will take place this winter to keep it tidy. Similar work is planned for the field margins at Otangarei.

### Parks and Gardens

May received 80mm of rainfall with a couple of bigger falls in the second half of the month.

Annual bed changeover was completed in May with all beds establishing well. Almost a tradition these days, Laurie Hall Park has a variety of vegetables planted in its display. This is always popular and enables us to give back to good causes at the end of the season with food donations.



**Town Basin Sundial bed**

Infill planting at Cafler Park stream has commenced with pest plant removal and weed control. Planting to commence early June. Recreational Services has a new Horticulture Manager, Michelle Clark who will bring new ideas, new energy, and more structure to their team.

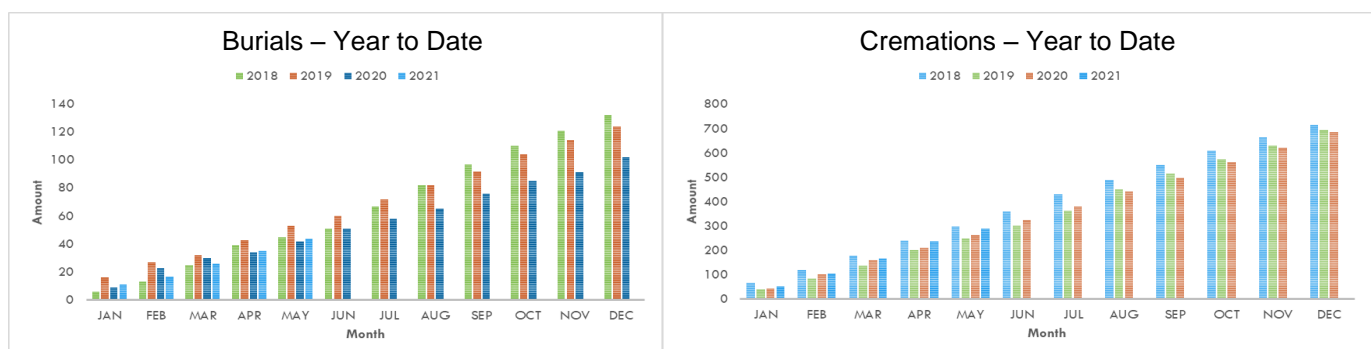
May has been a busy time for the contractors mowing teams. The Spring flush has continued throughout May with exceptional growth rates of up to 120mm over an eight-day period. Growth rates slowed slightly in late May, which will enable the contractor to catch up in June. We have asked the contractor to focus on turf creep on all mowing sites. Turf creep is when the mown edges slowly get smaller and the unmown edges get wider. Every now and then we need to 'push back' these edges.

## Playgrounds and Skate Parks

During May, following the issues we had with the playground chimes, new interactive panels have been ordered, including a couple of new musical panels that we hope are not as annoying and can have the volume adjusted. These are coming from overseas and will take a few months to arrive. Some damage to the safety surfacing has been repaired by the manufacturer. The rest of the surface is settling in well and we are having a lot less rubber particles coming loose. Shade sails around our playgrounds have been removed for the winter.

The upgraded skate park at William Fraser continues to be graffitied and we are now just concentrating on tagging visible from the road.

## Cemetery



9 Burials and 6 cremains interments, including a natural burial, bringing the total of natural burials to 6. 44 Burials and 291 Cremations year to date.

The wet weather has left us with some catching up to do on the grounds maintenance which is normal for this time of the year.

The weather in Rotorua the week of the cemeteries and crematoria conference was fantastic, and the conference was a worthwhile trip as always, with some very informative speakers. The Maunu cemetery received the innovation award for our natural burial area winning against two other cemetery entrants.

The rabbits in the Kamo cemetery have been a particular nuisance this year due to the dry weather. Our contractor has managed to get them under control mostly, but the rabbits did cause some damage to the grounds while digging out their holes. The holes were filled in, but the rabbits just kept diggin them out again even with large rocks placed in the holes. We will look into options to prevent this happening.

## Botanica

Visitor numbers for April: 1001

A slight slowing down of visitors for this month, which is probably due to the time of year.

The annual Pohutukawa coast tree giveaway was another success with the trees going at a good pace taking 2 and a half days. The weather must have had an impact because we didn't break the previous record of a day and half.

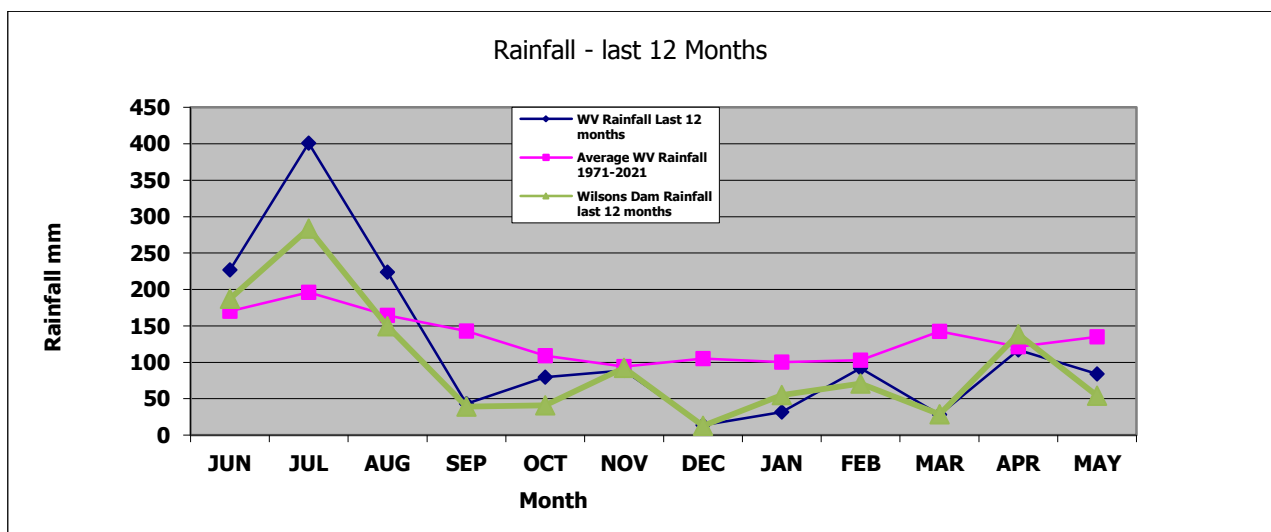
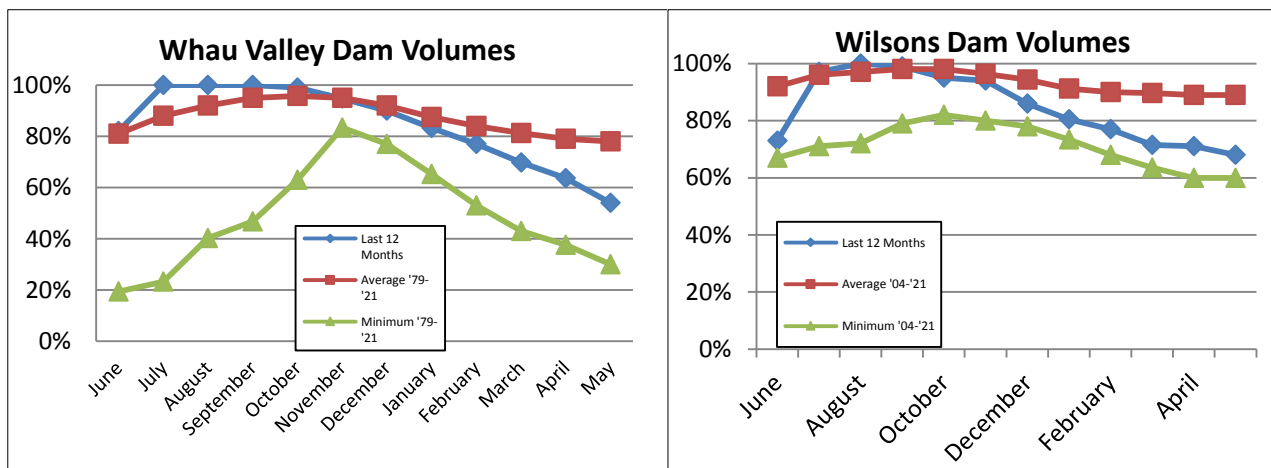
The foyer display is looking great as normal, and the main conservatory has had a few tweaks, with some of the larger trees having to be moved as they were hitting the roof of the building.

## Water Services

### Operations

#### Rainfall and Water Sources

May was another dry month with only 84mm of rain falling compared to the monthly average of 135mm. This continues the record trend of a low cumulative rainfall since the beginning of Spring. Only 587 mm has fallen over these 9 months compared to the long-term average of 1044mm. This is lower than at the same stage of the record dry year of 2019. Wilsons Dam had 54mm of rain which was less than the May average of 114mm for that site. The dry last nine months is beginning to have a significant impact on dam levels which are dropping to well below average levels. The Whau Valley Dam is now at 54% (78% at time of writing) which is below the average of 78% but just above the same time last year (49%). Wilsons Dam dropped slightly and sits at 68% which is also below average but above last year's level of 60%. Although the NIWA forecast is for average rainfall over the next 3 months, we are getting to the stage where we will need to see above average rainfall over winter to see the dams and particularly the aquifers re-fill.





## Production Report

### Compliance

Whau Valley WTP – Plant was fully compliant for protozoa and bacteriological.

Ruakaka WTP – Plant was fully compliant for protozoa and bacteriological.

Ahuroa WTP – Plant was fully compliant for protozoa and bacteriological.

Ruddells WTP – Plant was fully compliant for protozoa and bacteriological.

Poroti WTP – Plant was fully compliant for protozoa and bacteriological.

Maungakarama WTP – Plant was fully compliant for protozoa and bacteriological.

Mangapai WTP – Plant was fully compliant for protozoa and bacteriological.

### Other works

The algal bloom at Wilsons Dam continues and cell counts have actually risen recently. This may be due to increased rainfall since the beginning of April washing nutrients into the dam. We will also be checking the aeration system to make sure that is working correctly. The diatom dosing continues with the additional dosing equipment now operating in some of the shallower side arms of the reservoir.

The upgrade of the SCADA system is progressing well with most of the dams, treatment plants, reservoirs and pump stations having been upgraded. Only Ruakaka treatment plants remains to be done. This will require the plant to be shut down for a week, so staff are working with the Refinery to determine a suitable time in June to undertake this. The new system operates on the cellular network and should be significantly more reliable than the old radio telemetry.

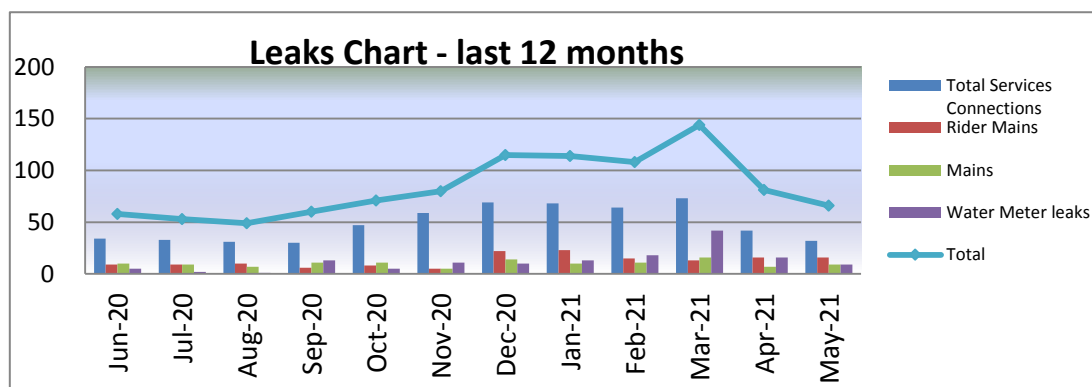
### Distribution Report

#### Water Statistics

41	Connection leaks repaired
25	Rider/Main leaks repaired
48	New connections installed
51	Faulty meters replaced

A total of 41 service connection leaks were repaired together with 25 main and rider main leaks. The number of leaks remained low as the damper conditions make leaks more difficult to spot and the leak detection programme is now complete. It is anticipated the number of leaks will remain low as we get more rain over Winter. A total of 48 new water connections were installed during the month and 51 meters were replaced after being reported faulty by the meter readers.

The following chart shows the number of leaks per category of pipe fixed under the maintenance contract during the last year.



## Capital Works

### Reticulation Programmed Works

Water mains in Armstrong Ave and Barclay Place have experienced some breaks recently and have been fast tracked for replacement by the maintenance contractor. Armstrong Ave is now complete, and Barclay Place will be completed in June. Staff are also looking to upgrade water mains in the Town Basin and John Street area to take advantage of other works being undertaken in the area. The main along State Highway one between Portland intersection and Maungakarama Road has burst on a number of occasions. Staff were looking to replace the main in conjunction with the 4 laning of the State Highway. Unfortunately, now the project has been stopped by Waka Kotahi staff will now press ahead with the main replacement as soon as possible.

### 3 Waters Funding Projects

The Capital projects that will be funded by the Governments 3 Water fund are, Whau Valley Water Treatment Plant stage 2, Poroti Water Treatment Plant Upgrade – Design, Whareora Road watermain replacement, Rewa Rewa Road water main replacement, Kamo Road water main replacement and the installation of filling points. Work on Rewa Rewa



Road and Whareora Roads are now complete and the Kamo main work will be completed in June. The Whau Valley WTP stage 2 work has been awarded to the existing contractor and is due for completion by the end of the year. The concept design for the Poroti upgrade has been completed work has now started on the preliminary design. Work has also started on the design of the electronic control system for the new filling points with the new controls being introduced at the Kioreroa Road filling point and appear to be working well.

### Other projects

Work is underway to identify and secure land in Three Mile Bush for a new storage reservoir. A suitable site has been identified and geotechnical investigations have been completed. A valuation has been undertaken and approval obtained from Council to purchase the land. Staff are working with the developer regarding the inclusion of physical works in the settlement package. It is hoped to be able to purchase the land as soon as possible so the construction can begin next financial year. Initial Geotechnical studies have also been undertaken at Kamo Reservoir and Waipu reservoirs ahead of future reservoir projects at these locations.

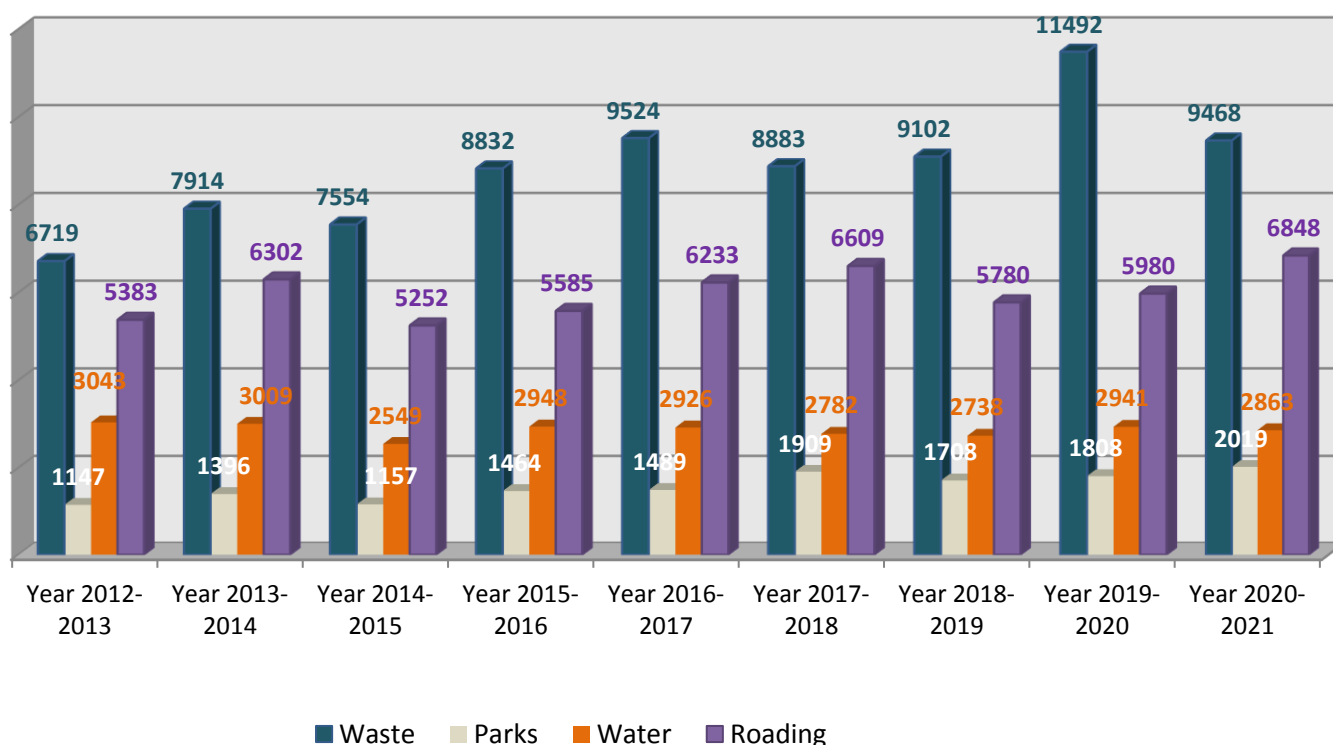
### Consents and Compliance – Laboratory Water Quality Tests

Description	Number of Tests	Failures		Results	Goal	Retest
E. Coli leaving WTP	10	0		100%	100%	N/A
E. Coli within distribution	38	0		100%	100%	N/A
Free Available Chlorine within distribution (above 0.2mg/l)	78	0		100%	95%	N/A

## Customer Request Management Services (CRMs)

The Infrastructure Departments received a total of **1924** CRMs in the month of **May 2021**. A total of 21198 CRMs have been received to date for 2020-2021 financial year. Graph below shows the number of CRMs received for the Infrastructure Departments over the last 8 financial years, to

**Total CRMs for the Infrastructure Departments  
over the last 8 financial years, to date**





**RESOLUTION TO EXCLUDE THE PUBLIC**

That the public be excluded from the following parts of proceedings of this meeting.

The general subject of each matter to be considered while the public is excluded, the reason for passing this resolution in relation to each matter, and the specific grounds under Section 48(1) of the Local Government Official Information and Meetings Act 1987 for the passing of this resolution are as follows:

1.	The making available of information would be likely to unreasonably prejudice the commercial position of persons who are the subject of the information. {Section 7(2)(c)}
2.	To enable the council (the committee) to carry on without prejudice or disadvantage commercial negotiations. {(Section 7(2)(i))}.
3.	To protect the privacy of natural persons. {Section 7(2)(a)}.
4.	Publicity prior to successful prosecution of the individuals named would be contrary to the laws of natural justice and may constitute contempt of court. {Section 48(1)(b)}.
5.	To protect information which is the subject to an obligation of confidence, the publication of such information would be likely to prejudice the supply of information from the same source and it is in the public interest that such information should continue to be supplied. {Section 7(2)(c)(i)}.
6.	In order to maintain legal professional privilege. {Section 2(g)}.
7.	To enable the council to carry on without prejudice or disadvantage, negotiations {Section 7(2)(i)}.

**Resolution to allow members of the public to remain**

If the council/committee wishes members of the public to remain during discussion of confidential items the following additional recommendation will need to be passed:

**Move/Second**

"That \_\_\_\_\_ be permitted to remain at this meeting, after the public has been excluded, because of his/her/their knowledge of Item \_\_\_\_\_.

This knowledge, which will be of assistance in relation to the matter to be discussed, is relevant to that matter because \_\_\_\_\_.

*Note:*

*Every resolution to exclude the public shall be put at a time when the meeting is open to the public.*