

Council Briefing Agenda

Date: 15 June, 2021

Time: 9:00 am

Location: Council Chamber
Forum North, Rust Avenue
Whangarei

Elected Members: Her Worship the Mayor Sheryl Mai
(Chairperson)

Cr Gavin Benney

Cr Vince Cocurullo

Cr Nicholas Connop

Cr Ken Couper

Cr Tricia Cutforth

Cr Shelley Deeming

Cr Jayne Golightly

Cr Phil Halse

Cr Greg Innes

Cr Greg Martin

Cr Anna Murphy

Cr Carol Peters

Cr Simon Reid

For any queries regarding this meeting please contact
the Whangarei District Council on (09) 430-4200.

1. Apologies

2. Reports

2.1. Placemaking Programme Update - Draft Hikurangi and Tikipunga Actions 1

2.2. Review of Draft LTP and supporting documents 63

3. Closure of Meeting

2.1 Placemaking Programme Update

Meeting: Council Briefing
Date of meeting: 15 June 2021
Reporting officer: Alicia Lawrie (Strategic Urban Designer)

1 Purpose

Update elected members on the Hikurangi and Tikipunga Placemaking Plans:

- Present the draft actions developed for the Hikurangi and Tikipunga Placemaking Plans.
- Seek comfort from elected members on the approach to the third round of community engagement

2 Background

On 20 February 2020 at the Strategy, Planning & Development Committee meeting, elected members made the decision to begin the Placemaking Programme (formerly Spatial Planning Programme) in Tikipunga and Hikurangi. This decision was based on several strategic drivers:

- Population growth (current and projected)
- Identified growth (historical and future development potential)
- Infrastructure (existing and future infrastructure issues and opportunities)
- Previous planning (amount of planning within the last 10 years)
- Community readiness (active community groups and requests for spatial planning).

At the Council Briefing on 25 August 2020 the feedback received for the first round of engagement was presented to elected members. This included a summary of feedback report that identified key themes for Hikurangi and Tikipunga which would be used to inform the development of the placemaking plans and help lead discussion.

At the Council Briefing on 16 December 2020 the feedback received for the second round of engagement was presented to elected members along with the summary of feedback reports for both Hikurangi and Tikipunga. These reports identified key opportunities and actions to include within the plans.

Since December we have been developing the draft Placemaking plans and have continues to work alongside the community, stakeholders and partners.

3 Discussion

3.1 The Placemaking Programme

The Placemaking Programme is a response to the growth and changes that are happening in the Whangarei District. While we have often planned for growth at a District level, what has been missing is the understanding of what this growth means for individual communities and neighbourhoods. A 'one size fits all' approach is not the best way forward for our diverse District because each place is different. Communities have their own set of qualities, unique characteristics and people who make them special.

As places grow, we need to plan ahead ensuring communities can accommodate the increasing number of residents, but are also well connected, have a high standard of amenity and can easily access services such as education, health and public open spaces.

The placemaking plans seek to accommodate and manage future growth while also ensuring future community outcomes and wellbeing are maintained and enhanced. They are intended to be a shared vision between council, community, hapū, developers and other entities.

3.2 Process



We have completed both Stage 1 (Set Direction) and Stage 2 (Testing and Developing) of our placemaking process which included our first and second rounds of community engagement. We are now in Stage 3 (Final Plan) of the placemaking plan process.

Following the second round of engagement in November 2020, we have been working to develop the draft placemaking plan actions for Hikurangi and Tikipunga. These have been informed by:

- Community feedback received from both rounds of engagement
- Internal discussions with infrastructure, planning, transport and community development.
- External discussions with key stakeholders and other central government agencies.

We have also been engaging with hapū and hapori māori in Tikipunga and Hikurangi. This includes the development of a whakaaro ahurea report for each location, identifying and capturing uara aurea (cultural values) to inform the actions and content within the placemaking plans.

3.3 Draft actions

The draft actions for the Hikurangi Placemaking Plan (Attachment 1) and the Tikipunga Placemaking Plan (Attachment 2) have been attached for discussion and feedback. These actions are still subject to minor changes as a result of internal review.

The actions within the placemaking plans are grouped around specific areas of focus.

Actions are also structured around who leads/drives them, whether it be WDC (or other government agencies) community driven or outcomes to be delivered through development.

When looking at the timing and implementation of the action, we have moved away from short, medium- and long-term actions. Instead each action will fall into one of the following:

Implementation / Timing	Description
Ongoing	Refers to projects or initiatives which have started or are a part of an ongoing programme of work.
Funded	Projects which have funding within the Long-Term Plan (LTP). Timeframe is typically 0 - 3 years.
Planned	Projects which have been identified within the Long-Term Plan, or within other plans or strategies. Timeframe is typically 3 - 10 years.
Strategic	Idea or concept that requires further investigation. Not currently funded or planned for. Timeframe is typically 10 - 30 years, however further investigation can inform earlier timeframes.
Guidance	Outcomes and actions which are informed by development or the private sector. Timing and funding not informed by council.

3.4 Community toolkit

The placemaking plans are intended to be shared visions that Whangarei District Council, the community, hapū, developers and other external agencies can all work towards achieving.

There is a recognition that some of the actions require support, energy and drive from the community and community groups to ensure they are achieved. Throughout the development of the placemaking plans and engagement with the community, thought has been put into what support will be available for those who have been involved in the development of the plan once it is finalised. Furthermore, engagement with the community has shown that there is a need for more guidance on the opportunities and 'tools' available for communities who wish to drive actions and implementation.

Within the placemaking plans we will be developing a toolkit which will direct community groups to the guidance, information and tools they can use to work towards the outcomes and actions set out in these placemaking plans.

The community toolkit will set out support available from the Whangarei District Council along with other government agencies and social organisations. This toolkit is designed to bring an awareness of the different types of the support available to assist community groups to implement change in their respective communities.

3.5 Development deliverables / guidance

The actions include development guidance and deliverables to inform good urban design and placemaking outcomes within areas of future growth (greenfield subdivision) and redevelopment (intensification). This will also signal future collaboration between council and private developers.

3.6 Third round of engagement

The third and final round of engagement is proposed to be over a 3-week period from Wednesday 30th June to Wednesday 21st July. The aim of the third round of engagement will be to seek feedback on the draft Hikurangi Placemaking Plan and draft Tikipunga Placemaking Plan. Engagement methods will include an open feedback form for submissions on the placemaking plans, as well as meetings/workshops as requested.

We will also be seeking feedback from Council advisory groups, key community groups and external stakeholders and relevant central government agencies.

Feedback from the third round of engagement will inform the final Hikurangi and Tikipunga Placemaking Plans. We are aiming for final adoption in August.

3.7 Waipu and Parua Bay Placemaking Plans

As we proceed to finalise the Hikurangi and Tikipunga Placemaking Plans we have begun the process of reaching out to groups in Waipu and Parua Bay. This has been initiated through preliminary meetings with the Ward Councillors and will be followed up with direction communication to the relevant community groups and organisations.

3.8 Feedback needed from today's briefing

The purpose of today's briefing is to get feedback from Elected Members on:

- The draft actions in Attachment 1 and 2
- The propose community consultation as outlined in section 3.6.

4 Attachments

Attachment 1 - Draft Actions - Hikurangi Placemaking Plan for discussion

Attachment 2 - Draft Actions - Tikipunga Placemaking Plan for discussion

Other attachments to be provided prior to Council Briefing:

- Draft Hikurangi Placemaking Plan
- Draft Tikipunga Placemaking Plan

Hikurangi Placemaking Plan

Draft Actions - Full Suite

Tuesday 15th June - Council Briefing

Below are the draft actions for the Hikurangi Placemaking Plan for discussion and feedback at the Council Briefing - Tuesday 15th June 2021. These actions are still subject to minor changes as a result of internal review.

The actions within the placemaking plans are grouped around specific areas of focus.

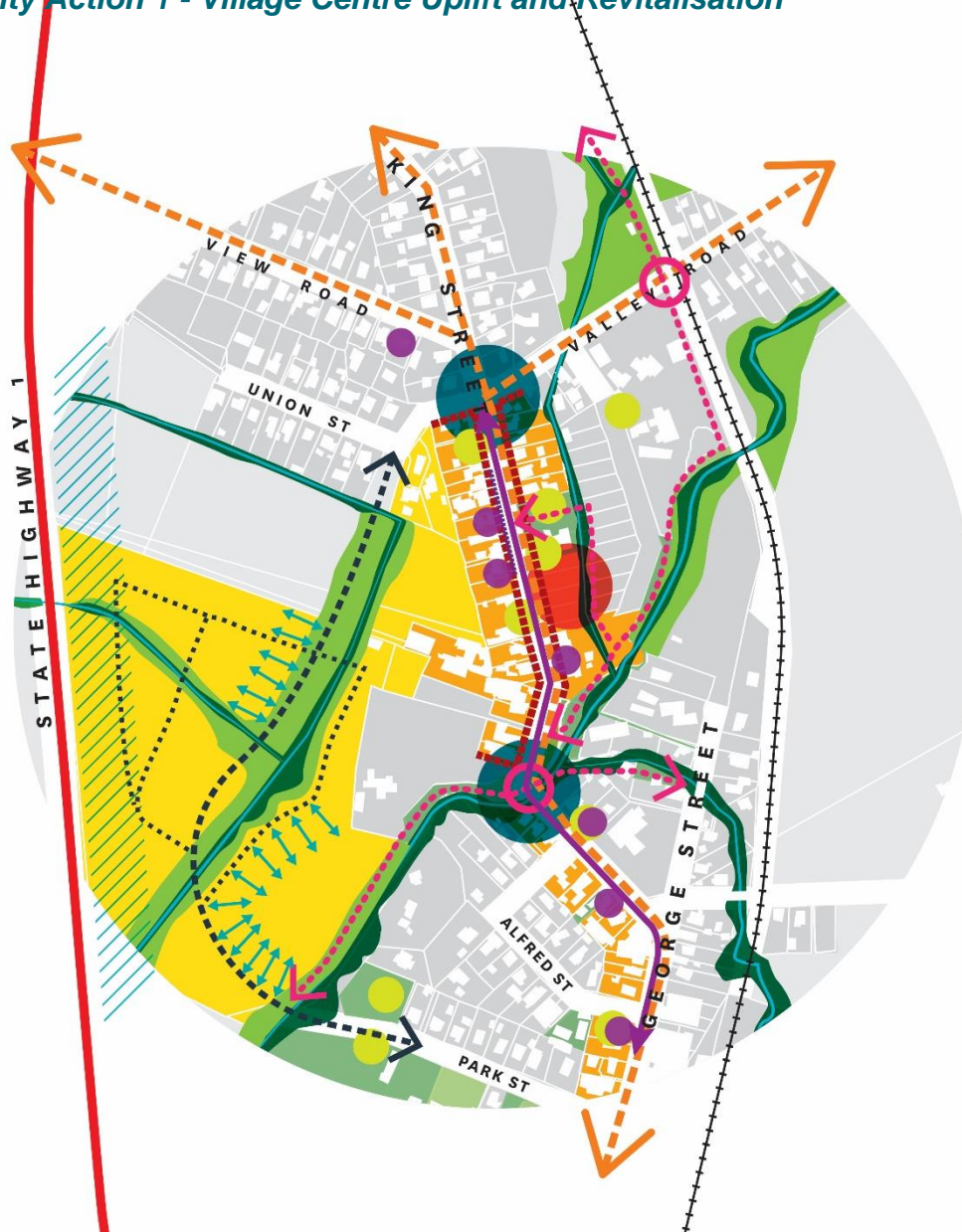
Actions are also structured around who leads/drives them, whether it be WDC (or other government agencies) community driven or outcomes to be delivered through development.

When looking at the timing and implementation of the action, we have moved away from short, medium- and long-term actions. Instead each action will fall into one of the following:

Implementation / Timing	Description
Ongoing	Refers to projects or initiatives which have started or are a part of an ongoing programme of work.
Funded	Projects which have funding within the Long-Term Plan (LTP). Timeframe is typically 0 - 3 years.
Planned	Projects which have been identified within the Long-Term Plan, or within other plans or strategies. Timeframe is typically 3 - 10 years.
Strategic	Idea or concept that requires further investigation. Not currently funded or planned for. Timeframe is typically 10 - 30 years, however further investigation can inform earlier timeframes.
Guidance	Outcomes and actions which are informed by development or the private sector. Timing and funding not informed by council.

*Note, it is increasingly likely that Waka Kotahi will not subsidise some Actions that are currently designated as 'Funded'. The status of these Actions will be reviewed once Waka Kotahi funding is confirmed, most likely in August or September. Some Actions may shift into the 'Planned' or 'Strategic' categories as a result of this process.

Priority Action 1 - Village Centre Uplift and Revitalisation



Key / Context

- State Highway
- Railway Line
- Rivers & Streams
- Council Green Space
- Other Green Space
- Key Facilities & Amenities
- Hikurangi Village Centre
- Future Hikurangi village expansion (zoned land)

WDC Projects & Initiatives

- Footpath improvements on key pedestrian streets
- Identification of heritage buildings and character assessments
- New off-street walking and cycling connections
- Development of key pedestrian and cyclist crossing points

Community Driven Initiatives

- Development of a Hikurangi Heritage Trail
- King Street Opportunity site
- Riparian planting strip (indicative)
Focus this on existing council reserves along Mangawero Stream

Development Deliverables

- Redevelopment to maintain building line and active frontages
- Restoration of shop fronts & verandahs
- Development of new road connections (indicative)
- Development of reserves around rivers & streams (indicative)
To aid flood mitigation, bio-diversity and connectivity.
- Development to front on to and have a visual connection to new roads, green space & public space.

Improve and uplift the profile, appearance and connectivity of the main streets of Hikurangi Village to celebrate its unique character, promote activity, exchange and walkability and expand on the established community facilities and amenities.

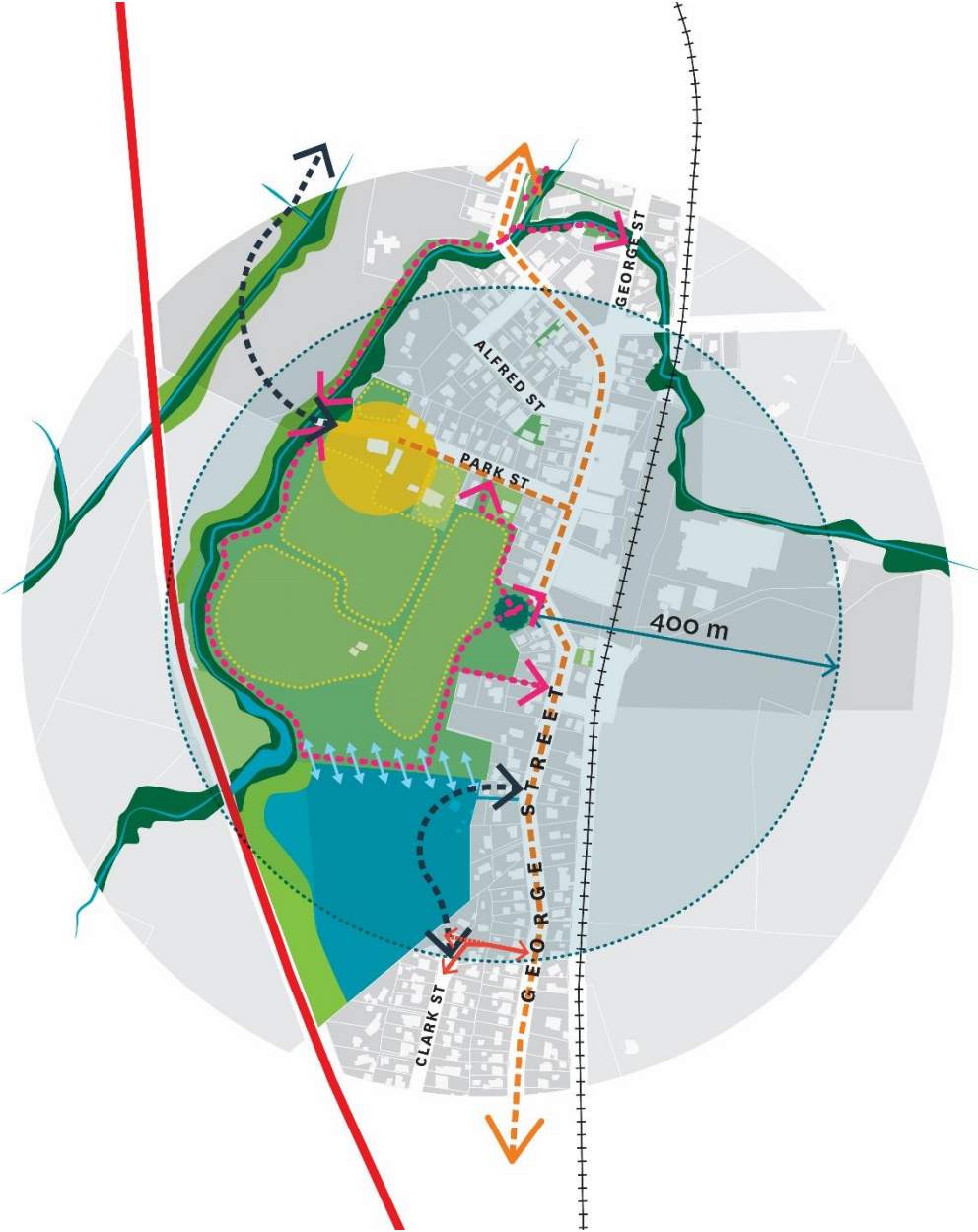
Actions / Opportunities for delivery	Description	Leader / Stakeholders	Timing / Implementation	Trigger	Outcomes
WDC projects & initiatives (and other entities)					
Footpath Improvements	<p>As the footpaths in Hikurangi come up for renewal, upgrade the footpath quality to achieve better walkability, accessibility and positive amenity and social outcomes.</p> <p>Prioritise King Street as an activity street, followed by George Street, View Road and Valley Road as urban connectors.</p>	Council	Ongoing	<p>Footpath Renewals</p> <p>Utility Infrastructure providers</p> <p>One Network Framework (ONF) implementation</p>	<p>Connectivity</p> <p>Heritage & Character</p> <p>Destination</p>
Identification of heritage buildings and character assessments	<p>As part of future District Plan reviews consider identifying key buildings which have unique heritage character and contribute to Hikurangi's history.</p> <p>Identify options to protect these buildings through the District Plan or other identified mechanisms.</p>	Council	Funded	Future District Plan reviews	<p>Heritage & Character</p> <p>Destination</p>
Walking & Cycling Connection along Mangawhero stream and the Railway line	Create a walking and cycling connection between Park Street, King Street and Valley Road alongside	Council	Strategic	Walking and Cycling Strategy Review	<p>Connectivity</p> <p>Heritage & Character</p> <p>Destination</p>

Actions / Opportunities for delivery	Description	Leader / Stakeholders	Timing / Implementation	Trigger	Outcomes
	<p>Mangawhero Stream to better connect Hikurangi village to the wider residential area and key amenities such as Hikurangi School, and the Hikurangi Sports Park.</p> <p>Within Hikurangi Village prioritise connections:</p> <ol style="list-style-type: none"> 1. Valley Road to Village Centre 2. King Street to Park Street along Mangawhero Stream 3. King Street to George Street. 			Walking and cycling connection from Lake Waro to Valley Road.	
Road crossings walking and cycling	<p>Develop safe and accessible crossing points for pedestrians and cyclists at key roadway junctions along the blue/green network.</p> <p>Locations are:</p> <ol style="list-style-type: none"> a. Valley Road b. King Street 	Council	Strategic	Implementation of walking and cycling connections.	Connectivity Destination
Community projects & initiatives					
Hikurangi Heritage Trail	Work with the Northland Inc. to support the Hikurangi museum	Community Northland inc.	Ongoing	Community drive	Connectivity Heritage & Character

Actions / Opportunities for delivery	Description	Leader / Stakeholders	Timing / Implementation	Trigger	Outcomes
	and community in the development and promotion of a heritage trail within the Hikurangi village centre.	Council (signs/ infrastructure)		Support and relationship with Northland inc.	Destination
King Street Opportunity Site	Work with the community to purchase and develop the site next to Hikurangi memorial hall . Development is dependent on community drive and fundraising and should: <ul style="list-style-type: none"> a. Contribute to an attractive village centre with active frontages and public space. b. Be a continuation of the community hub surrounding Hikurangi memorial hall. 	Community Council	Strategic	Community drive Sale of land	Heritage & Character Destination
Development deliverables					
Hikurangi shop frontages and verandahs	As redevelopment occurs, WDC will work with property owners in the uplift and restoration of Hikurangi shop frontages and verandahs , to maintain Hikurangi's unique character and village feel.	Developers	Guidance	Redevelopment WDC footpath renewals programme	Connectivity Heritage & Character Destination

Actions / Opportunities for delivery	Description	Leader / Stakeholders	Timing / Implementation	Trigger	Outcomes
New Road Connection Union Street to Park Street	<p>Develop a new road which provides a safe connection for both vehicles and pedestrians between Union and Park Street, to better connect future village expansion to the wider area.</p> <p>This road (indicatively shown on the map) should create a direct route, have a footpath on either side and consider appropriate traffic calming.</p>	Developers	Guidance	Development	Connectivity

Priority Action 2 - Hikurangi Sports Hub



Key / Context



 State Highway



 Railway Line



 Rivers & Streams



 Council Green Space



 Other Green Space

WDC Projects & Initiatives



 Footpath improvements on key pedestrian streets



 New off-street walking and cycling connections



 Future playground within 400m (5min walk) of Hikurangi Sports Park



 Improvement of pedestrian only path / connection

Community Driven Initiatives



 Hikurangi sports hub



 Sporting codes and facilities



 Riparian planting strip (indicative)
Focus this on existing council reserves along Mangawero Stream

Development Deliverables



 Development of new road connections (indicative)



 Development of reserves around rivers & streams (indicative)
To aid flood mitigation, bio-diversity and connectivity.



 Development to front on to and have a visual connection to Hikurangi sports park

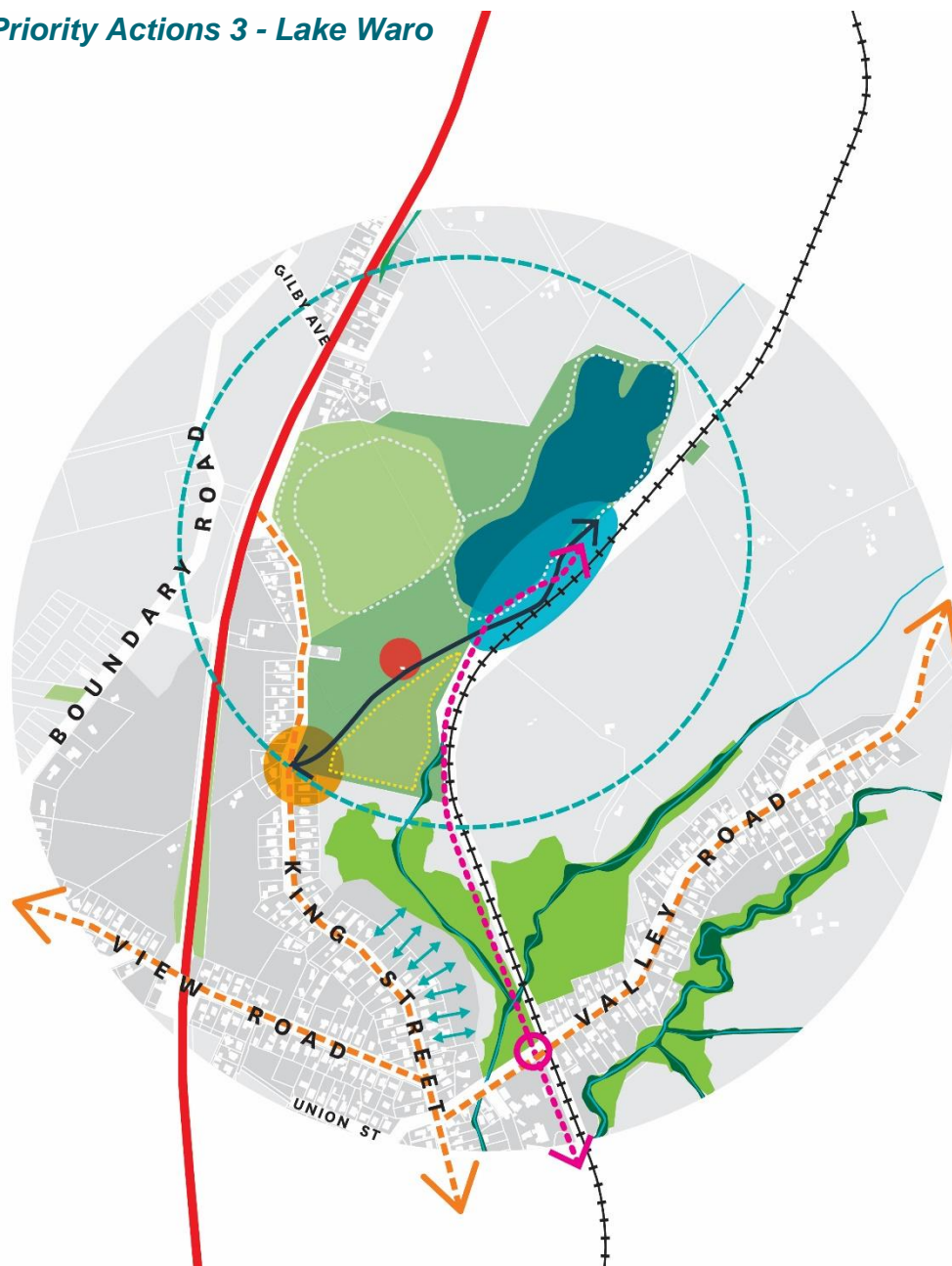
Improve the connectivity and usability of the Hikurangi Sports park and the multiple sporting facilities in the direct area. Encourage diversity in activity, promotion and ease of access for residents and visitors.

Actions / Opportunities for delivery	Description	Leader / Stakeholders	Timing / Implementation	Trigger	Outcomes
WDC projects & initiatives (and other entities)					
Hikurangi Sports Park recreational walking & cycling loop	Create a recreational walking & cycling loop around Hikurangi sports park which links the park to adjoining residents, improves safety, access and activity in this area.	Council	Planned	Mangawero Stream / Park Street connection	Connectivity Destination
New George Street Playground	Develop a new playground within 400m (5min walk) of the Hikurangi sports park to service residents in the southern area of Hikurangi around George, Clark and Park Streets. Wider area - service Street frontage (Safety CPTED)	Council	Strategic	Population increase	Connectivity Destination
Pedestrian paths	Investigate the improvement and realignment of existing pedestrian paths with a focus on safety and connectivity.	Council	Planned	Business Case Redevelopment	Connectivity Heritage & Character Destination
Community projects & initiatives					

Actions / Opportunities for delivery	Description	Leader / Stakeholders	Timing / Implementation	Trigger	Outcomes
Sports hub	<p>Work with sport northland to:</p> <ul style="list-style-type: none"> Assist in establishing a user forum / governing body with the Hikurangi Sports hub and the sporting codes. Undertake a feasibility study / needs assessment. Develop a master plan or development plan for Hikurangi Sports hub including a purpose for the old bowling green site on Park Street. Explore opportunities to increase collaboration and partnerships at an operational level between the existing and future users. <p>Supports / aligns with the <u>Active Recreation and Sport Strategy - action 35.</u></p>	Community Sport Northland Council	Ongoing	User forum has been established.	Connectivity Destination
Development deliverables					
New Connection Clark Street to George Street	As redevelopment and development occurs, create a new multi-modal connection from Clark	Developers	Strategic	Development	Connectivity Destination

Actions / Opportunities for delivery	Description	Leader / Stakeholders	Timing / Implementation	Trigger	Outcomes
	Street to George Street to service new residential development.				
Visual connection to Hikurangi Sports Park	As development occurs, ensure a visual connection and access for residents is maintained to Hikurangi sports Park, ensuring passive surveillance and safety.	Developers	Guidance	Development	Connectivity Destination

Priority Actions 3 - Lake Waro



Key / Context

- State Highway
- Railway Line
- Rivers & Streams
- Council Green Space
- Other Green Space

WDC Projects & Initiatives

- Footpath improvements on key pedestrian streets
- New off-street walking and cycling connections
- Skatepark renewal / upgrade
- Improvement to existing Lake Waro facilities
- Joint management plan and masterplan for Lake Waro and Limestone Reserve.
- Lake Waro opportunity site
Investigate opportunities as part of a Lake Waro masterplan
- Lake Waro entranceway improvements.
- ↗ Lake Waro access road improvements

Community Driven Initiatives

- Riparian planting strip (indicative)
Focus this on existing council reserves along Mangawero Stream

Development Deliverables

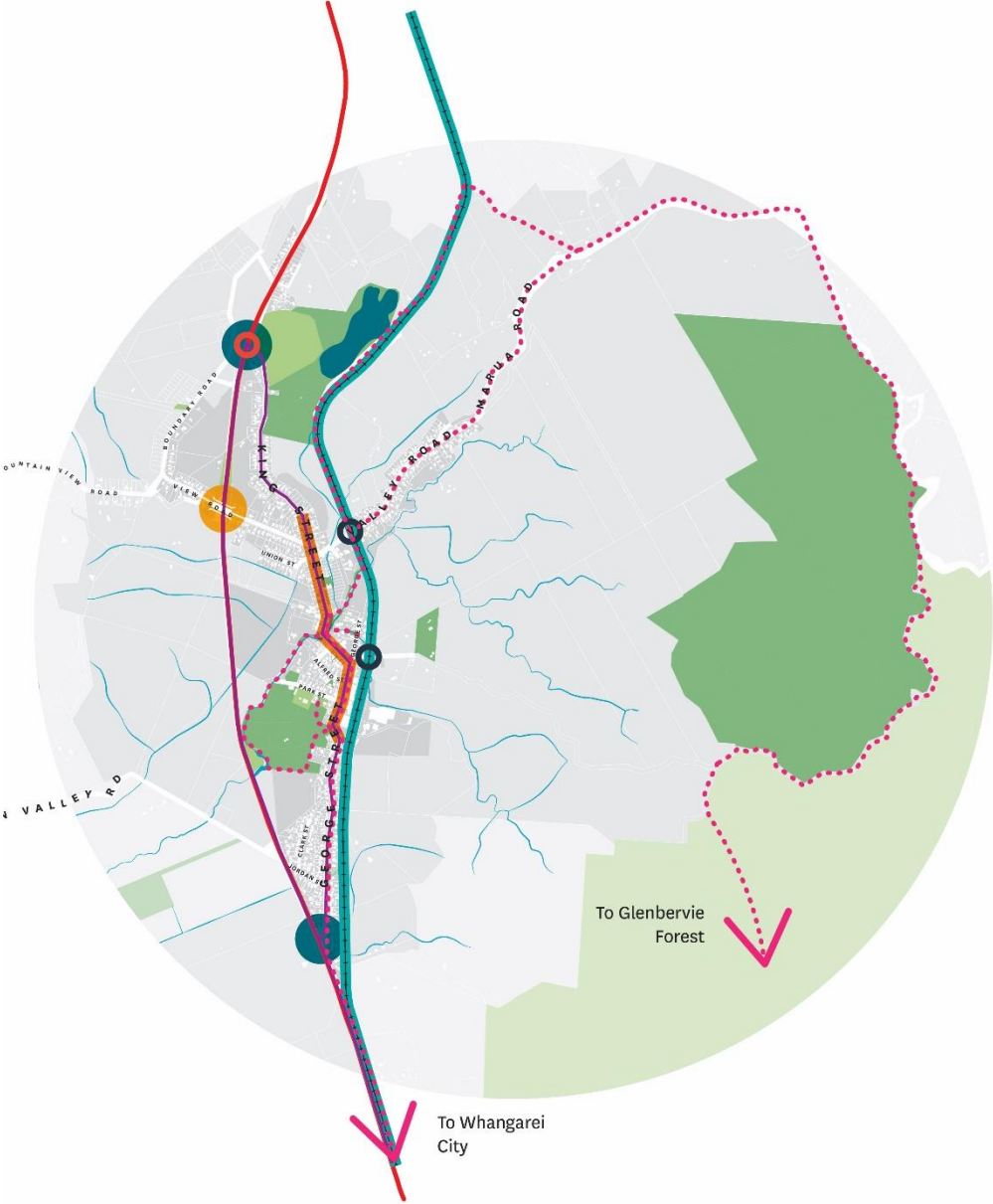
- Development of reserves around rivers & streams (indicative)
To aid flood mitigation, bio-diversity and connectivity.
- ↔ Development to front on to and have a visual connection to walking and cycling connections.

Improve /uplift the Lake Waro area as a key feature and amenity within Hikurangi .

Actions / Opportunities for delivery	Description	Leader / Stakeholders	Timing / Implementation	Trigger	Outcomes
WDC projects & initiatives (and other entities)					
Improve existing facilities	<p>Improve the level of service as well as amenities and facilities within the existing Lake Waro Scenic Reserve. This could include:</p> <ul style="list-style-type: none"> a. Shade and Seating b. Safety and passive surveillance c. Signage and access 	Council	Ongoing	Community Drive	Heritage & Character Destination
Hikurangi skate park renewal	<p>Improve and expand on the existing skatepark facilities near Lake Waro ensure safety, connectivity and good access.</p>	Council	Funded		Connectivity Destination
Walking and Cycling link from Lake Waro to Valley Road	<p>Create a walking and cycling link alongside the railway line which connects Lake Waro to the Hikurangi Village Centre via Valley Road.</p>	Council	Planned	Community drive Lake Waro reserve improvements.	Connectivity Heritage & Character Destination
Joint management Plan and masterplan for Lake Waro and the Limestone Reserve	<p>Work with Doc to develop a joint management plan for the wider Lake Waro and Limestone Reserve areas. This could include:</p> <ul style="list-style-type: none"> a. Protection and enhancement of the natural features. 	Council Doc	Planned	Resources & Funding within WDC and Doc	Connectivity Heritage & Character Destination

Actions / Opportunities for delivery	Description	Leader / Stakeholders	Timing / Implementation	Trigger	Outcomes
	<ul style="list-style-type: none"> b. Vegetation maintenance, clearing and management of Lake Waro and Limestone Reserve c. A masterplan which looks at further opportunities for safety, connectivity, access and additional amenities. d. Action for single management of the sites. 				
Lake Waro entranceway and access road.	Improve the access road and entranceway to Lake Waro improving its visibility, legibility, signage and making it more accessible.	Council	Planned	Funding & Resourcing	Connectivity Heritage & Character Destination

Priority Actions 4 - SH1 Connections



Key / Context

- State Highway
- Railway Line
- Rivers & Streams
- Council Green Space
- Other Green Space

WDC Projects & Initiatives

- Walking & cycling connections
- Hikurangi bus service improvements
- SH1 / King Street intersection safety improvements
- Investigate improvements to View Road Bridge over SH1
- Railway line intersection safety improvements
- Future commuter rail

Community Driven Initiatives

- Hikurangi entranceways and arrivals
- Hikurangi streetscape improvements and traffic calming

Improve connectivity, safety between Hikurangi village and SH1.

Actions / Opportunities for delivery	Description	Leader / Stakeholders	Timing / Implementation	Trigger	Outcomes
WDC projects & initiatives (and other entities)					
Walking and cycling connection through Glenbervie Forest	Create a walking and cycling connection through Glenbervie forest which links Hikurangi to Tikipunga, Glenbervie and the wider Tutukaka coast.	Council	Strategic	Implementation of local Hikurangi walking & cycling connection. Implementation of Tikipunga to Glenbervie forest connection	Connectivity Destination
Hikurangi bus service improvements	Work with NRC to support the continuous improvement of the Hikurangi bus service by: <ul style="list-style-type: none"> a. Improvements to availability and frequency. b. Development of bus infrastructure such as bus stops. c. Promotion of trips to Hikurangi as well as from Hikurangi to town 	NRC Council	Planned	Community Drive Increased patronage NZTA funding	Connectivity Destination
SH1 Northern Intersection safety improvements	Improve safety and sightlines at the State Highway 1 / King Street intersection north of Hikurangi. This will include: <ul style="list-style-type: none"> a. Vegetation removal and maintenance 	Waka Kotahi Council	Strategic	Waka Kotahi business case Community Drive	Connectivity Destination

Actions / Opportunities for delivery	Description	Leader / Stakeholders	Timing / Implementation	Trigger	Outcomes
	b. Investigation of the reconfiguration of the intersection				
View Road Bridge over SH1	Work with Waka Kotahi on a business case for changes to the View Road bridge over SH1 , to allow for passage of heavy vehicles which are currently directed through the Hikurangi Village centre.	Waka Kotahi Council	Strategic	Waka Kotahi Business Case Community Drive	Connectivity Heritage & character Destination
Hikurangi to Whangarei SH1 walking and cycling connection	Formalise a walking and cycling connection along SH1 which connects Hikurangi to Whangarei city via the Kamo shared path.	Waka Kotahi Council	Strategic	WDC Walking and cycling strategy SH1 safety improvements Regional walking & cycling strategy Northland integrated walking and cycling implementation plan	Connectivity Heritage & Character Destination
Railway line railway crossings	Improve safety for pedestrians and vehicles at railway crossings . Railway crossings are located at: a. Valley Road b. Hill Street	Council Kiwi Rail	Strategic	Railway use Frequency of rail	Connectivity Destination
Park & Ride	Investigate opportunities for park and ride within Tikipunga or Kamo to service Hikurangi residents. Park and ride facilities should be:	NRC Council	Strategic	Community Drive Supporting infrastructure Funding & Resourcing	Connectivity Diversity & Character Change

Actions / Opportunities for delivery	Description	Leader / Stakeholders	Timing / Implementation	Trigger	Outcomes
	<ul style="list-style-type: none"> In a location which is along the bus route to ensure easy access. Be secure and safe for both pedestrians and vehicles. 				
Commuter rail	Explore opportunities for future commuter rail between Hikurangi and Whangarei	Council Kiwi Rail	Strategic	Population increase Investment in rail infrastructure	Connectivity Heritage & Character Destination
Community projects & initiatives					
Hikurangi destination marketing	Work with Northland inc to support the community in the promotion and marketing of Hikurangi village . Focus on upskilling and education as well as tying into existing marketing streams with twin coast discovery route/ the blue lagoon destination.	Northland inc. Council Community NZTA	Ongoing	Community Drive Northland inc. resource and funding Northland inc support programmes / education initiatives	Heritage & Character Destination
Hikurangi entranceways and arrivals	Work with the community to build on the development of unique arrivals into Hikurangi using gateways, visual landmarks and wayfinding signage to highlight Hikurangi's unique character and key features and amenities.	Community Council	Strategic	Community Drive	Connectivity Heritage & Character Destination

Actions / Opportunities for delivery	Description	Leader / Stakeholders	Timing / Implementation	Trigger	Outcomes
Hikurangi streetscape improvements and traffic calming	Work with the community to develop a unique streetscape that celebrates Hikurangi's character, creates vibrancy and activity as well as calms traffic and driver behaviour.	Community Council	Strategic	Changes to View Road Bridge over SH1	Connectivity Heritage & Character Destination

Other Actions

Actions / Opportunities for delivery	Description	Leader / Stakeholders	Timing / Implementation	Trigger	Outcomes
WDC projects & initiatives (and other entities)					
District plan zoning	<p>Include identified future growth areas (20-30years) within future District Plan zoning as part of the district plan review process.</p> <p>Include consideration of appropriate rural subdivision. This should be considered where:</p> <ul style="list-style-type: none"> • additional capacity is required, and intensification is not happening. • intensification goals are not being compromised. • there is appropriate infrastructure provision. 	Council	Planned	Future District Plan reviews	Connectivity Diversity & Character
Dog control	<p>In response to community concerns on dog behaviour and roaming dogs, review our Dog Management Policy Bylaw.</p>	Council	Planned	Community drive	Heritage & Character
Hikurangi Wairepo	<p>Work with hapu as kaitiaki to meet the environmental, cultural and ecological protection outcomes of the Hikurangi swamp including</p>	Community Hapu WDC Doc NRC	Funded	Pump renewals / maintenance Central government funding.	Connectivity Heritage & Character Destination

Actions / Opportunities for delivery	Description	Leader / Stakeholders	Timing / Implementation	Trigger	Outcomes
	<p>the capture and relocation of tuna (eels).</p> <ul style="list-style-type: none"> a. Establish a working group of Council, hapu and scheme holders b. Suspend planned renewals of pumps and pump stations (24 months) until a workable solution can be found c. Provide additional funding support for hapu and kaitiaki initiatives. d. Investigate ongoing support including from central government. 				
Community projects & initiatives					
Gomez Road Opportunity Site	<p>Support the community in the development of a path/trail on Council owned land at Gomez Road (Gomez Park). WDC to support the community through:</p> <ul style="list-style-type: none"> a. grant funding for resource consent fees. b. Further support to be considered within future LTP's. 	Community	Planned	Community Drive Resource Consent to establish the activities on site.	Heritage & Character Destination

Actions / Opportunities for delivery	Description	Leader / Stakeholders	Timing / Implementation	Trigger	Outcomes
Riparian planting	Work with the community and developers to establish riparian planting around our local rivers and streams . Ensure planting maintains safety and passive surveillance and allows for connectivity, and access to rivers in key areas. It should also be considerate and appropriate for flood risk.	Community Council	Ongoing	Community drive	Heritage & Character Destination
Development Deliverables					
New Reserves	Develop new reserves along the flood plains of the river network in Hikurangi village centre. This will aid biodiversity, flood mitigation and connectivity between key amenities and features.	Council Developers	Guidance	Development	Connectivity Heritage & Character Destination
Future greenfield residential development (zoned land)	Focus greenfield development in areas to the west of Hikurangi, between George and King Street, and SH1.	Developers	Guidance	Development	Connectivity Heritage & Character Destination
Future greenfield residential development (20/30 years)	Focus future greenfield development in the land along Valley and Marau Road to the East of Hikurangi.	Council Developers	Guidance	Plan Change Development	Connectivity Heritage & Character Destination
Commercial and industrial expansion within Hikurangi	As part of future district plan changes look for opportunities to identify land for the	Council	Guidance	Future District Plan changes	Connectivity Destination

Actions / Opportunities for delivery	Description	Leader / Stakeholders	Timing / Implementation	Trigger	Outcomes
	expansion of commercial and industrial activities . This will create job creation and enable people to live and work in Hikurangi rather than commute.				
Redevelopment and infill opportunities	Enable infill and redevelopment in the urban areas of Hikurangi which are walkable through: <ol style="list-style-type: none"> Future District Plan changes Guidance for redevelopment. Guidance for historic/heritage buildings. Infrastructure provision 	Council/private	Guidance		Connectivity Heritage & Character Destination
Reverse Sensitivity	As development occurs consider the proximity of residents to commercial activity, SH1, arterial roads, railways lines, industry and sports grounds. Ensure appropriate sound insulation is considered without compromising activity and amenity to residents and the public.	Developers	Guidance	Development Redevelopment	Connectivity Heritage & Character Change

Tikipunga Placemaking Plan

Draft Actions - Full Suite

Tuesday 15th June - Council Briefing

Below are the draft actions for the Tikipunga Placemaking Plan for discussion and feedback at the Council Briefing - Tuesday 15th June 2021. These actions are still subject to minor changes as a result of internal review.

The actions within the placemaking plans are grouped around specific areas of focus.

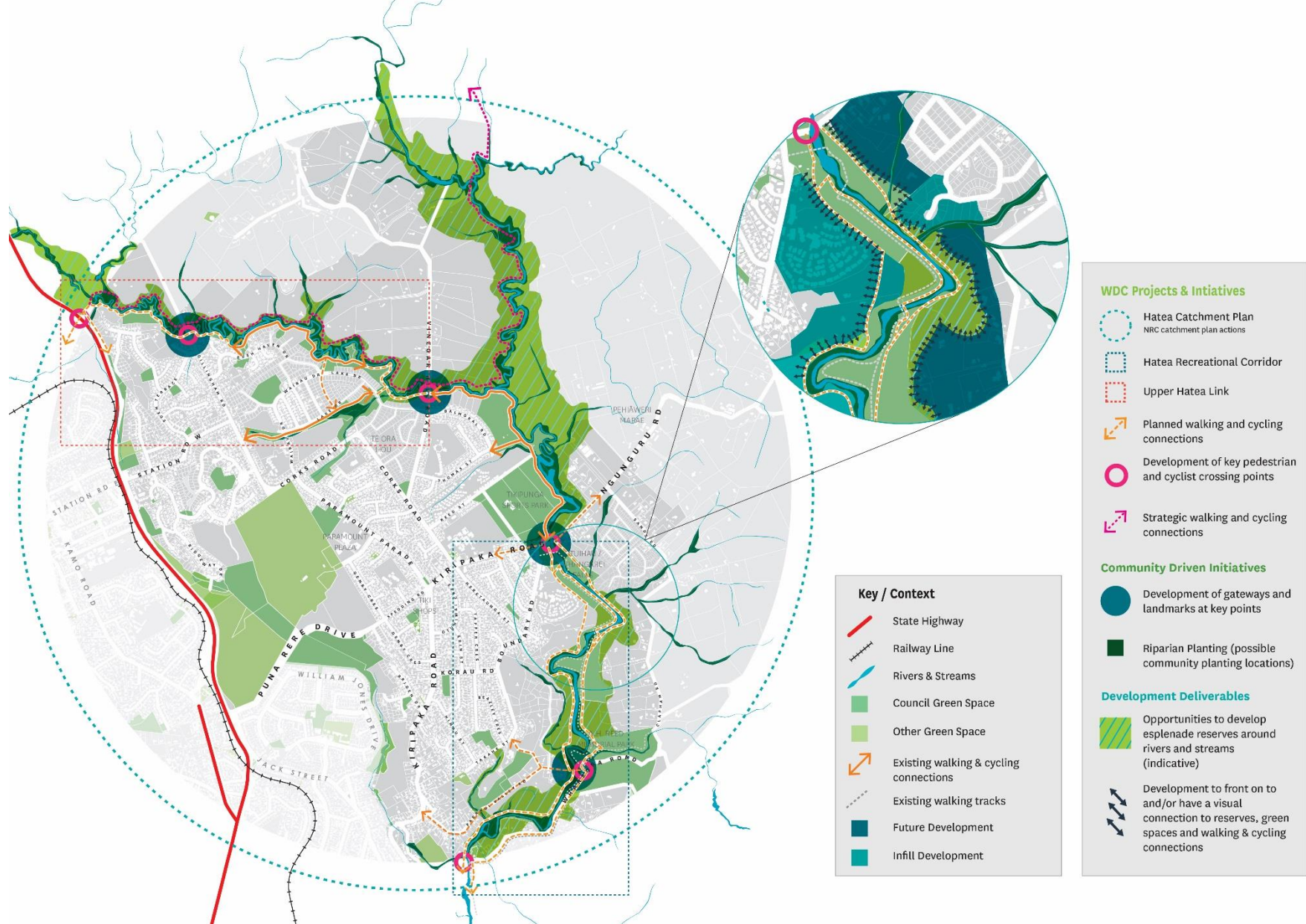
Actions are also structured around who leads/drives them, whether it be WDC (or other government agencies) community driven or outcomes to be delivered through development.

When looking at the timing and implementation of the action, we have moved away from short, medium- and long-term actions. Instead each action will fall into one of the following:

Implementation / Timing	Description
Ongoing	Refers to projects or initiatives which have started or are a part of an ongoing programme of work.
Funded	Projects which have funding within the Long-Term Plan (LTP). Timeframe is typically 0 - 3 years.
Planned	Projects which have been identified within the Long-Term Plan, or within other plans or strategies. Timeframe is typically 3 - 10 years.
Strategic	Idea or concept that requires further investigation. Not currently funded or planned for. Timeframe is typically 10 - 30 years, however further investigation can inform earlier timeframes.
Guidance	Outcomes and actions which are informed by development or the private sector. Timing and funding not informed by council.

*Note, it is increasingly likely that Waka Kotahi will not subsidise some Actions that are currently designated as 'Funded'. The status of these Actions will be reviewed once Waka Kotahi funding is confirmed, most likely in August or September. Some Actions may shift into the 'Planned' or 'Strategic' categories as a result of this process.

1 Areas of focus - Upper Hatea Blue/Green Network



Upper Hatea Blue/Green Network Actions

Create a continuous network of public space and stormwater reserves along the flood plains of the Hatea River, Waitaua Stream and Putanui Stream. To be used for to improve connectivity, and access, walking and cycling, flood mitigation, bio diversity, water quality improvements and community and recreational amenity.

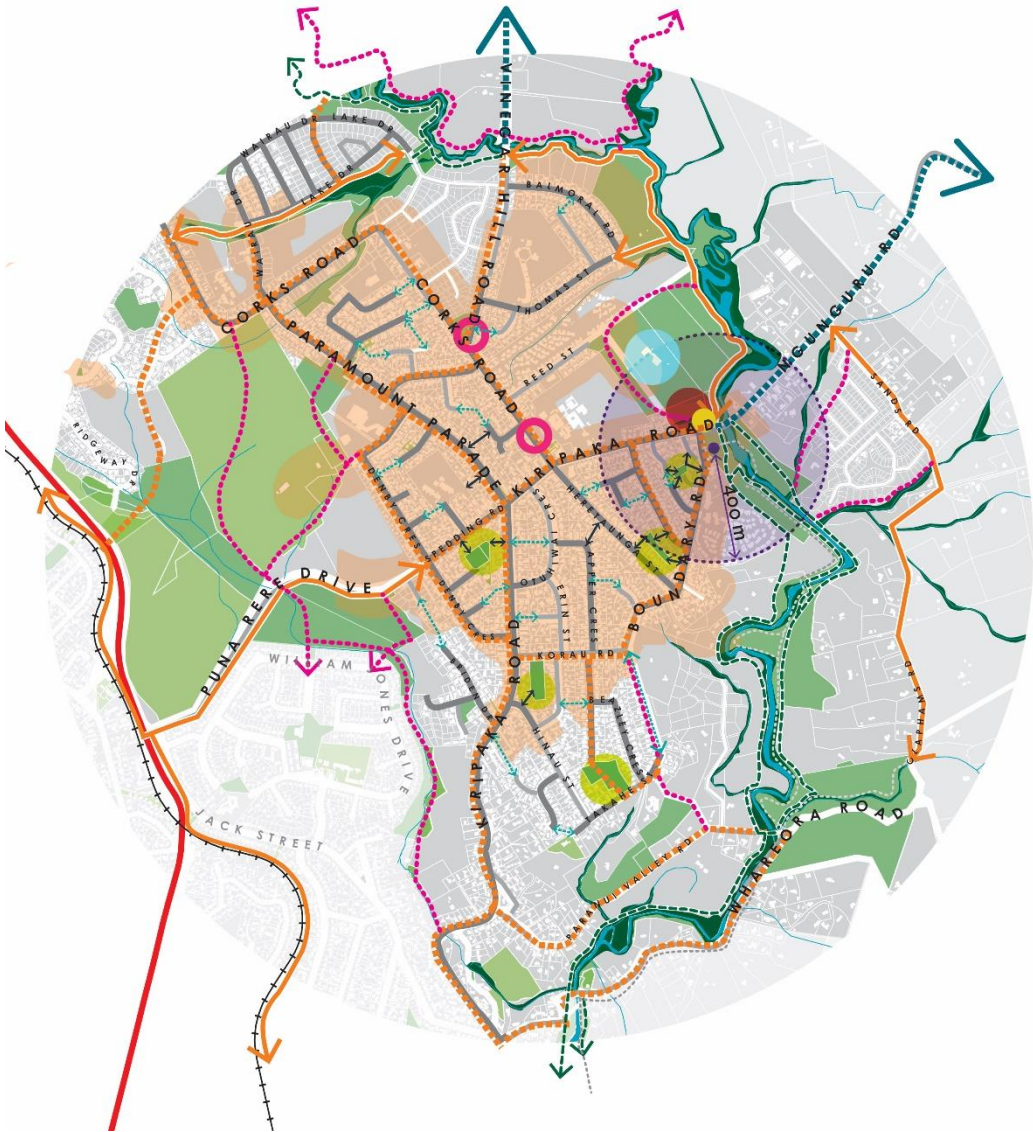
Actions / Opportunities for delivery	Description	Leader / Stakeholders	Timing / Implementation	Trigger	Outcomes
WDC projects & initiatives					
Upper Hatea Link	Develop the upper Hatea walking and cycling link which will connect Vinegar Hill, Totara Parklands and Gillingham Road to Tikipunga sports Park and Springs Flat.	Council	Funded Strategic	Development Funding & Resourcing	Connectivity Diversity & Character Change
Hatea Recreational Corridor	Develop a more formalised walking and cycling connection from Whangarei Falls to A.H. Reed Memorial Park and Whareora Road , connecting Tikipunga to the Whangarei City Centre and Waterfront.	Council	Planned	Resourcing & Funding Development	Connectivity Diversity & Character Change
Pedestrian and Cyclist crossing points	Develop safe and accessible crossing points for pedestrians and cyclists at key roadway junctions along the blue/green network. Priority locations include:	Council	a. Planned b. Funded c. Planned d. Strategic e. Strategic	Implementation of walking and cycling connections. Funding & Resourcing Development of SH1 intersection	Connectivity Diversity & Character Change

Actions / Opportunities for delivery	Description	Leader / Stakeholders	Timing / Implementation	Trigger	Outcomes
	<ul style="list-style-type: none"> a. Kiripaka Road b. Vinegar Hill Road c. Whareora Road d. Gillingham Road e. SH1 				
Waitaua and Putanui Stream Walking and Cycling	As development occurs, work with landowners and developers to secure land to create opportunities for access and walking and cycling connections alongside Waitaua and Putanui Streams.	Council Developers	Strategic	Development	Connectivity Diversity & Character Change
Community projects & initiatives					
Hatea Catchment Plan	<p>Support NRC and the Otuihau Working Group in their work with land owners to implement the actions outlined in the <u>Hatea Catchment Plan</u>, establishing fences and riparian planting around streams and rivers to create better water quality and biodiversity outcomes.</p> <p>Achieve this through:</p> <ul style="list-style-type: none"> a. Education and awareness of funding opportunities. 	Community NRC	Ongoing	Land owner buy-in and support	Connectivity Diversity & Character Change

Actions / Opportunities for delivery	Description	Leader / Stakeholders	Timing / Implementation	Trigger	Outcomes
	b. Support community planting on council owned land				
Gateways	WDC to work alongside the community to create gateways , visual landmarks to highlight significant access points and features along the upper Hatea Blue/Green Network.	Community	Ongoing	Community drive Walking and cycling link implementation	Connectivity Diversity & Character
Riparian and community planting.	WDC to work with and support the community to establish riparian planting around our local rivers and streams. Ensure planting maintains safety and passive surveillance and allows for connectivity, and access to rivers in key areas (encourage the prioritisation of these initiatives on council owned land).	Community Council	Ongoing	Community driven	Diversity & Character Change
Development deliverables					
New reserves and green spaces along river edges.	As subdivision occurs work with developers to secure land for continuous esplanade reserves . This will create opportunity for:	Developer	Guidance	Development	Connectivity Diversity & Character Change

Actions / Opportunities for delivery	Description	Leader / Stakeholders	Timing / Implementation	Trigger	Outcomes
	<ul style="list-style-type: none"> walking and cycling connections amenity and recreational activities for current and future residents. biodiversity and flood management benefits. 				
Orientation and relationship of development adjacent to walking and cycling network.	Any new development which is adjacent to public spaces and walking and cycling connections should be designed in a way that creates a visual connection , providing activity, safety and amenity.	Developers	Guidance	Development	Connectivity Character & Diversity Change

2 Area of Focus 2 - Urban Connectivity



Key / Context



 State Highway



 Railway Line



 Rivers & Streams



 Council Green Space



 Other Green Space



 Existing walking & cycling connections



 Existing walking tracks

WDC Projects & Initiatives



 Footpath improvements on key walking & cycling streets



 Opportunities to improve existing neighbourhood park access



 Walking and cycling connections (Ngunguru, Springs Flat)



 Upper Hatea blue/green network



 Strategic off-road walking and cycling connections



 Future playground (400m - 5min walk)



 Future skatepark



 Future overflow carpark



 Corks Road pedestrian crossings



 Improvement to existing pedestrian only paths

Community Driven Initiatives



 Tikipunga sports hub / home of football

Development Deliverables



 Redevelopment opportunity area



 Opportunity for new connections (Indicative)

Area of Focus 2 - Urban Connectivity Actions

Improve connectivity and walkability within urban Tikipunga ensuring that the streets and footpaths within Tikipunga are safe, accessible and of high amenity.

Actions / Opportunities for delivery	Description	Leader / Stakeholders	Timing / Implementation	Trigger	Outcomes
WDC projects & initiatives					
Footpath improvements	<p>Prioritise footpath improvements on key walking & cycling streets (identified within the map), as they come up for renewal, to improve:</p> <ul style="list-style-type: none"> the quality and accessibility. character and amenity. connectivity and walkability. 	Council	Ongoing	<p>Footpath renewals and maintenance</p> <p>External works by utility & infrastructure providers</p>	<p>Connectivity</p> <p>Diversity & Character</p>
Pedestrian paths	Investigate the improvement and realignment of existing pedestrian paths with a focus on safety and connectivity.	Council	Planned	<p>Business Case</p> <p>Redevelopment</p>	<p>Connectivity</p> <p>Heritage & Character</p> <p>Destination</p>
Kamo Cycleway Connection	Connect Tikipunga to the Kamo shared path by developing a walking and cycling link on Kiripaka Road and Spedding Road.	Council	Planned	<p>Walking & Cycling Strategy Review</p> <p>Puna Rere Drive / Kamo Shared Path business case.</p>	<p>Connectivity</p> <p>Diversity & Character</p> <p>Change</p>

Actions / Opportunities for delivery	Description	Leader / Stakeholders	Timing / Implementation	Trigger	Outcomes
				Funding & Resourcing	
Ngunguru and Tutukaka Coast Walking & Cycling connection	Create a walking and cycling connection along Ngunguru Road which eventually links Tikipunga to the Tutukaka Coast.	Council	Planned	Funding & Resourcing	Connectivity Diversity & Character Change
Playground Whangarei Falls	Develop a new playground or improve and existing playground to service residents around the Whangarei Falls area.	Council	Planned	Population increase Playground development	Connectivity Diversity & Character
Sports Park Carpark	Develop an overflow carpark or reconfigure the existing carpark at the Tikipunga sports park to service both the sports park and Whangarei falls.	Council	Planned	Pedestrian crossing Tikipunga home of football	Connectivity Change
Corks Road Pedestrian Crossings	Create new and safe pedestrian crossings on Corks Road to connect pedestrians to key facilities and amenities such as, Tikipunga high school and Potter Park.	Council	Planned	Funding & resourcing	Connectivity Character & Diversity Change
Access and street frontage to neighbourhood parks	As redevelopment occurs improve street frontage and access to existing green spaces / neighbourhood parks .	Council	Strategic	Redevelopment Land acquisition or land swap	Connectivity Diversity & Character Change

Actions / Opportunities for delivery	Description	Leader / Stakeholders	Timing / Implementation	Trigger	Outcomes
	Neighbourhood parks to include: <ul style="list-style-type: none"> a. Jeeves Park b. Haruru Place Park c. Cobham Place Park d. Korau Park e. Beasley Park 				
Vinegar Hill Walking & Cycling Connections	Create a commuter walking and cycling connection along Vinegar Hill Road and SH1 to connect Springs Flat to Tikipunga.	Council	Strategic	Walking and Cycling Strategy review.	Connectivity Diversity & Character Change
Tikipunga Skate park	Develop a skate park on council owned land and ensure this skate park is easily accessible, with street frontage.	Council	Strategic	Funding Population increase	Connectivity Diversity & Character
Walking and cycling connection along Vinegar Hill Road	Creation of a walking and cycling connection along Vinegar Hill Road to connect Corks Road to the new path.	Council	Strategic	Funding & resourcing	Connectivity Character & Diversity Change
Tikipunga Sports Park Walking and cycling loop	Create a recreational walking and cycling loop around the Tikipunga sports park.	Council	Strategic	Tikipunga sports park improvements	Connectivity Character & Diversity Change
Community projects & initiatives					

Actions / Opportunities for delivery	Description	Leader / Stakeholders	Timing / Implementation	Trigger	Outcomes
Tikipunga home of football	<p>Work with sport northland to:</p> <ul style="list-style-type: none"> • Assist in establishing a user forum / governing body with the Tikipunga home of football and the sporting codes. • Develop a master plan or development plan for Tikipunga Sports Park including additional car parking. • Explore opportunities to increase collaboration and partnerships at an operational level between the existing and future users. <p>Supports / aligns with the <u>Active Recreation and Sport Strategy - action 35.</u></p>	Community Sport Northland WDC	Ongoing Funded	Community drive Funding	Connectivity Diversity & Character
Heritage signs and trails	Support the community in the development and promotion of a heritage trail and/or heritage signs to bring identity and story telling to Tikipunga.	Community Council Northland inc.	Ongoing	Community drive Funding & Resourcing	Connectivity Diversity & Character
Development deliverables					

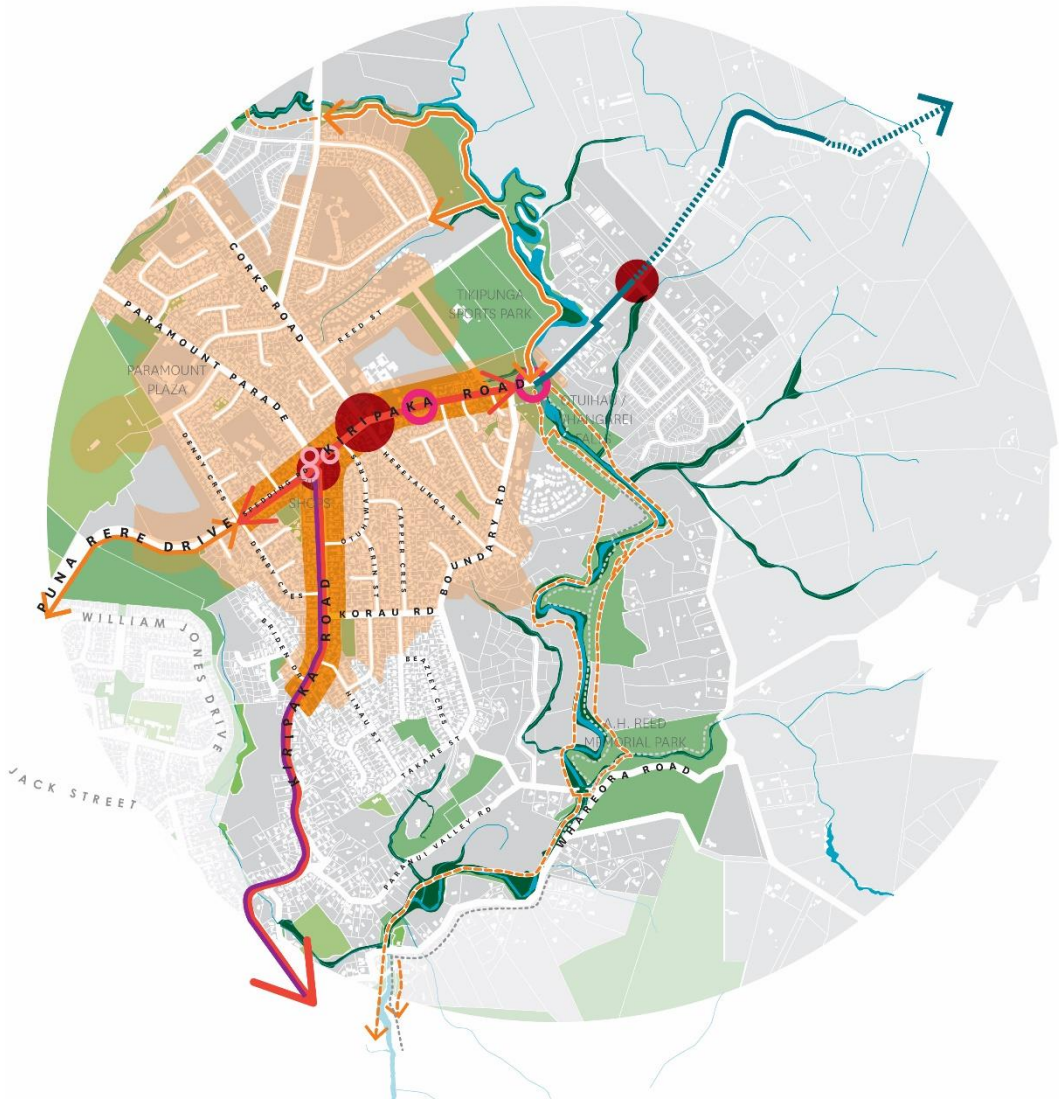
Actions / Opportunities for delivery	Description	Leader / Stakeholders	Timing / Implementation	Trigger	Outcomes
Pedestrian only paths	As redevelopment occurs, work with developers in the creation of urban pedestrian links between existing streets and cul-de-sacs. These could be the creation of new roads to service all transport modes, or, at a minimum, pedestrian only links.	Developers	Ongoing	Redevelopment	Connectivity Diversity & Character
Redevelopment	Focus redevelopment and infill within Tikipunga's walkable catchment (as mapped) to ensure residents have easy access to key facilities, amenities and modes of transport. Encourage and enable a range of housing typologies and dwelling sizes to increase housing choice.	Developers	Guidance	Redevelopment	Connectivity Diversity & Character Change
Building orientation and active frontages	Creating development which positively interacts with the street and/or public space by: <ul style="list-style-type: none"> a. Fronting on to streets and/or public space b. Ensuring residents can overlook and provide passive surveillance to any adjacent public space and streets. c. Position buildings close to the street. 	Developers	Guidance	Redevelopment	Connectivity Diversity & Character Change

Actions / Opportunities for delivery	Description	Leader / Stakeholders	Timing / Implementation	Trigger	Outcomes
	<ul style="list-style-type: none"> d. Following the 'public front, private back' rule so that: <ul style="list-style-type: none"> ○ The building fronts onto the street and buildings across the street. ○ The back of the building faces rear yards and the backs of neighbouring properties. e. Have a clear and accessible entranceway which faces the street. f. Position carparking or the garage beside, behind or underneath the building. 				
Private outdoor space provision	<p>As there is reduced access to private outdoor space within more intense developments ensure appropriate outdoor space and outlook (attractive views) are provided. Outdoor space should be:</p> <ul style="list-style-type: none"> a. Orientated to receive direct sunlight and daylight b. Be accessible to all (preferably at ground 	Developers	Guidance	Redevelopment	Connectivity Diversity & Character Change

Actions / Opportunities for delivery	Description	Leader / Stakeholders	Timing / Implementation	Trigger	Outcomes
	<p>level and accessible from a main living area)</p> <p>c. If private, have appropriate levels of privacy by being:</p> <ul style="list-style-type: none"> ○ Positioned beside or behind the dwelling so it can be easily screened from the street. ○ Fenced or screened from neighbouring windows. 				
Outdoor space	<p>Consider CPTED principles to ensure residents and the public are safe and feel safe.</p> <ul style="list-style-type: none"> a. Ensure the street, public space and/or pedestrian right of ways are overlooked by the buildings. b. Allow for passive surveillance between residents and the public, while balancing residential privacy. c. Ensure boundaries between public and private space is clear 	Developers	Guidance	Redevelopment	<p>Connectivity</p> <p>Diversity & Character Change</p>

Actions / Opportunities for delivery	Description	Leader / Stakeholders	Timing / Implementation	Trigger	Outcomes
	d. Ensure quality and attractive environments that are easy to maintain.				

3 Focus Area 3 - Kiripaka Road



Key / Context



 State Highway



 Railway Line

WDC Projects & Initiatives

 Kiripaka Road as a primary walking & cycling connection

 Complete the footpath connection between Tikipunga, Pehiaweri Marae, and Glenbervie School
Broken connection indicated by the dashed line. Continue as part of the Ngunguru cycleway.

 Upper Hatea blue/green network

 Intersection improvements to enhance safety and function for all transport modes.

 New pedestrian crossings on Kiripaka Road.

 Improvement of existing pedestrian crossings as part of Kiripaka Road roundabout improvements

 Development of bus priority lanes on Kiripaka Road

Development Deliverables

 Redevelopment opportunity area

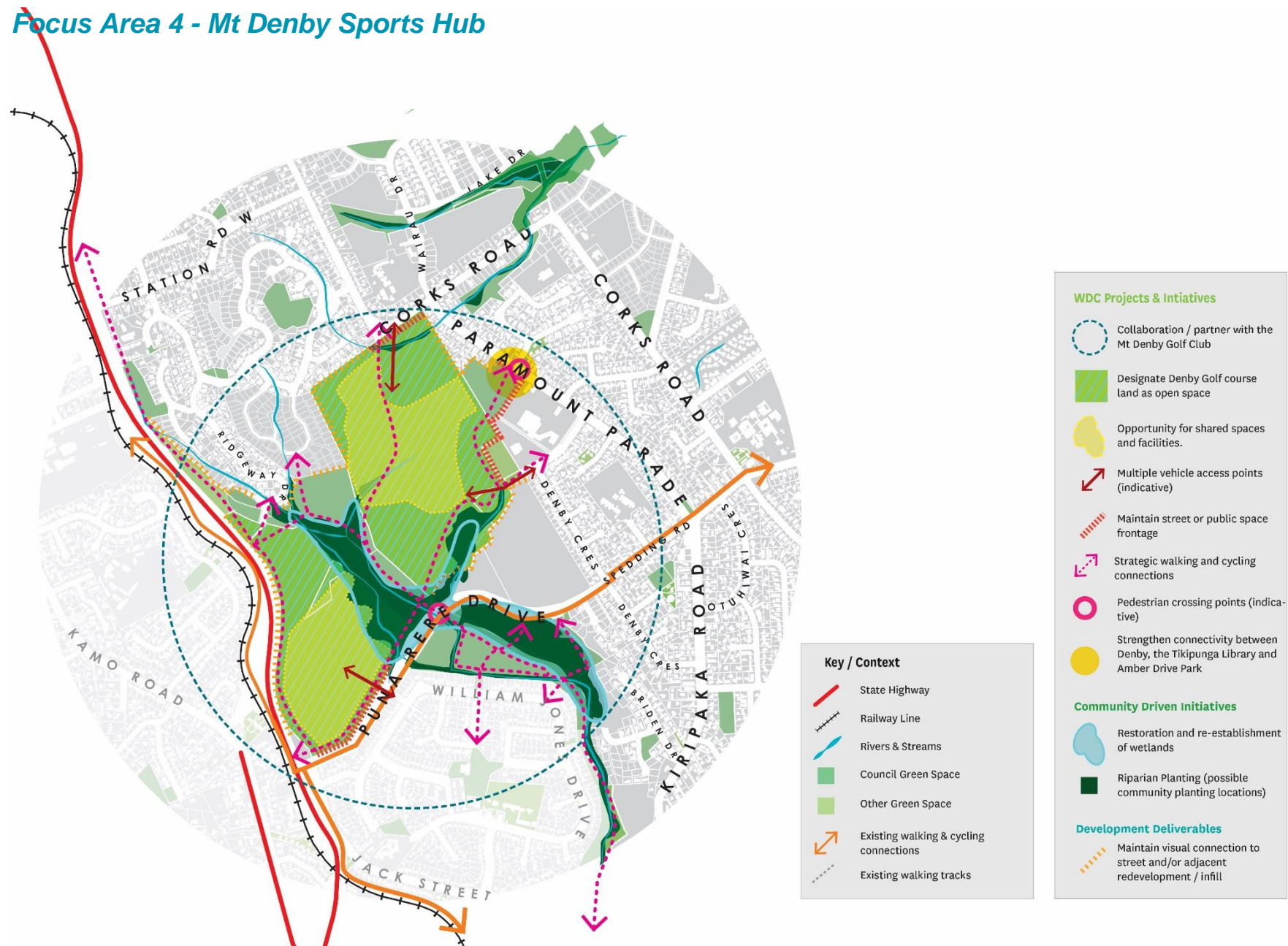
 Redevelopment on Kiripaka Road to have a strong relationship with the street

Actions / Opportunities for delivery	Description	Leader / Stakeholders	Timing / Implementation	Trigger	Outcomes
WDC projects & initiatives (and other entities)					
Pehiaweri and Glenbervie school connection	Create a continuous footpath connection which links Pehiaweri Marae and Glenbervie school to Tikipunga via Ngunguru Road.	Council	Ongoing	Development Funding & Resourcing	Connectivity Character & Diversity
Kiripaka Road Pedestrian crossings	Create new and safe pedestrian crossings on Kiripaka Road to connect pedestrians to key amenities, shops and schools.	Council	Planned	Funding & Resourcing	Connectivity Character & Diversity Change
Kiripaka Road primary walking and cycling connection	Develop Kiripaka Road as a safe walking and cycling connection between Kamo shared path and Upper Hatea Blue/Green Network.	Council	Planned	Network Operating Framework Walking & Cycling Strategy Review	Connectivity Character & Diversity Change
Kiripaka Road Paramount Parade roundabout	Improve the safety and function of the Kiripaka / Paramount Plaza roundabout , improving access to surrounding facilities and making it safer for all users.	Council	Planned	Network Operating Framework Traffic calming business case (Corks Road)	Connectivity Character & Diversity Change
Bus priority lanes Kiripaka Road	Develop bus priority lanes to improve the level of service for	NRC	Planned	Funding Kamo and city centre bus priority lanes	Connectivity Change

Actions / Opportunities for delivery	Description	Leader / Stakeholders	Timing / Implementation	Trigger	Outcomes
	public transport between Tikipunga and the City Centre.				
Heretaunga Street, Corks Road and Kiripaka Road intersection.	Improve the safety and function Corks Road / Kiripaka Road / Heretaunga Street intersection making it safer for all users.	Council	Strategic	Network Operating Framework	Connectivity Character & Diversity Change
Sands Road / Ngunguru Road intersection	As development happens occurs along Sands Road improve the intersection to Ngunguru Road to allow easier movement of all modes.	Council	Strategic	Development Funding	Connectivity Change
Development deliverables					
Development along Kiripaka Road	Residential and commercial development along Kiripaka Road should face the street and be built close to the street . Avoid: a. Positioning garages and carparking in front of building.	Developers	Guidance	Redevelopment	Connectivity Character & Diversity Change

Actions / Opportunities for delivery	Description	Leader / Stakeholders	Timing / Implementation	Trigger	Outcomes
	<ul style="list-style-type: none"> b. Building tall fences or blank walls along the street edge c. Positioning private outdoor space at the front of the buildings. 				

4 Focus Area 4 - Mt Denby Sports Hub



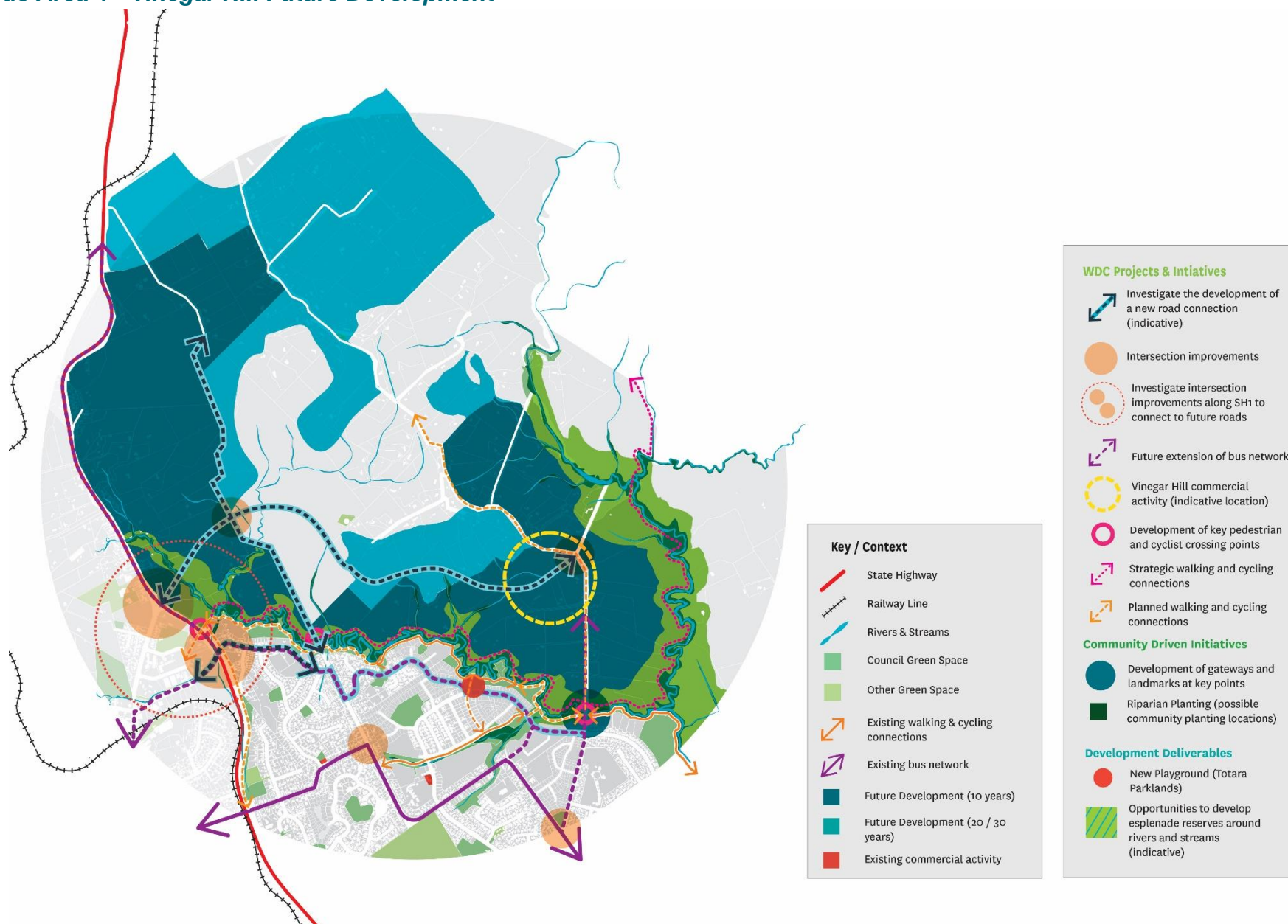
Focus Area 4 - Mt Denby Sports Hub

Actions / Opportunities for delivery	Description	Leader / Stakeholders	Timing / Implementation	Trigger	Outcomes
WDC projects & initiatives (and other entities)					
Mt Denby Sports Hub	<p>Explore opportunities with the Whangarei Golf Club to increase collaboration and partnerships through shared use of spaces and facilities.</p> <p>Ensure the sports hub is designed to:</p> <ol style="list-style-type: none"> be accessible and safe for residents of Tikipunga, Otangarei, Kensington and Kamo, Promote connectivity, walkability, and passive recreation. Have street frontage and be accessible in multiple locations. 	Council	Strategic	<p>Designation of the site as open space</p> <p>Purchase of land</p>	<p>Connectivity</p> <p>Diversity & Character Change</p>
Walking and cycling connections through Denby sports park.	<p>Develop legible and safe walking and cycling connections through the future Mt Denby sports hub which connect to:</p> <ol style="list-style-type: none"> Puna Rere Drive Kamo shared path Paramount Plaza 	Council	Strategic	Mt Denby Sports Hub	<p>Connectivity</p> <p>Diversity & Character Change</p>

Actions / Opportunities for delivery	Description	Leader / Stakeholders	Timing / Implementation	Trigger	Outcomes
	d. Corks Road. e. Tikipunga library				
Walking and Cycling connection along SH1	Develop a walking and cycling connection alongside SH1 to link to the future Upper Hatea Walking and Cycling link.	Council	Strategic	Mt Denby Sports Hub	Connectivity Change
Paramount Parade connection to Denby.	Better connect Tikipunga Library, Amber Park and the future Denby multi-purpose recreational site. This could include: <ul style="list-style-type: none"> a. a pedestrian crossing between the Tikipunga library and Amber Drive Park / Playground b. Improvements to the Totara stands. c. Improvements to the Amber Drive Park Playground. 	Council	Strategic	Mt Denby Sports Hub Playground renewals	Connectivity Diversity & Character
Puna Rere Drive and Otangarei Connection.	Better connect the future Mt Denby Sports Hub to Otangarei and the Otangarei Sports Park, as well as better connecting Otangarei to the schools and shops in Tikipunga.	Council	Strategic	Mt Denby Sports Hub	Connectivity Diversity & Character
Community projects & initiatives					

Actions / Opportunities for delivery	Description	Leader / Stakeholders	Timing / Implementation	Trigger	Outcomes
Re-establishment of wetlands and riparian planting	Work with the community to develop a planting plan and restore wetlands on the site to improve water quality and biodiversity.	Council	Strategic	Mt Denby Sports Hub	Connectivity Diversity & Character Change
Development deliverables					
Visual connection to Denby sports park	As redevelopment occurs, ensure a visual connection is created or maintained between the Mt Denby Sports Hub and adjacent development.	Developers	Guidance	Redevelopment	Connectivity Diversity & Character Change

Focus Area 4 - Vinegar Hill Future Development



Actions / Opportunities for delivery	Description	Leader / Stakeholders	Timing / Implementation	Trigger	Outcomes
WDC projects & initiatives (and other entities)					
Primary bus connection through Totara Parklands	Work with NRC in the development of a bus connection that services Totara Parklands, connecting residents to Tikipunga and the city centre.	NRC WDC	Ongoing Planned	Network Operating Framework (NOF) Development	Connectivity Change
District plan zoning	Include identified future growth areas (20-30 years) and commercial area within future district plan zoning.	Council	Planned	Future District Plan Reviews	Connectivity Diversity & Character
Transport connection from Vinegar Hill to Gillingham Road and SH1	Connect Gillingham Road and Bush Haven Drive to SH1 to service residents of Totara Parklands, Vinegar Hill and Tikipunga.	Council Developers	Planned	Development	Connectivity Change
Intersection improvement Vinegar Hill Road	Improve the Vinegar Hill, Corks Road intersection to service future development along Vinegar Hill Road. Ensure pedestrian safety and connectivity is considered.	Council	Planned	Development Corks Road	Connectivity Change
Continued bus service north of Tikipunga	With the development of new residential areas along Vinegar Hill and Gillingham Road work with NRC to extend the bus network and improve the	NRC WDC	Strategic	Development Provision of facilities and infrastructure.	Connectivity Change

Actions / Opportunities for delivery	Description	Leader / Stakeholders	Timing / Implementation	Trigger	Outcomes
	frequency and coverage to accommodate and service future residents.			Integrated Transport Assessments	
Future transport Connection from Vinegar Hill to State Highway 1	Investigate the creation of a new multi-modal transport connection between Vinegar Hill and State Highway 1 to support and enable future development up Vinegar Hill Road and Gillingham Road.	Council Developers Waka Kotahi	Strategic	Development Waka Kotahi business case & feasibility study	Connectivity Change
Intersections to SH1	As part of the new road connections between Vinegar Hill Road, Gillingham Road and State Highway 1, further investigate improvements to the SH1 intersection , opportunities are either: <ul style="list-style-type: none"> a. Between Great North Road and SH1 b. Between Springs Flat Road and SH1 	Council Waka Kotahi Developers	Strategic	Development of a business case Development of new transport connections	Connectivity Change
Intersection improvement Gillingham Road	Improve the Gillingham Road, Corks Road intersection to service future development along Gillingham Road. Ensure pedestrian safety and connectivity is considered.	Council Developers	Strategic	Development	Connectivity Change
Vinegar Hill Commercial Centre	Identify an appropriate location for future commercial activity to service future residents	Council Developers	Strategic	Development	Connectivity Diversity & Character

Actions / Opportunities for delivery	Description	Leader / Stakeholders	Timing / Implementation	Trigger	Outcomes
	<p>along Vinegar Hill road and to the north of Tikipunga. Steps will include:</p> <ul style="list-style-type: none"> • Create a masterplan to identify an appropriate location • Zone land as part of future district plan reviews • Service within future infrastructure strategies 			Future district plan reviews	Change
Development deliverables					
Playground Totara Parklands	Support the development of a playground within Totara Parklands subdivision	Private	Funded	Funded by developer	Connectivity Diversity & Character Change
Connection Gillingham Road to SH1 West	As development occurs create a transport connection which links Gillingham Road north to Jounneaux Road.	Council Developers	Guidance	Development	Connectivity Change
Open Space and Neighbourhood parks	<p>As subdivision occurs work with developers to secure land for future open space and neighbourhood parks to service residents. This should:</p> <ul style="list-style-type: none"> a. Be well located and connected. 	Developers	Guidance	Development	Connectivity Diversity & Character Change

Actions / Opportunities for delivery	Description	Leader / Stakeholders	Timing / Implementation	Trigger	Outcomes
	<ul style="list-style-type: none"> b. Be useable and accessible. c. Consider additional amenities, recreational activities and play. 				
Visual connection to open and public space	As development occurs adjacent to existing or planned reserves ensure a visual connection is created between the site and adjacent development to maintain safety and activity to this area.	Developers	Guidance	Development	Connectivity Diversity & Character Change
Active street frontages	Ensure development is orientated and accessible from existing and/or new streets.	Developers	Guidance	Development	Connectivity Diversity & Character Change
Density and choice	Develop housing to a range of urban densities and typologies to add to housing choice and accommodate diverse residents.	Developers	Guidance	Development	Connectivity Diversity & Character Change
Roading connections and networks	Create well connected roading networks within new subdivisions, avoiding dead ends and cul-de-sacs.	Developers	Guidance	Development	Connectivity Diversity & Character Change

Actions / Opportunities for delivery	Description	Leader / Stakeholders	Timing / Implementation	Trigger	Outcomes
Connections to adjacent subdivisions	Ensure new subdivisions connect to existing as well as future subdivisions through roads which accommodate all transport modes.	Developers	Guidance	Development	Connectivity Diversity & Character Change

5 Overall Actions

Actions / Opportunities for delivery	Description	Leader / Stakeholders	Timing / Implementation	Trigger	Outcomes
WDC projects & initiatives					
Slow Streets and traffic calming	Work to reduce the speed of vehicles on roads in Tikipunga and explore opportunities for traffic calming on certain streets. Focus on: a. Heretaunga Street b. Vinegar Hill Road c. Ngunguru Road d. Kiripaka Road.	Council	Ongoing	Slow Streets Programme Traffic calming business case within Corks Road Area Speed Limit Bylaw Review	Connectivity Diversity & Character
'Smart City' technologies	Investigate options for the use of new technology across Whangārei urban centres and moving to a 'Smart City' concept. Smart city initiatives could include: <ul style="list-style-type: none"> • Smart street lighting • Smart transport • Sensor traffic lights 	Council	Funded		Connectivity Diversity & Character Change
Public transport improvements	Work with NRC to support the continuous improvement , (reliability, frequency and coverage) of the existing Tikipunga / Kamo / City Centre bus network.	NRC	Planned	Funding and resourcing Development of supporting infrastructure and bus lanes	Connectivity Diversity & Character Change

Actions / Opportunities for delivery	Description	Leader / Stakeholders	Timing / Implementation	Trigger	Outcomes
	a. Investigate splitting of Tikipunga / Kamo / city centre route to create direct routes between Tikipunga and the city centre, as well as Kamo and the city centre. b. Investigate the establishment of a Kamo / Tikipunga loop bus service.			Ongoing network improvement and extension	
Dog control	In response to community concerns on dog behaviour and roaming dogs, review our Dog Management Policy Bylaw .	Council	Planned	Community drive	Diversity & Character
Park & Ride	Investigate opportunities for park and ride within Tikipunga, to service those who travel through Tikipunga from the Tutukaka Coast. Park and ride facilities should be: <ul style="list-style-type: none"> • In a location which is along the bus route to ensure easy access. • Be secure and safe for both pedestrians and vehicles. 	NRC Council	Strategic	Community Drive Supporting infrastructure Funding & Resourcing	Connectivity Diversity & Character Change
Community projects & initiatives					

Actions / Opportunities for delivery	Description	Leader / Stakeholders	Timing / Implementation	Trigger	Outcomes
Entranceways into Tikipunga	Support the community in the improvement of Tikipunga's entranceways/landmarks and arrivals through landscaping, signage and design	Community Council	Strategic	Community Drive Funding & resources	Connectivity Diversity & Character Change
Development Deliverables					
Reverse Sensitivity	As development occurs consider the proximity of residents to commercial activity, SH1, arterial roads, railways lines, industry and sports grounds. Ensure appropriate sound insulation is considered without compromising activity and amenity to residents and the public.	Developers	Guidance	Development Redevelopment	Connectivity Diversity & Character Change

2.2 Review of Draft Long Term Plan 2021 - 2031

Meeting: Council Briefing
Date of meeting: 15 June 2021
Reporting officer: Dominic Kula, (General Manager Planning and Development)

1 Purpose

For Council to review the draft Long Term Plan 2021 – 2031 Volumes 1 and 2 prior to formal adoption on 24th June 2021.

2 Background

The Local Government Act 2002 requires that Council adopt a new Long Term Plan every three years. Over the last year, Council has progressed the development of the new plan for the years 2021 – 2031.

This process began with the setting of the priorities, strategic drivers and vision for the LTP. The next stage of the process was information briefings on Council activities followed by direction setting on key issues, such as rates. Council then moved on to prioritising areas of new spend from asset management processes alongside those identified by councillors.

This process has four key decision-making steps, of which three have already been completed:

- 17 December 2020 was the adoption of the draft Consultation Document and Supporting Documents for Audit;
- 25 February 2021 Council adopted the Consultation Document and Concurrent Consultations
- 12 May 2021 Council Deliberations on submissions received

The final stage of the process will be to formally adopt the audited Long Term Plan 2021 – 2031 on 24 June 2021.

3 Discussion

The main caveat today is that both LTP Volumes are still undergoing the review by Audit NZ. We have been working with the Audit team since 31 May who have identified two key areas of focus:

- National Policy Statement – Urban Development
- Waka Kotahi NZ Transport Agency – impact of lost subsidy

Progress on these items has been good, with positive indications from Audit.

3.1 Outcomes of Deliberations

Following Deliberations on 12 May 2021 staff have worked through the outcomes of Council Deliberations and produced a draft Long Term Plan for Audit. The flowing changes have been made as a result of Deliberations:

- Contestable grant funding increase of \$100K p.a.
- Old Municipal Building repair and enhancement
- District wide bike security infrastructure \$1 million
- Carpark for new Ruakaka Recreation Centre \$1 million
- WAM air conditioning unit upgrade – estimated \$365K
- WAM operational funding \$250K (\$100K – Yr 1; \$100K Yr 2 and \$50K Yr 3)
- Additional \$50K for Raumanga playground development
- Cat de-sexing, microchipping and registering programme subsidy \$15K (Yrs 1-3)
- Gomez Park proposal grant funding \$30K (Yr 3)
- Seed funding for 800-1000 seat theatre at Forum North (Yrs 8-10)
- Oakura Wetland Project grant funding \$30K (Yr 1)
- Predator control for Parihaka Scenic Reserve \$50K p.a.
- Additional \$5.9 million for replacement of the Semenoff Stadium Roof
- Te Karearea budget increase of \$70K p.a. (inclusive of \$40K p.a. set aside for Hikurangi Repo)
- Contestable funding for community waste minimisation projects and community clean ups \$200K p.a.
- \$150K (Yr 1) to continue our existing housing related workstream, working alongside Government agencies such as Kāinga Ora to develop a housing strategy
- Waste minimisation budget (\$75K Yr 1, then \$200K p.a. Yrs 2-10)
- An additional \$2 million (increasing the total allocation to \$4 million capex Yrs 1-4) for Pensioner Housing.

The changes made through Deliberations resulted in a further 0.5% rates increase in year one of the LTP, bringing the total increase for the 2021 – 2022 financial year to 7%. The proposed rates increase for the remaining years of the LTP is 4.5%; this amount assumes that LGCI will remain at 2.5% over the corresponding years.

3.2 Constraints and risks

Council has been faced with a number of constraints and uncertainties in reviewing the LTP, the most prominent being opex where several factors that could impact on Council's Plans.

A key risk remains loss in Waka Kotahi subsidy. Waka Kotahi NZTA have already given us their indicative funding for opex on the 'Maintenance, Operations & Renewals and Public Transport Continuous Programmes'. Following discussions with councillors staff have assessed existing contract obligations and advised that they can be met within the revised budget of \$86.5m (an \$85m budget is required to maintain LOS and meet contract obligations).

Potential loss in capital subsidies are still unknown, and will remain so until August or September 2021. The loss in subsidy will mean we will have insufficient funds to subsidise the proposed transportation programme. Subsidy loss in this area will likely result in a Long Term Plan Amendment.

4 Attachments

- Long Term Plan 2021 - 2031 Volume One - under separate cover
- Long Term Plan 2021 – 2031 Volume Two - under separate cover
- Briefing Presentation will follow under a separate cover on Monday 14 June 2021