

Council Briefing Agenda

Date: 18 May, 2021

Time: 9:00 am

Location: Council Chamber
Forum North, Rust Avenue
Whangarei

Elected Members: Her Worship the Mayor Sheryl Mai
(Chairperson)

Cr Gavin Benney

Cr Vince Cocurullo

Cr Nicholas Connop

Cr Ken Couper

Cr Tricia Cutforth

Cr Shelley Deeming

Cr Jayne Golightly

Cr Phil Halse

Cr Greg Innes

Cr Greg Martin

Cr Anna Murphy

Cr Carol Peters

Cr Simon Reid

For any queries regarding this meeting please contact
the Whangarei District Council on (09) 430-4200.

1. Apologies

2. Reports

2.1. Kaipara Moana Remediation Programme

1

3. Closure of Meeting

2.1 Kaipara Moana Remediation Programme

Meeting:	Council Briefing
Date of meeting:	18 May 2021
Reporting officer:	Tony Horton (Manager – Strategy)

1 Purpose

To receive an update on the Kaipara Moana Remediation Programme from representatives of the Kaipara Moana Remediation Joint Committee.

2 Discussion

The Kaipara Moana Remediation Programme was established in response to prolonged and increasing environmental degradation of the Kaipara Moana. A Kaipara Moana Remediation Business Case was developed through the Kaipara Moana Working Party. This was a key document to securing central government funding for remediation initiatives.

To deliver the remediation outcomes, a MOU was signed between Northland Regional Council, Auckland Council, Kaipara Uri and central government. This established the programme and a pathway for a Joint Committee.

Whangarei District Council's position is to support the remediation programme, but not to contribute funding or be party to the Joint Committee. This is in recognition that the scope of the remediation falls under the responsibilities of regional authorities. Through the MOU it was recognised that the Kaipara District Council and Whangarei District Council should be briefed on remediation progress and have the ability to informally feedback through those briefings.

The briefing will involve a presentation from Tame Te Rangi, Chair of the Kaipara Moana Remediation Joint Committee as well a member of the Interim Management Team.

3 Attachments

Attachment 1: Presentation on the Kaipara Moana Remediation Programme.

Kaipara Moana Remediation Programme Progress Report

May 2021



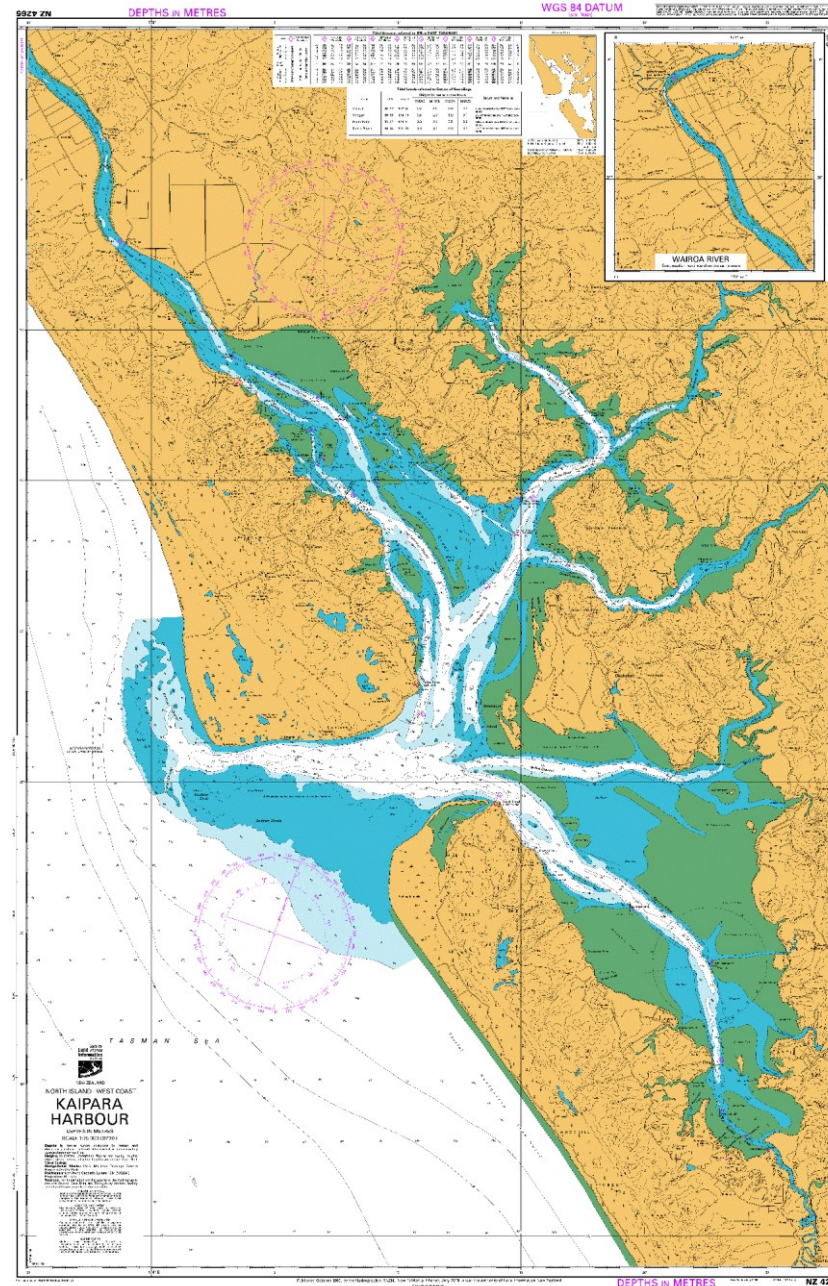
Kaipara Moana

Harbour

- 950 km² at high tide
- Deep channels
- Extensive flats and basins
- Diversity of habitats
- Shallow estuaries and arms
- Extensive shoreline

Catchment

- 6,000 km² catchment
- 3,710 km² in pasture
- 809 km² highly erodible land
- 8,110 km² waterways on pastoral land



Sediment is the principal problem

- Nearly 10x sediment deposition now than ~200 years ago
- Loss of seagrass, fish nurseries & shellfish
- Sediment is universal contaminant (nutrients, oxygen, pH)
- Annual average sedimentation rate (AASR) key measure – health goal of +2 mm/yr on past

Kaipara Harbour Sediment Mitigation Study (2017)



Figure 4: Photos of KAIF. (A) looking east across the Auckland Council ecological monitoring site KKF, near to the KAIF depositional basin, (B) characteristic rippled sediment topography with sparse *Zostera muelleri* (0.25 m² quadrat), and (C) characteristic rippled sediment topography. (Figure from Hailes and Carter 2016).

MOU vision

“...to protect, restore, and enhance the mauri of the Kaipara Moana through contributing to its environmental restoration and to recognise the fundamental significance of Kaipara Moana to the social, economic, and cultural well-being of the Kaipara Uri and all New Zealanders for present and future generations.”



09 October 2020: MOU signed

Deed of Funding

- Requirement of Crown funding
- Member Parties and MfE are signatories
- Required two things before sign off possible:
 - Rework of standard MfE deed format to reflect unique partnership
 - Year One Work Plan adopted by Joint Committee
- Year One Work Plan adopted 16 November by KMR Joint Committee
- Deed of Funding signed 8 February 2021
- Crown grant payment received 26 March 2021

Kaipara Moana MOU – key conditions of funding

- Crown contributes \$100 million towards first six years of project
- Crown commits up to \$12 million in first year
- Balance of Crown funding over 6 years (\$88 million) depends on:
 - AC and NRC committing to co-fund the Kaipara Moana Remediation Programme through their respective Long-Term Plans
 - confirmation the total contribution from AC, NRC and other contributions (i.e., landowner, industry association, philanthropic), will match the Crown's funding (being the Initial Funding and Balance Funding)

Contributions to make up funding

Contribution Source	(\$ million)
Crown	\$100
Landowners / others	\$80
Councils	\$20
Total	\$200

Year One Work Plan

Three key focus areas

Governance and management

- Establishing the joint committee, setting up the administration processes
- Considering options for the KMR Programme's operations vehicle

Setting up the foundations

- Ensuring the Programme's remediation actions had a sound basis
- Nursery Strategy, Engagement and Communication's Strategy, Workforce Strategy, Matāuranga Māori Strategy
- Digital tool design, science based research (e.g. Te Paiaka Native Root project)

Year One Work Plan continued...

Remediation quick wins

- Focused on projects already underway
 - Forest Bridge Trust (group working with landowners on the Hōteio River)
 - North Kaipara Grants (NRC environmental grants process refocussed onto Kaipara Catchment)
- Working with willing partners
 - Fonterra Tiaki Partnership
 - Waiotū Catchment Care Group

Year Two Work Plan

- Focus is on three workstreams
 - Remediation
 - Advocacy and Influence
 - Governance, Management and Planning
- Most \$ and resources into remediation workstream – ramping up of delivery in order to achieve expected outcomes
- Requires landowners to contribute: 50% of cost of remediation works done on properties
- Some limited \$ available for activity which doesn't generate a 50% contribution

Year Two Work Plan continued ...

- Remediation works through ‘Sediment Reduction Plans’:
 - Each Sediment Reduction Plan would ideally identify 3 years (or more) of remediation works for a landowner, forming a grants contract
 - Front-line engagement with individual landowner required by a KMR-approved remediation advisor, or through collective arrangements
 - Landowners need choice in how remediation works are delivered, responding to specific conditions on a farm and farm systems
 - Consistent funding criteria and standardised costings for landowners
 - Remediation works at a modest scale for each property, but done everywhere and in a coordinated manner, will achieve good results

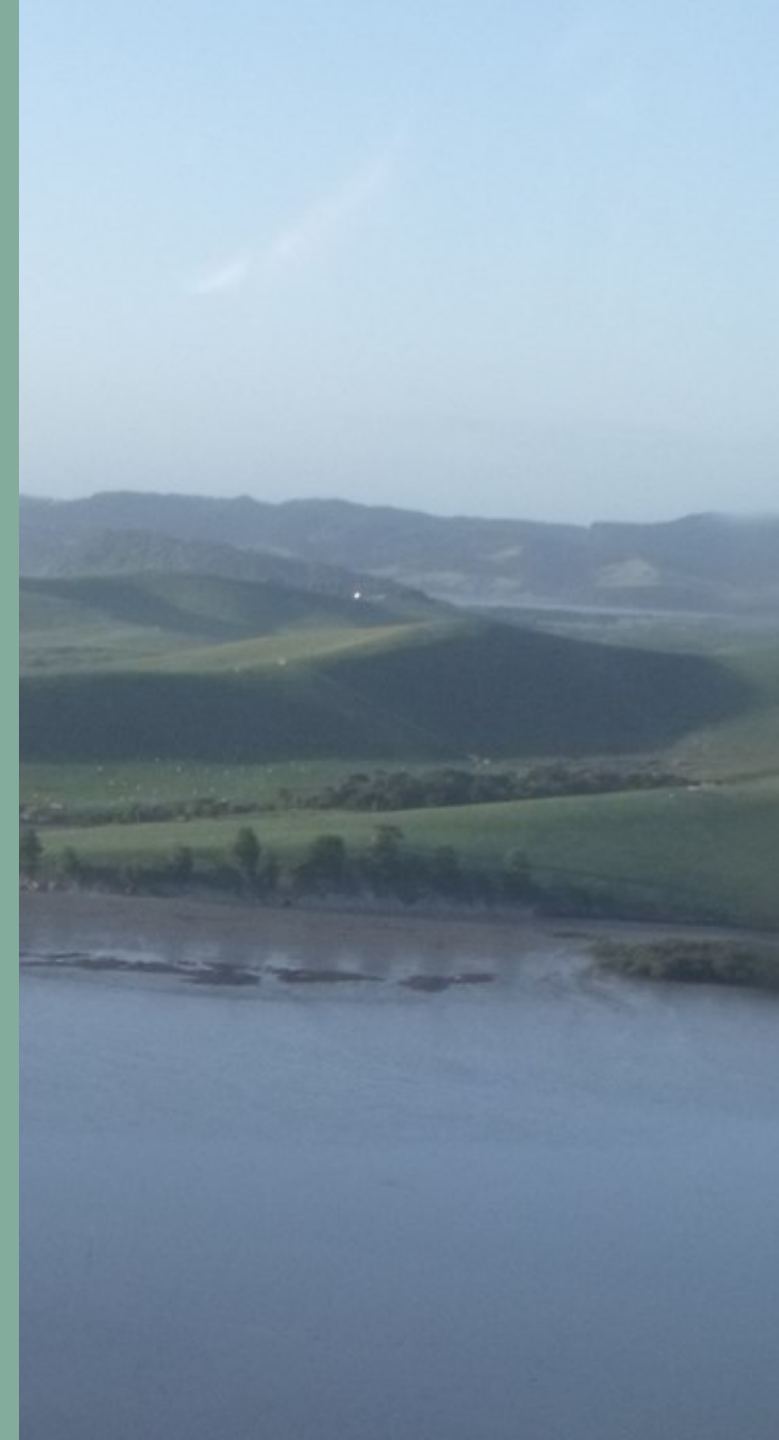
Proposed operations vehicle

Operational vehicle needs to be established:

- Day-to-day operations of the KMR Programme
- Deliver the annual work plan
- Manage finances in a transparent and robust manner
- Monitoring and reporting on programme activities
- Develop transferrable operations (for future statutory Kaipara Moana Body)

Principles of operational vehicle

- Clear line of sight between governance and operations
- Easy and quick to establish
- Cost effective
- Draws on existing council services
- Flexibility to employ / second staff from councils & Kaipara Uri
- Consistent with legislation, policy and Kaipara Uri preferences



Joint Committee's recommended option

A business unit within NRC

- Doesn't create another layer of governance
- Opportunity to share council support services that would be more cost efficient for the KMR Programme
- Can be run as a lean entity with opportunities for secondments from Member Parties & contracting
- Still possible to create a KMR Programme identity & culture within the business unit
- Relatively quick set up compared to other options
- NRC region covers over $\frac{3}{4}$ of the KM catchment & can provide the dedicated support the KMR programme requires
- An interim solution until such time as the statutory Kaipara Moana Body is in place

“Kaipara Maurikura”

- Proposal that a business unit would be called Kaipara Maurikura:
 - To reflect the unique partnership of the KMR programme
 - To give it a unique identity which sets it apart from the rest of NRC
- Proposed that the manager of Kaipara Maurikura is known as Pou Tātaki



Process and timeframes if Kaipara Maurikura option approved

Recruitment of Pou Tātaki as soon as possible

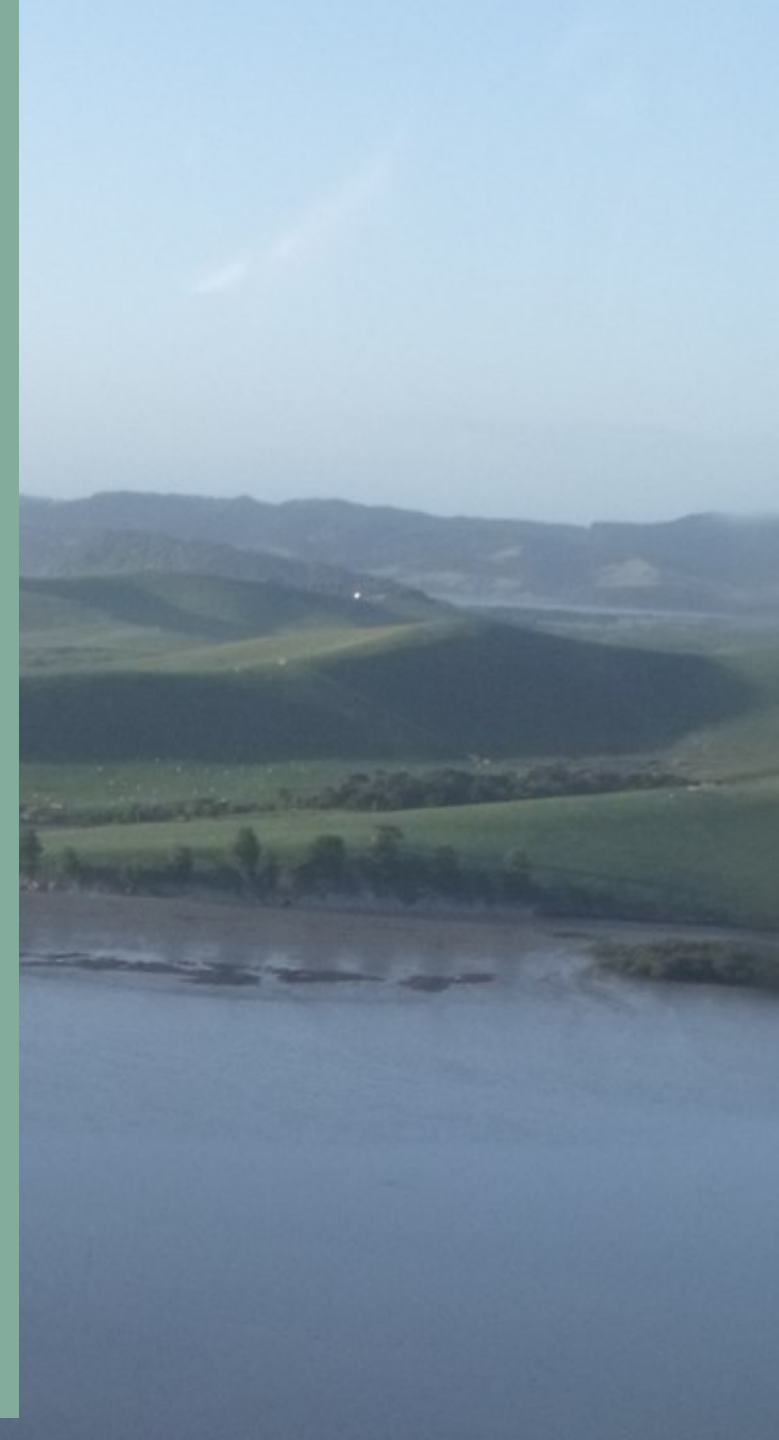
Recruitment of key staff for Kaipara Maurikura

Service Level Agreements with NRC for shared services
by July 2021

Establishment of operations unit by 01 July 2021

Keeping you informed/involved

- Quarterly Panui on projects progress
- Email updates in between
 - to your staff / councillors?
- Six monthly kanohi ki te kanohi briefing or more frequently?
- Encouraging community groups undertaking sedimentation / remediation projects to contact Programme



QUESTIONS ?

