

Infrastructure Committee Agenda

Date: Thursday, 11 March, 2021

Time: 9:00 am

Location: Council Chamber
Forum North, Rust Avenue
Whangarei

Elected Members: Cr Greg Martin (Chairperson)
Her Worship the Mayor Sheryl Mai
Cr Gavin Benney
Cr Vince Cocurullo
Cr Nicholas Connop
Cr Ken Couper
Cr Tricia Cutforth
Cr Shelley Deeming
Cr Jayne Golightly
Cr Phil Halse
Cr Greg Innes
Cr Anna Murphy
Cr Carol Peters
Cr Simon Reid

For any queries regarding this meeting please contact
the Whangarei District Council on (09) 430-4200.

1. Declarations of Interest	
2. Apologies	
3. Confirmation of Minutes of Previous Infrastructure Committee Meeting	
3.1. Minutes Infrastructure Committee 11 February 2021	3
4. Decision Reports	
4.1. Northland Regional Landfill Limited Partnership Statement of Intent 2021-2022	7
4.2. John Street Resolution to Make One-Way	19
4.3. Oakura Wetlands Community Project - Additional Funding	27
5. Information Reports	
5.1. Contracts Approved Under Delegated Authority - March 2021	33
5.2. Infrastructure Operational Report - March 2021	39
6. Public Excluded Business	
7. Closure of Meeting	

Recommendations contained in the agenda are not the decisions of the meeting.

Please refer to minutes for resolutions.

Infrastructure Committee – Terms of Reference

Membership

Chairperson Councillor Greg Martin

Members Her Worship the Mayor Sheryl Mai
 Councillors Gavin Benney, Vince Cocurullo, Nicholas Connop, Ken Couper, Tricia Cutforth, Shelley Deeming, Jayne Golightly, Phil Halse, Greg Innes, Anna Murphy, Carol Peters, Simon Reid

Meetings Monthly

Quorum 7

Purpose

To oversee the management of council's infrastructural assets, utility services and public facilities.

Key responsibilities

- Services including the provision, maintenance and capital investment for:
 - Infrastructure asset management, projects and support
 - Infrastructure project co ordination
 - Transportation
 - Waste and drainage
 - Solid waste, waste minimisation and recycling services
 - Water
 - Parks and reserves
 - Cemetery
 - Laboratory services
 - Flood alleviation schemes
- Reporting on service delivery, including operational financial performance.
- Reporting on capital projects.
- Operational reporting for the Infrastructure group within Council.

- Procurement – general procurement relating to the areas of business of this committee, within delegations.
- Shared Services – investigate opportunities for Shared Services for recommendation to council.
- Council Controlled Organisations (CCOs) – monitoring the financial and non-financial performance of CCOs whose functions would otherwise fall under the scope of this committee. Includes trading CCOs (CCTOs) and those CCOs exempted under the LGA. Responsibilities include:
 - advising on the content of annual Statement of Expectations to CCOs
 - agreement of the Statement of Intent
 - monitoring against the Statement of Intent
 - for exempted CCOs, monitoring and reporting as agreed between Council and the organisation

CCOs accountable to this committee:

- Northland Regional Landfill Limited Partnership (NRLLP) – CCTO
- Whangarei Waste Limited (WWL) – exempted CCO

Delegations

- (i) All powers necessary to perform the committee's responsibilities, including, but not limited to:
 - a) the approval of expenditure of less than \$20 million plus GST.
 - b) approval of a submission to an external body.
 - c) establishment of working parties or steering groups.
 - d) adoption of strategies and policies relating to the key responsibilities of this committee (except for those that cannot be delegated by Council under Clause 32(1)(f) of Schedule 7 of the LGA).
 - e) power to establish subcommittees and to delegate their powers to that subcommittee.
 - f) the power to adopt the Special Consultative Procedure provided for in Section 83 to 88 of the LGA in respect of matters under its jurisdiction (this allows for setting of fees and bylaw making processes up to but not including adoption).
 - g) the power to delegate any of its powers to any joint committee established for any relevant purpose under clause 32, Schedule 7 of the Local Government Act 2002.

Item 3.1
Infrastructure Committee Meeting Minutes

Date: Thursday, 11 February, 2021
Time: 9:00 a.m.
Location: Council Chamber
 Forum North, Rust Avenue
 Whangarei

In Attendance
 Cr Greg Martin (Chairperson)
 Her Worship the Mayor Sheryl Mai
 Cr Gavin Benney
 Cr Vince Cocurullo
 Cr Nicholas Connop
 Cr Ken Couper
 Cr Tricia Cutforth
 Cr Shelley Deeming
 Cr Phil Halse
 Cr Greg Innes
 Cr Anna Murphy
 Cr Carol Peters
 Cr Simon Reid

Not in Attendance
 Cr Jayne Golightly

Scribe
 C Brindle (Senior Democracy Adviser)

1. Declarations of Interest

There were no interests declared.

2. Apology

Cr Jayne Golightly

Moved By Cr Greg Innes

Seconded By Cr Phil Halse

That the apology be sustained.

Carried

3. Confirmation of Minutes of Previous Infrastructure Committee Meeting
3.1 Minutes Infrastructure Committee Meeting held 10 December 2020

Moved By Cr Vince Cocurullo

Seconded By Cr Anna Murphy

That the minutes of the Infrastructure Committee meeting held on Thursday 10 December 2020, having been circulated, be taken as read and now confirmed and adopted as a true and correct record of proceedings of that meeting.

Carried

4. Decision Reports

4.1 Oakura Wetland community project - additional funding

Moved By Cr Gavin Benney

Seconded By Cr Nicholas Connop

That the Oakura community are informed that they can make a submission to the 2021-31 Long Term Plan, or the Community Grant fund, for up to \$25,000 towards the Oakura wetland project resource consent.

Carried

Cr Peters joined the meeting at 9.02am during discussions on Item 4.1.

Cr Cutforth joined the meeting at 9.04am during discussions on Item 4.1.

5. Information Reports

5.1 Contracts Approved Under Delegated Authority

Moved By Her Worship the Mayor

Seconded By Cr Greg Innes

That the Infrastructure Committee note the Infrastructure contracts awarded under Chief Executive and General Manager delegated authority.

Carried

Cr Halse requested his vote against be recorded.

5.2 Infrastructure Operational Report

Moved By Cr Vince Cocurullo

Seconded By Cr Nicholas Connop

That the Infrastructure Committee notes the Infrastructure Operational Report update.

Carried

6. Public Excluded Business

There was no business conducted in public excluded.

7. Closure of Meeting

The meeting concluded at 10.20am.

Confirmed this 11th day of March 2021

Councillor Greg Martin (Chairperson)

4.1 Northland Regional Landfill Limited Partnership Statement of Intent 2021-2022

Meeting: Infrastructure Committee
Date of meeting: 11 March 2021
Reporting officer: David Lindsay (Solid Waste Engineer)

1 Purpose

To agree to the Northland Regional Landfill Limited Partnership (NRLLP) Statement of Intent in accordance with the Local Government Act 2002.

2 Recommendation

That the Infrastructure Committee agrees to the Northland Regional Landfill Limited Partnership Statement of Intent 2021-22.

3 Background

The Statement of Intent (SOI) has been reviewed for appropriateness in relation to the delivery of services, management and governance of NRLLP and obligations to meet Section 64, and Schedule 8 of the Local Government Act 2002 (LGA).

The Statement of Intent for NRLLP is included as Attachment One.

NRLLP's SOI includes 'high level' performance targets. More detailed and specific targets are set and monitored within the entity following through from its annual Business Plan. These are not included in this SOI as section 71 of the LGA permits information to be withheld that could be withheld under the Local Government Official Information and Meetings Act 1987 (LGOIMA). NRLLP specifically relies on section 7(2)(h),(i) and (j) of the LGOIMA.

Note: Alan Adcock, General Manager – Corporate, has a governance relationship with NRLLP as a Director on behalf of Whangarei District Council. Any potential conflicts of interest this causes are dealt with as circumstances dictate.

4 Significance and engagement

The decisions or matters of this agenda do not trigger the significance criteria outlined in Council's Significance and Engagement Policy, and the public will be informed via agenda publication on the website.

5 Attachment

1. Northland Regional Landfill Limited Partnership – Statement of Intent 2021-22

Northland Regional Landfill Limited Partnership Draft Statement of Intent and Business Plan 2021/22

A. Draft Statement of Intent

A.1 Introduction

Following a competitive process seeking requests for proposals, NRLLP was formed on 2 July 2009 and purchased the consented Puwera landfill site and Re-Sort resource recovery park from Whangarei District Council (WDC).

The Northland Regional Landfill Limited Partnership (NRLLP) comprises two limited partners; Whangarei District Council (WDC) and Northland Waste Limited (NWL).

The General Partner is Whangarei Waste Limited (WWL).

The operation is governed by a joint venture agreement under which neither party has absolute control of the organisation but is deemed a Council Controlled Trading Organisation (CCTO) by virtue of the Local Government Act (LGA).

A.2 Purpose of the Statement of Intent

This statement of intent is prepared in accordance with section 64 of the Local Government Act 2002 (LGA). It outlines the activities and intentions of NRLLP for the next three financial years, and the objectives to which those activities will contribute. It provides a basis for which the General Partner can be held accountable to the Limited Partners for the performance of the organisation.

A.3 Purpose of the Organisation

NRLLP is a for-profit entity operating as a best practice business financially, environmentally, socially and culturally.

The overarching purpose of NRLLP is to operate the Puwera landfill and ReSort RRP and to provide waste disposal facilities in the Whangarei District.

A.4 Nature and Scope of Activities

The activities that NRLLP provides currently includes the following:

- Own and operate Puwera Landfill
- Own, operate and manage ReSort RRP
- Haulage of conforming waste from ReSort to Puwera
- Provide for post closure responsibilities for Puwera
- Conduct waste diversion and recycling and green waste separation

A.4.1 Vision

To operate competitive waste disposal facilities to provide for the needs of Northland, and the North Auckland Region; undertaking waste diversion and recycling where economically viable; achieve Partner's financial return requirements; and pursuing business growth opportunities where appropriate.

A.4.2 Community Outcome Support

NRLLP will operate to meet reasonable community expectations, and as supported by the WDC vision, where this is acceptable to both Shareholders/Limited Partners and does not impact on primary objectives or existing agreements.

A.4.3 Additional Legislation

The partnership is constituted under the Limited Partnership Act 2008 and is governed by the limited partnership agreement dated 30 June 2009 which may be amended from time to time by agreement between the partners.

The management of the partnership is undertaken by WWL, a company registered under the Companies Act 1993.

A.5 Approach to Governance

A.5.1 Structure

NRLLP is a council-controlled trading organisation as defined by section 6 of the LGA and is a 50/50 partnership between the two limited partners WDC and NWL.

The operation is governed by a limited partnership agreement.

The general partner, WWL, is jointly owned by WDC (Group A shares) and NWL (Group B shares). The company is governed by four directors, two group A directors and two group B directors appointed by the respective shareholders. No remuneration is paid by the company to the directors, the shareholders will pay the directors appointed by them as they see fit. A quorum consists of one group A director and one group B director.

A.5.2 Associated Interests of Partners

The parties have additional interests that are associated with the partnership.

Whangarei District Council

WDC funds domestic rubbish collections and rural transfer station services in the Whangarei District. WDC will continue to provide these services into the future. All the waste tonnage is committed to the Puwera Landfill.

WDC have agreed to structure their tenders for domestic collections of refuse and recycling and rural transfer sites in a manner which ensures long term protections of the waste and recycling stream for the benefit of Puwera Landfill

WDC awarded the Whangarei District solid waste collection and recycling collection contracts to NWL, following a competitive tender process. The contracts run from 1 July 2018 for a 5+2+2 term.

WDC utilise the services of their Solid Waste Engineer to the Partnership and carries out various tasks to assist the development of the landfill and its operations.

Northland Waste Ltd

Northland Waste Ltd and associated companies have an obligation to deposit waste they collect in the Northland area into Puwera. There is also an obligation to deposit any North Auckland tonnes at Puwera provided; it is logistically possible; the Puwera Landfill charge plus transportation costs is equal to, or less than, charges and transportation to a competing landfill; and there are no commercial issues as a result of the NWL Auckland Council contract. NWL may also enter into tonnage swap agreements where this economically beneficial to them.

Quay Contracting Limited, a subsidiary of Northland Waste Ltd, carry out cell construction at the landfill for the Limited Partnership. Under a management agreement they also manage: ReSort operations; landfill operations; and provide administration and accounting services. Their services are provided at market rates.

Northland Waste Ltd and associates are active on their own account in all aspects of the waste collection stream prior to delivery to Puwera/ReSort.

A.5.3 Advisory Committee

The NRLLP Advisory committee function is to review any conflicts of interest, consult with WWL, and to be updated on the business affairs of NRLLP. The committee includes:

- Vince Cocurullo – appointed by WDC
- Shelley Deeming – appointed by WDC
- Warwick Syers – appointed by NWL
- Raymond Lambert – appointed by NWL

A.5.4 Board of Directors

The WWL board of directors meet monthly to govern the management of the partnership, the board includes:

- Gregory Martin – appointed by WDC
- Alan Adcock – appointed by WDC
- Warwick Syers – appointed by NWL
- Raymond Lambert – appointed by NWL

A.6 Goals/Objectives 2021/22

The long-term objectives of the partnership are set out in the partnership agreement and are included in Appendix 1 of this document.

Specific major focus for years ended 30 June 2022, 2023 and 2024:

- Operate and manage ReSort RRP and Puwera landfill in accordance with the management agreement and consents
- Diverting re-usable and recyclable material from ReSort general waste stream where financially viable
- Manage the financial aspects of the organisation to ensure a satisfactory annual distribution to the partners
- Continue development of the fifth cell construction stage at the landfill and ensure a minimum of six months capacity is always available
- Investigate options to future proof the landfill
- Pursue technologies to utilise the landfill gas flows and provide back up for the flare

A.7 Performance Targets and Measures

The following measures apply for each of years ended 30 June 2022, 2023 and 2024:

- To open both the Puwera Landfill and Re-Sort facilities for a minimum of 40 hours each week
- Achieve no notifiable health and safety incidents (as defined by Worksafe NZ) occurring at all operational sites owned by NRLLP
- Ensure Resort facilitates a minimum of 40% diversion away from landfill of all material being handled through the site
- Maintain compaction of 0.7 tonnes of placed refuse per cubic metre of airspace used
- Ensure 6 months landfill capacity is maintained at all times
- Achieve a minimum of 70% landfill gas destruction

A.8 Information to be Provided Throughout the Financial Year

Due to the commercial sensitivity of the business operations financial information is strictly confidential and only available to management of both WDC and NWL

A.8.1 Half-yearly Report

The half-yearly report will be provided to the management of the shareholders/limited partners within 2 months of the first half of the financial year ending (28 February 2022). It will include:

- A comparison of performance against the performance targets and measures set out in the statement of intent.
- Un-audited financial statements including a statement of financial position, statement of financial performance and statement of movements in equity.

A.8.2 Annual Report

The annual report will be provided to the management of the shareholders/limited partners within 3 months of the financial year ending 30 September 2022. The annual report will include all the information necessary to enable an informed assessment of operations, including:

- Audited financial statements for the financial year including; a statement of financial position, a statement of comprehensive income, a statement of changes in equity, a statement of cash flows and notes to the financial statements.
- A comparison of the performance targets and measures outlined in this statement of intent, and the actual performance of NRLLP for the financial year.
- Any material variances from the expected performance of NRLLP, and explanations for those variances.
- An independent auditor's report on the financial statements and the performance targets and other measures by which NRLLP's performance against its objectives may be judged.
- Other statements as may be necessary to fairly reflect the financial position of the Company, the resources available, and the financial results of the operations.

A.8.3 Annual Financial Estimates

Annual financial estimates (budgets) for operational activities and capital expenditure to be provided to the management of the shareholders/limited partners.

A.8.4 Annual Draft SOI

The Annual Draft SOI (Statement of Intent) shall be sent to the WDC and to NWL no later than 28 February each year.

A.8.5 No Surprises Approach

To ensure there is timely notification of any major issues, NRLLP commits to a no surprises approach beyond the formal reporting requirements. This means that WWL will immediately communicate, by email, any issues that may trigger public interest, have political implications, or gain significant media attention to the Advisory Committee and to both shareholders/limited partners.

A.9 Compensation Sought or Obtained

It is expected there will be no activities for which the board will seek compensation.

A.10 Procedures in Relation to Acquiring Shares

Partners will not acquire shares in any other similar organisation within the operating area without the prior written agreement of both joint venture partners. It is acknowledged that NWL and associated companies operate waste collection and disposal services throughout New Zealand.

A.11 Ratio of Consolidated Partners Funds to Total Assets

Partners' funds mean partners' capital accounts, partners current accounts and reserves. Total assets mean the book value of all assets of the partnership. The ratio of partners funds to total assets at 30 June 2020 was 55.7% (2019: 53.7%).

A.12 Accumulated Profits and Capital Reserves

All profits are allocated to partners current accounts effective balance date and distributions to partners are deducted from partners current accounts. Unrealised capital gains are held in revaluation reserve and classified as equity. The proportion of undistributed accumulated profits (retained earnings) and capital reserves that were distributed to partners at 30 June 2020 was 23.5% (2019: 24.5%). Distributions are determined from residual free cash flows available after meeting capex costs like cell construction costs and maintaining borrowings as agreed by Directors policies.

A.13 Estimate of the Commercial Value of the Partners Investment

It is not proposed to seek an independent assessment of the commercial value of the entity.

A.14 Forecast Financial Statements

Under the LGA council-controlled organisations that are not trading organisations are required to include forecast financial statements.

NRLLP is a trading organisation, and prospective financial statements are not included due to the commercial sensitivity of the business.

B. Business Plan 2021/22

B.1 Activities, Vision and Goals/Objectives

These are outlined in items 4 and 6 above

B.2 Governance/Management

The NRL Limited Partnership Agreement, Whangarei Waste Ltd Constitution and the WWL / NRLLP Shareholders/Limited Partners Agreement establish the constitutional rules of the entities.

Whangarei Waste Ltd is the general partner of the NRLLP. The WWL Board of Directors are the governance body of NRLLP.

The NRLLP Advisory Committee is to be consulted by the General Partner from time to time, to review any conflicts of interest and to be updated on the Limited Partnership's affairs.

Quay Contracting Ltd is the operations manager of Puwera Landfill and ReSort acting on their own account and responsible for all day to day operations, staffing and supply of plant and vehicles. They are remunerated in accordance with a management agreement. Quay Contracting also provide administration and accounting services

B.3 Budget 2021/22

The Budget is a component of this Business Plan and will be approved by the General Partner prior to 31 July but is not available with the Business Plan because of commercial sensitivity.

B.4 NRLLP Philosophy

- Operate a best practice business environmentally, financially, socially and culturally.
- Respect the individual requirements of the Partners as far as practical (e.g. Political Influence from Council and competitive market pressure for NWL)

B.5 Governance Review

Directors address governance issues with a Governance Plan and Legislative Compliance Checklist which are revisited biannually and are recorded in minutes. A Governance Health and Safety Checklist is completed annually.

Appendix 1: Long Term Objectives for the Limited Partnership

Appendix 2: Statement of Accounting Policies

Appendix 1

Extract from WWL NRLLP Shareholders/Limited Partnership Agreement dated 30 June 2009

Long Term Objectives for the Limited Partnership

The objectives of the Limited Partnership are to:

- (a) Develop and operate the Puwera Landfill so that it is capable of serving the Waste disposal needs of the Shareholders and the Partners to the Limited Partnership and the Northland Region and providing competitive Waste disposal services to third party Waste operators and other local authorities within the Operating Area in an environmentally sound and economically efficient manner and in accordance with all relevant resource consents.
- (b) Operate as a successful business including achieving sufficient earnings to support the continued operations of the Limited Partnership and to achieve an appropriate risk adjusted return on investment.
- (c) Manage the Waste stream so enough Waste is secured to ensure that the Landfill is operated to its commercial advantage taking into account the benefits of maximising the life of the Landfill and financial return to the Shareholders and the Partners to the Limited Partnership.
- (d) Ensure construction and operation of the Landfill is undertaken in such a manner as to maximise the life of the Landfill, both for Stage One of the Landfill as contemplated by the existing resource consents and for any future stages.
- (e) Operate the ReSort:RRP as a transfer station to serve the needs of the Whangarei District in an environmentally sound and economically efficient manner and in so doing ensure that current levels of service, including services such as Hazardous Wastes collection and vegetation separation, are maintained with operations to be undertaken using the best practicable option.
- (f) Promote Waste Minimisation where it is financially viable to do so.
- (g) Be responsive to the market demand for its services in terms of the criteria of quantity, quality and price.
- (h) Develop business plans consistent with WDC's Waste Management and Minimisation Plan and all relevant statutory and regulatory obligations.
- (i) Behave in an environmentally sustainable manner by promoting and maintaining the standards of environmental protection applied by the RMA and to minimise the impact of its activities on the environment.
- (j) Comply with relevant provisions of the LGA applying to a CCTO.

- (k) Promote and maintain standards of health and safety in accordance with all applicable statutes and regulations, and including best practice.
- (l) Act as a good employer and effectively manage staff.
- (m) Commit to consult with and be sensitive to the concerns of the Landfill and ReSort:RRP host communities.
- (n) Act as a good corporate citizen with regard to its business dealings and relations with key stakeholders and tangata whenua and the Northland community.
- (o) Be customer focussed and ensure good customer relationships and service provision.
- (p) Enter into and manage procurement contracts to deliver the Limited Partnership's services.
- (q) Maximise long run economic and environmental benefits to key stakeholders.

Appendix 2: Statement of Accounting Policies

Reporting Entity

Northland Regional Landfill Limited Liability Partnership (the Partnership) is a joint venture between Whangarei District Council and Northland Waste Limited as limited partners and Whangarei Waste Limited as a general partner.

The Partnership is domiciled in New Zealand and is a council-controlled trading organisation as defined under section 6 of the Local Government Act 2002, by virtue of Council's right to appoint 50% of the directors to the Board and the corresponding voting rights controlled by Council.

The primary objective of the Partnership is to provide waste facilities in the Whangarei District.

The entity's owners and others have no power to amend the financial statements after issue.

Basis of preparation

Statement of compliance

The financial statements of the Partnership have been prepared in accordance with the requirements of the Local Government Act 2002, which includes the requirement to comply with generally accepted practice in New Zealand (NZ GAAP). The partnership is a Tier 2 RDR (Reduced Disclosure Regime) reporting entity by virtue of not being publicly accountable and has expenses of less than \$30 million.

The financial statements comply with NZ IFRS (International Financial Reporting Standards) RDR and other applicable Financial Reporting Standards, as appropriate for profit oriented entities.

Measurement base

The financial statements have been prepared on a historical cost basis.

Functional and presentation currency

The financial statements are presented in New Zealand dollars and all values are rounded to the nearest thousand dollars. The functional currency of the Partnership is New Zealand dollars (NZ\$).

Changes in accounting policies

There have been no changes in accounting policies during the year.

Goods and services tax

All items in the financial statements are presented exclusive of goods and service tax (GST), except for receivables and payables, which are presented on a GST-inclusive basis. Where GST is not recoverable as input tax, it is recognised as part of the related asset or expense. The net amount of GST recoverable from, or payable to, the IRD is included as part of receivables or payables in the statement of financial position.

The net GST paid or, or received from the IRD, including the GST relating to investing and financing activities, is classified as a net operating cash flow in the statement of cash flows. Any commitments and contingencies are disclosed exclusive of GST.

Income tax

The Partnership incurs no taxation expense of tax liability. Taxation Surplus or Loss is borne by each partner according to profit share arrangements.

Any withholding tax or imputation credits arising from investment income are taken to the respective partners Current Accounts.

Equity

Equity is measured as capital contributions of the Partners; the Current Accounts of the Partners to the extent that they have not been authorised for distribution in the next financial

year; and Revaluation Reserves.

Segment reporting

The Partnership operates in one business segment, waste disposal, and in one geographical segment, Northland.

Critical accounting estimates and assumptions

In preparing these financial statements, the Partnership has made estimates and assumptions concerning the future.

These estimates and assumptions may differ from the subsequent actual results. Estimates and assumptions are continually evaluated and are based on historical experience and other factors, including expectations of future events that are believed to be reasonable under the circumstances. The estimates and assumptions that have a significant risk of causing a material adjustment to the carrying amounts of assets and liabilities within the next financial year are:

- Aftercare provisioning
- Cell construction

4.2 Parking and Traffic Bylaw Resolution: John Street One-way

Meeting: Infrastructure Committee Meeting
Date of meeting: 11 March 2021
Reporting officer: Pete Watts (NTA - Intermediate Capital Works Project Manager)

1 Purpose

To request the Committee, designate the Northern section of John Street as a one-way street with only south bound traffic.

2 Recommendation

That the Infrastructure Committee, pursuant to the Whangarei District Council parking and traffic Bylaw 2017 Clause 7, approves that John Street between Dent Street and Robert Streets is specified as a road where vehicles may only travel in the south bound direction and cycles may travel in both directions.

3 Background

The Whangarei City Centre is currently facing a number of challenges due to poor connectivity. The Whangarei District Council is aiming to make the City Centre a vibrant, attractive and fun centre for our District. The first step was taken in 2017 when the Whangarei City Centre Plan was adopted. This plan was developed with assistance from the Whangarei Business Sector and identifies the changes, key outcomes and transformational moves required to bring our City Centre to life.

Linked to the City Centre Plan is the City Core Precinct Plan, approved in 2019, that focuses on Whangarei's inner city. This plan sets out the short, medium and long term actions proposed for the city core. The focus of this plan is on capitalising on the current developments already planned or in progress.

One of the short-term actions was to create a Complete Streets Master Plan, a key document in enhancing the amenity of the streets. This document has been completed and was approved by Council in a meeting of The Strategy, Planning and Development Committee on the 20th of August 2020.

One of the 'key moves' outlined in the plan is to connect the city core and the Hatea waterfront and one of the ways of achieving that is to provide a generous crossing point across Dent Street connecting into the new waterfront park.

The plan's vision also includes making the northern half of John Street the main pedestrian link between the city core and the Hatea waterfront. To achieve this vision, the northern half of John Street would be made one-way, allowing space for beautification and a large pedestrian space (See Attachment 1 and 2).

4 Discussion

The upgrade of the Dent Street crossing is one of the highest priority projects identified by the plan as the creation of the Hundertwasser and new waterfront park is expected to significantly increase the volume of pedestrians using that crossing point.

The crossing is being designed to align with the entrance to the new waterfront park, directing people directly down John Street and into the city core. The crossing alignment and width has been based on the Complete Streets Master Plan's ultimate vision for John Street to prevent any re-work being needed when John Street is developed.

To achieve this alignment, the northern section of John Street from Robert Street to Walton Street) needs to be made one-way as the crossing will direct pedestrians into what is currently the northbound lane.

Construction of the Dent St pedestrian crossing is due to commence immediately, together with other upgrades on Dent St at the Riverside Dr intersection and installation of new kerb and footpath outside the Hundertwasser building. These works need to commence immediately to be completed prior to the Hundertwasser opening in December 2021.

Once construction of the Dent Street pedestrian Crossing commences, the northern end of John St will be closed to 2-way traffic and the one-way system as requested in this agenda needs to be installed to manage traffic on the street.

4.1 Policy and planning implications

The Complete Streets Master Plan identified John Street as a key pedestrian link and recommended making the street more pedestrian friendly by removing the north-bound traffic and making the north bound land pedestrian only. This can only be achieved by designating the northern section of John Street as one-way. Without this designation, portions of the Complete Streets Master Plan cannot be implemented.

4.2 Options

The options available are;

1. Leave John Street with two-way traffic. This would require the pedestrian crossing to be significantly narrower than the waterfront park footpath and the additional pedestrian facilities along John Street will not be able to be constructed. This narrowing would result in a significant bottle neck for pedestrians at the exit of the new waterfront park and extend the crossing times as less people could cross at the same time. This is not the preferred option and is not in line with the approved Complete Streets Centre Masterplan.
2. Designate the northern section of John Street as a one-way street with only south-bound traffic permitted. The crossing can then be upgraded to a wider, one-stage crossing that can accommodate the anticipated future pedestrian volumes. This is the preferred option and is consistent with the City Core Precinct Plan and Complete Streets Master Plan.

5 Significance and engagement

The decisions or matters of this agenda do not trigger the significance criteria outlined in Council's Significance and Engagement Policy, and the public will be informed via agenda publication on the website.

5.1 Engagement

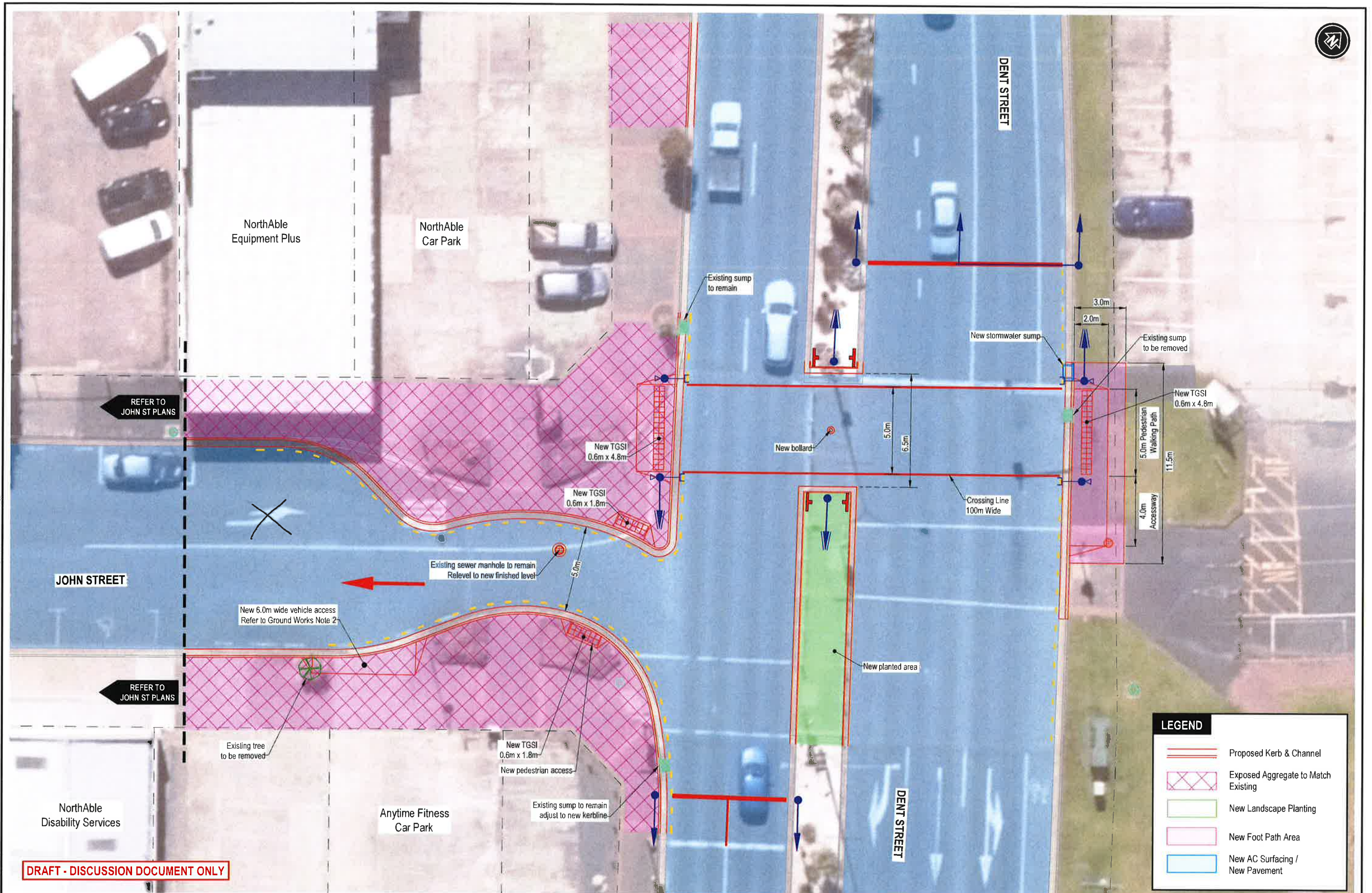
Letter drops have been undertaken including a door knocking exercise to meet and greet business owners to discuss the proposed works.

Engagement has also been undertaken with landowners all leading to demonstrable support for the project.

6 Attachments

Attachment 1: John Street Crossing Drawings

Attachment 2: Complete Streets Master Plan – John St



DRAFT - DISCUSSION DOCUMENT ONLY

DRAWN:	A.D.	DATE:	14/12/20	REV.		DRAWING STATUS - DRAFT	BOUNDARY ACCURACY - MED
CHECKED:	D.S.		14/12/20				
APPROVED:							

**NORTHLAND
TRANSPORTATION
ALLIANCE**

NCC
consulting engineers

PROJECT:	Northland Transportation Alliance Dent Street / John Street Intersection Improvements		JOB NO.	1672
TITLE:	DENT ST - CONCEPT / DISCUSSION PLAN		CLIENT REF.	-
SCALE:	1 : 200	ORIGINAL PAPER SIZE: A3 (297.00 X 420MM)	SHEET NO.	1/1
			RO	

5.7 John Street. High Amenity one way street.

Existing.

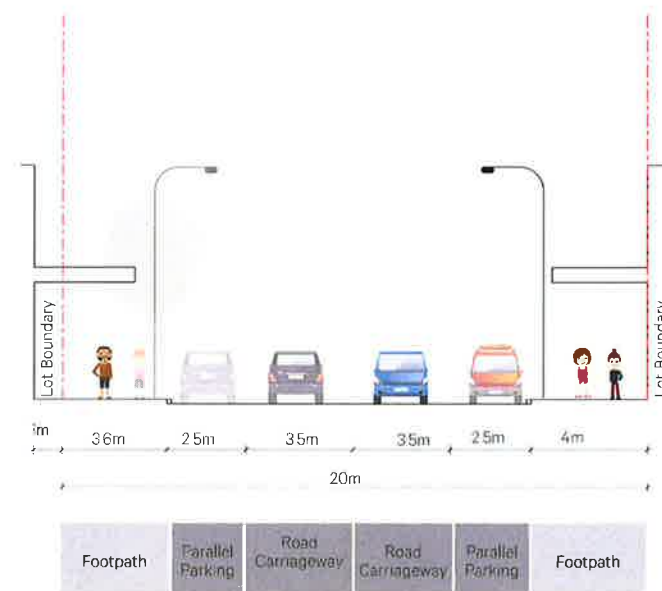
John Street is the eastern of a sequence of three streets that extend from Cameron Street to Dent Street and the waterfront. Vehicle entry to the inner city car parking building is from John Street. John Street suffers from the long blank and inactive building elevations of the car parking building and back-of-house of the cinema complex.

A retail unit has been installed to part of the base of the car park building housing two-dollar shop type retailer, similar types of retail occupy the east side of the street. Further north demolition of the mixed use type buildings and temporary replacement with at-grade car parking is serving to further disconnect the city core and waterfront.

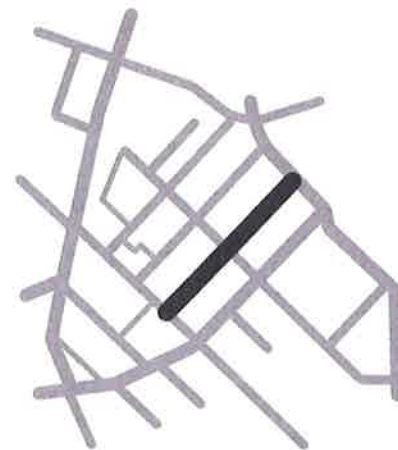
John Street is generally a traditional street layout with footpaths, kerb and channel and parallel parking to either side. Light poles alternate along the kerb edges of the street. A small number of street trees (Gleditsia and Titoki) are located in buildouts to the southern end, with no street trees and a mix of parallel and angle parking north of Robert Street. Paving is a mix of red and yellow clay brick, asphalt and concrete paving, concrete kerb and channel, and a small number of planted basalt build-outs to the south. Two-way traffic extends the length of the street, with left turn out only onto Dent Street.

Typical Existing Street Cross Section.

Section | 1:250@A3



Key Plan.



Opportunities.

- Create a pedestrian priority street accommodating one-way vehicle traffic and reduced car parking, to significantly increase the amenity of the street and draw stronger connections to the waterfront area.
- Redevelopment of adjacent sites to mixed-use including retail and entertainment at ground floor, commercial and residential above. Bringing a resident population and life to the city centre.
- John, James and Robert streets would benefit from the comprehensive redevelopment of the car park building, or at a minimum the ground floor redevelopment to include active retail function.
- Raised table crossing over Robert Street, to prioritise pedestrian movement to and from the waterfront.
- Improved stormwater quality, utilising raingardens to the length of the street.

Proposed.

A high amenity one-way slow-street connecting city core and waterfront.

Generous footpath widths flush with the vehicle lane, are activated by building use spilling out onto the street. Raingardens with a rich variety of native tree and shrub species provide for stormwater treatment and a 'water' based connection to the river environment.

John Street is reduced to one-way vehicle movement, with parallel car parking. Street lights to one side assist in defining the vehicle lane. A high quality materials palette of flush stone kerb, aco type channel, stone unit and insitu concrete paving to footpaths and carriageway. Bespoke seating is complemented by a standard suite of street furniture items.

The street is structured to create clear movement, planting, dining and activity zones, with stone tactile bands implemented to enable transition to 'shared space' in the future - requiring change in designation, removal of car parking and further limiting vehicle speeds.

Key Design Principles.



Proposed 3D view.

4.3 Oakura Wetland Community Project – Review of the funding request for consent costs

Meeting: Infrastructure Committee
Date of meeting: 11 March 2021
Reporting officer: Sue Hodge (Manager Parks & Recreation)

1 Purpose

To reconsider the request to approve additional funds to cover the consenting costs for the Oakura wetland community project.

2 Recommendation

That the Infrastructure Committee:

1. Notes the following recommendation adopted by the Infrastructure Committee on 11 February 2021:
“That the Committee approves staff to inform the Oakura community that they can make a submission to the 2021-31 Long Term Plan, or the Community Grant fund, for up to \$25,000 towards the Oakura wetland project resource consent.”
2. Approves up to \$25,000 in advance of the 2021-31 Long Term Plan towards assisting the Oakura community with the consenting costs for the Oakura wetland community project.
3. Notes that the Oakura Community will be making a submission to the 2021-31 Long Term Plan or the Community Grant fund for those funds.
4. Notes that should the Oakura Community application for funding through the 2021-31 Long Term Plan or the Community Grant fund not be approved, there will be a budget overspend of up to \$25,000.

3 Background

Funding towards the consenting requirements for a wetland project at Oakura was considered by the Infrastructure Committee on 11 February. The agenda report 11 February is attached.

Councillor Greg Martin (Chairperson) has requested staff represent this matter for the Committee’s consideration with a view to providing up to \$25,000 in addition to the \$20,000 already provided for the Oakura wetland community project, and in the event the Oakura Communities application for grant funding is declined, note there will be a budget overspend.

4 Significance and engagement

The decisions or matters of this Agenda do not trigger the significance criteria outlined in Council's Significance and Engagement Policy, and the public will be informed via Agenda publication on the website.

5 Attachment

Item 4.1 Oakura Wetland community project – additional funding

4.1 Oakura Wetland community project – additional funding

Meeting: Infrastructure Committee
Date of meeting: 11 February 2021
Reporting officer: Sue Hodge (Manager Parks & Recreation)

1 Purpose

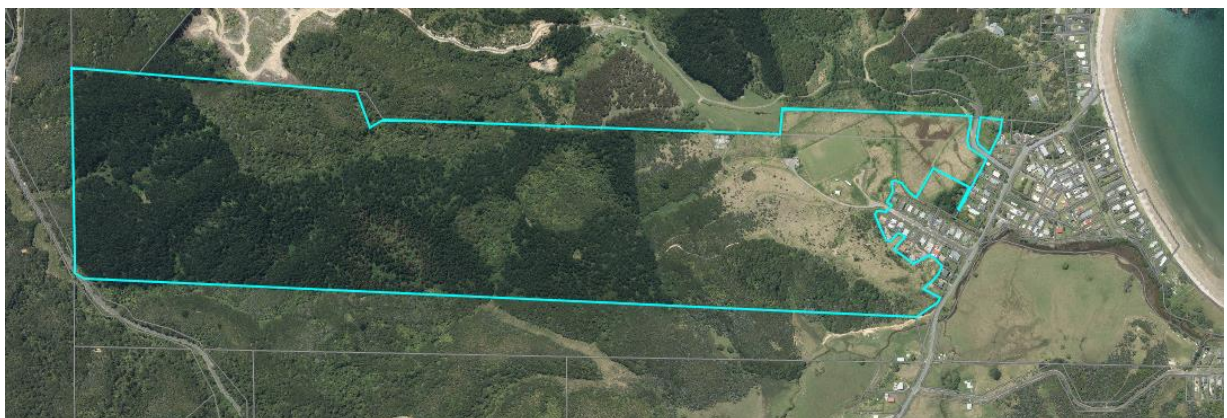
To seek additional funds to cover the consenting costs for the Oakura wetland community project.

2 Recommendation

That the Oakura community are informed that they can make a submission to the 2021-31 Long Term Plan, or the Community Grant fund, for up to \$25,000 towards the Oakura wetland project resource consent.

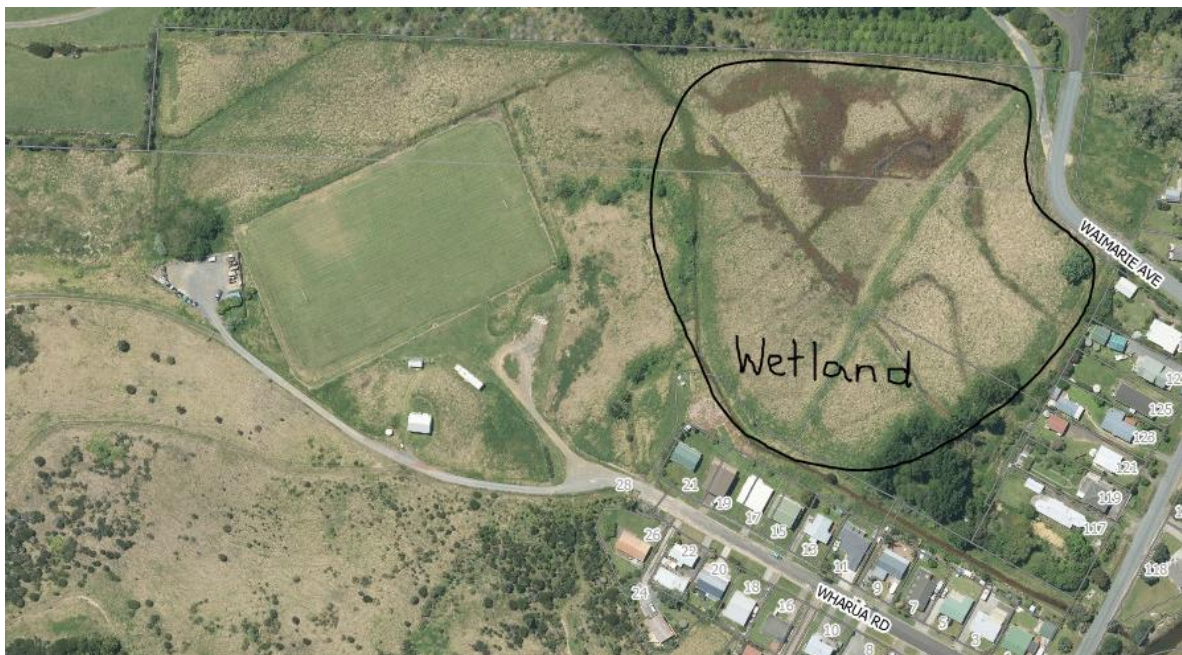
3 Background

Council owns a large property at Oakura that is partly a commercial forestry block and partly used for a variety of community uses including a wastewater plant, transfer station, sports fields and the recently built sports facility.



Council owned property

As part of the 2019-20 Annual Plan Council approved \$20,000 to assist the Oakura community with consenting requirements for a wetland project on this property. The budget was the best guess based on information at the time and not based on a quote from a planning consultant. The group thought they would just be undertaking some minor earthworks to create some small ponds and undertake mass planting.



Proposed wetland area

Unfortunately, there have been several changes in planning legislation since the project was first thought of, including changes to the proposed Regional Plan for Northland and National Policy Statement for fresh water management (2020) and Resource Management (National Environmental Standards for Freshwater) Regulations 2020 (Freshwater NES) which seeks to protect inland and coastal wetlands.

Council's stormwater team suggested the proposed wetland design and consenting could cost up to \$80,000 based on recent projects.

A smaller environment engineering company (Morphum Environmental Ltd), that undertakes stormwater management work in the region, has provided an Offer of Service to undertake the work. They believe they could provide a constructed wetland design and completed resource consent application that can achieve the goals of the community and meet the conditions of the initial planning assessment for \$37,310.

This offer of service does not include a cultural impact assessment, NRC resource consent lodgment fees or monitoring fees.

4 Discussion

The community have wanted to undertake this wetland project for many years. Undertaking work in a wetland area is no longer simple and consenting and consultation is a key part of the process.

Council has approved \$20,000 towards the consent. The final consent will cost closer to \$45,000 once all technical reports are commissioned and resource consent fees and monitoring fees paid.

If the community can get a consented design, there are a number of central government funding sources available to complete the physical works such as the Fresh Water Improvement fund and Jobs for Nature fund.

4.1 Financial/budget considerations

Council has approved \$20,000 plus GST towards this project as part of the 2019-20 Annual Plan deliberations. There is a shortfall of around \$25,000 and there is no alternative Infrastructure Department budget available. It is recommended that the community make a submission through the Long-Term Plan process or an application to the community grant scheme.

4.2 Policy and planning implications

To be granted consent it needs to demonstrate it complies with Regional Plan and Freshwater NES rules. This requires a number of technical reports to be delivered including an ecological assessment, cultural impact assessment, landscape report and engineering reports to cover the impacts of flooding effects, water diversion impacts, earthwork volumes and erosion and sediment control.

4.3 Options

Two options have been assessed:

Option 1- Do not approve a budget overspend. This option means the community group will need to find the shortfall in funding to ensure the project can progress. It is recommended that they either make a submission through the Long-Term Plan process or make an application to the community grant scheme.

Option 2 - Approve a budget over spend. This option means the project can get designed and consented and the community can seek further funding from a variety of grant sources to implement the project. Many grant funders require a project to have all required consents in place before approving funds.

There is no Council operational budget available for this project and due to budget reductions undertaken earlier in the year in response the impact of COVID-19 the preferred option is Option 1.

4.4 Risks

Because this is a community led project there is a risk that the community do not have the skills to manage the resource consent process leading to a project commencing on Council land without proper authorities. It is proposed this risk is mitigated by Council providing clear information about what the consenting requirements are.

5 Significance and engagement

The decisions or matters of this Agenda do not trigger the significance criteria outlined in Council's Significance and Engagement Policy, and the public will be informed via Agenda publication on the website.

5.1 Contracts Approved Under Delegated Authority

Meeting: Infrastructure Committee
Date of meeting: 11 March 2021
Reporting officer: Simon Weston (General Manager Infrastructure)

1 Purpose

For the Infrastructure Committee to note Infrastructure contracts awarded under Chief Executive and General Manager delegated authority

2 Recommendation

That the Infrastructure Committee note the Infrastructure contracts awarded under Chief Executive and General Manager delegated authority.

3 Background

Table 1 (below) records Infrastructure contracts awarded under Chief Executive and General Manager delegated authority. Attachment 1 provides a summary of the award process for each contract and a brief description of the works being undertaken

Table 1: Infrastructure Contracts Awarded Under Delegated Authority

1. Roothing	
CON19054	Contract Variation: Scour Protection Works 2019/20
2. Waste and Drainage	
CON15033	Contract Variation: Operation & Maintenance of Public Toilets
3. Parks and Recreation	
CON19040	Contract Variation: Ruakaka Sand Dune Removal

4 Significance and engagement

The decisions or matters of this Agenda do not trigger the significance criteria outlined in Council's Significance and Engagement Policy, and the public will be informed via Agenda publication on the website.

5 Attachment

1. Summary of Contracts Approved Under Delegated Authority March 2021

Summary of Contracts Approved Under Delegated Authority

This attachment provides a summary of the award process and works being undertaken for Infrastructure contracts awarded under Chief Executive and General Manager delegated authority.

1. Roding

CON19054

Contract Variation: Scour Protection Works 2019/20

Purpose

Approval is sought to increase the original contract price to \$289,536.52 excluding GST.

Background

This contract is for the construction of various types of scour protection works on various structures in the Whangarei district. It was awarded to Donovan Enterprises Ltd T/A Hutton & Cameron. The original contract amount was \$211,672.00 excluding GST.

This was exceeded due to:

1. Covid-19 variation cost claimed by the Contractor which has been assessed and agreed by the Engineer.

Financial

A breakdown of the additional costs is provided in the following table:

Item	Variation	Amount (excl. GST)
1.	Covid-19 variation cost	\$77,864.52

A breakdown of cost for the whole contract is provided in the following table:

Description	Amount (excl. GST)
Total original contract value	\$211,672.00
Total amount of variations	\$77,864.52
Total revised contract value	\$289,536.52

Chief Executive Approval

It is recommended that the total contract amount of CON19054 for Scour Protection Works – 2019/20 is increased by \$77,864.52 from \$211,672.00 to \$289,536.52 (Two hundred and eighty nine thousand, five hundred and thirty six dollars and fifty two cents) excluding GST.

2. Waste and Drainage

CON15033

Contract Variation: Operation & Maintenance of Public Toilets

Introduction

The Operations & Maintenance of Public Toilets contract with PPCS commenced on 1st September 2015; the contract runs until 31st August 2021.

The total approved value for the contract is \$1,303,720.00 excluding GST.

Due to increases in the scope of work over the period of the contract (more toilets have been built and others added to the contract as well as portaloos; cleaning frequencies have increased in some facilities and the impact of COVID-19 on cleaning standards) and above inflation increases in the minimum wage there is a need to increase the approved contract value by \$195,000.00 to cover the period until 31st August 2021.

In terms of new toilets, operational budget increases have been provided for, but they are not automatically included in our maintenance contract.

Chief Executive Approval

The value of Contract 15033 for Operations & Maintenance of Public Toilets be increased by \$195,000.00 from \$1,303,720.00 to \$1,498,720.00 (One million, four hundred and ninety eight thousand, seven hundred and twenty dollars and zero cents) excluding GST to cover the cost of the contract until August 2021.

3. Parks and Recreation

CON19040

Contract Variation: Ruakaka Sand Dune Removal

Purpose

Approval is sought to increase the original contract price from \$478,595.00 to \$610,802.53 excluding GST.

Background

This contract is for the physical works of removing the sand dune at Sime Road, Ruakaka. The purpose of removing the sand dune is to create new sports fields.

- The total stockpile to be removed was approximately 90,000m³ (approximately 25,000m³ remains)
- 50,000m³ has gone to McCathie Road at a cost of \$400,000.00 + P&G
- 5,000m³ has gone to NIWA at no cost, NIWA has paid for the cartage
- 1,953m³ has gone to the Tiki Place for the new recreation centre site at a cost of \$12,206.00
- Apart from McCathie Road and Tiki Place sites all other sites were required to pay for the cartage cost

Council aims to transport the remaining sand away in the autumn when weather conditions reduce the dust problem. Ideally, we will give the sand away in exchange for the contractor importing 200mm of topsoil and placing to finished levels. That would have been our initial approach except there was agreement to pay for the loading and cartage to transport the sand to McCathie Rd site.

The original scope of the contract was to:

1. Remove the vegetation and refuse to a dump site
2. Install a brown rock haul road
3. Cart 50,000m³ of sand to a development site on McCathie Road
4. Import topsoil and cover the site with a 50mm layer for dust suppression

The reason for the increase in cost is due to additional scope. Although there is an overspend on the contract the job has progressed further with significantly more topsoil on site and extra sand removed (5,000m³ to NIWA, 2,000m³ to the Ruakaka Recreation Centre Project) than what was allowed for in the original contract. The additional 3,468m³ of topsoil that has been placed on site at finished design level will reduce the cost of the next stage of the project.

The table below shows the additional scope and associated costs.

Item	Variation	Amount (excl. GST)
1	The volume of material that was removed to the dump site increased from 1,600m ³ to 3,321m ³ . The reason for the large increase in unsuitable material was because it had been estimated that the thickness of the unsuitable material would average 100mm, there were much thicker layers of old tree stumps and branches encountered. Other unsuitable material included vegetation, plastic and concrete rubbish.	\$28,397.00
2	The brown rock haul road was provisional as the sand may have been firm enough for a haul road with importing brown rock. The sand was very soft in places so a volume of 792m ³ was needed.	\$29,411.00
3	The topsoil volume imported to site was increased from 800m ³ to 4,268m ³ . This allowed for a 200mm thick layer of topsoil which will be used in the new sports fields rather than just placing a 50mm thick dust suppressing layer. This means the project has progressed further than expected.	\$20,808.00
4	A rate for spreading the topsoil to finished level had not been accounted for as less work would have been required if a dust suppressant layer only had been applied.	\$43,748.00
5	The Ruakaka Recreation centre have requested 7,500m ³ sand to be stockpiled for the new Recreation Centre building project at Tiki Place. This was an unforeseen cost. 1,953m ³ was stockpiled before the site had to be shut down due to a dust problem caused by dry, windy weather. The balance of the sand will not be carted but will be left on-site at the Tiki Place end of the field near the skatepark.	\$12,206.00
6	Hydroseed with hay mulch was used to stop the topsoil blowing away in dry windy weather and causing a dust problem.	\$22,682.00

Financial

A breakdown of cost for the whole contract is provided in the following table:

Description	Amount (excl. GST)
Original contract value (excl. contingency)	\$453,595.00
Contingency	\$25,000.00
Total original contract value	\$478,595.00
Total amount of variations	\$87,341.75
Total revised contract value	\$610,802.53
Contract Variance	\$132,207.53

Note: The *Total amount of variations* and the *Contract Variance* do not match because some of the overspend is due to an increase to the scheduled quantities (which does not count as a variation).

Chief Executive Approval

It is recommended that the total contract amount of CON19040 for Ruakaka Sand Dune Removal is increased by \$132,207.53 from \$478,595.00 to \$610,802.53 (Six hundred and ten thousand, eight hundred and two dollars and fifty three cents) excluding GST.

5.2 Infrastructure Operational Report

Meeting: Infrastructure Committee
Date of meeting: 11 March 2021
Reporting officer: Simon Weston (General Manager Infrastructure)

1 Purpose

To provide a brief overview of work occurring in the current financial year, across services that the Infrastructure Committee is responsible for.

2 Recommendation

That the Infrastructure Committee notes the Infrastructure Operational Report update.

3 Background

In November 2019, Council adopted committee terms of reference for the 2019 – 2022 triennium, with the purpose of the Infrastructure Committee being to ‘oversee the management of council’s infrastructural assets, utility services and public facilities’.

This report provides the Committee with a summary of Infrastructure operations during January-February 2021.

4 Significance and engagement

The decisions or matters of this Agenda do not trigger the significance criteria outlined in Council’s Significance and Engagement Policy, and the public will be informed via Agenda publication on the website.

5 Attachment

Infrastructure Operational Report – January 2021

Infrastructure Group

Monthly Operational Report

January 2021

Infrastructure Monthly Operational Report

Reporting Officer: Simon Weston (General Manager Infrastructure)

Date: March 2021

Contents	Page Number
Projects Overview_____	<u>3</u>
Infrastructure Development_____	<u>7</u>
Health and Safety_____	<u>9</u>
Waste and Drainage_____	<u>10</u>
Roading - Transportation_____	<u>14</u>
Parks, Recreation and Solid Waste_____	<u>20</u>
Water Services_____	<u>26</u>
Customer Request Management Services (CRMs)_____	<u>27</u>

Projects Overview

Infrastructure Planning & Capital Works

Planning & Capital Works Projects	Current Stage	Estimated Construction Start Date	Estimated Completion Date	RAG Status
Major Projects - Sense of Place				
New Town Basin Park	Construction	Oct-20	Nov-21	
Robinson Asphalts are working on wastewater, stormwater and amphitheatre area.				
Town Basin Wharf & Boardwalk Renewals	Construction	Jan-21	Oct-21	
Construction awarded with New Town Basin Park project contract. Works started in January.				
Ball Clock (3rd party project)	Fabrication	Aug-20	Apr-21	
Off-site fabrication of ball clock progressing.				
Town Basin Bus Facilities Upgrade	Concept Design	Mar-21	Dec-21	
Work underway, kick off meeting held, engineering investigation ongoing, concepts underway.				
Pohe Island Destination Playground & Public Toilets	Tender	Oct-21	Feb-22	
Three contractors issued with the Tender Document. Closes 5 Feb 2021.				
Pohe Island Skate Park	Construction	Jul-20	Mar-21	
Progress against construction programme is on track. Connection to spine path being prepared.				
Tamaterau Carparks Upgrade (TIF funded)	Design & Consenting	Oct-21	Jan-22	
Cultural impact assessment being prepared by Hapū reps for consent, CIA expected in February 2021.				
Restoring the Mauri of Matapouri Stg 1 (TIF funded)	Investigation & Design	Oct-19	Nov-21	
Recycling & rubbish facilities installed. Investigating toilet options. Works on estuary dune protection early 2021.				
Abbey Caves Car Park & Public Toilets (TIF funded)	Detailed design	Apr-21	Sep-21	
Procurement of physical works contractor. Construction commencement planned for April 2021.				
Quarry Gardens Carparks	Investigation & Design	Jan-21	Apr-2	
Design due Jan. Consent reports due Jan-Feb. Stream repairs construction from June, carpark construction from September.				
Major Projects - Parks & Recreation				
Matapouri Beach Restoration	Procurement	Jan-21	Mar-21	
Moving of sand planned Apr-Jul 2021. Works out for tender, closing 25 Feb 2021.				
Princes Road Seawall Renewal	Physical works	Apr-21	Jul-21	
Contract awarded to Huband Contractors. Work scheduled for April-July 21.				
Ruakaka Sports Fields (Sand Removal)	Physical works	Sep-20	Aug-21	
57,000m ³ of sand removed. Removal on hold until Autumn due to dust. Tender for field construction to follow.				
Ngunguru Seawall Renewal	Design	TBC	TBC	
Redesign underway after parts of consent declined relating to reclamation. Preliminary design being prepared.				
Parihaka War Memorial Refurbishment	Completed	Sep-19	Feb-21	
Complete - final lighting configuration working well				
Town Basin Playground Renewal	Completed	Jul-20	Jan-21	
Opened to the public on 29 Jan 2021				
Town Basin Lighting Renewals	Construction	April-21	Jun-21	
Tender awarded. Pole & Luminaires being procured.				
Tikipunga – Sports Field Improvements	Practical Completion	Nov-19	Sep-21	
Field 10 is in kikuyu turf establishment and maintenance period.				
Pyle Road West Seawall Renewal	Procurement	May-21	Jul-21	
NRC & WDC consents granted. Tender documentation to be prepared and released.				
Waipu Youth Activity Zone - Skatepark	Design	Oct-21	Dec-21	
Design complete. Preparation for procurement is underway.				
Cobham Oval Carpark Upgrade	Construction	Oct-20	Jun-21	
Construction commenced October, completion due June 2021.				

Frank Holman Track Renewal	Consenting	Apr-21	Jun-21	
Consent application in progress.				
Major Projects - Water				
Whau Valley Water Treatment Plant	Construction	Mar-19	Jun-21	
Constructing above ground structures. Commissioning dependent on COVID-19 and drought conditions.				
Major Projects - Waste & Drainage				
Whangarei WWTP Discharge Consent Renewal	Options Assessment	n/a	Apr-21	
Adaptive pathway concept was introduced as part of best practical option				
Stormwater Network Consent Applications	Technical Reports	n/a	Dec-21	
Stormwater Catchment Strategic Assessment underway. Data gathering, asset updates & mapping continue.				
Major Projects – Compliance & Regulatory				
New Animal Shelter	Design	Nov-21	Dec-22	
Detailed design completed. Cost Estimate being completed. Land purchase has been completed.				
Major Projects – Venues & Events				
NEC Lighting Upgrade	Design-Build	Nov-20	May-21	
Towers will start being lifted into place from the week beginning 23 February.				
NEC Replacement Roof	Concept Design	Aug-20	Apr-21	
A Value Engineering exercise is being undertaken on the concept design presented in January.				

Three Waters Delivery Plan Projects (\$11.78m DIA Funded)

Three Waters Delivery Plan Projects	Current Stage	Estimated Construction Start Date	Estimated Completion Date	RAG Status
Whareora Rd Watermain Renewal	Construction	Nov-20	Apr-21	
Renewal of 800m PVC main. Construction following on from raw water main upgrade project.				
Rewarewa Rd Watermain Renewal	Construction	Dec-20	Apr-21	
Renewal of 800m AC main. Brought forward to align with roading project.				
Kamo Rd Watermain Renewal	Design	Apr-21	Aug-21	
Renewal of 900m AC main. Required due to pipe failures around Kamo High School. Tendering in February.				
Kioreroa Rd Watermain Renewal - Design	Design	n/a	Sep-21	
Renewal of 2200m AC main. Brought forward to align with CIP/PGF funded roading upgrade project.				
Whau Valley Water Treatment Plant - Stage 2	Construction	Jan-21	Aug-21	
Addition of 2 nd stage filters, PAC dosing, dangerous goods and storage areas.				
Poroti Water Treatment Plant - Design	Design	n/a	Mar-22	
Design only, brought forward due to 2019-20 drought and 2020 floods to provide supply resilience.				
Water Filling Points	Design	Apr-21	Mar-22	
Additional water carrier filling points around the District to reduce transport costs and support the rest of Northland.				
Leak Detection – Water Supply Network	Investigation	n/a	Mar-22	
Programme of work to identify leaks in the network that need to be fixed to reduce water loss.				
Network Modelling – Water & Wastewater	Design	n/a	Mar-22	
Updates to water models, and the Whangarei and Bream Bay wastewater models.				
Asset Condition Assessments – WW and SW	Investigation	n/a	Mar-22	
A programme of CCTV pipe inspections to obtain asset condition information to inform renewal priorities.				
Asset Data Improvements – 3 Waters	Investigation	n/a	Mar-22	
A programme of asset data (eg survey) capture and updating of asset records across 3 waters.				
Enhanced Water Testing at Laboratory	Design	Apr-21	Sep-21	
Increase quality and capacity for testing of water supplies, stormwater and wastewater discharges.				
Hikurangi WWTP – Inlet Screen & Plant Upgrades	Design	Mar-21	Mar-22	
Upgrades to address membrane failure, improve plant efficiency, and improve discharge quality. Long term effluent sampling and various other surveys ongoing.				

Ngunguru WWTP – Inlet Screen	Completed	Jan-21	Feb-21	
Improve plant efficiency and discharge quality.				
Oakura WWTP – UV Upgrade	Completed	Jan-21	Feb-21	
Improve discharge quality.				
Ruakaka WWTP – Wetland Upgrade	Initiation	Jul-21	Sep-21	
Improve discharge quality.				
Whangarei WWTP Building Seismic Upgrade- Design	Investigation	n/a	Mar-22	
Investigate current seismic performance and design of upgrades necessary to meet seismic standards.				
Kauika Rd Wastewater Upgrade - Design	Initiation	n/a	Mar-22	
Investigation and design of wastewater network upgrades to address surcharge and overflow issues.				
Heretaunga St Wastewater Upgrade - Design	Initiation	n/a	Mar-22	
Investigation and design of wastewater network upgrades to address surcharge and overflow issues.				
Te Ao Maori Decision Making Model (CCAP)	Initiation	n/a	Mar-22	
Development of a model to inform decision making on climate change and 3 waters management.				
Matauranga Maori Report & GIS Capture	Initiation	n/a	Mar-22	
Information capture and reporting to inform multiple council and hapu processes, strategies and plans.				
Three Waters Reform Options for Northland	Investigation	n/a	Jun-21	
Investigation and reporting on preferred three waters reform options for Northland.				
Three Waters Request for Information	Reviewing	n/a	Feb-21	
RFI is 100% complete as at 19 February, including responses to queries.				

Waste and Drainage

Waste and Drainage Projects	Current Stage	Estimated Construction Start Date	Estimated Completion Date	RAG Status
CON20055 - Whangarei Sewer Renewal 2019-2021	Construction	Feb-21	Jun-21	
Contract was awarded and construction to commence soon.				
Tikipunga - Heretaunga St Sewer Upgrade Stage 1	Construction	Feb-21	Jun-21	
Work awarded and construction to commence soon.				
Marsden Bay-Ruakaka WWTP Rising Main Upgrade	Design	Jul-21	Dec-21	
Design underway.				
Cove Rd-Waipu WWTP Rising Main Replacement	Tender	Apr-21	Aug-21	
Contract awarded and construction to commence soon.				

Water Services

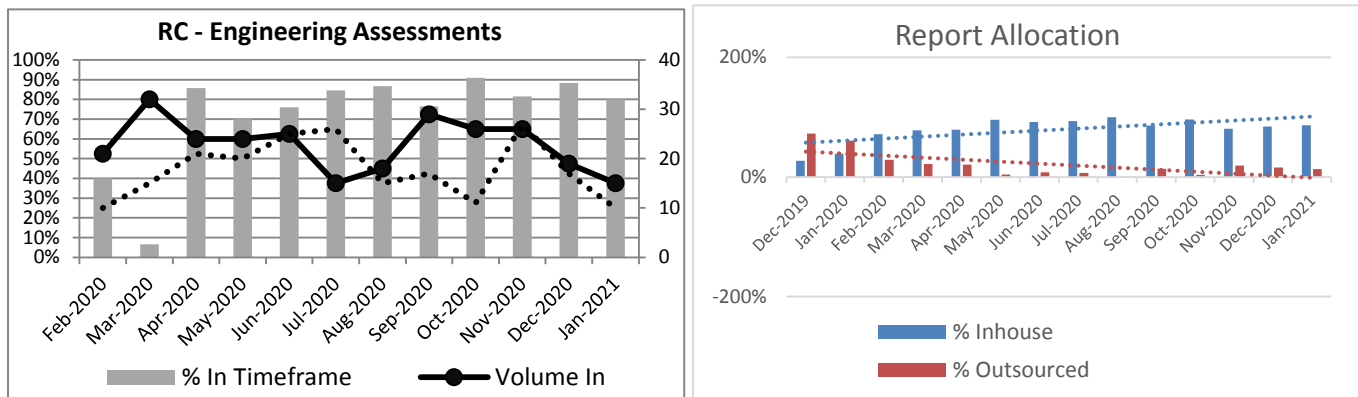
Water Services Projects	Current Stage	Estimated Construction Start Date	Estimated Completion Date	RAG Status
Water Treatment Plant Upgrades	Construction	Sep-20	Jun-21	
Various works, programme being developed.				
Meter Replacement Contract 2019/20	Design	Jan-21	Jun-21	
Focus on large and bulk meters, programme being developed.				
Reticulation Programmed Works	Construction	Jul-20	Jun-21	
Armstrong Ave is next area of works.				
Minor Projects - Emergency Works	Design	Jul-20	Jun-21	
Completion of Ruakaka Clarifiers, other works planned.				
SCADA Upgrade	Construction	May-19	Dec-21	
Ahuroa and Poroti complete – Ruddells next.				

Roading

Roading Projects	Current Stage	Estimated Construction Start Date	Estimated Completion Date	RAG Status
LED Street Lighting – Supply & Install (V Category)	Construction	Jul-19	Jun-22	
Retrofit completed. Southern infill contract - ity work nearly completed. Northern infill contract now underway.				
KSP Stage 5 (Final link to Kamo Village)	Detailed Design	Feb-21	Jun-22	
PR020003 Funding for detailed design complete. Business case accepted and detailed design well underway.				
Dent Street Pedestrian Crossing Upgrade	Design	Sep-21	Nov-21	
Design nearly completed. Construction to coincide with the New Town Basin Park project completion.				
Port / Kioreroa Intersection Upgrade	Design	Nov-21	Nov-22	
Preliminary design underway. Investigations ongoing for services, geotechnical and contaminated land.				

Infrastructure Development

Development Engineering



New Applications

Development	Location	Size (Lots)
Glenbervie Trust	Sands Rd	109
Industrial Units	Marsden Point	
Fit out of level 2 on new maternity building	Hospital	
Several 2 – 8 Lot developments and Land use applications for new single buildings	Various	

Engineering Plans

Development	Location	Size (Lots)
Barrett Homes - Stage 3	Tikipunga	38
Jessie Trust – Stage 1	Sands Road - Tikipunga	8
WFH The Landing Stage 4	One Tree Point	56
Logyard Road	Port Road	9

Developments under construction

Development	Location	Size (Lots)
Puriri Park	Puriri Park Road	37
Breambay Village	One Tree Point	75
Nova Scotia	Waipu	18
Marsden Cove Ltd	Stace Hopper Drive, One tree Point	70
Slatter	Te Hape, Maunu	12
TMB Developments	Three Mile Bush Road	28
Rock Solid	Kamo	91
Totara Parklands – Stage 8	Tikipunga	52
Barrett Homes - Stage 3	Tikipunga	38

The number of applications received in January for Engineering assessment were 15. A total of 10 reports were issued and 4 placed on hold for further information. This is a slight drop from the previous months but in line with the holiday period.

The 8-day level of service for engineering report delivery was 80% in January, a slight drop. Our team relies on input from other departments to complete some of the reports, any delays from other departments has a knock-on effect in our process. The team has been working hard to improve the delivery times. Reliance on external consultants is still ongoing when staff take leave, or we have more applications come in than we can resource. 87% of applications were processed by Council staff in January. The Development Engineers are undertaking an increased number of

inspections. We expect the number of inspections to continue over the summer construction period. The Development Engineers are also attending hearings for notified applications.

The quality of Engineering reports has improved as our new Engineers gain more experience and confidence. We have been receiving a positive response from the planning team on our delivery timeframes.

We receive input from Geotechnical and Stormwater experts as part of the Engineering plan review process due to some sites being subject to high instability risk and flooding hazard areas. Internal staff don't have the expertise to assess these more complex sites.

Our staff have been reviewing the Site Suitability Reports on low risk sites internally and training is ongoing with support from external experts.

The Development Engineers continue to support other departments where there has been a shortfall in staff resourcing particularly the Waste and Drainage and Roading departments.

Development Contributions

January revenue recovery was \$245,745 reflecting the slowdown through the holiday season. Revenue exceeds the budget which was reduced due to the uncertainties of a Covid-19 economy.

40 applications were assessed as requiring contributions in January, these included staged consents.

Infrastructure Support

Contract claims processed for the month of January were 46. Two hundred and fifty purchase orders were processed by the team for January, slightly lower than the previous month due to the holiday break. Business as usual in other areas with 35 Public Utilities processed in January.

Capitalisation of Assets

Current year spend of \$17,544,363.08 which includes \$6,570,844.28 of work carried out for the new Water Treatment Plant. LTP figures for 20/21 year have been updated, there may be some slight changes made in the next few weeks.

A total WIP balance of \$45,113,280.04 across Water, Waste and Parks, which includes \$25,534,049.92 spend to date on the new Whau Valley Treatment Plant. Part of the remaining balance (3,113,814.95) is prior year projects waiting to be capitalised.

Over the next few months we will start to focus on capitalising all completed projects and reducing the wip balances in preparation for year end and the SIMGA go live date.

SIGMA Project – Asset Management System upgrade

First round of testing is under way, this should give us a good starting point to check the data migration has been completed correctly. GIS layers are being built and this requires multiple changes to some asset data. We are working closely with the GIS team to ensure we capture all changes required.

LTP Infrastructure workstream

Audit has been on site since January 18th with the team responding to minor ongoing queries. Documents are being prepared to be submitted to council mid-February.

Health and Safety

Health and Safety Risk Update January 2021

Staff reported incidents

Type of incident	#	Description
Incident		<ul style="list-style-type: none"> Vehicle incident reported when boat trailer backed into a bollard at the Whau Valley dam.

Member of public reported injuries

Type of incident	#	Description
Medical treatment injury		<ul style="list-style-type: none"> A person on a bike cycled into chain that was running across a gravel road to block vehicle access. Park personnel have since reviewed all chains and added reflective and high viz tape to make them more visible.

Contractors

Type of incident	#	Description
Lost time injury	5	<ul style="list-style-type: none"> 3 x Northland Waste runners rolled their ankles on uneven surface, when exiting trucks A Northland Waste contractor sustained a cut on their knuckle that later got infected A Northland Waste contractor slipped off the runner's platform sustaining injuries
Medical treatment injury	5	<ul style="list-style-type: none"> Cut sustained by Northland Waste runner's hand when sorting glass recycling and a broken bottle in bottom of bin Cut sustained by Northland Waste Worker when picking up a rubbish bag and a sharp item poking out A Hydrotech worker chipped a tooth when prodder stuck worker in mouth while prodding A Downer worker fell into a chamber while lifting a manhole lid, then the lid fell onto their back A Hydrotech worker had a finger caught in moving concrete mixer while holding handle
Minor injury	5	<ul style="list-style-type: none"> A Northland Waste worker suffered rolled ankle strain on uneven ground A Downer worker had an item drop on their foot A Northland Waste worker had an item drop on their foot while sorting scrap at a transfer station Hydrotech (And Council employees) workers sustained wasp stings when a hose was dropped into a wasp nest, during some work at night A fitting under pressure gave way with force hitting a Hydrotech worker in ribs
Pain and discomfort	1	<ul style="list-style-type: none"> A Northland Waste worker suffered pain after repetitive task of sorting glass
Incidents	6	<ul style="list-style-type: none"> Hydrotech reported a Blow back incident when cleaning waste lines into private dwelling. Home owner had not been communicated with effectively. Intergroup reported a solvent related incident when a container cracked and released solvent into a bunded area. It was some time before this could be safely pumped out and removed Recreational Services reported a small grass fire from a hot mower A Northland Waste truck clipped a low hanging phone line A Hydrotech worker reported they dropped phone into manhole Northland Waste reported a vehicle near miss incident when a car almost clipped them on a blind corner

The above does not contain Roadway Department injuries and incidents as these are now being reported via NTA.

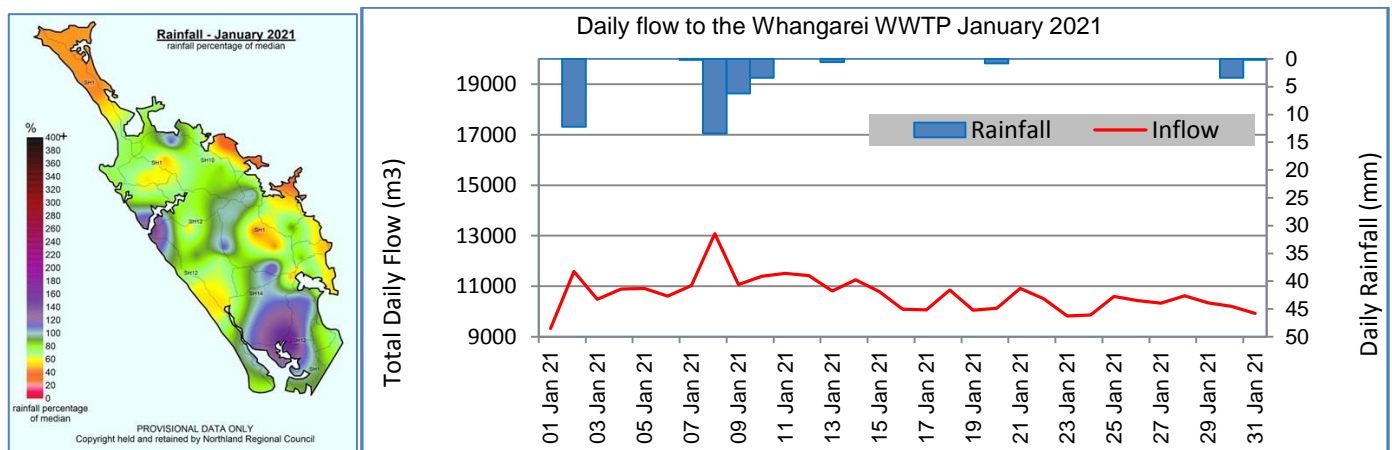
Waste and Drainage

Operations and Maintenance

Whangarei WWTP

Whangarei wastewater treatment plant received a steady low flow during the month of January. The month was relatively dry, and no bypass occurred.

There was one small peak to the inflow – just over 13,000 m³ - which occurred on the 8 January and coincided with a small rainfall event which recorded 13.4mm of rain.



NRC image depicting the percentage of normal rainfall and graph showing the total daily flow into Whangarei WWTP in January 2021

Activities carried out at the main plant during January included:

- The diaphragm was changed on the thickened sludge pump 2.
- The Gravity Belt Thickener (GBT) was cleaned including the solenoid for the wash water
- The drive wheel on secondary clarifier 2 had delaminated and got swapped out.
- The secondary clarifier gearbox was replaced, and the failed unit reconditioned. The motor was sent to Contractors for bearing replacement.
- Channel 1 pre-lim pumped down and cleaned and inspected.
- The Waste Activated Sludge (WAS) room was cleaned and pressure washed.
- Brushes were replaced on band screen 1 screw conveyor, spare brushes to be ordered.
- The hard facing Boiler 2 was serviced.
- The grit classifiers were inspected, and no repairs required at present.
- UV services were completed.
- The EQ mixer was inspected.
- The spark plugs and leads were replaced on the biogas generator.
- The pre-lim sump pump failed; replacement was purchased and installed, chamber vacuum loaded.

Whangarei WWTP Resource Consent Renewal project

Adaptive pathway concept has been introduced to operations and planning team. This is a planning concept with the use of adaptive paths of planning for a range of future uncertainties and developing flexible long-term strategies that allow for adaptive responses to different plausible futures or outcomes. It relies on establishing trigger points (e.g. capacity limits or review conditions) to respond to drivers (e.g. consent compliance or capacity increase for growth) and desired outcomes (e.g. higher percentage of effluent reuse), to transit from a path to another option.

An offer of service was received from our consultants for carrying out the air discharge assessment to support the renewal consent application. The offer presents a Frequency, Intensity, Duration, Offensiveness and Location (FIDOL) assessment tool approach for assessment and includes undertaking an odour survey over a 10 day period in February. This is being considered.

Rural WWTP Major Operation & Maintenance

Ngunguru

- The UV system was cleaned.
- The MABR (Membrane Aerated Biofilm Reactor) froze, unfrozen by cycling power.

Tutukaka

- The sensor brushes replaced.
- The UV system was cleaned.

Oakura

- There was a fault with effluent pump 1; running better following program changes but dig up required.
- Weeds were sprayed.
- Inlet screen brushes were replaced.
- Disposal filters were changed.

Hikurangi

- Ongoing long term influent and effluent quality monitoring ongoing.
- The transfer pump with phase imbalance was removed and a spare pump installed.

Ruakaka

- Contractor is working on the wetland upgrade as per 3 Waters Funding Project.
- An irrigation pod was repaired after it was driven over and damaged by 4WD.

Waipu

- The screenings bin was emptied.

Portland

- Security fencing work to be resumed. 80% work completed. 20% remaining due to internal road of the plant to be extended.
- Portland wetland road way widening completed.

Reticulation

There were two recorded spill incidents in the January period:

Date Spill Started	Date Spill Detected	Date Spill Ceased	Location	Cause	Volume (m³)	Type of Sewage	Action Taken
15/01/2021	15/01/2021	16/01/2021	Te Rauponga Drive below 51a Ogle Crescent Kamo	Downstream line blocked with large rocks and debris due to line being compromised under creek.	<10m³	Raw/unscreened	NRC and DHB notified, line cleaned numerous times.
unknown	27/01/2021	28/01/2021	Between 51a Kiripaka Road and 34 William Jones Drive Otangarei	Rag solids blockage in upstream manhole on aerial crossing.	<50m³	Raw/unscreened	NRC and DHB notified, all upstream manholes in bush area checked, water quality samples collected, line heavy cleaned several passes, signs placed at top and bottom of Mair Park.

Stormwater complaints under investigation

No	Location	Region	Description of problem	Responsibility (Waste & Drainage unless otherwise stated)
1.	Wrack street, Kensington	Kensington	WA092872 Water team removed the water main, operation team will carry out further investigation	
2.	8 Mair St, Kensington	Kensington	Stormwater concerns	
3.	18 Zealandia Street	Kensington	WA093237	

No	Location	Region	Description of problem	Responsibility (Waste & Drainage unless otherwise stated)
			Stormwater drain on Mains Avenue is not working properly and the water is running straight down to Zealandia Street. Because Mains Avenue is higher, the water runs down and floods the properties on Zealandia Street.	
4.	13 Henry Street	Kensington	WA094012 Customer is very upset that the garage at her property at 13 Henry St flooded. She says the pipe was blocked when the Kamo Shared Path and there was nothing there for stormwater.	
5.	30 Russell Road, Kensington	Kensington	Large volumes of stormwater caused damage to property during flood event	
6.	Kent Road, Regent	Regent	Storm water issues at Kent Road - manhole pops at the small roundabout at Kent Road during big rain events and floods downstream properties.	
7.	Shortland Street, Regent	Regent	Flooding at the intersection of Mill and Kamo Road – investigate connecting SW drainage along Donald St to Hatea Drive	
8.	48 Handforth Street, Onerahi	Onerahi	WA092143 Runoff from airport into roadside drain and swale that directs water across road into properties causing flooding	Roading
9.	McKenzie Ave walkway, Onerahi	Onerahi	Concerned about possible inadequate stormwater reticulation on McKenzie Ave walkway	
10.	64 West View Crescent, Onerahi	Onerahi	WA093082 Stormwater grate near property and 66 West View Crescent is not big enough. After the big flood in July their properties got flooded out.	
11.	29 Weir Crescent, Onerahi	Onerahi	Flow from road not being intercepted by roadside drainage and flows down driveway of lower property	Roading
12.	64 Beach Road, Onerahi	Onerahi	WA090283 Stormwater run-off from the airport has washed out a lot of the property at 64 Beach Road	
13.	2 Kaiwaka Road, Onerahi	Onerahi	WA091997 July storm damaged the customer's property with the run off of water from the airport.	
14.	Sorrento Street, Onerahi	Onerahi	Stormwater grate near property is not big enough. After the big flood in July their properties got flooded out	
15.	10 Montague Place, Onerahi	Onerahi	Stormwater grate near property is not big enough. After the big flood in July their properties got flooded out	
16.	272 Beach Road, Onerahi	Onerahi	Drainage discharging directly onto road	Roading
17.	Weir Cres / Cliff Street	Onerahi	WA092952 Inadequate size of road catch pits, heavy runoff from airport catchment, heavy rain events often created flooding in downstream properties. Stormwater drain above 2 Cliff Street is not working.	
18.	59 Church Street	Onerahi	WA093311 Requested to increase stormwater network along church street to mitigate flooding intensity in downstream private properties.	
19.	20 Roderick Place	Onerahi	WA094991 Stormwater capacity near 20 Roderick place. Customer's house flooded in the July storm and has only recently been able to move back in. Please contact the customer	
20.	10 Nottingham Road	Onerahi	WA093252	

No	Location	Region	Description of problem	Responsibility (Waste & Drainage unless otherwise stated)
			Existing sw culvert is open & uncovered, customer request to check the possibility of closing this culvert for safety of his vulnerable daughter with mental health.	
21.	14 Porowini Avenue, Morningside	Morningside	WA090402 Constant flooding of the buildings and land on this site	
22.	Whangarei Club on Rust Ave, (CBD)	(CBD)	Due to the major storm they have roof issues. I have been on the GIS system and can't find the pipes nor cesspits that are showing in this picture attached	
23.	240 Western Hills Dr, Avenues	Avenues	The culvert along the drive has been eroded significantly in the storm and has put our water meters, driveway, sewer line and road side power pole at risk.	
24.	4b Dundas, Riverside	Riverside	Road drainage that is causing issues for a retaining wall	Roading
25.	6 Surfside lane, Ruakaka	Ruakaka	Private soakaway blocked and garden is a swimming pool – collects water from other properties. Depression area in private property, check feasibility of sw network upgrade	
26.	Dune Lake, Ruakaka	Ruakaka	Operation team met the local resident. NRC was updated about the development. It was suggested that local ratepayers draft a proposed action plan and obtain approval from WDC, NRC, IWI and DOC Meeting to follow.	
27.	103 Station Road, Kamo	Kamo	SW is being channelled from 103 Station Rd and directed into a lower property	
28.	16 Mcainch Place, Kamo	Kamo	Storm flooding in properties	
29.	Kamo Road		WA092758 Query: can the hump in the road between King St and Zealandia St be removed to allow water to flow down Kamo Rd? This is probably a geometric alignment issue and drainage has probably been designed to suit.	
30.	275a Kamo Road, Whau Valley	Whau Valley	Open drain has been piped – capacity issues have resulted	
31.	120 Tauroa St and Acacia Park, Raumanga	Raumanga	Private stormwater drainage damaging private roads – customer maintains stormwater belongs to Council and Council should manage repairs	
32.	20 Eilean Donan Drive, Waipu	Waipu	Flow from Right of Way culvert concentrating flow onto receiving property. Receiving property has constructed a bub to prevent this, thus damming flow	
33.	St Marys Rd Waipu	Waipu	Roadside swale has been infilled to construct footpath and road berm. Pipe is very shallow at discharge and is being damaged by being driven over	Roading
34.	Austin Rd / Belle Lane, Maunu	Maunu	Belle Lane and Austin Road – flooding to properties and schools on lower side of Austin Road. Issue with soakage trench capacity.	
35.	94 Corks Road, Tikipunga	Tikipunga	Raising of land adjacent to Totara Parklands development has increased likelihood of flooding to this neighbouring property	
36.	Glendale Rd, Woodhill	Woodhill	Entrance to stormwater pipe requires a grate to catch debris coming down from Coronation reserve	
37.	23 Stuart Rd, Reotahi,	Whangarei Heads	Council infrastructure inadequacies damaging my property	
38.	46E Kohe Street, Parahaki	Parahaki	Stormwater Drainage running down private Right of Way and causing damage	
39.	261 Oakura Rd, Oakura	Oakura	Overland flow path has been blocked by new building which has been built at a higher level	Building

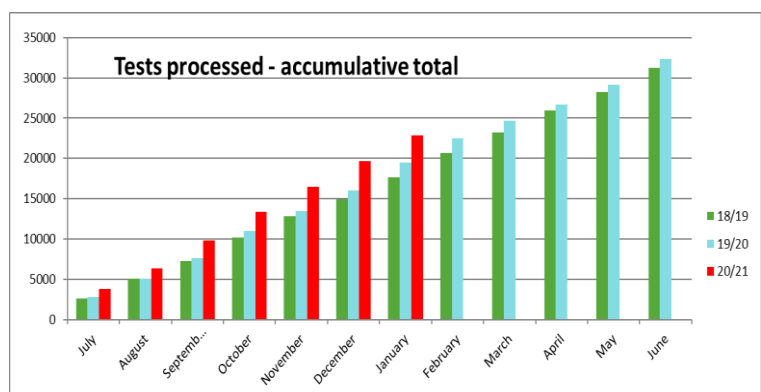
No	Location	Region	Description of problem	Responsibility (Waste & Drainage unless otherwise stated)
40.	32 Whangaumu Rd, Tutukaka	Tutukaka	Flooding to lower lying properties across the road	
41.	29 Muritai Road	Parua Bay	Concerns around easement for sw & ww drainage, flooding of swale in #29 and driveway of #11 Muritai Rd	
42.	69 George St Hikurangi	Hikurangi	Open drain is really effectively on the boundary of the two properties here – scouring is undermining properties WA095519	
43.	1 Union Street, Hikurangi	Hikurangi	Caller advises that there is a stormwater drain that runs along the side of their fenceline and they want to fill it in. It is overgrown etc. They have been told it is a private issue.	

Laboratory Report

For January 2021 738 samples were analysed for 3140 tests. 25% of the tests were subcontracted and 36% of results were reported within 5 working days.

This continues to indicate significant increase in testing for the same period in the previous year.

Graph shows the test numbers for year ending 30 June.



Roading - Transportation

Maintenance Contracts

Programmed works completed during **January** were as follows:

- Metal overlays were carried out on Helmsdale Road and Rotemate Road.
- Waitotira rehab is going as planned. Poplar trees were removed early January and although there were some minor changes to associated improvements, this has not hindered the progress of the construction phases. A new boundary fence was installed on the Tuckett's Pavement overlay is at 80% underway and the expected completion is forecast for mid-February 2021.
- The tie-in to State Highway 14 and Westwood lane intersection was completed mid-January. Structural AC was the approved solution due to the heavy traffic load.
- It was great to see Mill Road section Pavement Rehabilitation come to fruition ahead of schedule. With a seamless planning and execution, the delivery team doubled up the effort to open the road before Northland Anniversary Weekend. Numerous commended notes were received from the client, commuters, residents and businesses on this section. Furthermore, there was a significant drop in CRMs and concerns from residents as a no effort was spared to communicate with the residents on the phases and changes during construction.
- A total of 1409.2m² of stabilising patches have been completed over various sites including Doctors Hill Road, Pyle Road East, McEwan Road, Marsden Bay Drive, Marsden Point Road and Ferry Road.
- All 19/20 pre-seal repair stabilising patches been completed.
- Portland Road won't be completed until Fulton Hogan has completed their State Highway intersection works.
- It has been a busy resealing month - chipseal sites sealed in January were:
 Smeaton Dr, Litchfield Pl, Limestone Pl, Tauroa St (Top), Isola St, Cross St, Gorrie Rd, Harbour View Rd, Handley Pl, Raurimu Ave, Friendship Pl, Cockburn St, First Ave, Wilson Ave Sth, Cresta Pl, Ngaio St,

Hodgson St, Balmacewan Dr, Ogle Cres, Garden Pl, Jeeves Pl, Maungakarama Rd, Henry St, Pentland Rd, Third Ave, Steadman St, Pukenui Rd, Te Hape Rd, Newton Rd, Mackesy Rd, Waioneone Rd, One Tree Point Rd, Plover St, Steere Pl, Thomas St, Tapper Cres, Dinniss Ave, Tennyson St, Jellicoe St, Charles St, Puriri St, Matai St, Logan Pl, Amalin Dr, Ketenikau Pl, McLean St, Argyle St, Hamon Rd, Heatherlea Dr and Waiotira Rd.

- Culvert clearing and water tabling continues around the network from July 2020 Storm Damage; Tavinor Rd, Taipuha Rd, Shoemaker Rd.
- Water-tabling – Elmsley Rd, Old Onerahi Rd, Camelia Ave, Kokunui Rd, Ruarangi Rd, Waipu Caves Rd, Taipuha Rd,
- Asphaltic Concrete overlays – Beach Rd, Handley Rd, Memorial Dr, Parihaka St, Tiki Pl, One Tree Point Rd.
- Temporary failure repairs – Church St, Mititai Rd, Waiotira Rd, Breton Dr, Settlers View.
- Installed new pedestrian crossing - Cross St.
- Laid kerb blocks - Whangarei Heads Rd.
- Finishing of fence - Memorial Dr.
- Make safe tomo – Crawford Cres, Cairnfield Rd and Neville Rd.
- Low shoulder – Miraka Rd, Omana Rd and Newton Rd.
- Digout and box culvert clearing along foot of bank - Dundas Road.
- Lime Rock Heavy Metal Overlays completed - Campbell Rd and started on Whananaki South Rd.
- Enabling works completed on Whananaki South Rd and Gomez Rd prior to overlays.
- Digouts and stabilisation completed in Mt Tiger, Ngunguru, Kaiatea, Matapouri and Puhipuhi Areas.

Storm Damage

- Our crews are working through the last of the July 2020 Storm Damage and have made steady progress toward completing this work.
- We have had two digger crews that have been building rock walls and cleaning damage in the following areas: Abbey Caves Rd, Mountain View Rd, Tongatu Rd, Smith Rd, Rockell Rd and Morgan Rd.
- New construction drop outs – Awaroa River Rd, Hayward Rd and Russell Rd

Routine Works completed this month were as follows:

It has been a busy start to the new year and our crews have been working through our routine work and CRM's of sealed potholes, trip hazards, grates, unsealed potholes, road sweeping, etc

- Channels and grates continuing to be cleared.
- Edge breaks – Water St, Tavinor Rd, Dave Culham Dr, Memorial Dr, Three Mile Bush Rd, Kiripaka Rd, Austin Rd, McGill Rd, Snooks Rd, Omana Rd, Waiotira Rd, Mair Rd and Doctors Hill Rd.
- CRMs are increasing for unsealed roads, however we have been unable to grade due to the lack of rain. Inspections are ensuring the roads are still in a safe condition for public.
- Culvert inspections have been completed in the Russell Rd and Whananaki Areas.
- We have started a round of cyclic edge marker post cleaning this month and we are looking to complete in February.
- Sumps cleaned - 54 in Waipu and the Port.
- Street sweeping - 1143 roads – 331 kms - Maungakarama, Tikipunga, Onerahi, Waipu, Ruakaka, Maunu, Central, Kamo, Regent, Portland, Morningside, Smeatons, Woodhill, One Tree Point, Mairtown, Whau Valley, Otaika, Raumanga, Kensington, and Port.
- Due to the very dry conditions we trialled using the drag broom on some runs instead of the grader with limited success. These roads were Codlin Rd, Otuhi Rd, Harwood Rd, Johnson Point Rd, Glenmohr Rd, Tangihua Rd and Waipu Caves Rd.

Projects started in December 2020/January 2021

Category	Sub activity	Location
----------	--------------	----------

341 - Low Cost Low Risk	Bridge	Mangapai Road - Moewhare Turnoff 133a
341 - Low Cost Low Risk	Pedestrian Improvements	Cross Street
Seal Extension - Unsubsidised	Seal Extension	Attwood Road
215 - Structures Component Replacement	Bridge	Heavy Maintenance WDC bridges (Full Network)
215 - Structures Component Replacement	Bridge	Marsden Point Road - Sergeants 102b
341 - Low Cost Low Risk	Bridge	Cemetery Road Culvert 871c

Projects to start in February 2021

Category	Sub activity	Location
214 - Sealed Road pavement rehabilitation	Rehabs	Westwood Lane
341 - Low Cost Low Risk	Speed	Various sites - Speed limit infrastructure
Seal Extension - Unsubsidised	Seal Extension	Brooks Road
Seal Extension - Unsubsidised	Seal Extension	Massey Road
Seal Extension - Unsubsidised	Seal Extension	Nook
Seal Extension - Unsubsidised	Seal Extension	Tahunatapu Road
215 - Structures Component Replacement	Bridge	Reyburn Street - Reyburn Street B6
341 - Low Cost Low Risk	Bridge	Whangarei Heads Road

WDC Significant Projects

Category	Sub-activity	Location	% Complete	Monthly Update	Next month planned activities
125 - Footpath Maintenance	Footpath Renewal	Rose Street	n/a	Planning, concept design and consultation	Planning, concept design and consultation
214 - Sealed Road pavement rehabilitation	Rehabs	Maunu Road	1%	Contract awarded to Downer	Contractor begin design options
214 - Sealed Road pavement rehabilitation	Rehabs	Mill Road	73%	Section 2 Pavement Works Complete. Ancillary works - traffic islands etc. to be completed this month	Works completed
214 - Sealed Road pavement rehabilitation	Rehabs	Rewa Rewa Road	7%	Contractor design underway	Construction commence end of March
324 - Road Improvements	Intersection	Springs Flat Intersection (Using Jeffs carry over amount)	n/a	n/a	n/a
324 - Road Improvements	Intersection	Maunu/ Porowini Intersection	53%	Construction complete and Practical Completion Certificate issued. Final paperwork to come (asbuilts etc.)	12 month Defects Period. Receive close-out documents and final claim from contractor.
341 - Low Cost Low Risk	Bridge	Whangarei Heads Road	0%	Finalising deliverables / commencing physical works	Continue with physical works
341 - Low Cost Low Risk	Intersection	Robert/Walton Intersection	50%	Progress detailed design	Progress detailed design
341 - Low Cost Low Risk	New Footpath	Rose Street and Lower Bank Street Pedestrian Crossing	9%	Test pits to locate services on the site have been undertaken.	Test pits for the pavement design will be undertaken and completion of the preliminary design. Bus turning trial to be undertaken. Safety audit to be undertaken and pavement design to commence.
341 - Low Cost Low Risk	New Footpath	One Tree Point Road	100%	Physical works completed, minor snags need addressing	Address snags and as-builts Post-construction safety walkover
341 - Low Cost Low Risk	Pedestrian Improvements	Dent Street Pedestrian Crossing Upgrade	3%	Concept Design and first safety audit completed and community engagement.	Continuing detailed design including changes proposed from Safety audit
341 - Low Cost Low Risk	Safety	Ngunguru Road - Murphys Cnr	13%	Treatment options identified which align with the Problem Statement completed in late 2020.	Progress detailed design to implement signage and road marking improvements by June 2021. Continue to refine options of larger scale treatments for implementation next LTP period.
341 - Low Cost Low Risk	Safety	Cove Road	0%	Engagement of planner (and supporting consultants and lwi) to seek NRC consent	Lodge application for resource consent, receive resource consent and tender works.
341 - Low Cost Low Risk	Speed	Various sites - Speed limit infrastructure	0%	Detailed Design is close to final	Ask maintenance contractors to price and programme
341 - Low Cost Low Risk	Traffic Calming	Hikurangi Township (King Street/George Street/Valley Road)	100%	Working through safety audit and completing minor outstanding works.	Address issues outlined in Post Construction Safety Audit to complete construction stage.
452 - Cycling Facilities	Cycleways	Kamo cycleway Stage 5 (Fisher Tce to Station Rd)	18%	Design progressing and scope/ budget increased.	Continue progressing design alongside KiwiRail.
Bus Shelter Renewal	Public transport	Rose Street Bus Terminal	0%	Test pits to locate services on the site have been undertaken.	Test pits for the pavement design will be undertaken and completion of the preliminary design. Bus turning trial to be undertaken. Safety audit to be undertaken and pavement design to commence.
New Footpaths - Unsubsidised	New Footpath	Whangarei City Wide (Sense of Place) c/o from 19/20	0%	On hold until footpath template for City Core confirmed	n/a
Redeployment Package	New Footpath	One Tree Point Road	100%	Physical works completed	Project Closed
Redeployment Package	New Footpath	Gillingham Road	100%	All key work items completed	As-built DWGs and final quantities; issue the Practical Completion Certification (PCC)
Redeployment Package	New Footpath	Ngunguru Road from Whg Falls to (or close to) Ngunguru Rd path	48%	Construction is underway	Complete all key work items
Redeployment Package	New Footpath	Tauraroa Road, Maungakaramea	100%	All key work items completed	As-built DWGs and final quantities; Issue the Practical Completion Certification (PCC)

High Risk Rural Roads:

- The NTA has developed 14 Standard Safety Intervention (SSI) applications for key High Risk Rural Roads and intersections across Northland. SSI application are simplified Single Stage Business Case (SSBC), tailored for Road Safety interventions. Focus routes for Whangarei are;
 - Cove Rd – Culvert extension (roadside barrier removal), Waipu Cove (planned early 2021).
 - Whangarei Heads Rd – design of curve advisory and delineation upgrade (planned to start by June 2021).

Speed Management:

- Tranche 1 – Council has adopted the recommendations report for Tranche 1, implementation planned 2021;
 - I. Te Toiroa Rd (Legal Unformed Road) Ngunguru, which forms part of the Old Ngunguru Coach Trail.
 - II. Vinegar Hill area
 - III. One Tree Point / Marsden / Ruakaka area
 - IV. Waipu Village
- Tranche 2
 - I. 2A – Bream Bay (Cove Rd) – concurrent with Kaipara's Mangawhai area. Consultation completed November/December 2020, Hearing and Decisions planned for early-mid 2021, and implementation mid-late 2021.
 - II. 2B – Whangarei Heads. Planning started for consultation for early-mid 2021, implementation (2021-22).
- Tranche 3 (2021-22) – Tutukaka Coast (Ngunguru Rd and Russell Rd) and Bay of Islands (Opua / Russell). These two areas will be reviewed concurrently with Far North's Russell catchment area to ensure a seamless and coherent approach to both consultation and delivery of speed management.

Walking and Cycling (Urban):

- Kamo Shared Path
 - I. Funding for Stage 5 has been approved and the detailed design is underway. Stage 5 includes the final link to Kamo Village. Construction planned for next LTP (2021-24).
- City Centre including Onerahi link and improvements to Hatea Loop – Is now part of the City Core workstream.
- 10yr Implementation Plan – to bring together the City Core Plan works, our Walking & Cycling Strategy and Blue Green Network Strategies. We have engaged Viadrada to develop a 10-year plan, which will complement these high-level strategies, with more detail and prioritisation of sections. Draft report due early-mid 2021.
- Tikipunga Cycle Trail Stage 1 – Council received \$400k from government (Redeployment Fund) as part of the post-COVID stimulus package. This funding is being used to develop a gravel trail between Vinegar Hill Rd and Ngunguru Rd, effectively extending the Hatea River Walkway to connect with Totara Parklands river path.
- Council received \$6m from the Crown Infrastructure Projects (CIP) – contract (MBIE) has been signed. Works;
 - I. \$0.5m Kamo Shared Path – Link to Kensington Park Stadium. Design & Implement 2020-21.
 - II. \$0.5m Tikipunga Cycle Trail (Stage 2) – continue path from Ngunguru Rd (Whangarei Falls) to Vinegar Hill Rd, connecting with Totara Parklands River Trail. Includes a 12m bridge. Implement 2020-21.
 - III. \$5m Raumanga Shared Path; Cafler Park to SH1 / Tarewa Park – design (2020-21) and implement by 2023.

Waipu Walk & Cycle Trust

- Stage 2a Cullen Rd to Waipu Cove – Physical works is complete, except for the culvert extension works (Council project) planned for 2021-22 and final trail surface – See High Risk Rural Roads.
- Stage 2b McLean Rd to Cullen Rd – works is nearly complete.
- Stage 3 Riverview Place to Cullen Rd – planned for future years as a joint Trust and Council project, due to scale and complexity.
- Future; Waipu to One Tree Point – NZTA (Waka Kotahi) have 100% funded \$195k towards detailed design of this route to complement the Ruakaka to Whangarei City trail being designed as part of the Whangarei to Ruakaka SH1 Corridor improvements project (NZUP). NTA is managing this design.

Whangarei Heads Trail

- Whangarei Heads Rate Payers Association, with a grant from Council are developing a proposal to build a trail connecting McLeod Bay and Parua Bay Village. Scheme design is complete, consultation/engagement has started. The Ratepayers Association will then seek Council assistance to implement the trail.

LED Street Light Conversion

- The installation of the V-Category (arterial road) retrofit lights (ie swapping the old light for new LED) has been completed.
- The Southern V-Category infill streetlight contract (ie those requiring new poles) was awarded to Currie Electrical on 16 March 2020 and is well underway. This portion of the work is likely to be completed by the end of February 2021. This contract also includes new streetlights in the southern half of the Whangarei District and all of the new lights in the Kaipara District. This portion of the work will be undertaken in the 2021/24 LTP.
- The Northern V-Category infill streetlight contract has been awarded to McKay Electrical. This contract includes new streetlights in the northern half of the Whangarei District and all of the new lights in the Far North District. The work on the northern city is well underway. This contract has an extended completion timeframe of June 2022 due to budget constraints.
- We are currently investigating both Auckland Transport's central management system (CMS) and other "Smart Cities" type CMS to control the new LED streetlights. A trial may be done in 2020/21 to confirm whether a CMS system should be rolled out over the network in the 2021/24 period.

Port / Kioreroa Intersection Upgrade

- Council received \$10m from the Crown Infrastructure Partnership (CIP) for the widening of the Port Road bridge across Limeburners Creek to provide 4-traffic lanes and a shared path. The contract was signed by MBIE in late November 2020.
- The council will also be seeking \$6m of subsidised funding from NZTA to carry out the Port / Kioreroa intersection improvements in conjunction with the bridge widening works. A business case for this funding is starting to be prepared, and this funding has been allowed for in the 2021/31 LTP. This intersection upgrade work is still subject to funding approval.
- Preliminary designs are well underway, and the detailed design will commence in February 2021.
- Investigations to locate services on site are on-going and geotechnical investigations are to commence in mid-February. Investigations to identify any contaminated soil in the old fertiliser works site will also be undertaken in February in preparation for the new intersection layout.
- Consent applications and contract documents will be prepared in February and construction is expected to commence on the bridge widening in May 2021. Completion of the bridge widening is expected to be completed in February 2022 and the intersection upgrade (if it proceeds with funding) is expected to be completed in November 2022.

Whangarei District Road Safety Promotion Report for January 2021

Overview of the Stop Alcohol Impaired Driving (SAID) programme

Last month I included a brief overview of our Drive SOBA Programme and received a number of responses for an insight into some of our other programmes—this month we are looking at our Stop Alcohol Impaired Driving Programme, this information was sourced from Bronwen Wood (registered Psychologist and the founder of this programme).

A description of what the programme entails, long it runs for, and how people become involved in it:

The focus of the course is on reducing drink driving by providing education around alcohol, alcohol impairment and drink driving. SAID is delivered by trained facilitators for two hours once per week over three weeks. The course is evidenced based around what works to reduce re-offending specifically focusing on drink driving behavior. The programme focuses on changing behaviour and justifications around drink driving as well as providing attendees with problem solving skills, awareness of the consequences and planning prior to drinking.

Referrals are accepted from all agencies who work with drink drivers, we have a direct referral with Police, Probation, Justice, NDHB and NGO agencies. The most direct referral is via Magistrates when drink drivers first present at court. There is an option to defer sentencing until completion of the course. The District Judges make use of this but uptake has been limited with magistrates despite numerous meeting to set up a convenient direct referral and update process.

An indication of how successful the programme is:

A list of those who completed the SAID course between August 2012 and May 2015 was sent to NZ Police (Whangarei) in May 2017 to determine the rate of re-offending. The data indicated that 91% of those who had completed the SAID course had not been caught re-offending. An updated list will be sent to NZ Police to review the re-offending rate.

In June 2020, data was sent to Police with the consent of participants to analyse the re-offending rate. The data indicated that from July 2017 to December 2020, 89% of those who completed the SAID course had not re-offended.

When did the programme begin and why?

SAID first started in August 2012. There was no other programme available for 1st or 2nd EBA offenders in Northland. The programme director developed the Drive Soba Programme for recidivist drink drivers.

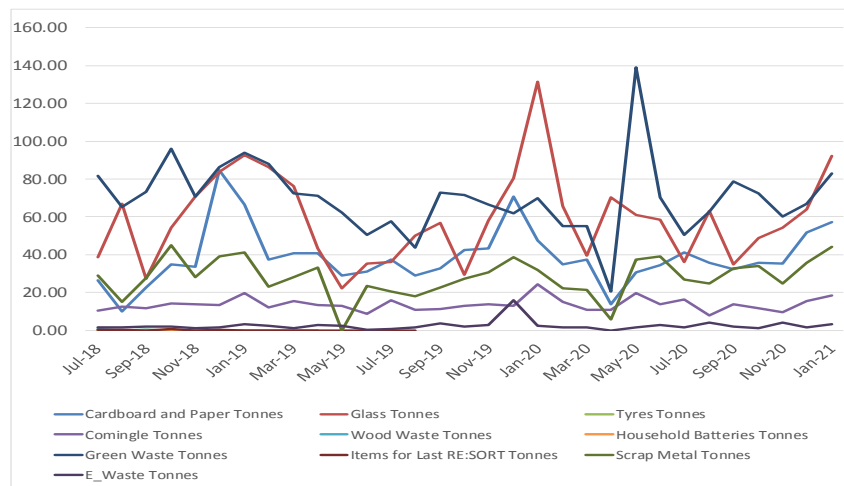
Parks, Recreation and Solid Waste

Operations

Solid Waste Operations

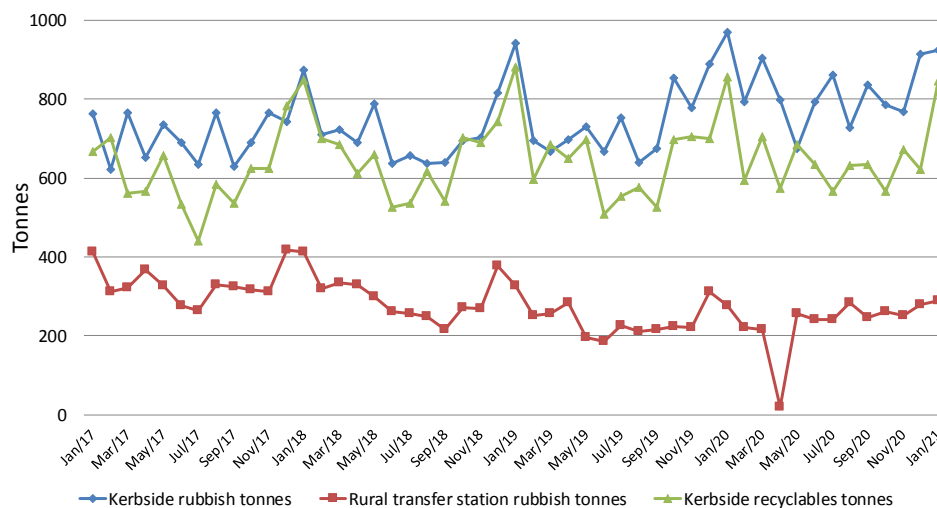
The Christmas and New Year period was very busy as usual with large volumes of waste and recycling collected. The extra collections in the coastal areas did not collect much waste with the majority of households using just the regular collection day.

The amount of material collected at the rural rubbish and recycling stations for recycling (298 tonnes) was slightly more than the amount of rubbish collected (290 tonnes). The tonnages of the material streams collected for recycling are shown below:



Monthly waste tonnages are shown in the table and chart below

Solid Waste Tonnes Jan 2017 - Year to Date



Rubbish Collection Tonnes	2020/21	2019/20	RTS Tonnes	2020/21	2019/20	Recycling Tonnes	2020/21	2019/20
June		793	June		241	June		633
May		675	May		256	May		684
April		798	April		20	April		575
March		903	March		215	March		705
February		793	February		221	February		593
January	859	969	January	290	277	January	847	856
December	914	889	December	280	311	December	622	699
November	767	779	November	252	220	November	673	704
October	784	853	October	261	224	October	567	698
September	836	674	September	246	217	September	633	525
August	728	638	August	238	210	August	633	577
July	862	753	July	246	226	July	566	554
Total for period	5814	9517	Total for period	1813	2638	Total for period	4541	7803

Public Toilets

17 temporary portaloos have been deployed to help cope with the peak demand over the summer period at beach locations. They will be removed after Waitangi weekend.

During January, all public toilets were inspected to ensure COVID-19 QR codes were still on display.

Walking Tracks

Repair work following the storm last July is now finally nearing completion. A particularly tricky part of the Frank Holman Track within the Coronation Reserve has dried sufficiently to allow resurfacing using a helicopter. The same helicopter was used to transport material onto the Hatea Walkway between the Falls and Swing Bridge, completing this badly damaged section. The Hatea Walkway between Whareora Road and Vale Road is now complete also, some of the worker redeployment team (now 4 members) being used to assist in this and offset some of the cost. Repairs to our walking tracks following the storm will amount to about \$500k including the replacement of the footbridge at AH Reed, which is pending consenting.

The Tikipunga cycle trail is now complete between Whangarei Falls and Vinegar Hill Road bar the new bridge which still requires consent. Minimizing potential damage to trees has resulted in some additional effort and repositioning of the bridge footings, with input from Treescape and Bridge It. The cycle trail is continuing west of Vinegar Hill Rd as part of the Totara Parklands development. Further west again we are adding a further 630m of trail to Bush Haven Drive. This is designed and ready to commence in February, again using redeployed labour.

Elsewhere, our tracks are very loose due to the dry weather and this leads to erosion and the surface can become slippery. The Parihaka Trail run again used our network with 500 participants setting off from Whangarei Falls.

Tree Maintenance

Treescape had one and a half crews running on the WDC Tree Contract this month. January's focus was Parks and Reserves Proactive Cyclical Maintenance.

Work was completed within three other reserves around the district, as well as one Street under the Cyclical Maintenance Programme.

Two large dangerous eucalyptus trees at Whareora Rd end of Hatea River walkway were removed, as well as the crowning of a third eucalyptus, with the main trunk to be removed in February. Pest plants and dead trees were also removed within this area. This site will be completed during February.

CRM's have been received from Ritchies Bus Company complaining about low trees hitting the buses. This will add to the workload in February as these issues are dealt with.

The focus for February will be to continue in Parks and Reserves Proactive Maintenance while conditions in the park are favorable.

11 Wilding Pines were removed along the Hatea River bank at Tikipunga Sports Park as part of a Northland Regional Council funded programme.

There were no Health & Safety issues for the month of January.

Coastal Structures

41 inspections were completed in January, predominantly in the north area. No new major issues were identified.

Only one CRM was received in January relating to the public using a boat ramp wave protection wingwall as a path.

For safety reasons a suite of Parks bridges are inspected annually by engineers at WSP/OPUS, this is completed through the Roadway 'General Bridge Repair' (superstructure) & 'Scour Protection Works' (substructure) contracts. The report found work required on an abutment of the Mair Park/Hatea bridge.

Park Structures

4.8.82 Schedule Item 4.82: First Avenue Footbridge No. F31 (Provisional)

Remove from site to dump all fallen trees from waterway within 10 m in either direction of the bridge.

4.8.83 Schedule Item 4.83: Mair Park Footbridge F34 (Provisional)

Remove from site to dump all logs and debris from both piers.

Note that an Engineer's inspection is required prior to any works at the piers. Hold Point

Repair undermining of both piers:

1. At the western pier, the rock base has been eroded. The Engineer is to meet the Contractor on site prior to any works commencing to discuss the works. This meeting is to coincide with the river being at its lowest level, at the height of the dry season. Price to remove any loose rocks, and then install 6 m³ concreted small rocks and shape equidistant to opposite end of footing.
2. At the eastern pier, the pier has been undermined. The Engineer is to meet the Contractor on site prior to any works commencing to discuss the works. This meeting is to coincide with the river being at its lowest level, at the height of the dry season. Price to place existing rocks in an interlocking manner and pack an additional 2 m³ concreted small rocks within the gaps.



Figure 22: Mair Park F34 Pier Repair

4.8.84 Schedule Item 4.84: Maunu Road / First Avenue Footbridge No. F27 (Provisional)

Repair scour at all four corners of the culvert. Hand-cut benches, place geotextile and take photographs. Then place 1 m³ small size concreted rocks.

Sports Parks

Dry weather means that many of the fields have browned off. Renovations were completed before Christmas and cricket wickets are in good condition and fully booked for summer. Softball is again popular. Touch rugby is also commencing again together with Twilight and 7's with field marking being undertaken for these.

Verti-drainage and under-sowing of winter grasses will commence in February on the sand fields.

Replacement of the lights within Kensington Stadium was programmed this year. Using LED will give far superior lighting and ongoing cost will be reduced with lower power use. Some roof repairs are also being undertaken.

Trade Waste costs have increased at the Aquatic Centre. Trade waste costs are based on water consumption meaning there may be a water leak somewhere in the complex. This is being investigated.

Field lighting testing at Hora Hora and Tikipunga is complete. It has proved tricky to get the lights to phase down either upon turning them off or at the 10pm threshold. Being thrust into complete darkness suddenly is not desirable and the phasing gives an opportunity to clear the fields safely.

With work on State Highway 1 at Otaika not being likely soon, the old 'Blue Goose' site has been tidied up and now maintained within the Sports Park maintenance contract. It suddenly looks tidy and these areas are being used by the public.

It is proposed that the Dog Agility club be offered the use of this area and an agreement is being drawn up to that end. The WDC owned changing rooms have also received a lick of paint and repairs made to joinery that has decayed and broken in places.

Parks and Gardens

January received 75mm of rainfall with a majority falling at the start of the month and by the end of the month Whangarei was starting to look pretty dry and needing a good rain.

Summer annuals are continuing to put on a bright and colourful display at Laurie Hall and around town. Unfortunately, the Town Basin Sun Dial gardens have been hit hard with what is believed to be Scale. This resulted in the removal of a number of affected plants. The contractor is currently looking at testing the soil to confirm that it is Scale and working on a management plan so that the next lot of annuals don't suffer the same fate. The hanging baskets are looking great in our town centres and they are being watered three times weekly.

With the continuing dry conditions, watering annuals beds without irrigation, recently planted infill plants and young trees around the city is being undertaken.

Planning for Autumn annuals and winter infill planting has commenced. Recreational Services will look to get some tentative plans through to the Council for consideration by the end of February.

The mowing in our parks is looking very tidy. With not a lot of growth due to the dry conditions and hot temperatures the contractor is able focus on tidying up around edges of the parks. This time of year is hard on the contractor's workers with sweltering heat to contend with.

There are still a lot of people enjoying the beaches and reserves. The mowing teams continue to have to pick and choose where to go first thing in the morning to complete some coastal jobs. Freedom campers are still around but not experiencing the same problems with their presence compared to previous years.

Playgrounds and Skate Parks

During January, all playgrounds were inspected to ensure COVID-19 QR codes were still on display, the contractor had to resolve a trip hazard at Puriri Park, some graffiti at Kensington Park and broken glass at Ngunguru playground.

We are also dealing with an issue at Hedley Place playground where a neighbour is driving over the reserve (close to the playground) to access the back of their property. This is a daily issue. The property belongs to Kainga Ora and we have been trying to contact the tenancy manager to discuss the issue. This playground is programmed for replacement and as part of this bollards will be installed along the frontage to make this a safe area. We also plan to install a second basketball hoop here in response to a local request.

The Town Basin playground opened on the 29th January and a mass of children took the opportunity to try out the new play equipment. From general comment and observation, it has been a great success.

On social media there were several comments about the removal of the Town Basin liberty swing, a play feature used by those in a wheel chair and only available by requesting a key. The old liberty swing has been given to a local school.

At the Town Basin we have worked with the play designer to provide a more inclusive play experience which provides opportunities for children of all abilities.

Play elements that encompass the inclusivity ethos are:

- basket swing
- 2 spinners, one of which can be accessed by wheelchairs
- Percussion instruments
- Musical Instruments on the fence (Still to be installed)
- Talking tubes
- Embankment slides
- One storey deck level play tower with musical bells on the deck
- Numat surfacing itself which has made the playground very accessible, trafficable and the colours used assist with visual impairment.

Cemetery

An average month in January with 8 burials and 12 cremains interments.

The 2 olive and the cherry tree which were moved from the new Civic Centre site (old RSA building Rust Ave), have required extensive watering over this dry period to give them a chance of survival. We are monitoring them closely and will continue the watering programme as required. The old plaques which were removed from the site at the time are still to be installed.

The new stillborn burial garden has been installed by the team, and the day after completion the first burial took place. See photo. The burials take place in the garden itself, and a plaque is installed on the garden edge. This option is more cost effective than using a baby or child plot.



The workload is manageable with the grass not really growing and with staff away on leave and short weeks, so the cemeteries did not suffer in appearance.

Botanica

Visitor numbers for **January: 1695**. Up from last month with a lot of family groups, both local and from elsewhere.

Where are you from	Comments
Morrinsville	We used to come when I was young. Awesome thank you
Auckland	Saw on Google maps. Everything is so vibrant.
Orewa	Saw in a pamphlet. Lovely garden
Local	Grew up here. Things have grown a lot since last visit. Walked past and spotted the sign. Beautiful.

After getting a structural assessment done last year, a review of this was done and some structural work is required to make the building safe. A steel beam and pole are rusted and need repairing before they fail completely. This will be carried out this coming month.

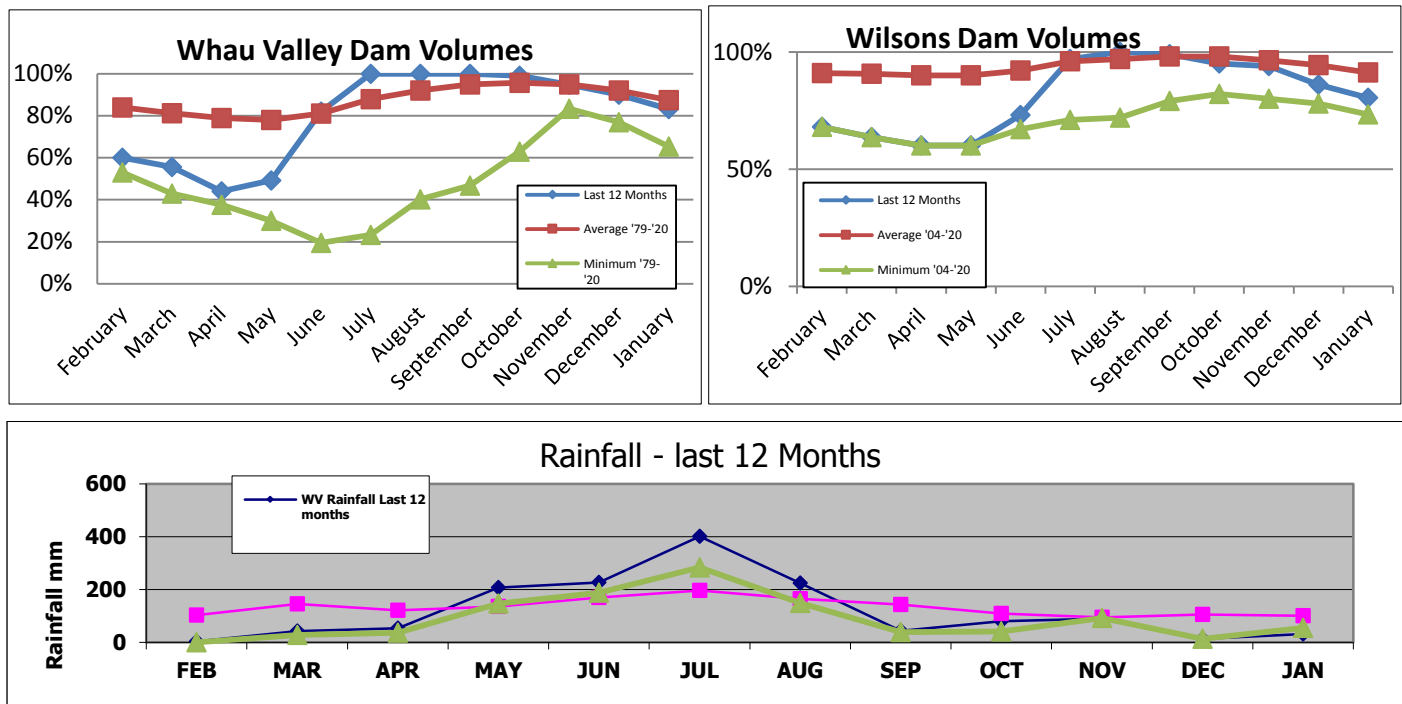
Volunteering Northland has approached WDC to see if we could offer some volunteer roles at Botanica. Volunteers are interested in sites that are located close to the city and near public transport. We are working through this opportunity and developing a job description that includes "meet and greet", maintaining the foyer, advertising material and the outside watering. We plan to trial this for two half days a week.

Water Services

Operations

Rainfall and Water Sources

A dry Spring has been followed by a dry Summer to date. The 5 months since Winter have been the driest on record. 257mm of rain has fallen since the beginning of September compared to 402mm for the same period last year and a long term average of 550mm. In January only 31mm of rain fell at Whau Valley although 55mm fell at Wilsons Dam. The Whau Valley Dam is now at 83% which is below average for the time of year but above the same time last year (76%). Wilsons Dam is also beginning to drop and sits at 80% which is also below average but above last year's level of 74%. Whilst sources are still holding up well, the long range forecast is for normal or below normal rainfall over the next 3 months so we will need to manage sources carefully until we get significant rain.



Production Report

Compliance

Whau Valley WTP – Plant was fully compliant for protozoa and bacteriological.

Ruakaka WTP – Plant was fully compliant for protozoa and bacteriological.

Ahuroa WTP – Plant was fully compliant for protozoa and bacteriological.

Ruddells WTP – Plant was fully compliant for protozoa and bacteriological.

Poroti WTP – Plant was fully compliant for protozoa and bacteriological.

Maungakarama WTP – Plant was fully compliant for protozoa and bacteriological.

Mangapai WTP – Plant was fully compliant for protozoa and bacteriological.

However, a power cut at Ahuroa Water Treatment plant meant that 25 minutes of data was lost. Staff are preparing a report on the incident for the drinking water assessors who will decide whether or not it is considered a non-compliance.

Other works

The algal bloom at Wilsons Dam continues although levels are reducing but not as fast as we would like. The trial of diatom dosing continues with the additional dosing equipment now operating in some of the shallower side arms of the reservoir. Results from sampling show that there are still enough nutrients in the water to allow the algae to grow in spite of our attempts to reduce this. The hope is that with the aeration and diatomix combined we will continue to see a reduction in algal growth particularly as the water begins to cool.

The upgrade of the SCADA system is progressing well, and the third treatment plant has now been upgraded. The new system operates on the cellular network and should be significantly more reliable than the old radio telemetry.

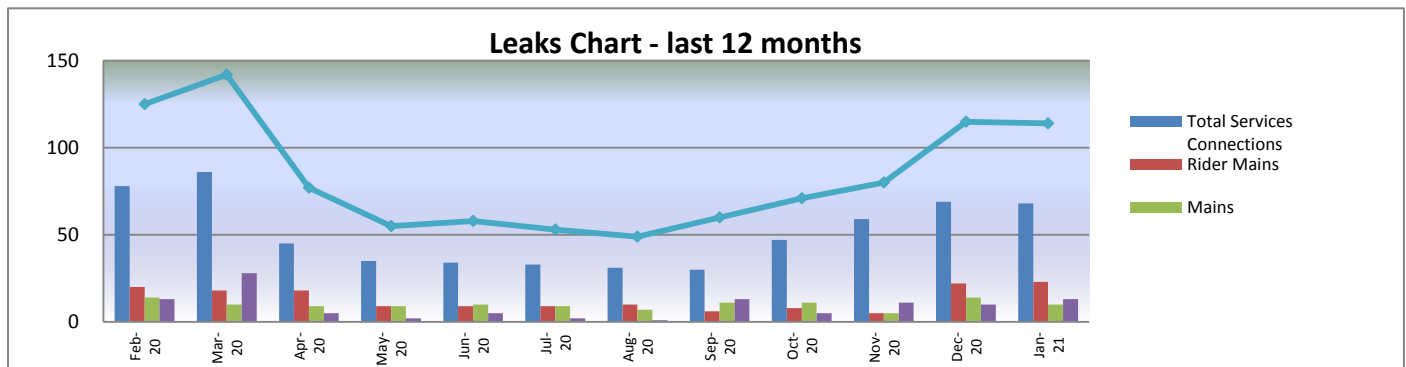
Distribution Report

Water Statistics

81	Connection leaks repaired
33	Rider/Main leaks repaired
39	New connections installed
23	Faulty meters replaced

A total of 81 service connection leaks were repaired together with 33 main and rider main leaks. The number of leaks remains high due to the dry weather making it easier to spot leaks and the fact the leak detection programme has commenced. It is anticipated the number of leaks will remain high if the dry weather continues and the ground begins to dry out and move. A total of 39 new water connections were installed during the month and 23 meters were replaced after being reported faulty by the meter readers.

The following chart shows the number of leaks per category of pipe fixed under the maintenance contract during the last year.



Capital Works

Reticulation Programmed Works

The Hatea raw water main is complete and is now being used with more water being taken than the old pipe would allow. This proved extremely useful during the early part of summer when dam levels started to drop quickly. Work on the Whareora Road distribution water main continues and is expected to be complete by the end of March. This work was an extension of the Hatea main contract but is being funded through the 3 Waters Reform programme. Other work that has come to the top of the priority list are mains replacements in Armstrong Ave and Barclay Place. These are being designed and priced by the maintenance contract so that they can be completed urgently.

3 Waters Reform Funding Projects

The Capital projects that will be funded by the Governments 3 Water fund are, Whau Valley Water Treatment Plant stage 2, Poroti Water Treatment Plant Upgrade – Design, Whareora Road watermain replacement, Rewa Rewa Road water main replacement, Kamo Road water main replacement and the installation of filling points. Work on Rewa Rewa Road is expected to be completed by the end of March. The Kamo main is currently being tendered. The design work for the additional Whau Valley WTP is complete and the contractor has priced this. The concept design for the Poroti upgrade has been completed and staff are in discussions with the Maungatapere Water Company and the Whatatiri Maori Reserve Trust about the project and outcomes. Work has also started on the design of the electronic control system for the new filling points.

Other projects

Work is underway to identify and secure land in Three Mile Bush for a new storage reservoir. A possible site has been identified and geotechnical investigations show that the site is suitable. A valuation is being requested and it is hoped to be able to purchase the land as soon as possible so the construction can begin next financial year.

Consents and Compliance - Laboratory Water Quality Tests

Description	Number of Tests	Failures	Results	Goal	Retest
E. Coli leaving WTP	8	0	100%	100%	N/A
E. Coli within distribution	29	0	100%	100%	N/A
Free Available Chlorine within distribution (above 0.2mg/l)	52	0	100%	95%	N/A

Customer Request Management Services (CRMs)

The Infrastructure Departments received a total of **1943** CRMs in the month of **January 2021**. A total of 13309 CRMs have been received to date for 2020-2021 financial year.

RESOLUTION TO EXCLUDE THE PUBLIC

That the public be excluded from the following parts of proceedings of this meeting.

The general subject of each matter to be considered while the public is excluded, the reason for passing this resolution in relation to each matter, and the specific grounds under Section 48(1) of the Local Government Official Information and Meetings Act 1987 for the passing of this resolution are as follows:

1.	The making available of information would be likely to unreasonably prejudice the commercial position of persons who are the subject of the information. {Section 7(2)(c)}
2.	To enable the council (the committee) to carry on without prejudice or disadvantage commercial negotiations. {(Section 7(2)(i))}.
3.	To protect the privacy of natural persons. {Section 7(2)(a)}.
4.	Publicity prior to successful prosecution of the individuals named would be contrary to the laws of natural justice and may constitute contempt of court. {Section 48(1)(b)}.
5.	To protect information which is the subject to an obligation of confidence, the publication of such information would be likely to prejudice the supply of information from the same source and it is in the public interest that such information should continue to be supplied. {Section 7(2)(c)(i)}.
6.	In order to maintain legal professional privilege. {Section 2(g)}.
7.	To enable the council to carry on without prejudice or disadvantage, negotiations {Section 7(2)(i)}.

Resolution to allow members of the public to remain

If the council/committee wishes members of the public to remain during discussion of confidential items the following additional recommendation will need to be passed:

Move/Second

"That _____ be permitted to remain at this meeting, after the public has been excluded, because of his/her/their knowledge of Item _____.

This knowledge, which will be of assistance in relation to the matter to be discussed, is relevant to that matter because _____.

Note:

Every resolution to exclude the public shall be put at a time when the meeting is open to the public.