



# WATERFRONT PRECINCT PLAN

## **Council Briefing**

Tuesday 25<sup>th</sup> August 2020



# Overview

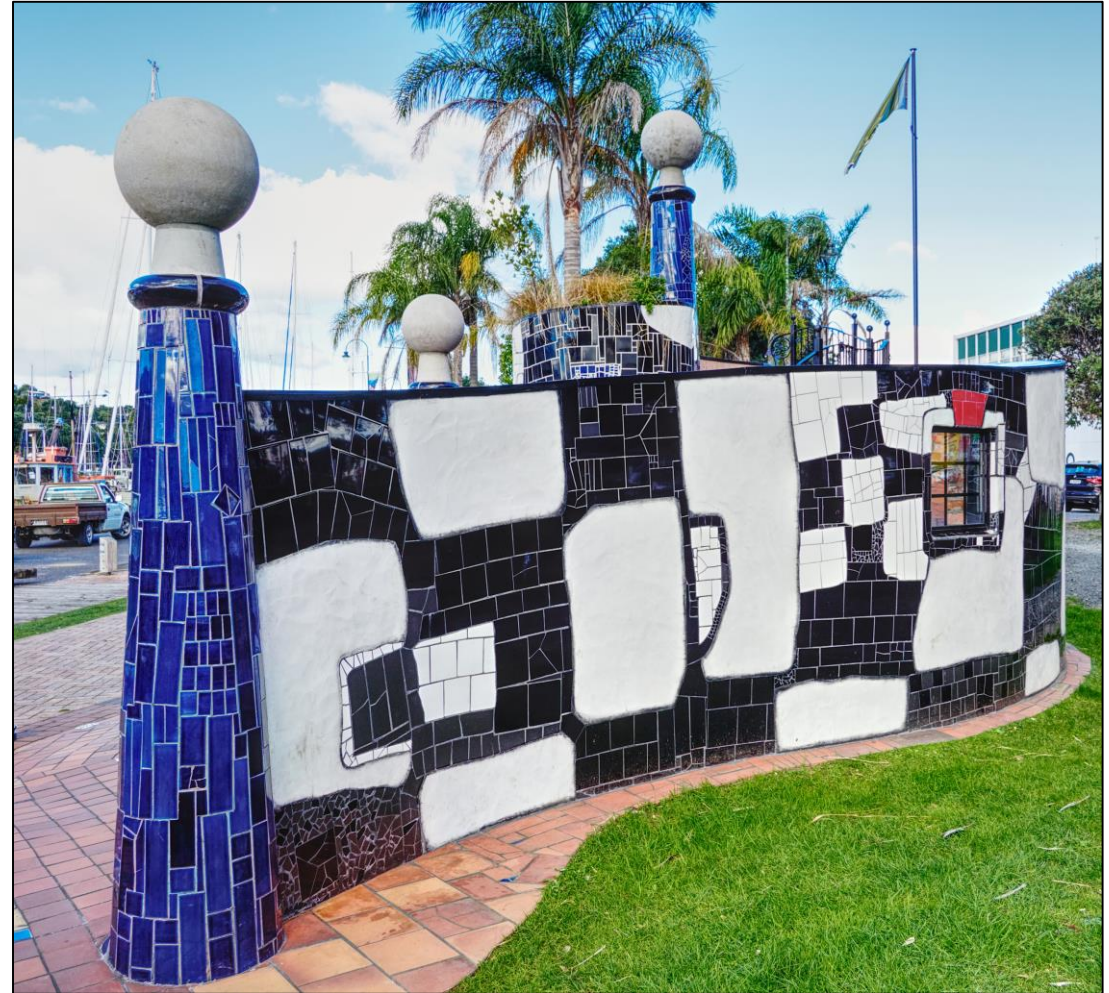
- What is a Precinct Plan?
- Rationale
- Plan scope
- Timeframes
- Public Engagement
- Discussion



# What is a Precinct Plan

Precinct Plans outline a 20-30 year vision and set the direction for an area. The plans are:

- Collaborative
- Design led
- A tool to integrate land-use and infrastructure planning
- Outcomes driven





# Why do we need the Waterfront Precinct Plan?



- Action from Whangarei City Centre Plan
- Vision for our Waterfront
- Co-ordinate planning and infrastructure investment
- Identify opportunities
- Vehicle to work in partnership with Mana Whenua, key stakeholders, the private sector and the community

# Building on our previous work

(1996) 20/20 Traffic Management & Central Area Study

(2006 )20/20: + living the vision (20/20 Plus)

(2015) Hihiaua Precinct Plan

(2013) William Fraser Memorial Park on Pohe Island Reserve Management Plan

(2016) Whangarei 20/20 Momentum

(2017) Whangarei City Centre Plan

(2019) William Fraser Memorial Park on Pohe Island Masterplan

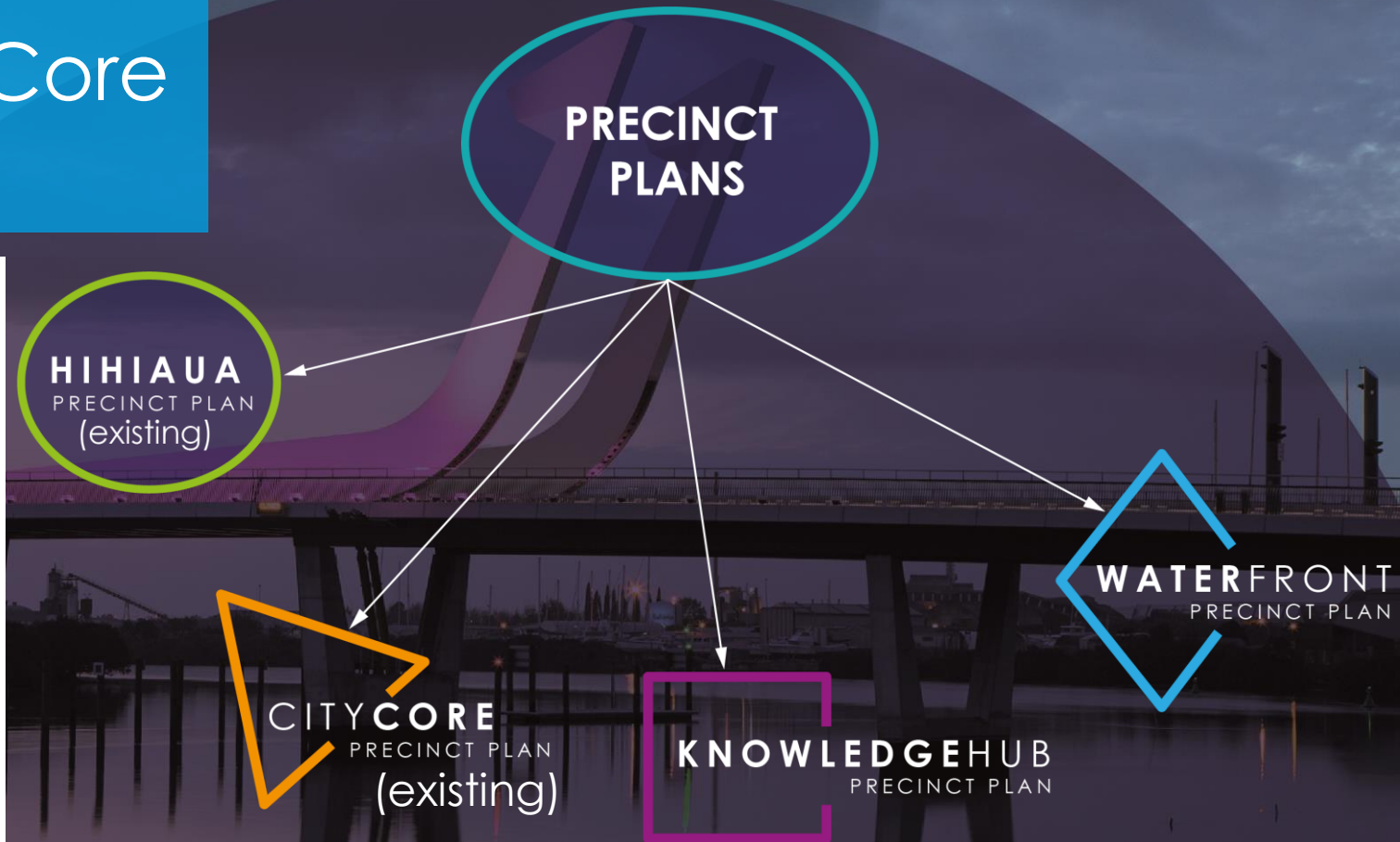
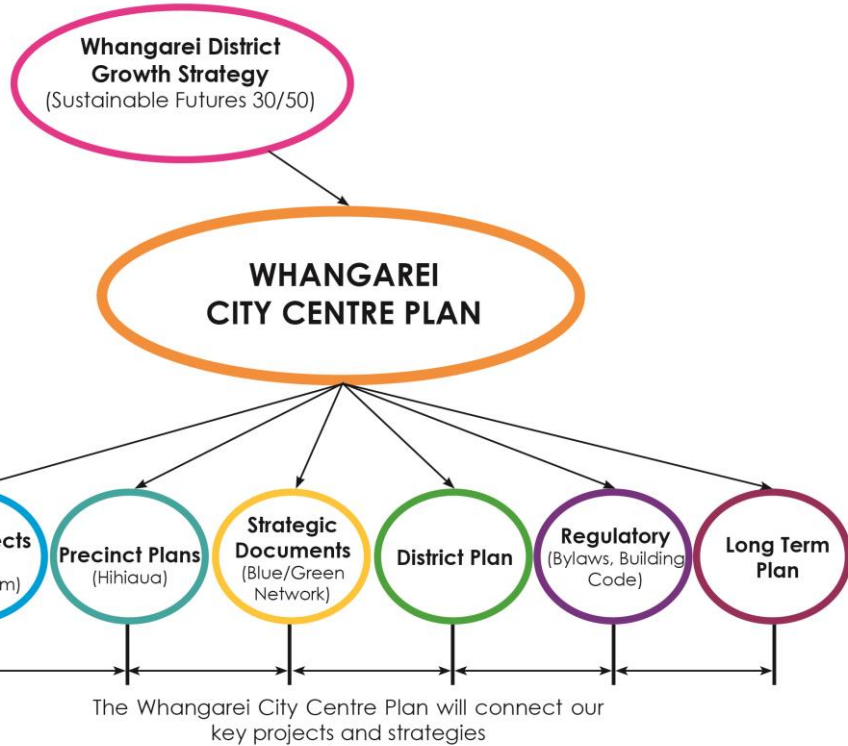
(2019) City Core Precinct Plan

(2020) Whangarei Urban and Services Plan Change

## **Other Strategies, Plans and Bylaws**

- (2003) Urban Growth Strategy
- (2010) Whangarei Growth Strategy Sustainable Futures 30/50
- (2016) Blue Green Network Strategy
- Long Term Plan 2018-2028
- (2018) Walking & Cycling Strategy
- (2017) Freedom Camping Bylaw
- (2014) Public Spaces Bylaw

# Where does the City Core Precinct Plan fit?





# WATERFRONT | Scope





# What the Plan will do

- Provide a strategic and design-led framework.
- Assess key qualities, constraints, and opportunities.
- Align planning and infrastructure investment.
- Balance infrastructure, amenity and environmental outcomes .
- Guide future investment/development.
- Identify and prioritize projects based on Mana Whenua/community values.
- Provide a vehicle for Mana Whenua and the community's input.
- Acknowledge and incorporate projects.
- Recognize the waterfronts history and cultural significance.





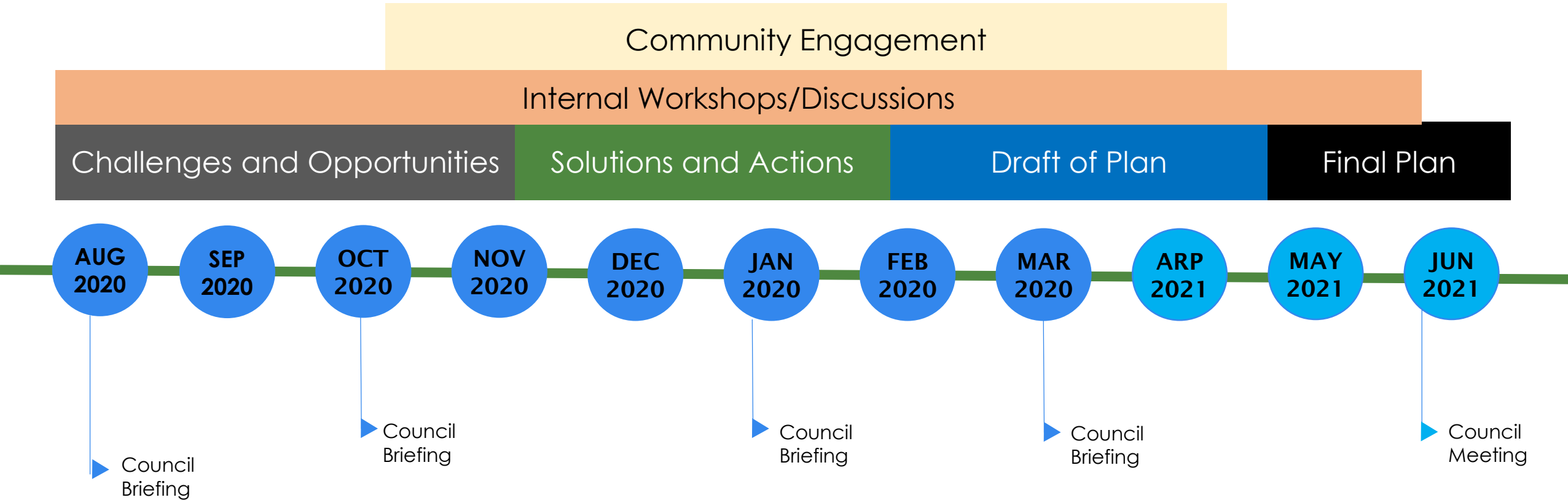
# What the Plan will not do



- Be a statutory plan which can be enforced.
- Address detailed operational matters or the management of specific assets.
- Look at detailed design of projects, but rather trigger projects and provide a brief.
- Be fully implemented or achieved in the short term.



# WATERFRONT | Timeframes





# Consultation approach

- Elected members updates/workshops
- Internal working/steering group
  - option- reference group
- Targeted engagement
  - hapū partners
  - key stakeholders
- 2 rounds of community public engagement
  - option to re-establish 'the Jewel of the City report'





# Next Steps

## **Key direction needed on:**

Comfort to start the Waterfront Precinct Plan

## **Discussion**

- Vision for Waterfront
- What are the challenges/issues and opportunities faced in the Waterfront Precinct?
- Are there any key areas of focus/priorities?