

The background of the slide is a stylized, dark blue map of the Whangarei District. The map shows a network of roads, rivers, and coastal features. The map is divided into several large, overlapping triangular and quadrilateral sections in different shades of blue, creating a layered effect. The text is overlaid on this map.

Draft Whangarei District Growth Strategy Update

Council Briefing 5 February 2020



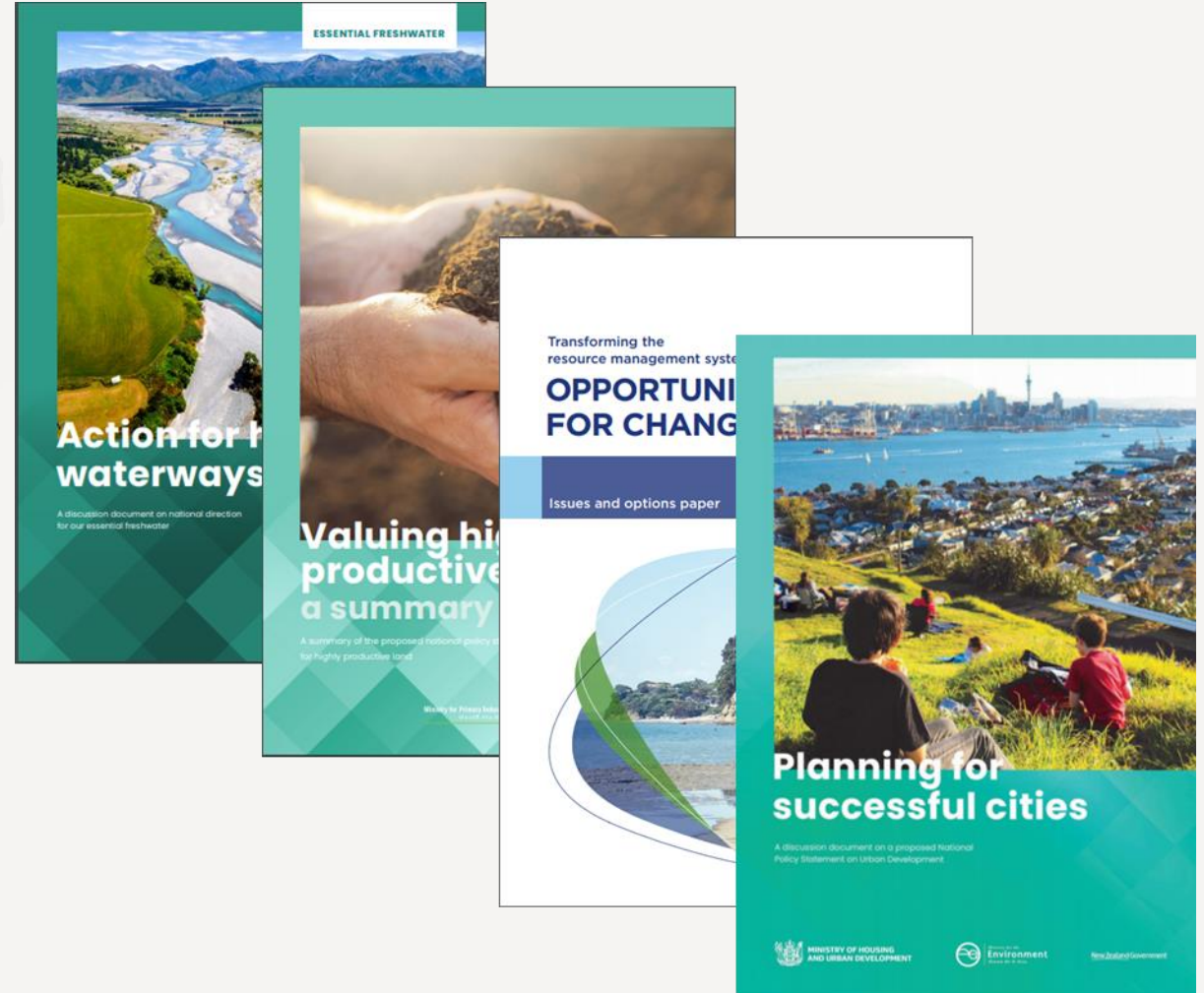
Overview

1. Recap from 4 December and 11 December Briefings
2. Direction sought on a way forward with spatial plans
3. Next steps in the process

Recap from 4 December Briefing

At the 4 December briefing we covered the following topics:

- Outline and purpose of the growth strategy
- Overview of the process and public engagement
- Overview of central government reforms
- Summary of proposed changes to the draft strategy
- Spatial planning programme



Recap from 11 December Briefing

At the 11 December briefing we covered the following topics:

Report back on issues raised at the 4 December Briefing:

- Approach to affordable housing with support for this to become a separate programme of work do to its complexity and scale
- Urban stormwater with recognition that this is an ongoing work programme link to the Freshwater reforms and climate change
- Highly productive soils acknowledging our proposed approach is to continue the direction set in Sustainable Futures 30 / 50 (our current growth strategy)

Recap from 11 December Briefing

At the 11 December briefing we covered the following topics:

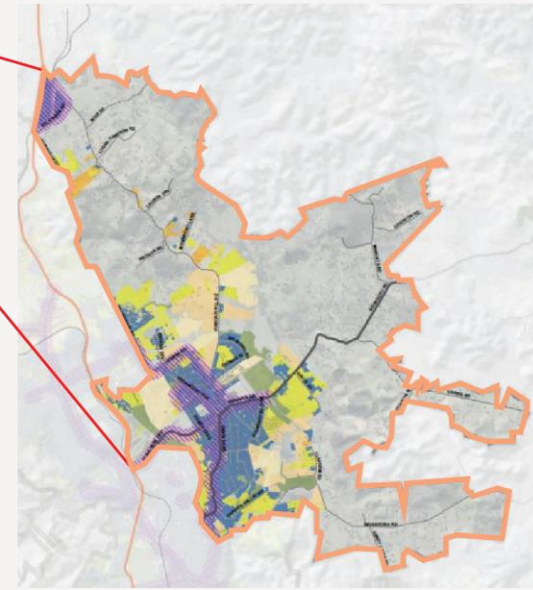
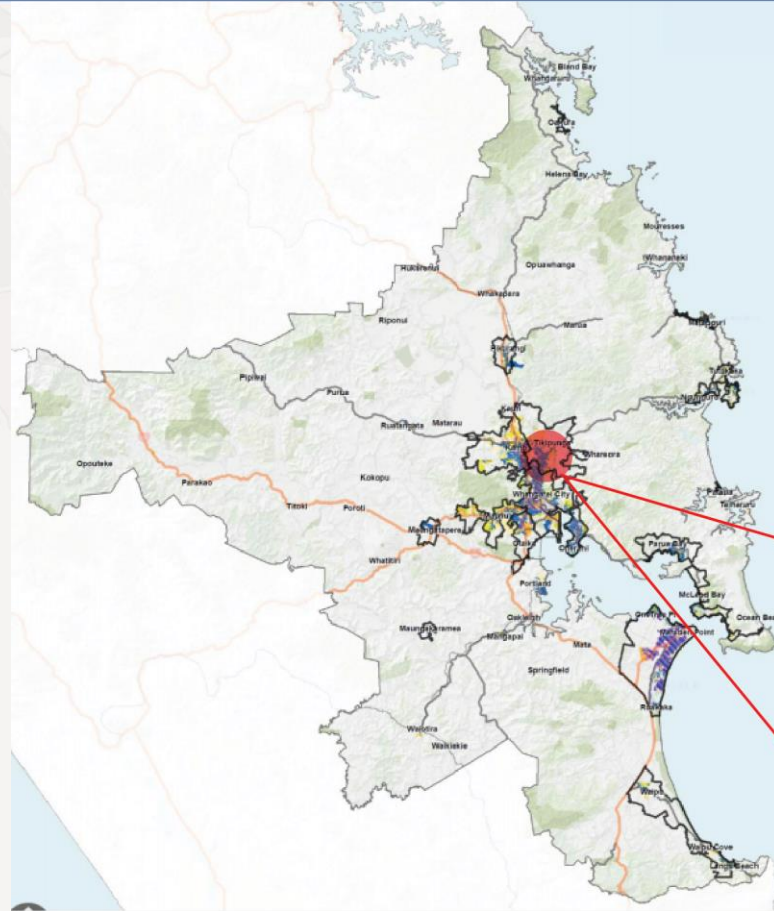
Proposed Spatial Planning programme:

- Recap of what it is and why we need spatial plans
- High level process of creating a plan
- Two options for how to proceed
 1. Officer recommended list of priority locations
 2. Pilot programme in Hikurangi and Parua Bay first, then begin on the recommended list of priority locations

Overview of the Spatial Planning Programme

Why do we need Spatial Plans

- Currently we have a gap between our high-level District Wide strategy and our regulatory tools (District Plan) and infrastructure implementation
- Limited ability for the community and stakeholder to shape the long term future of their neighbourhood
- Identify future development and infrastructure opportunities
- Collaborative tool for Council, Community and stakeholders
- Spatial Plans may be mandated by RMA reforms
- This type of plan was identified in Sustainable Futures 30 / 50 but were not fully implemented



Delivery of spatial plans

Prioritisation

To guide the delivery of the spatial planning programme and to give community and stakeholders certainty we need a prioritised list of locations.

Two options were proposed at the 11 December Briefing for Elected Members to consider.

Option 1: Prioritised list based on criteria in the public consultation Draft Strategy

- Criteria was included in the Draft Strategy which we consulted on
- Criteria are a mix of future/opportunity focused as well as existing issues and constraints
- Population growth is not the main driver – infrastructure, design and amenity as well as community readiness are considered.
- Marsden/Ruakaka will be removed from the programme if the Port of Auckland is relocated to Northport.

Area
Tikipunga
Waipu
Kensington
Marsden/Ruakaka*
Maunu
Parua Bay
Onerahi
Hikurangi
Kamo
Raumanga/Otaika

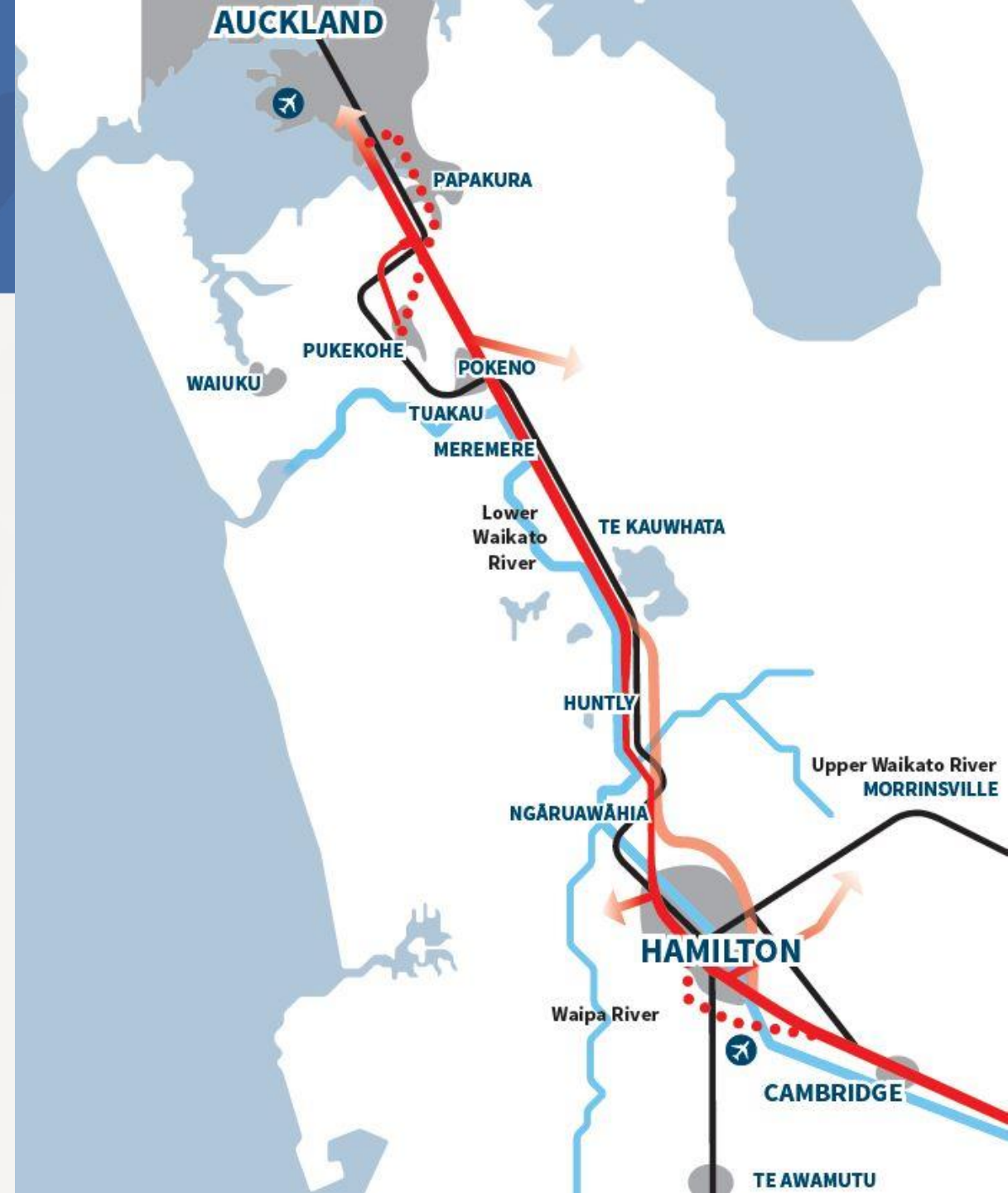
Option 2: Pilot programme.

- Pilot the programme to test/refine methodology
- Once Pilot is complete, the programme will continue as per Option 1.
- Parua Bay and Hikurangi have been selected because both locations:
 - Have willing communities and support for further planning
 - Have experienced a lot of growth and/or have considerable development opportunity
 - Are spatially well defined smaller locations
 - Have known issues to address

Area
Pilot: Hikurangi / Parua Bay
Tikipunga
Waipu
Kensington
Marsden/Ruakaka*
Maunu
Onerahi
Kamo
Raumanga/Otaika

Marsden / Ruakaka

- If the port move is given the green light it is recommended that Marsden/Ruakaka is removed from this programme.
- Instead, we recommend a more detailed and comprehensive plan is undertaken.
- This could be similar to the *Hamilton to Auckland Corridor Plan* – a plan driven by multiple stakeholders to better facilitate growth between the two major centers



Direction sought on whether to proceed with Option 1 or Option 2

Option 1

Area
Tikipunga
Waipu
Kensington
Marsden/Ruakaka*
Maunu
Parua Bay
Onerahi
Hikurangi
Kamo
Raumanga/Otaika

Option 2

Area
Pilot: Hikurangi / Parua Bay
Tikipunga
Waipu
Kensington
Marsden/Ruakaka*
Maunu
Onerahi
Kamo
Raumanga/Otaika

Next Steps

1. Direction will be sought on whether to proceed with Option 1 or Option 2 at the February Strategy, Planning and Development Meeting.
2. Based on the preferred option, work will be on the Spatial Planning Programme. Elected members will receive regular briefings/workshops as the plans progress
3. Council will be presented with a revised draft of the Whangarei District Growth Strategy for consideration as to whether there is comfort to adopt or a need to reconsult.
4. Monitoring report on the housing market, housing development and subdivision will be provided to elected members